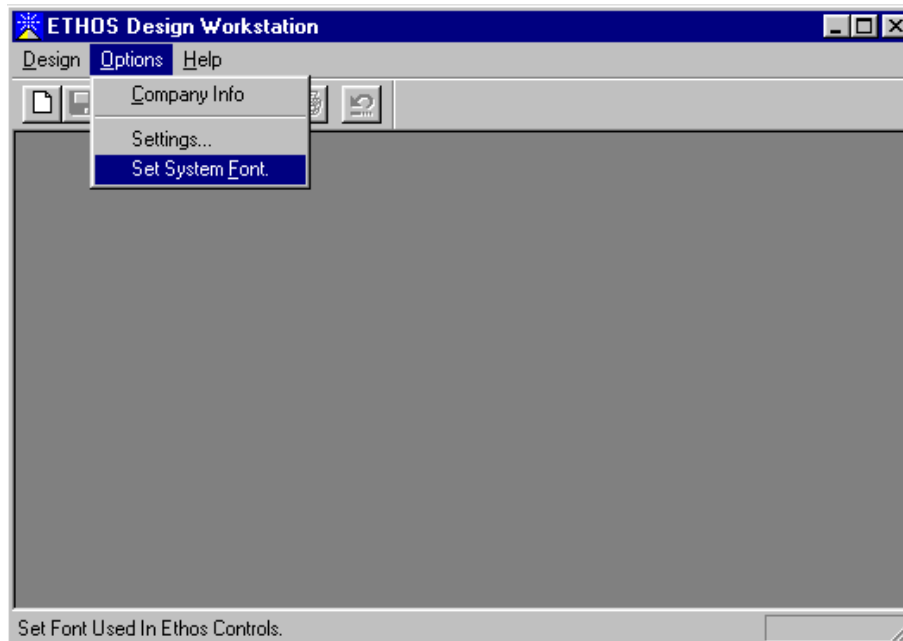


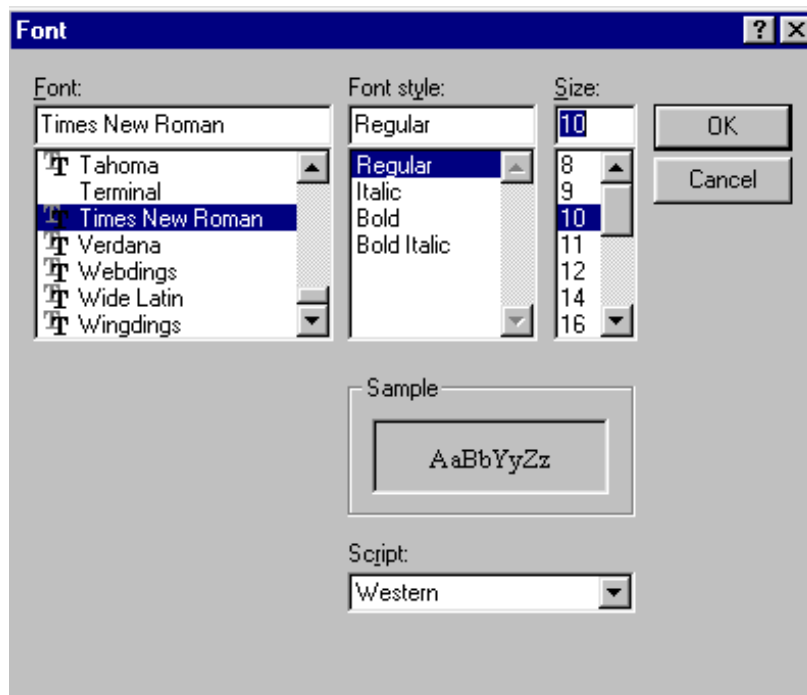
ApS-Ethos Series - Show Me How..... To Set The System Font

The *Ethos System Font* is the font used in *Toolbar* drop down lists such as the font select list or needle select Lists. By changing the font used the user can free up toolbar space by using a small font or make the list clearer to read by using a bold or larger font.

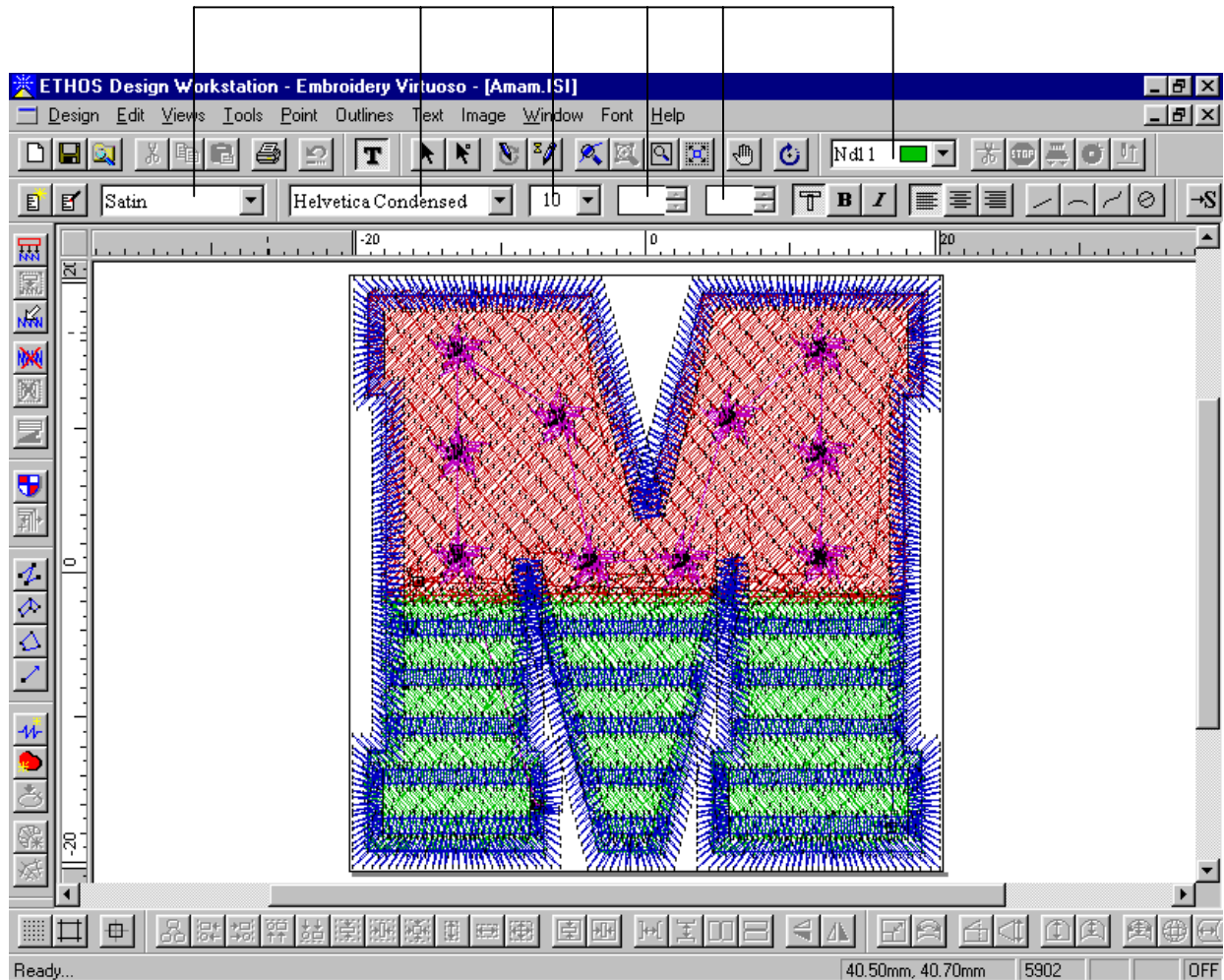
- 1) Close all designs to get access to the system menu.
- 2) Select menu option *Options->Set System Font*.



- 4) The *Font Dialog* Will be displayed as below. Select a font, style and size and click OK.



- 5) Restart Ethos
- 6) Open a design.
- 7) The fonts in the toolbar drop down lists will have changed to match the system font.



----o0o----