

# ApS-Ethos Series - Show Me How To.....

## Use The Stitch Estimator

Ethos now has an option which allows the user to perform a *stitch estimate* on a loaded image before it is converted to embroidery data. This option can be found in the *image menu* of most of the embroidery modules. Generally it is advisable to prepare the image before doing the stitch estimate as follows (from the *image menu*) :-

- 1) Colour Reduce (Down to 16 colours).
- 2) Edit Palette (Merge colours to get an even smaller selection of colours).
- 3) Stitch Estimate.

When the *Stitch Estimator* is selected the cursor will change to the following *inking tool* :-



This *inking tool* allows you to quickly draw around the part of the image which you are interested in, more specifically it allows you to exclude any background which will not form part of the design. Hold down the *left-mouse button* and move your mouse, so producing an ink line around the area of interest. Make sure you continue to hold down the *left mouse button* as you draw. Once you let go of this button the system will automatically close the inking shape and store this as a region - outside of which is to be ignored during the stitch estimation.

Example:-

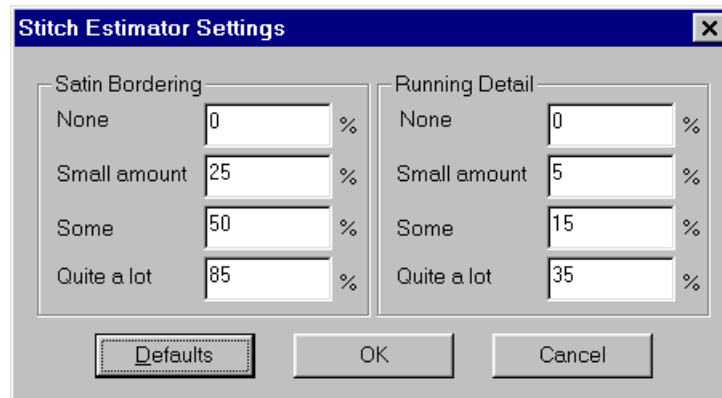


Once the *left mouse button* is released and the region has been stored the system will then displayed the colours of the image from which the stitch count estimates will be displayed.



By selecting colours individually, or more than one using *Ctrl* or *Shift*, you can see the an estimation of the number of stitches needed to cover that area of colour. It is important to remember that **this is an estimate**, and is obviously calculated on the actual size which the image has been placed at. If you have not placed the image at the correct size use *Views/Zoom Resize*, and then *Edit/Rescale*. To improve the accuracy of the *Stitch Estimator* any embellishments which will be added to the embroidery design can be specified. These will revise the stitch count upwards. The embellishments have been split into 2 types, *Satin Bordering* and *Running Detail*, the quantity of each being *None*, *Small Amount*, *Some*, *Quite A Lot*. The stitch count will increase by a percentage dependant on the level of embellishment chosen. Just how far the stitch count is revised depends on extra *settings*, which can be specified by the user. To edit these settings simply select *Settings*. This will display the following dialog:-

In the default example above, if the user chooses to have a *Small Amount* of *Satin Bordering* the stitch count will be increased by 25% and so on. You can specify your own values or reset the defaults by selecting *Defaults*.



**Hints And Tips:-** To increase the accuracy of the estimate you should try and use the *doubling up* technique. In the example above, the stitch estimate for the blue area assumes that holes will be left where the black and white shapes are (no blue stitches will be behind the black and white areas). In practice this may not be the case, the blue area may extend behind the black and white. These hidden stitches can be accounted for by doubling up the stitch counts for the black and white areas. Simply select the black and white areas to obtain their combined stitch count, and note it. Then select the blue to obtain an estimate and then add to it the noted estimate for the black and white - this should give you a more accurate estimate for the blue area.

----o0o----