

# projects from the runway

brother®

project  
**RUNWAY**  
©2017 Brother Corp. LLC. All Rights Reserved. projectrunway.com



## Christopher Palu

### Leather Jacket & Draped Jersey Dress

Hello! My name is Christopher Palu from Season 10 of *Project Runway*. I will be making a Leather Jacket and Jersey Dress as seen in Episode 4 using the Brother™ LB6800PRW Project Runway™ Limited Edition Sewing and Embroidery Machine! I love this machine! I have never had such an amazing, smart, easy to use sewing machine like this and I'm so happy to now have it in my collection. Let's get started!

### Leather Jacket

**MATERIALS:** Black medium size piece of leather (I prefer to use a nice, soft calf), black polyester thread, 20" zipper.

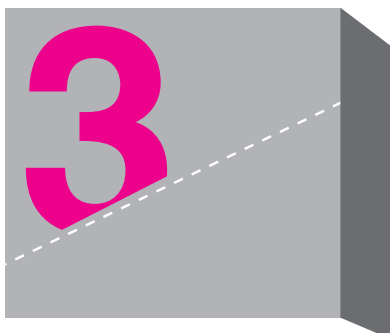
1

I started my jacket with a muslin pattern; I draped the front in 2 pieces and the back in 2 pieces.

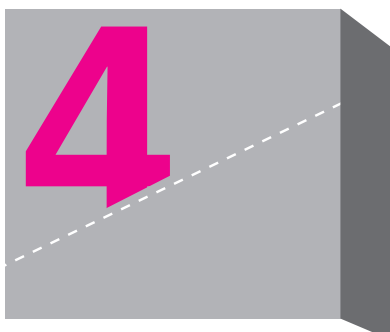




I then draped the sleeve and laid out all the pattern pieces in order to get ready to cut out the leather. When cutting out the pattern in leather, cut out the pieces a little bigger (like an  $\frac{1}{8}$  of an inch) so you are able to sew the pieces together correctly.



Cut out the right side in leather and make sure you flip all of the pieces, in order to cut for the left side.



It's time to sew the cutouts together.

Note: When sewing the pattern pieces together, you should overlap them, not forgetting to back tack! If you don't do so, the seams will all open up.

*Tip: Test sewing 2 pieces of leather together before sewing the pattern pieces, making sure your machine can handle the 2 layers of leather. Make sure the tension and stitch length is good before continuing.*



5

I started sewing the 4 princess lines first. I proceeded to sew the front 2 pieces, and the back 3 pieces, and then all together at the shoulders.

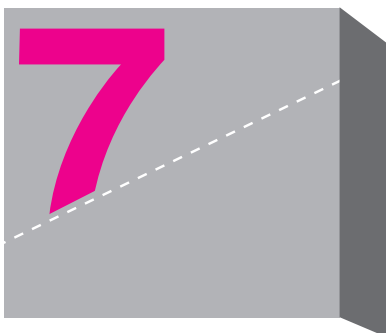


6

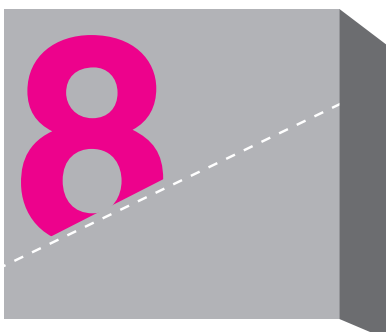
Next, we put the sleeves in. This can get tricky because leather tends to slide. Make sure you are holding it firmly while you sew because if this isn't done correctly, the sleeves won't match up and will twist on you. I started the sleeves by sewing the top of the shoulder seam down to the side seam of the bodice to ensure that it is being evenly sewed on with the bodice over the sleeve (as so). This is to be done to both sleeves.





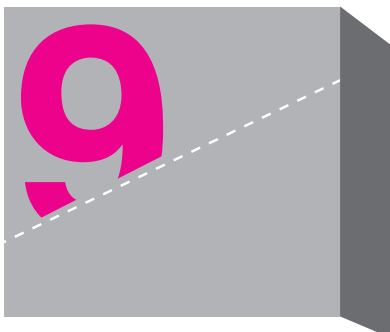


Next, I want to put the zipper in. I started with putting the jacket on the dress form and making sure they are evenly matched up.



I then took the separating zipper's end and sewed it to the bodice, up to the neck. It was too long, so I had to cut the excess off and add a little zipper stopping tab.





Next, let's sew the side seam and underarm seam. I started with sewing the armpit (back over front) down the side and then went back and sewed the armpit down the sleeve, ensuring that all of the seams will match up.

Note: Make sure all of the seams are back tacked and tightly sewn and also that all of the loose threads are clipped on the inside and outside of the jacket. I tend to go over all the loose threads and seams with a lighter; burning them is a good finish.

*Tip: Test this on your scrap piece of leather first if you are unsure.*



(This project was created from the designer's perspective.)

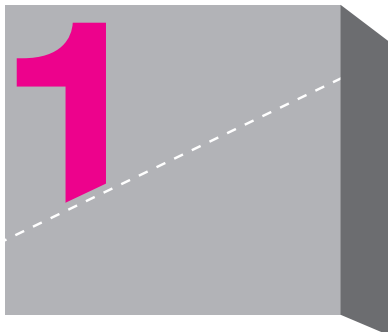
done



## Draped Jersey Dress

I started this garment with a sketch to plan out where and how I wanted the garment to drape.

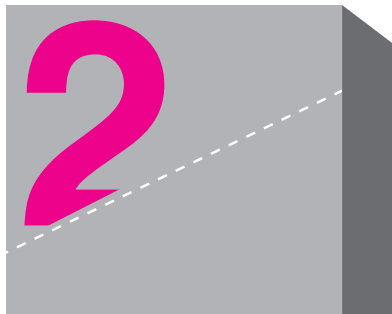
**MATERIALS:** 2 yards of 50 inch width black jersey fabric.



I am using shoulder pads and pinning them securely to the dress form. I cut the 2 yards in half and then a half in half so that I have one big piece for the back and 2 smaller pieces for the front.

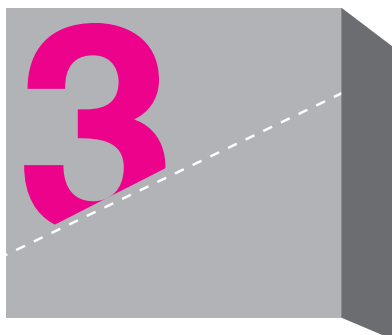
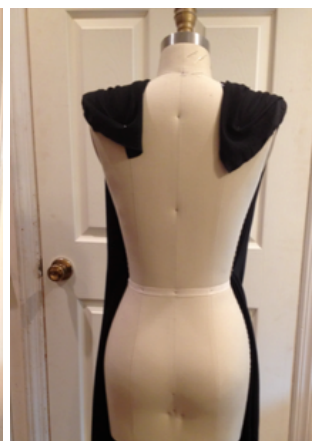
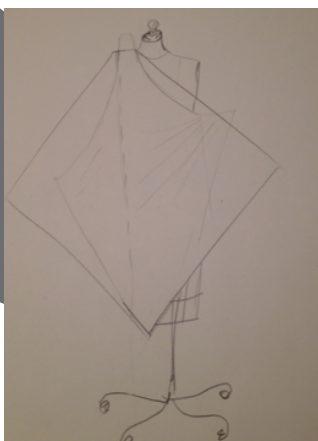






I started draping the front, putting the 2 squares of fabric each on bias on the shoulders. I draped the right side going under the left and hand tacked the corners, making sure they do not move.

*Tip: It's hard to recreate a good drape, so if you find a great one, try to sew it as best as you can.*



Take the back pieces and keep it on straight grain. Since the front is bias, drape it to the back around the neck, and cut the curvature around the neck and pin the shoulders where they match up to the front. Cut around the armhole, but leave at least 2 inches of seam allowance, so you have fabric to tuck under the shoulder pad.

Note: I chose to have a shoulder pad because since it's such a draped garment, it's nice to have a little structure, and making the shoulders bigger with a V-neck is very slimming.





Now take the pieces off and sew the right side to the right side on the shoulders. Do this to both sides and tuck the fabric underneath. To securely attach this, you will have to hand sew as clean as possible.



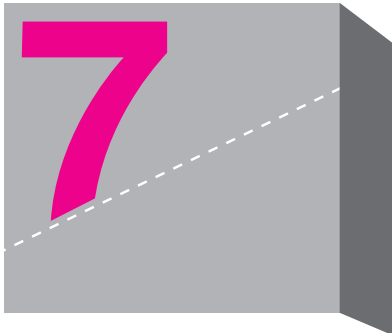
Next, make sure your drape is still intact, because we are going to put the dress on the form inside out to pin the side seams. Take the back and pin it to the front as high up as an armhole you want. If you plan on wearing a bra with this, you probably want it at least 1 inches - 2 inches under the armplate. I chose to stop it low to give it a more exaggerated chic look.





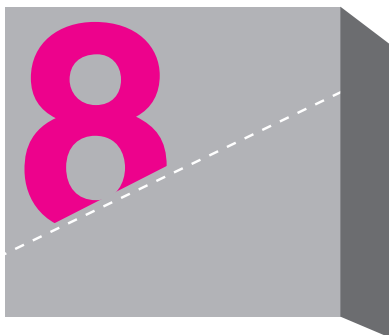


Next, take the garment off the form and sew the side seam. Clip the seam allowance down to ½" and you can run the edge through the machine with a zigzagging stitch to secure it.



Make sure when sewing the side seam you keep the drape intact.

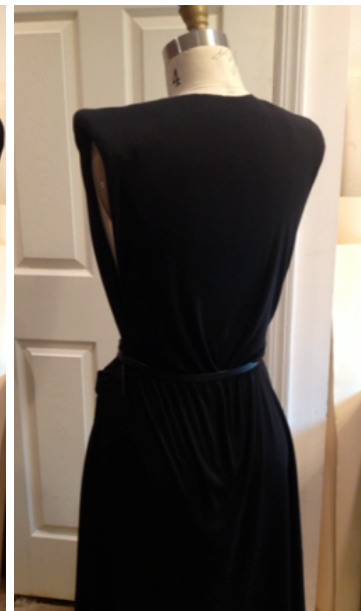
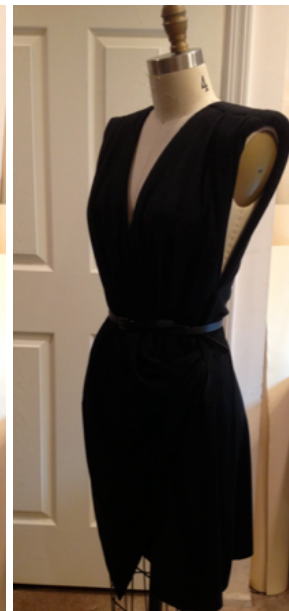




All we have left is the hem. This also depends on what you like, how short/long, symmetrical/ asymmetrical. Have fun with it! I left mine asymmetrical to give it character.

Note: This fabric fortunately doesn't need to have a finished hem because it is a knit and doesn't fray if you cut it in a clean line.

*Tip: When shopping for your jersey, make sure you find something similar because the way it lays is so much more elegant without a bulky hem.*



I like to accessorize a belt with my dress and make it more sophisticated. This is where you can have fun with it! You can accessorize the dress with anything; any color, any print and any metallic to make it your own!

Now, you can put your leather jacket over it and take a look at your new fabulous outfit.

(This project was created from the designer's perspective.)

done