

■ No. **2012-104** ■ Date: 2012/7/30

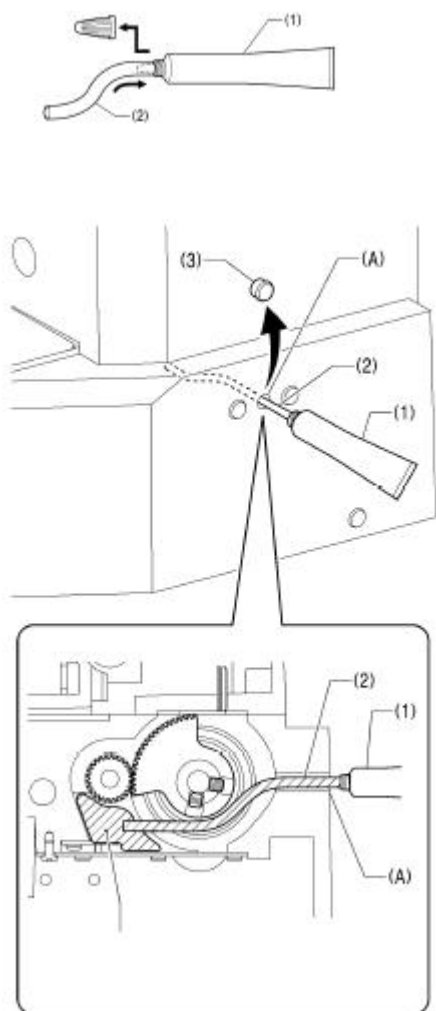
Model : **KE-430F**

Title : **Increasing Grease Amount for Lower shaft Gear Box**

It is required to add amount of grease into lower shaft gear box in order to obtain continuously for stable sewing performance.

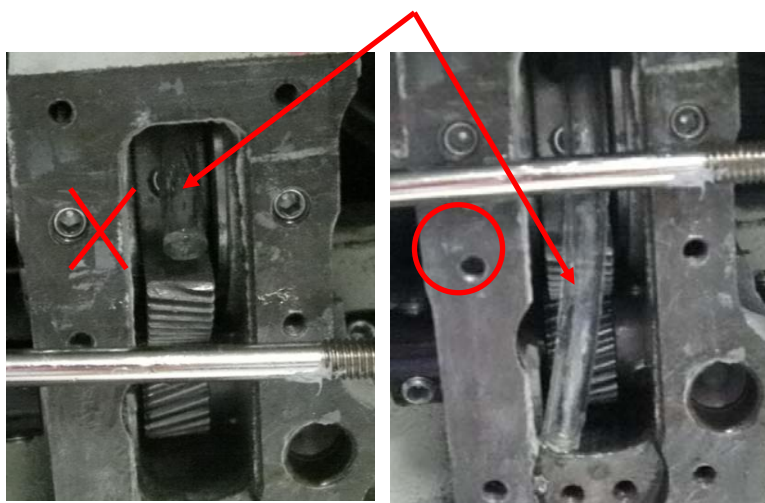
Please prepare Grease Set (SB3063001) contained grease amount 24 cc.

* Before July 2011 production grease amount was 16 cc in the gear box, Add grease 1/3 of amount of Grease set. One Grease set can be used for three machines.



1. Remove cap of grease set (1), insert tube (2) to outlet of grease set (1).
2. Remove cap (3) from casting.
3. Turn the pulley to arrow direction until needle bar become its lowest position.
4. Insert tube (2) to hole of casting (A), position of tip of tube (2) should be all way to bottom of gear box, outlet of grease set (1) will be close to entrance of hole of casting (A).
5. Squeeze grease around 8 cc. (1/3 of total amount)
6. Pull out tube (2) from hole of casting (A), install cap (3).

TUBE



All way to bottom of gear box