

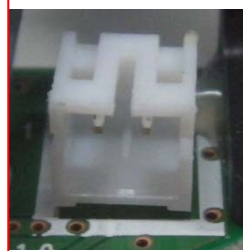
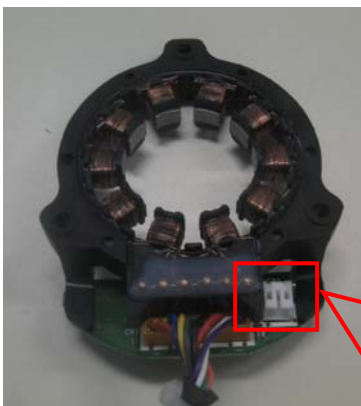
■ No. 2012-106    ■ Date: 2012/11

Model : S6200DD, S-6200A, S-7200C, Twin Needle, KE-430F, BE-438F  
 Title : The differences of the resolver stator assembly

Resolver stator assembly is different depend on models. Different point is length of harness, direction of connector and electronic element (Hall IC).

When replacement will be required by parts failure, please check parts number with below table.

Model	S6200A,S7200C, Twin Needle	KE430F,BE438F	S6200DD
Parts Number	SA9437001	SB0347001	SB2323001
Length of harness	650mm	1260mm	650mm
Direction of connector	Downward	Downward	Upward
Hall IC	W10B	W50B Required more precise needle positioning for needle reverse up at the beginning.	W10B



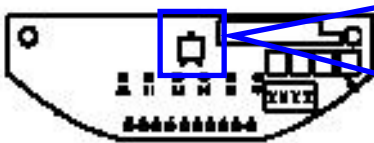
Downward

S6200A  
S7200C  
Twin Needle  
KE430F  
BE438F



Upward

S6200DD



W10B

S6200A  
S6200DD  
S7200C  
Twin Needle

W50B

KE430F  
BE438F