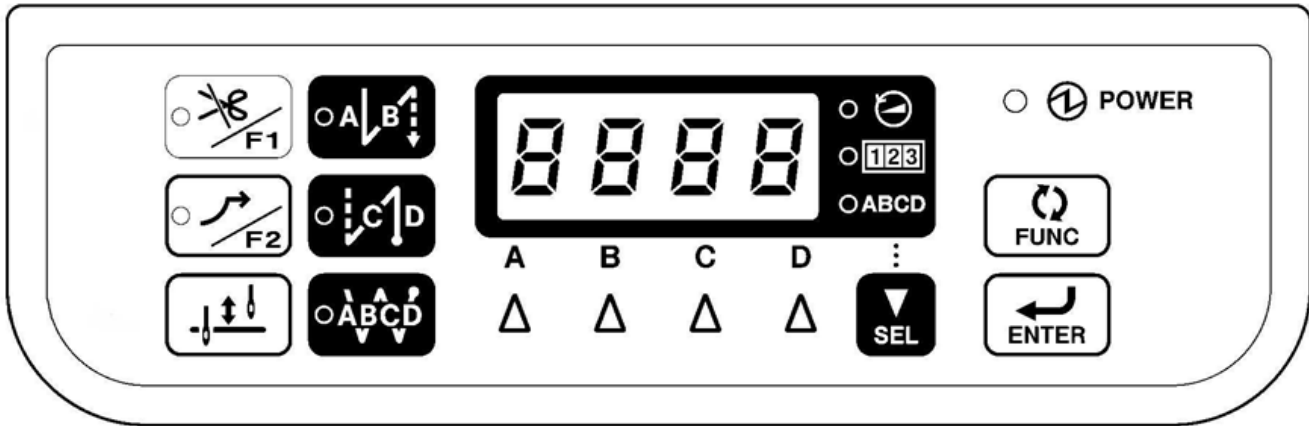


■ No. 2013-114 ■ Date: 2013/7/24

Model : **S700DD**
 Title : **Function Setting**



Switching Display

Display will be changed
 SPEED>COUNTER>ABCD

Setting for Basic Function

+

△C,D: Changing function
 (D:Next, C: Previous)

Needle Stop Position	Updn
Correction Sewing	Corr
Slow Start	SLow
Disable Trimming	trdi
Thread Wiper	Wip
LED Brightness	LAMP

To Confirm

End of Setting

Memory Switch

+ +

△C,D: Change Memo SW NO. (D:Forward, C: Backward)
 (△A,B>Jump to different setting from default value)

Display change No.-->Value

To Confirm

End of Setting

Initialiaization

+

1.ALL	Clear All
2.MEM	Memory Switch
3.SPД	Sewing Speed
4.SEW	Program

Press 2 sec.⇒ [END]

End of Setting

Needle Up Stop Position Adjustment

$\overset{B}{\Delta} + \text{ON}$

Error Log

$\text{D} + \text{ON}$

Input Checking

$\overset{A}{\Delta} + \text{ON}$

Output Checking

$\text{SEL} + \overset{A}{\Delta} + \text{ON}$

Treadle Unit Setting

$\overset{C}{\Delta} + \text{ON}$

FF	Press Fully Pedal	SEL
nn	Neutral Position	SEL
rr	Fully Heel-back Pedal	SEL
Pd	Neutral Position	ENTER

Maintenance Information

$\text{SEL} + \overset{D}{\Delta} + \text{ON}$

Δ C,D: Change Display
[SEL]: Display Contents

PONT	Power On Time (Unit: Hour)
MONT	Motor Run Time (Unit: Hour)
HHST	History of Max. Speed

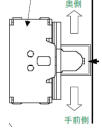
When Press Δ D, display 7 Digits

Software Version Check

$\text{A/B} + \text{ON}$

Software Version Upgrade

Set SW1 of Main PCB to Center position



Version Upgrade PCB

$+ \text{SD Card} + \text{ON}$

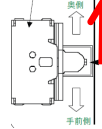
Ignore E-401 wait until [END]
Software name: ISM18MN.BIN

Protect Setting

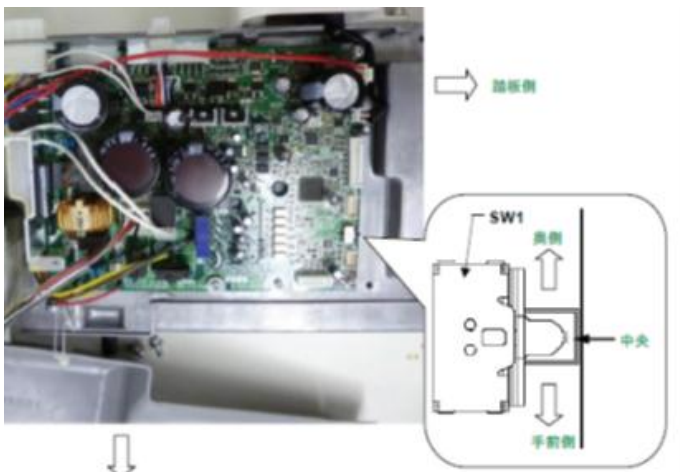
$\text{A/B} + \overset{C}{\Delta} + \text{ON}$

LV1	Able to change all setting
LV2	Enable except initialization
LV3	Individual Setting

Set SW1 to rear, Enable to set "Protect" and "Initialization".



ENTER Confirm FUNC End



Level Setting function	LV 1	LV 2	LV 3 (Individual setting)						
			ALL OFF	1	2	3	4	5	6
				①=ON	②=ON	③=ON	④=ON	⑤=ON	⑥=ON
Sewing Speed (Set by [SELECT] key)	○ (x)	x (x)	○(x)	x (x)	(x)	(x)	(x)	(x)	(x)
Memory Switch Setting	○ (x)	x (x)	○(x)	(x)	x (x)	(x)	(x)	(x)	(x)
Basic Function Setting	○ (○)	x (x)	○ (○)	()	x (x)	()	()	()	()
Thread Trimming Disabled/F1 Setting	○ (○)	x (x)	○ (○)	()	()	()	x (x)	()	()
Slow Start/F2 Setting	○ (○)	x (x)	○ (○)	()	()	()	x (x)	()	()
Start Backtack Setting	○ (○)	x (x)	○ (○)	()	()	()	x (x)	()	()
End Backtack Setting	○ (○)	x (x)	○ (○)	()	()	()	x (x)	()	()
Continous Backtack setting	○ (○)	x (x)	○ (○)	()	()	()	x (x)	()	()
A-D switch Number Setting	○ (○)	x (x)	○ (○)	()	()	()	()	x (x)	()
Stitch No. of Program Sewing Setting	○ (○)	x (x)	○ (○)	()	()	()	()	x (x)	()
Program No. or Step Setting	○ (○)	x (x)	○ (○)	()	()	()	()	x (x)	()
Counter Value Setting T/Trimming Counter Change	○ (○)	x (x)	○ (○)	()	()	()	()	x (x)	()
Initailization	○ (x)	○ (x)	○ (x)	(x)	(x)	(x)	(x)	(x)	x (x)
Protect Setting	○ (x)	○ (x)	○ (x)	(x)	(x)	(x)	(x)	(x)	(x)

※Values inside of () when SW1 is rear (P7) side.

