

Before you begin you must know your wireless network settings.

1. Write down the wireless network settings of your access point or wireless router.

SSID (Service Set ID or Network name)

WEP Key (if needed)

WPA-PSK Password (if needed)

Encryption (TKIP or AES)

LEAP user name (if needed)

LEAP password

The WEP key is for 64-bit encrypted networks or 128-bit encrypted networks and can contain both numbers and letters. If you do not know this information you should see the documentation provided with your access point or wireless router. This key is a 64-bit or 128-bit value that must be entered in an ASCII or HEXADECIMAL format.

For example:

64-bit Uses 5 text characters.

ASCII: e.g. "Hello" (this is case sensitive)

64-bit Uses 10 digits of hexadecimal data.

Hexadecimal: e.g. "71f2234aba"

128-bit Uses 13 text characters.

ASCII: e.g. "Wirelesscomms"
(this is case sensitive)

128-bit Uses 26 digits of hexadecimal data.

Hexadecimal: e.g. "71f2234ab56cd709e5412aa3ba"

- WPA-PSK enables a Protected Access Pre-shared key that allows the Brother wireless machine to associate with access points using TKIP and AES encryption. WPA-PSK uses a Pre-Shared Key that is 8 or more characters in length, up to a maximum of 63 characters.
- Cisco@LEAP has been developed by Cisco Systems, Inc. which uses user ID and password for authentication. The LEAP User ID is up to a maximum of 63 characters in length, and the Password is up to a maximum of 31 characters in length.

2. Plug the AC power cord into an AC outlet. Turn the power switch on.



Improper Setup

If you have previously configured the wireless settings of the machine you must reset the network (LAN) settings before you can configure the wireless settings again. Press Menu, 5, 2, 6 (or Menu, 5, 0, 1) and then press 1 to accept the change.

3. On your machine, press **Menu, 5, 2, 2.**

Press 1 to choose On. The wired network interface will become inactive with this setting.

4. The machine will search for your network and display a list of available SSIDs. You should see the SSID you wrote down earlier. If the machine finds more than one network use the

or to choose your network, then press **OK**. Go to step 8.

Note

It will take several seconds to display a list of available SSIDs.

If your access point is set to not broadcast the SSID you will have to manually add the SSID name. Go to step 5.

5. Select <New SSID> using the or and press **OK**. Go to step 6.

6. Enter a new SSID and press **OK**. For information how to type text, see *Entering text* on page 46 of the Quick Setup Guide.

7. Press the or to choose Infrastructure, then press **OK**.

8. Use the or and **OK** keys to choose one of the options below: If your network is configured for Authentication and Encryption you must match the settings used for your network.

No Authentication or Encryption: Choose Open System, press **OK** then choose None for Encryption Type and press **OK**. Then press **1** to apply your settings. Go to step **12**.

No Authentication with WEP Encryption: Choose Open System, press **OK** then use the

or to choose WEP for the Encryption Type and press **OK**. Go to step **9**.

Authentication with WEP Encryption:

Choose Shared Key, press **OK**. Go to step **9**.

Authentication with WPA-PSK (TKIP or AES Encryption): Choose WPA/WPA2-PSK, press **OK**. Go to step **10**.

Authentication with LEAP: Choose LEAP, press **OK**. Go to step **11**.

9. Choose the appropriate key number and press **OK**.



Enter the WEP key you wrote down in step **1** using the dial pad. You can use the or to move the cursor. For example, to enter the letter a, press the **2** key on the dial pad once. To enter the number 3, press the **3** key on the dial pad seven times.

The letters appear in this order: lower case, upper case and numbers.

Press **OK** when you have entered all the characters, then press **1** to apply your settings. Go to step **12**.

Most access points and routers can store more than one key, but they will only use one at any time for authentication and encryption.

10. Press the or to choose TKIP or AES for Encryption Type and press **OK**. Enter the WPA-PSK Password you wrote down in step **1** using the dial pad.

You can use the or to move the cursor. For example, to enter the letter a, press the **2** key on the dial pad once. To enter the number 3, press the **3** key on your dial pad seven times.

Press **OK** when you have entered all the characters, then press **1** to apply your settings. Go to step **12**.

11. Enter the user name and press **OK**. You can use the or to move the cursor. For example, to enter the letter a, press the **2** key on the dial pad once. Enter the password and press **OK**, and then press **1** to apply your settings. Go to step **12**.

12. Your machine will now try to connect to your wireless network using the information you have entered. If successful, Connected will appear briefly on the LCD. Connection NG is displayed when the print server has not successfully connected to your router or access point. Try starting from step **3** again. If the same message is displayed again, reset the print server back to the default factory settings and try again. (See

13. The machine will automatically acquire the correct TCP/IP address information from your access point (router) if DHCP is enabled (DHCP is normally enabled as default for most access point routers).

If your access point does not have DHCP enabled you will need to manually configure the IP address, subnet mask and gateway of the machine to suit your network. See the Network User's Guide for details.

Wireless setup is now complete.

Install the MFL-Pro Software Suite

1. Turn on your computer. (You must be logged on with Administrator rights.) Close any applications running before installing the MFLPro Suite.

Note Before installation, if you are using personal firewall software, disable it. After the installation, restart your personal firewall software.

2. Put the supplied CD-ROM into your CD-ROM drive. If the model name screen appears, choose your machine. If the language screen appears, choose your language.

3. The CD-ROM main menu will appear. Click **Install MFL-Pro Suite**.



Note

- If this window does not appear, use Windows® Explorer to run the **start.exe** program from the root folder of the Brother CD-ROM.
- For Windows Vista®, when the User Account Control screen appears, click **Allow**.



4. Choose **Wireless Network Connection**, and then click **Next**.



Note If you want to install the PS driver (Brother's BR-Script Driver), choose **Custom Install** and then follow the on-screen instructions. When the **Select Features** screen appears, check **PS Printer Driver**, and then continue following the on-screen instructions.

Click on the **Checked and confirmed** check box, and then click **Next**. Follow the on screen instructions.



6. After reading and accepting the ScanSoft™ PaperPort™ 11SE License Agreement, click **Yes**.



The installation of ScanSoft™ PaperPort™ 11SE will automatically start and is followed by the installation of MFL-Pro Suite.

7. When the Brother MFL-Pro Suite Software License Agreement window appears, click **Yes** if you agree to the Software License Agreement.



8. For Windows® XP SP2/XP Professional x64 Edition/Windows Vista® users, when this screen appears, choose **Change the Firewall port settings to enable network connection and continue with the installation. (Recommended)** and click **Next**.

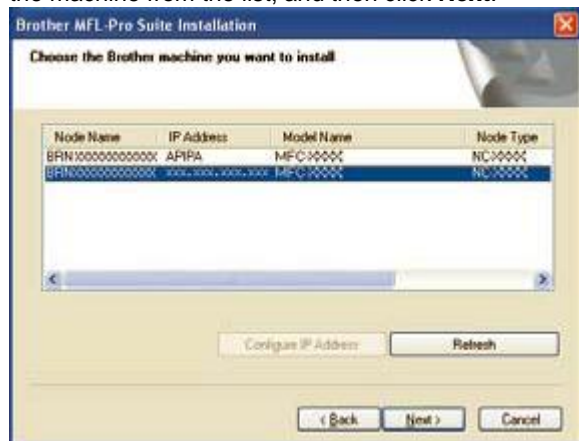


If you are not using the Windows® Firewall, see the User's Guide for your software for information on how

to add the following network ports.

- For network scanning, add UDP port 54925.
- For network PC-Fax receiving, add UDP port 54926.
- If you still have trouble with your network connection, add UDP port 137.

9. If the machine is configured for your network, choose the machine from the list, and then click **Next**.



If your machine shows **APIPA** in the **IP Address** field, click **Configure IP Address** and enter an **IP address** for your machine that is suitable for your network.

Note

- You can find your machine's IP address and the node name by printing out the Network Configuration List.
- If the machine is not yet configured for use on your network, the following screen appears.



Click **OK**. The **Configure IP Address** window will appear. Enter an **IP address** for your machine that is suitable for your network by following the onscreen instructions.

10. The installation of the Brother drivers will automatically start. **The installation screens appear one after another, please wait for a while.**

Improper Setup

DO NOT try to cancel any of the screens during this installation.

Note For Windows Vista®, when this screen appears, click the check box and click **Install**.



11. When the On-Line Registration screen is displayed, make your selection and follow the on-screen instructions. Once you have completed the registration process, close your web browser to return to this window. Then click **Next**.



12. Click **Finish** to restart your computer. (You must be logged on with Administrator rights.)



The MFL-Pro Suite has been installed and the installation is now complete.

Note

- **XML Paper Specification Printer Driver**
The XML Paper Specification Printer Driver is the most suitable driver when printing from applications that use XML Paper Specification documents. Please download the latest driver by accessing the Brother Solutions Center at <http://solutions.brother.com/>.
- **MFL-Pro Suite** includes the Network Printer Driver, Network Scanner Driver, Brother ControlCenter3 and ScanSoft™ PaperPort™ 11SE. ScanSoft™

PaperPort™ 11SE is a document management application for viewing scanned documents.

- *After restarting the computer, the **Installation Diagnostics** will run automatically. If the installation is unsuccessful, the installation results window will be shown. If the **Diagnostics** shows a failure, please follow the on-screen instructions or read the on-line help and FAQ's in **Start/All Programs/Brother/MFC-XXXX LAN**.*

YOU CAN NOW CLOSE THIS WINDOW AND RETURN TO THE WIRELESS PRINTING ASSISTANT