


## Important Before you begin you must know your wireless network settings.

Write down the wireless network settings of your access point or wireless router.

**SSID** (Service Set ID or Network name)

**Passkey/Passphrase**

## Manual setup from the control panel using the Setup Wizard

1. On the Touchscreen, press 

Press **Setup Wizard**.

2. When Enable WLAN? is displayed, press Yes. This will start the wireless setup wizard.

3. The machine will search for available SSIDs. It will take a few minutes to display a list of available SSIDs.

If a list of SSIDs is displayed, swipe up or down, or press ▲ or ▼ to choose the SSID you wrote down. Press OK.

### NOTE

- If a list of SSIDs is not displayed, make sure your access point is on. Move your machine closer to the access point and try starting from a again.
- If your access point is set to not broadcast the SSID, you will have to manually add the SSID name. For details, see the Network User's Guide.

4. Do one of the following:



If the wireless access point/router of the selected SSID supports WPS and the machine asks to use WPS, go to step 5.

If you are using an authentication and encryption method that requires a Network Key, go to step 6. If your authentication method is Open System and your encryption mode is None, go to step 7.

5. To connect your machine using the automatic wireless mode, press Yes. (If you choose No (Manual), go to f to enter the Network Key.) When the Touchscreen instructs you to start WPS, press the WPS button on your wireless access point/router, and then press Next on the Touchscreen. Go to step 6.

6. Enter the Network Key you wrote down using the numbers and characters on the Touchscreen.

### NOTE

- To enter numbers or special characters, press  repeatedly until the character you want to enter appears, then press the character you want.
- If you entered a character incorrectly and want to change it, press ◀ or ▶ to move the cursor to the incorrect character, then press .
- To enter a space, press Space.

Press **OK** when you have entered all the characters, and then press **Yes** to apply your settings.

7. Your machine will now try to connect to your wireless network using the information you have entered.

A connection result message appears on the Touchscreen and a WLAN report will automatically print.

If the connection failed, check the error code on the printed report and refer to *Troubleshooting* ►► page 30.

Press OK.

## Wireless setup is now complete.

A four-level indicator at the top right of your machine's Touchscreen will show the wireless signal strength of your wireless access point/router.

## Install the drivers & software

Make sure that your computer is ON and you are logged on with Administrator rights.

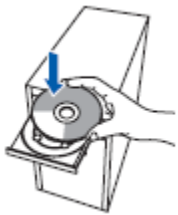
### IMPORTANT

- If there are any programs running, close them.
- The screens may differ depending on your operating system.

### Note

- The screens may differ depending on your operating system.
- The CD-ROM includes Nuance™ PaperPort™ 12SE. This software supports Windows® XP Home (SP3 or greater), XP Professional (SP3 or greater), XP Professional x64 Edition (SP2 or greater), Windows Vista® (SP2 or greater) and Windows® 7. Update to the latest Windows® Service Pack before installing MFL-Pro Suite.
- Disable all personal firewall software (other than Windows® Firewall), anti-spyware or antivirus applications for the duration of the installation.

1. Put the supplied CD-ROM into your CD-ROM drive. If the model name screen appears, choose your machine. If the language screen appears, choose your language.



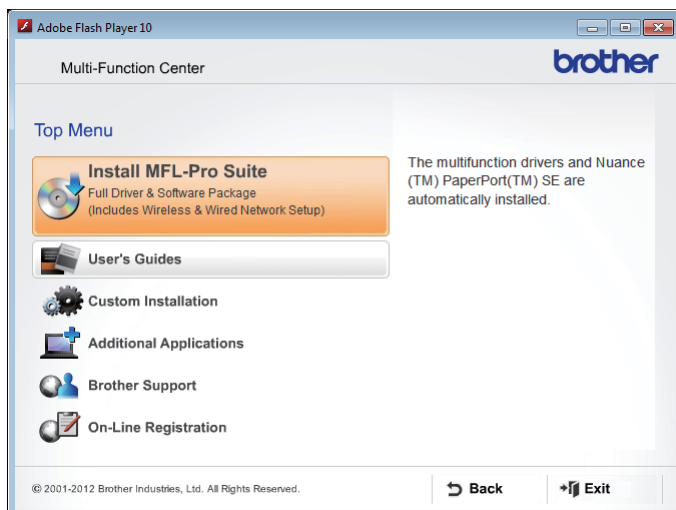
## Note

- If the Brother screen does not appear automatically, go to Computer (My Computer).

(For Windows® 8: click the File Explorer icon on the taskbar, and then go to Computer.)  
Double-click the CD-ROM icon, and then double-click start.exe.

- If the User Account Control screen appears, click Continue or Yes.

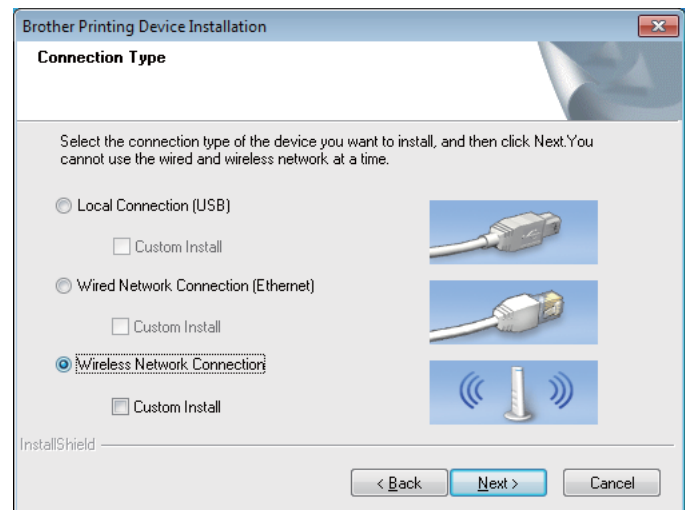
2. Click **Install MFL-Pro Suite**, and click **Yes** in the next two windows if you accept the license agreements.



## NOTE

If the installation does not continue automatically, restart the installation by ejecting and then reinserting the CD-ROM or by double-clicking the **start.exe** program from the root folder. Continue from step b to install MFL-Pro Suite.

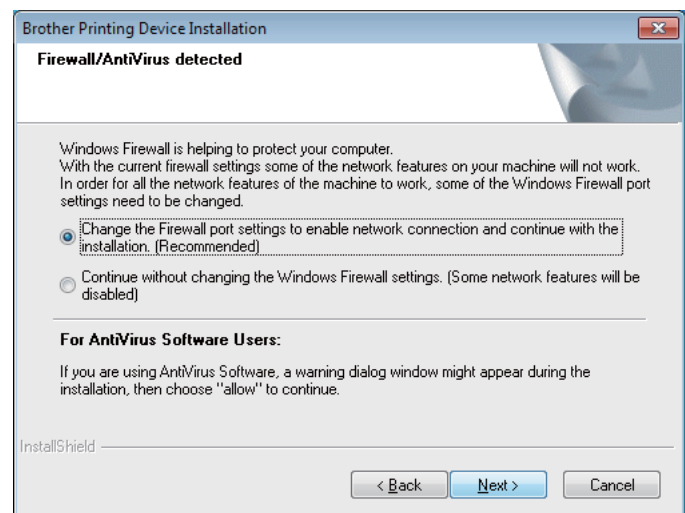
3. Choose **Wireless Network Connection**, and then click **Next**.



## NOTE

To install the PS driver (BR-Script3 printer driver), choose **Custom Install**, and then follow the on-screen instructions.

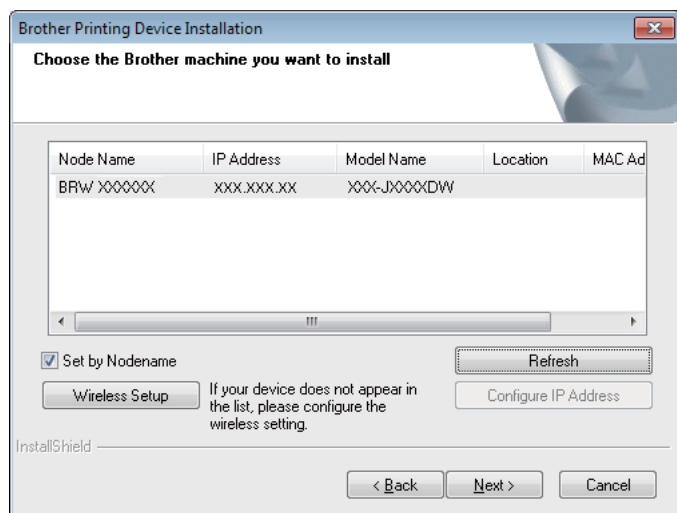
4. When the **Firewall/AntiVirus detected** screen appears, choose **Change the Firewall port settings to enable network connection and continue with the installation. (Recommended)** and click **Next**.



If you are not using the Windows® Firewall, see the user's guide for your software for information on how to add the following network ports:

- For network scanning, add UDP port 54925.
- For network PC-Fax receiving, add UDP port 54926.
- If you still have trouble with your network connection, add UDP ports 161 and 137.

5. Choose your machine from the list, and then click **Next**.



## NOTE

- If your wireless settings fail, click the **Wireless Setup** button and follow the on-screen instructions to complete the wireless configuration.
- If you are using WEP and the Touchscreen displays Connected but your machine is not found, make sure you entered the WEP key correctly. The WEP key is **case-sensitive**.

6. The installation will automatically continue. The installation screens appear one after another. If prompted, follow any on-screen instructions.

## IMPORTANT

DO NOT cancel any of the screens during the installation. It may take a few seconds for all screens to appear.

## NOTE

If the **Windows Security** screen appears, select the check box and click **Install** to complete the installation correctly.

7. When the **On-Line Registration** screen appears, make your selection and follow the on-screen instructions. Once you have completed the registration process, click **Next**.

8. When the **Setup is Complete** screen appears, make your selection, and then click **Next**.

## NOTE

- If an error message appears during the software installation, run the **Installation Diagnostics** located in **Start/All Programs/Brother/MFC-JXXX** (where MFC-JXXX is your model name).
- Depending on your security settings, a Windows® Security or antivirus software window may appear when using the machine or its software. Please allow the window to continue.

9. The following screens will appear.

- When the **Software Update Setting** screen appears, choose the software update setting you want and click **OK**.
- When the Brother Product Research and Support Program screen appears, select your preference and follow the on-screen instructions.

## NOTE

Internet access is required for the software update and the Brother Product Research & Support Program.