

Connecting the Brother machine to the wireless network

Configure the wireless settings (Typical Wireless Setup in infrastructure mode)

1. On your machine, press Menu. Press ▲ or ▼ to choose Network and press OK.

Press ▲ or ▼ to choose WLAN and press OK.

Press ▲ or ▼ to choose Setup Wizard and press OK.

When Network I/F switched to Wireless is displayed, press OK to accept.

This will start the wireless setup wizard.

To cancel, press Clear/Back.

2. The machine will search for available SSIDs.

If a list of SSIDs is displayed, use the ▲ or ▼ keys to choose the SSID you wrote down, then press OK. Go to Step 6.

Note: It will take several seconds to display a list of available SSIDs.

If your access point is set to not broadcast the SSID you will have to manually add the SSID name. Go to Step 3.

3. Press ▲ or ▼ to choose <New SSID> and press **OK**. Go to Step 4.

4. Enter the SSID you wrote down in step 16 on page 30 using the dial pad to choose each letter or number. You can use the **d** and **c** keys to move the cursor left and right. For example, to enter the letter a, press the **2** key on the dial pad once. To enter the number 3, press the **3** key on the dial pad seven times.

The letters appear in this order: lower case, upper case and then numbers.

(For more information, see *Entering Text for Wireless Settings* on page 46.)

Press **OK** when you have entered all the characters.

5. Press ▲ or ▼ to choose Infrastructure, then press **OK**.

6. Use the a, b and **OK** keys to choose one of the options below: If your network is configured for Authentication and Encryption you must match the settings used for your network.

- No Authentication or Encryption: Choose Open System, press OK then choose None for Encryption Type and press

OK. Then press 1 for Yes to apply your settings. Go to Step 9.

- No Authentication with WEP Encryption: Choose Open System, press OK then use the ▲ or ▼ to choose WEP for the Encryption Type and press OK. Go to Step 7.
- Authentication with WEP Encryption: Choose Shared Key and press OK. Go to Step 7.
- Authentication with WPA/WPA2-PSK (TKIP or AES) Encryption: Choose WPA/WPA2-PSK and press OK. Go to Step 8.

7. Choose the appropriate key number and press **OK**. Enter the WEP key you wrote down in step 16 on page 30 using the dial pad to choose each letter or number.

You can use the ◀ and ▶ keys to move the cursor left and right. For example, to enter the letter a, press the 2 key on the dial pad once. To enter the number 3, press the 3 key on the dial pad seven times.

The letters appear in this order: lower case, upper case and then numbers.

Press **OK** when you have entered all the characters, then press **1** for Yes to apply your settings. Go to Step 9.

8. Press ▲ or ▼ to choose TKIP or AES for Encryption Type and press **OK**. Enter the WPA/WPA2-PSK password you wrote down using the dial pad to choose each letter or number.

You can use the ◀ and ▶ keys to move the cursor left and right. For example, to enter the letter a, press the 2 key on the dial pad once. To enter the number 3, press the 3 key on the dial pad seven times.

The letters appear in this order: lower case, upper case and then numbers.

Press **OK** when you have entered all the characters, then press 1 for Yes to apply your settings. Go to Step 9.

9. Your machine will now try to connect to your wireless network using the information you have entered. If successful, "Connected" will appear briefly on the LCD.

If your machine does not successfully connect to your network, verify your network settings

collected, then repeat **Steps 1 to 8** to make sure you have entered the correct information.

If your access point does not have DHCP enabled you will need to manually configure the IP address, subnet mask and gateway of the machine to suit your network. See the Network User's Guide for details.

Wireless setup is now complete. A four level indicator at the top of your machine's LCD will show the wireless signal strength of your access point or router.

To install MFL-Pro Suite, continue

Before you install MFL-Pro Suite make sure that your computer is ON and you are logged on with Administrator rights.

Important

Before installation, if you are using personal firewall software (other than Windows® Firewall), anti-spyware or antivirus applications, temporarily disable them.

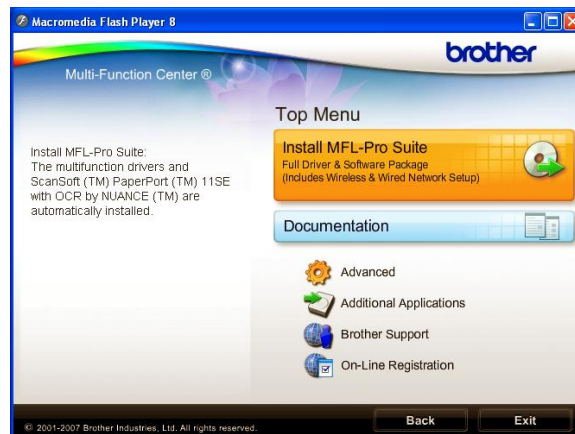
- If there are any programs running, close them.
- Make sure there are no memory cards or a USB Flash memory drive inserted.
- The screens may differ depending on the operating system.
- The supplied CD-ROM includes ScanSoft™ PaperPort™ 11SE. This software supports Windows® 2000 (SP4 or greater), XP (SP2 or greater), XP Professional x64 Edition and Windows Vista®. Update to the latest Windows® Service Pack before installing MFL-Pro Suite.

Install MFL-Pro Suite for Windows

1. Put the supplied CD-ROM into your CD-ROM drive. If the model name screen appears, choose your machine. If the language screen appears, choose your language.

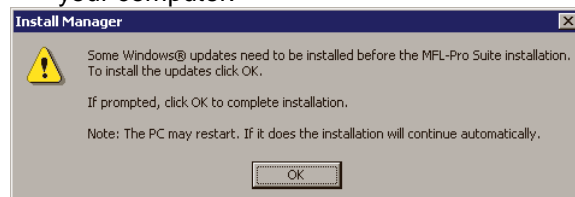
Note: If the Brother screen does not appear automatically, go to My Computer (Computer), double-click the CD-ROM icon, and then double-click start.exe.

2. The CD-ROM main menu will appear. Click InstallMFL-ProSuite.

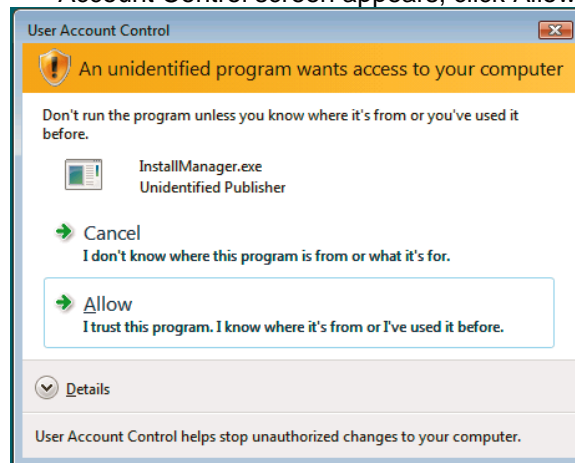


Note

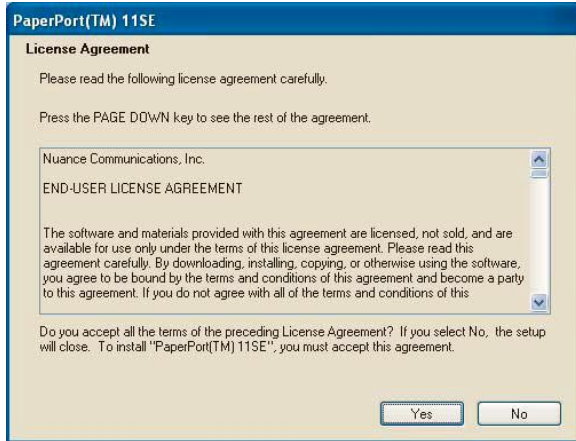
- If this screen appears, click OK and restart your computer.



- If the installation does not continue automatically, open the main menu again by ejecting and then reinserting the CD-ROM or double-click the start.exe program from the root folder, and continue from b to install MFL Pro Suite.
- For Windows Vista®, when the User Account Control screen appears, click Allow.

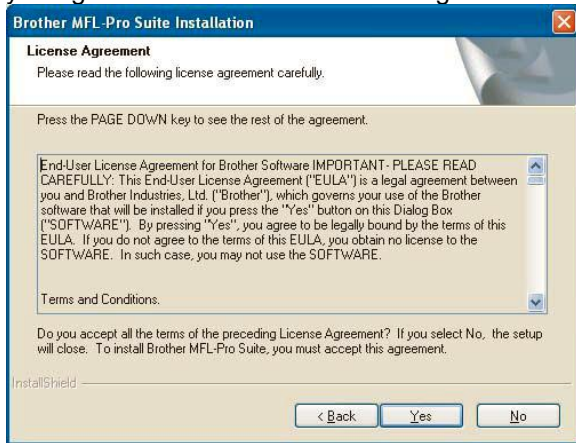


3. When the ScanSoft™ PaperPort™ 11SE License Agreement window appears, click Yes if you agree to the Software License Agreement.



4. The installation of ScanSoft™ PaperPort™ 11SE will automatically start and is followed by the installation of MFL-Pro Suite.

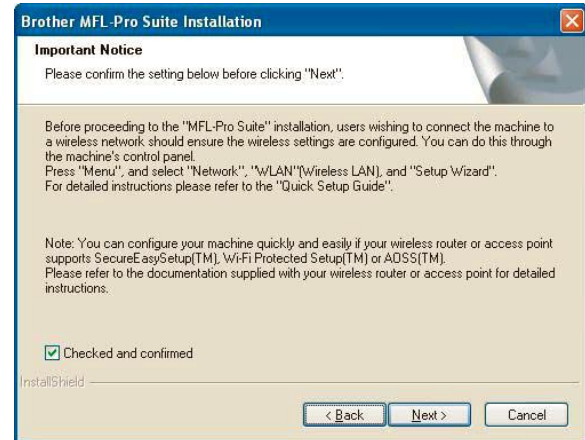
5. When the Brother MFL-Pro Suite Software License Agreement window appears, click Yes if you agree to the Software License Agreement.



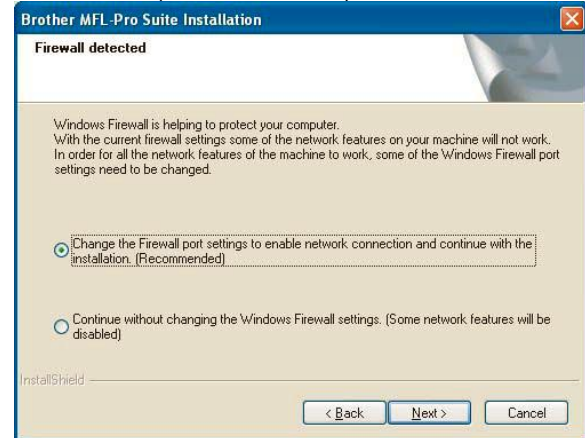
6. Choose Wireless Network Connection, then click Next.



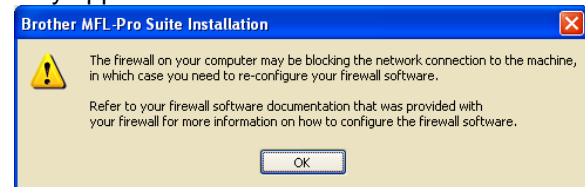
7. Click on Checked and confirmed check box, then click Next.



8. For Windows® XP SP2/Windows Vista® users, when this screen appears, choose Change the Firewall port settings to enable network connection and continue with the installation. (Recommended) and click Next.



If you are using a firewall other than Windows® Firewall or Windows® Firewall is off, this screen may appear.



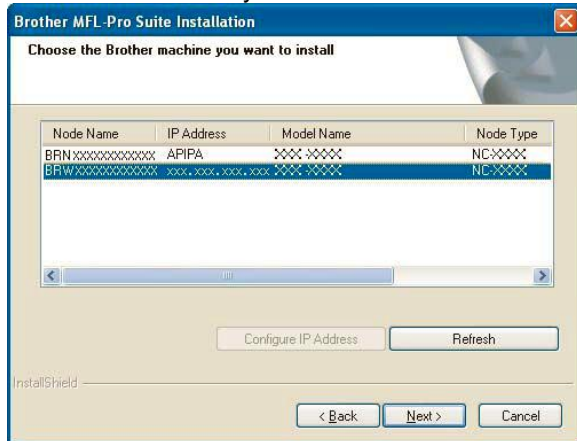
See the instructions provided with your firewall software for information on how to add the following network ports.

- For network scanning, add UDP port 54925.
- For network PC-Fax receiving, add UDP port 54926.

- If you still have trouble with your network connection, add UDP port 137.

Note: If the machine is configured for your network, choose the machine from the list, then click Next.

This window will not appear if there is only one machine connected on the network, it will be chosen automatically.



If your machine shows APIPA in the IP Address field, click Configure IP Address and enter an IP address for your machine that is suitable for your network.



- If your wireless settings fail, an error message will appear during the installation of MFL-Pro Suite and the installation will be terminated. If you encounter this failure, go to step 16 on page 30 and setup the wireless connection again.
- If you are using WEP and the LCD displayed 'Connected' but your machine is not found, make sure you entered the WEP key correctly. The WEP key is case sensitive.
- If the machine is not yet configured for use on your network, the following screen appears.



Click OK.

The Configure IP Address window will appear. Enter an IP address for your machine that is suitable for your network by following the on-screen instructions.

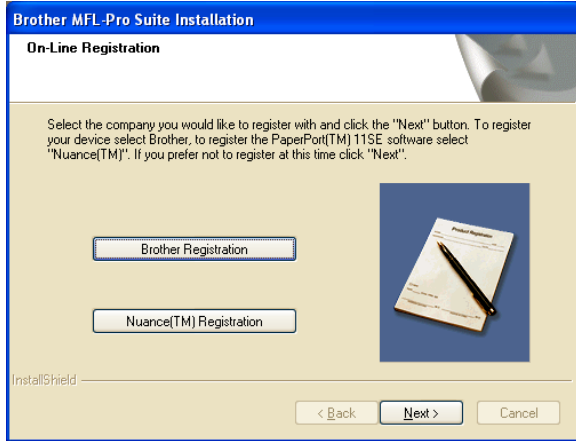
9. The installation of the Brother drivers will automatically start. The installation screens appear one after another.

Important DO NOT cancel any of the screens during the installation. It may take a few seconds for all screens to appear.

Note: For Windows Vista®, when this screen appears, click the check box and click Install to complete the installation correctly.



10. When the On-Line Registration screen is displayed, make your selection and follow the on-screen instructions. Once you have completed the registration process, close your web browser to return to this window, then click Next.



11. Click Finish to restart your computer. After restarting the computer, you must be logged on with Administrator rights.



Note

If an error message appears during the software installation, run the Installation Diagnostics located in Start/All Programs/Brother/MFC-XXXX (where MFC-XXXX is your model name).

The installation is now complete.

YOU CAN NOW CLOSE THIS WINDOW AND RETURN TO THE WIRELESS PRINTING ASSISTANT