

HL-5200 SERIES Laser Printers for Business



HL-5240

HL-5250DN

A family of printing workhorses for your office or small workgroup

Featuring...

- Up to 30 pages per minute
- Up to 1200x1200dpi resolution
- PCL®6 and BR-Script3² emulations standard
- 300-sheet standard input capacity
 - 250-sheet paper tray capacity
 - 50-sheet multi-purpose tray capacity
- Up to 800-sheet total input capacity via two optional paper trays¹
- Parallel and USB 2.0 interfaces³
- Windows® and Mac® compatible

HL-5280DW



At your side.™
brother®

HL-5200 Series

For Office Desktops & Workgroups

The HL-5200 Series laser printers from Brother are ideal solutions for desktop, workgroup and wireless users.

With their fast print speeds, outstanding print quality, expandable paper input capacity, flexible paper handling, range of connectivity choices and excellent compatibility, these Brother laser printers are designed to meet the needs of virtually any monochrome laser printer user.

Easy to use control panel with job-cancel button

50-sheet multi-purpose tray capacity

250-sheet paper tray capacity

150-sheet output tray capacity

Upgradeable memory

Built-in automatic duplex feature⁴

Up to 1200x1200dpi print quality

Shown with two optional paper trays¹



HL-5240



The HL-5240 is a printing workhorse for your business. Operating at print speeds up to 30 pages per minute, this printer is ideally suited for a busy desktop or office user.

The fast HL-5240 delivers up to 1200x1200dpi print quality and can easily produce reports, spreadsheets and correspondence with print quality you can be proud of.

HL-5250DN / HL-5250DNT – Network-Ready

The HL-5250DN is an excellent choice for you or your workgroup, with the same print speed and paper capacity as the HL-5240, plus duplex printing, networking, and other enhancements for greater versatility.



The HL-5250DNT is ideal for individuals or workgroups who want all the features of the HL-5250DN, with extra paper input capacity.

Both have a built-in Ethernet network interface³ and include a comprehensive set of management tools to perform essential printer management tasks over your network.

HL-5280DW – Wireless Network-Ready



The HL-5280DW provides flexible and affordable connectivity for wired and wireless workgroups. It includes High Speed USB 2.0, Parallel and Ethernet interfaces³, and an 802.11b/g interface for wireless laser printing.

It also has an advanced user control panel with a 3-color LCD display to instantly view the printer's status as well as set-up and configure the printer's default settings quickly and easily.



This printer features a secure print capability that helps ensure that only the person who is supposed to see your printed materials actually does.



Print quality

1200 DPI
up to **x1200**

The HL-5200 Series deliver up to true 1200x1200dpi resolution that results in high-quality output for all your printed materials.

Paper handling

Each of the HL-5200 Series laser printers arrives with a 300-sheet paper input capacity. With a 250-sheet universal paper tray and 50-sheet fold-down multi-purpose tray, you can easily accommodate printing on both letterhead and envelopes.



Total input capacity can be expanded to 800-sheets by adding up to two, 250-sheet lower paper trays¹.

Built-in duplex



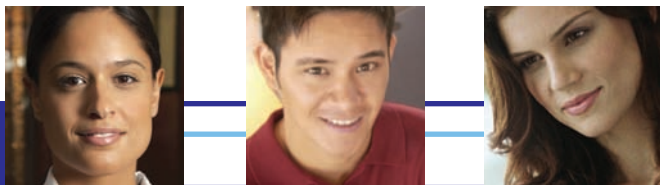
You can produce professional looking documents, brochures, booklets, manuals and other two-sided documents using the automatic duplex feature on the HL-5250DN, HL-5250DNT and HL-5280DW.

Duplex printing can increase your productivity and reduce costs by allowing you to produce two-sided materials right from your desktop.

Compatibility

The HL-5200 Series are both PC and Mac[®] compatible right out of the box, and arrive with a complete set of drivers for both platforms. Automatic emulation switching make them ideal for environments with a mix of these most common operating systems.

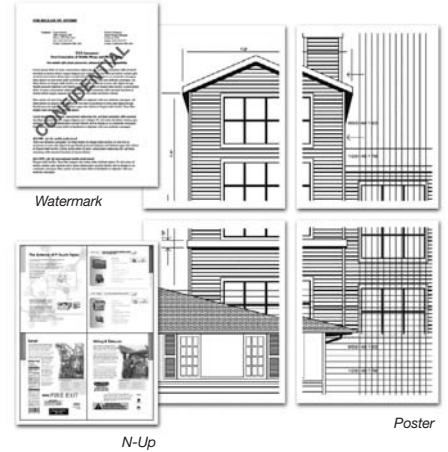
All of the HL-5200 Series laser printers offer a variety of emulations, including PCL[®]6, BR-Script³, IBM Proprinter, and Epson FX.



More advanced print functions

The HL-5200 Series printers offer many additional advanced features⁵ that will exceed your expectations and reaffirm their value. These include:

- Toner Save Mode
- Booklet Printing
- Watermark Printing
- N-Up Printing
- Poster Printing
- Job Cancel
- IPP Printing⁴
- Automatic Duplex Printing⁴



Service and support are part of the package

Your technology investment is backed by our dedication to comprehensive service and support.

First, the HL-5200 Series printers feature a wide variety of innovative and useful support tools on-line, as well as on the CD included in the box.



For added support, the Brother Solutions Center is an on-line repository of information, driver downloads, and FAQ's to help you get the most out of your printer.

Finally, we provide toll-free technical support, a one-year limited warranty, and a nationwide network of authorized customer care centers.

HL-5200 SERIES Laser Printers for Business



With fast print speeds, high-quality output, excellent compatibility, flexible paper handling and versatile connectivity, the HL-5200 Series printers are your best choice for busy offices or workgroups.

HL-5240

High-speed desktop office laser printer

- ◆ Up to 30ppm print speed
- ◆ Up to 1200x1200dpi print quality
- ◆ 16MB of memory standard, upgradeable to 528MB¹
- ◆ PCL[®]6 and BR-Script³ emulations
- ◆ 300-sheet standard paper input capacity via a 250-sheet paper tray and a 50-sheet multi-purpose tray

HL-5250DN

Network ready laser printer with duplex

The HL-5250DN includes all of the features of the HL-5240, plus:

- ◆ Built-in Ethernet network interface³
- ◆ Automatic duplex for two-sided printing
- ◆ 32MB of memory standard, upgradeable to 544MB¹
- ◆ The HL-5250DNT also includes an additional 250-sheet lower paper tray

HL-5280DW

Network laser printer with built-in duplex and wireless connectivity

The HL-5280DW includes all of the features of the HL-5250DN, plus:

- ◆ Built-in 802.11b/g wireless interface
- ◆ 3-color LCD display for instant printer status

UPC codes

HL-5240	–	012502614432
HL-5250DN	–	012502614449
HL-5250DNT	–	012502614647
HL-5280DW	–	012502614456

HL-5200 Series Product Specifications

Model

- ◆ **Print Technology:**
Electrophotographic laser
- ◆ **Print Speed:**
Up to 30ppm; up to 13 sides per minute in duplex mode
- ◆ **Time to First Page:**
< 8.5 seconds
- ◆ **Resolution:**
300dpi, 600dpi, HQ1200⁹, 1200dpi
- ◆ **Memory:**
16MB, up to 528MB via 144-pin DIMM¹ (HL-5240)
32MB, up to 544MB via 144-pin DIMM¹ (HL-5250DN/
HL-5250DNT/HL-5280DW)
- ◆ **Processor:**
NEC VR5500 266MHz
- ◆ **Printer Emulations:**
PCL[®]6, BR-Script³, IBM Proprinter and Epson FX
- ◆ **Resident Fonts:**
PCL: 66 scalable fonts, 12 bitmap, 11 bar codes
BR-Script³: 66 scalable fonts
- ◆ **Interfaces²:**
IEEE 1284 Parallel, High Speed USB 2.0 (All models)
10/100 BaseT Ethernet (HL-5250DN/DNT/HL-5280DW)
802.11b/g Wireless (HL-5280DW)

Paper Handling⁸

- ◆ **Standard Input Capacity:**
250-sheet paper tray
50-sheet multi-purpose tray
- ◆ **Optional Input¹:**
Up to 800-sheet capacity via (2) 250-sheet paper trays
- ◆ **Output Capacity:**
150 sheets face down
- ◆ **Duplex Printing:**
Standard on HL-5250DN/HL-5250DNT/HL-5280DW
- ◆ **Paper Sizes:**
Letter, Legal, Exec, A4, A5, A6, B5, B6
Envelopes: Com 10, DL, B5, C5
- ◆ **Media Types:**
Plain paper, bond, envelopes, labels, transparencies
- ◆ **Media Weights:**
Standard paper tray - 16 to 28 lbs. (bond)
Multi-purpose tray - 16 to 43 lbs. (bond)

Software

- ◆ **Printer Drivers:**
Windows[®] 95/98/NT 4.0/Me/2000/XP
Mac[®] OS 9.1-9.2, OS X 10.2.4 or greater
Linux: Red Hat, Mandrake, SuSE, Debian
PostScript[®]3™ PPD
- ◆ **Other Software:**
Interactive Help, Driver Deployment Wizard⁴

Networking

- ◆ **Multi-Protocol Support:**
HL-5250DN/HL-5250DNT/HL-5280DW: TCP/IP,
Apple's Simple Network Configuration
for OS X 10.2.4 or greater
- ◆ **Network Management Tools:**
Web-BRAdmin⁷, BRAdmin Professional, Web-based
Management, BRAdmin Light (Mac[®] OS X)
- ◆ **Wireless Network Security (HL-5280DW only):**
WEP, WPA-PSK (TKIP/AES), LEAP, SecureEasySetup™

Physical Dimensions

- ◆ **Size / Weight:**
14.6"(w) x 15.1"(d) x 9.7"(h)/20.9 lbs. (HL-5240)
14.6"(w) x 15.1"(d) x 9.7"(h)/21.6 lbs. (HL-5250DN)
14.6"(w) x 15.1"(d) x 13.7"(h)/26.8 lbs. (HL-5250DNT)
15.5"(w) x 15.1"(d) x 10.2"(h)/22.4 lbs. (HL-5280DW)

Electrical

- ◆ **Power Requirements:**
120 VAC +/- 10% 50/60 Hz
- ◆ **Power Consumption (Avg.):**
Printing: 610W/Standby 80W
Sleep mode: 8W (HL-5240); 9W (HL-5250DN/DNT);
15W (HL-5280DW)

Environmental

- ◆ **Temperature:**
50°F to 90.5°F (10°C to 32.5°C)
- ◆ **Humidity:**
20% - 80% (without condensation)
- ◆ **Noise Level:**
Sound Pressure: Printing: LpAm 53dB (A)
Standby: LpAm 27dB (A)
Sound Power: Printing: LWAd 6.7B (A)
Standby: LWAd 4.3B (A)

Service

- ◆ **Warranty / Service:**
One-year limited express exchange/parts and labor

Supplies and Yields⁶

- ◆ **Toner:**
TN-550/TN-580: Approx. 3,500/7,000 pages⁸
- ◆ **Drum:**
DR-520: Approx. 25,000 pages

Options and Accessories¹

- | Item | Part Number |
|--------------------------------|-------------|
| Standard Yield Toner Cartridge | TN-550 |
| High-Yield Toner Cartridge | TN-580 |
| Drum Unit | DR-520 |
| Lower Paper Tray Unit | LT-5300 |
| External Ethernet Print Server | NC-2100p |

Consult your Brother representative for more details. For more information, please visit our Web site at www.brother.com or call (908) 704-1700.

¹ Additional purchase required ² PostScript[®]3™ emulation ³ Cables not included
⁴ Not available on HL-5240 ⁵ Some advanced features are not supported under
all operating systems or drivers. See User's Guide on-line for details ⁶ Supply
yields are approximate, based on 5% page coverage (letter) ⁷ Download at
<http://solutions.brother.com>. Requires IIS Server ⁸ All references to sheets of
paper refer to 20 lb paper ⁹ Actual resolution is up to 2400x600dpi. PostScript
is a trademark of Adobe Systems, Inc. Mac and the Mac logo are trademarks
of Apple Computer, Inc., registered in the U.S. and other countries. Microsoft,
Windows, and the Windows logo are trademarks, or registered trademarks of
Microsoft Corporation in the United States and/or other countries. All brand and
product names are trademarks or registered trademarks of their respective
companies. Printed in the U.S.A. All specifications subject to change without notice.



©2005 Brother International Corporation
100 Somerset Corporate Boulevard
Bridgewater, NJ 08807-0911

At your side.[™]
brother
www.brother.com

CATHL5200
10-05