

## PART I: Configure the Wireless Network Card

1. Insert the Brother Drivers and Utilities CD into your PC.

**NOTE: If the Brother screen does not appear automatically, go to My Computer (Computer), double-click the CD-ROM icon, and then double-click start.exe. US English speakers should select USA, not ENG.**

2. Select the **HL-2270DW**.



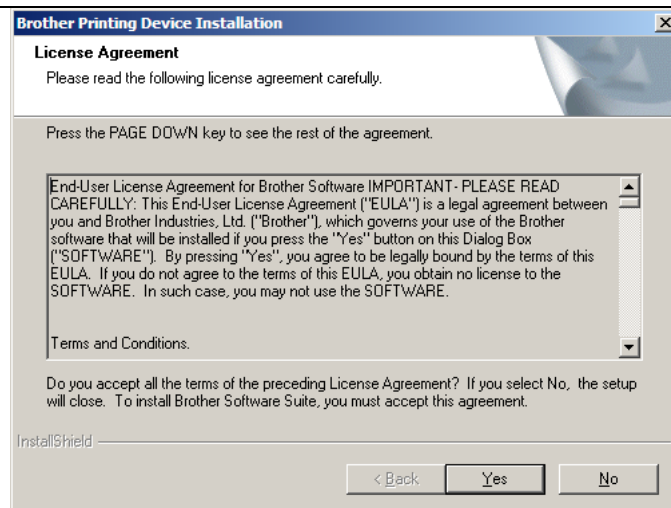
3. Select Language: **English**.



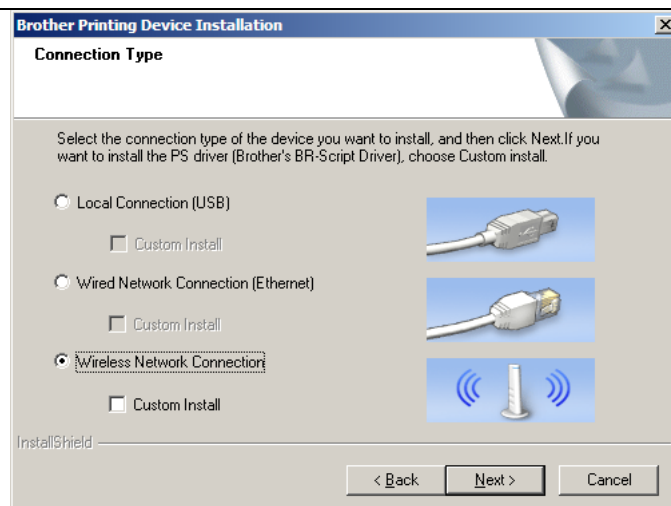
4. Click **Install Printer Driver** (U.S.A./Canada/Latin America).



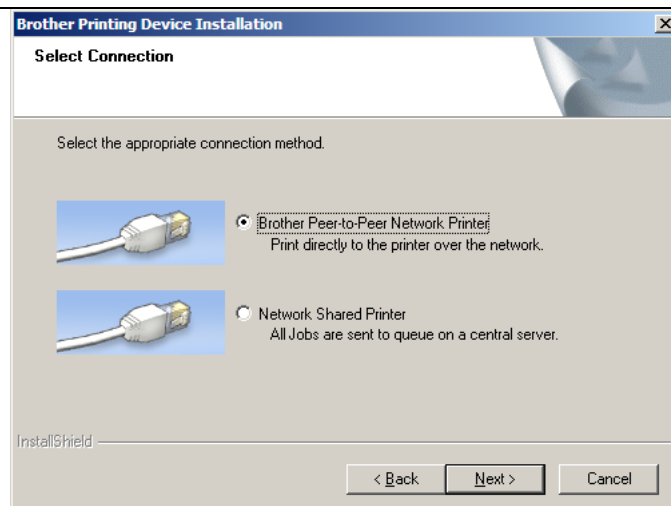
5. Read the License Agreement: Click **Yes** if you agree.



6. Select **Wireless Network Connection**. Click **Next**.

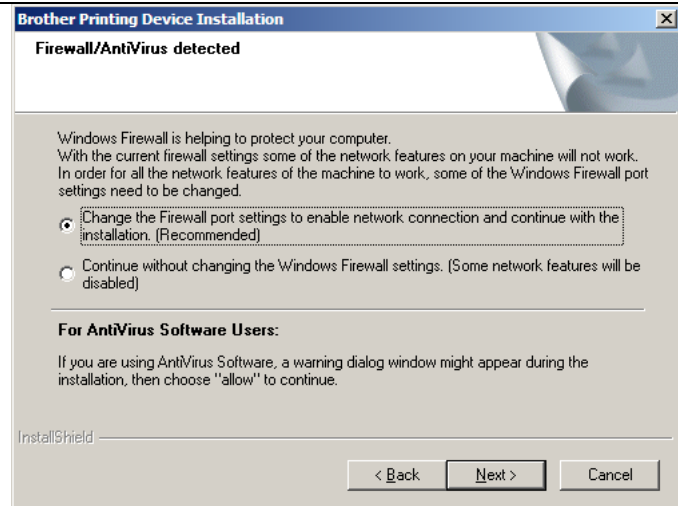


7. Select **Brother Peer-To-Peer Network Printer**. Click **Next**.

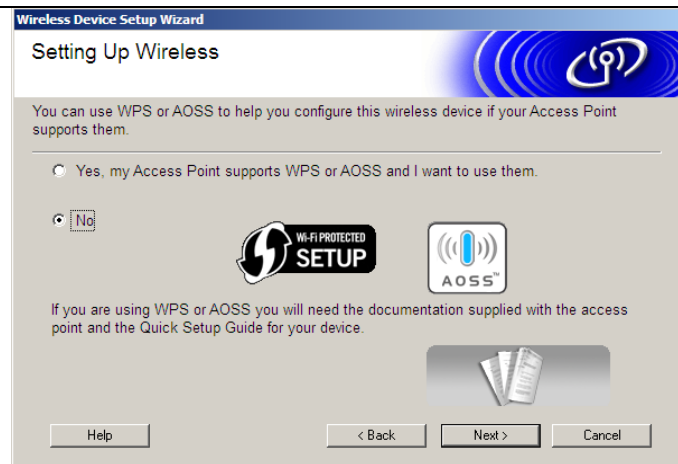


8. Read the notice for Firewall/Antivirus Software users: Click **Next**.

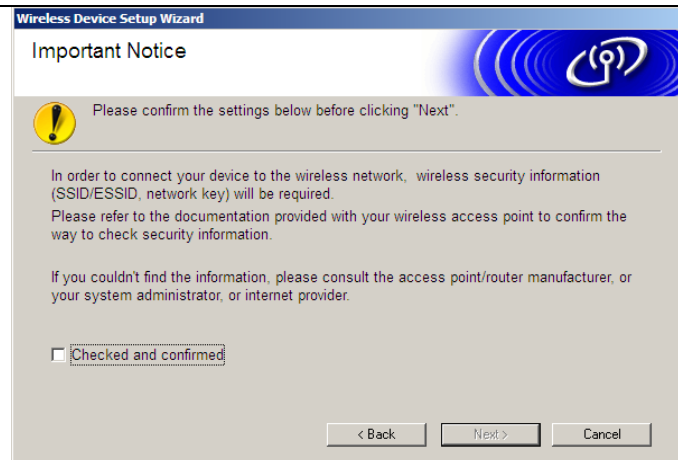
**NOTE: If the driver is already installed, a "Select Features" screen will appear. The screen gives an option for 'Network Printer Driver' and "Status Monitor" and both are checked by default. If you see this screen, click NEXT.**



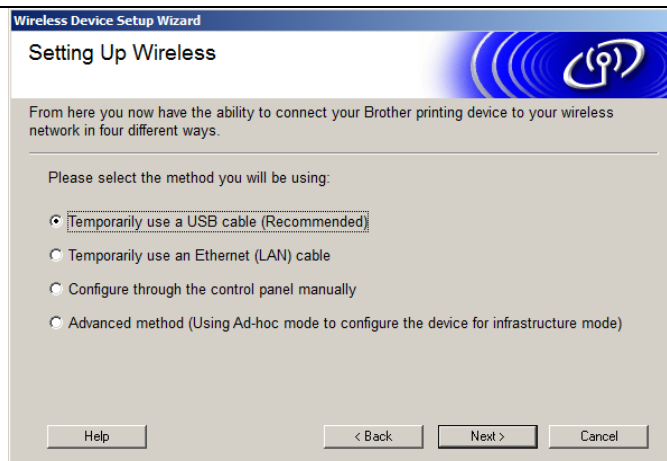
9. Select **No** to configure the wireless network card manually. Click **Next**.



10. Confirm you know your wireless network SSID. Check the **Checked and Confirmed** box and click **Next**.

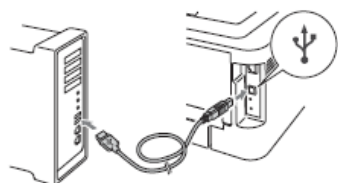


11. Choose **Temporarily use a USB cable (Recommended)** and then click **Next**.



12. Temporarily connect the USB cable (not included) directly to the computer and the machine. Make sure the machine is powered on.

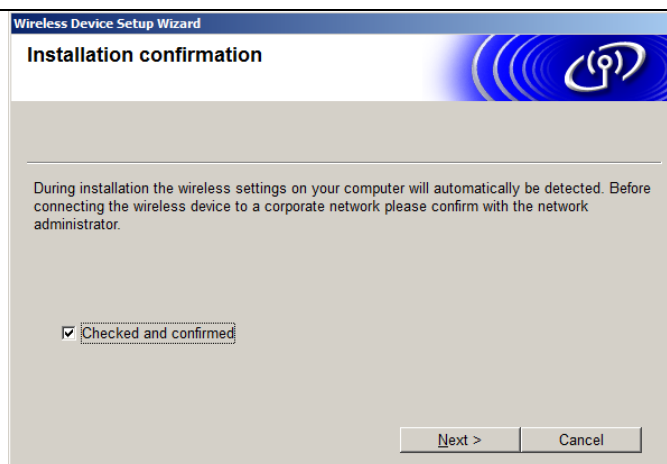
**NOTE: This step may take a few minutes for the USB driver to be installed. You will see the Found New Hardware Wizard installing the driver in the task tray (bottom right corner of screen)**



**NOTE: If the installation freezes at this point, verify the USB cable is securely connected to the printer and PC. If it still does not continue, cancel the installation and select another method of installation.**



13. Your wireless settings will automatically be detected. Click the **Checked and Confirmed** box and click **Next**.



14. Your SSID will be displayed. If this is correct, click **Next** to send this information to the printer.

**Wireless Device Setup Wizard**

**Detecting existing wireless network settings on your Computer**

The wireless network settings of your computer have been detected.

The wireless network name detected (Wireless Access Point/Router name):

SSID: Brother

Would you like to connect to the wireless network using these settings?

☒ Yes  
☐ No

Next > Cancel

15. Click **Next**. The settings will be sent to your machine.

**NOTE:**

- The settings will remain unchanged if you click **Cancel**.
- If you want to manually enter the IP address settings of your machine, click **Change IP Address** and enter the necessary IP address settings for your network.

**Wireless Device Setup Wizard**

**Wireless Network Settings Confirmation**

Click "Next" to submit following settings to the device

Target Device =	BRW002258100A98	Change IP Address
IP Address	Auto	
Communication mode	Infrastructure	
Name (SSID)	Brother	

After clicking "Next", the "WLAN Report" Page will be printed by the device. Please check it to confirm the connection result.

Help < Back Next > Cancel

16. Disconnect the USB cable between the computer and the machine.

**Wireless Device Setup Wizard**

**Disconnecting Your Device and Your Computer**

Please disconnect the USB cable between your computer and the device.

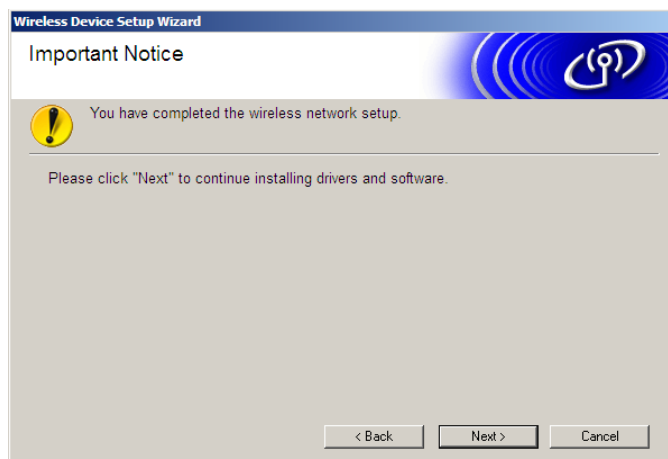
Next > Cancel



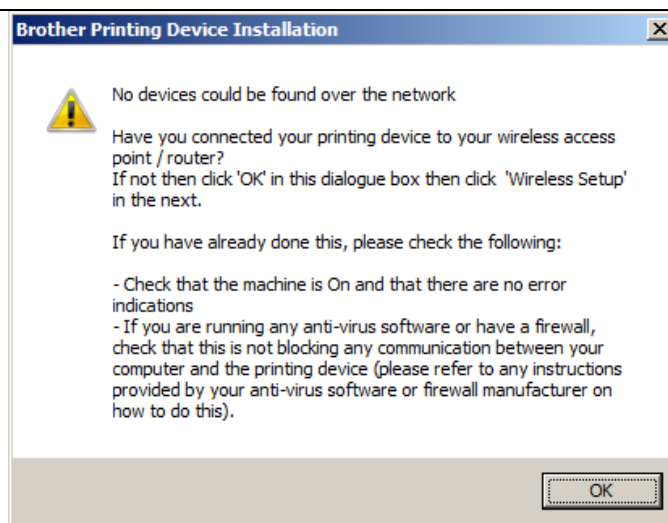
**Wireless setup is now complete.**

## PART II: Install the Printer Driver

1. Click **Next** to install the printer driver.



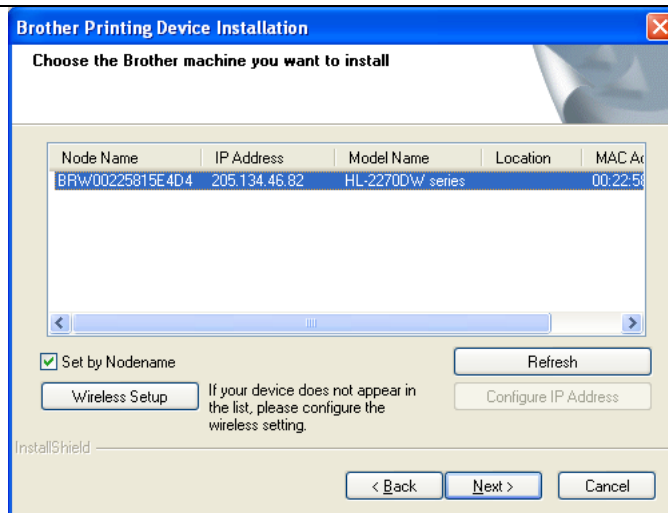
**NOTE:** If the following screen appears, please reset the router by powering it off, then back on. Wait 60 seconds and click **OK** to search again.



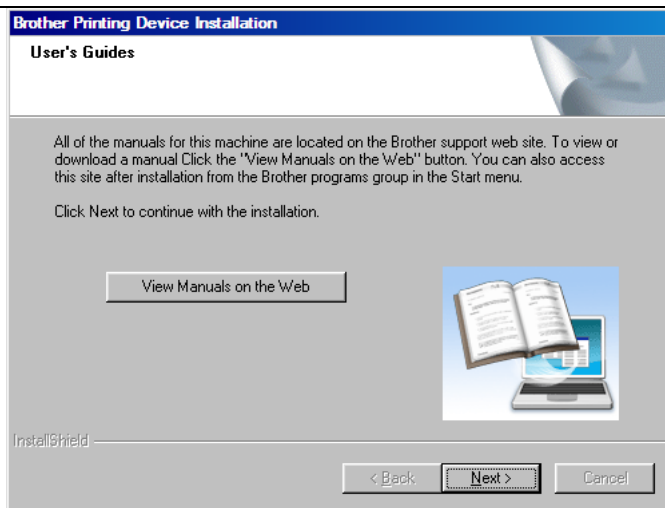
2. If the printer is listed and has a valid IP address, select the printer from the list and click **Next**.

**NOTE:**

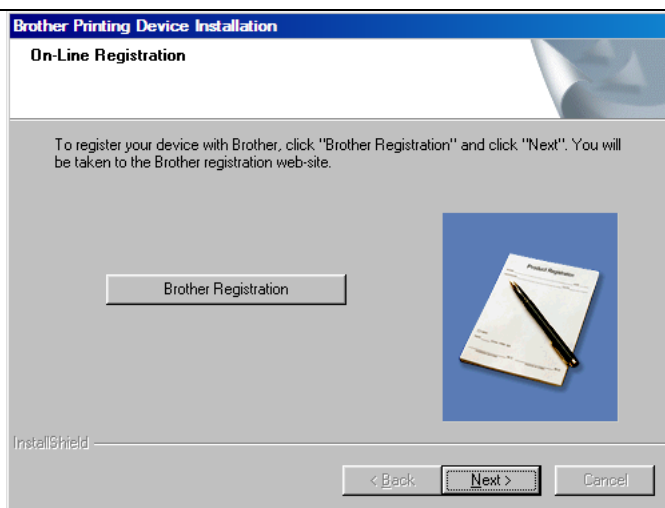
- If the printer is not listed, wait 30 seconds and click **Refresh**.
- If the printer is still not listed, press the **GO** button on the machine 3 times to print out printer settings. On the last page, check the Wireless Link Status and the IP address. If the Wireless Link Status is OK, verify the IP address is valid (e.g. 192.168.x.x or 10.10.x.x). If the IP Address is valid, click **Cancel** to stop the install and follow the solution "How do I add a printer driver on my Windows computer using the CD and the Add Printer Wizard?"
- Verify the IP Address listed for the printer is a valid number. If it lists APIPA, click **Refresh**.



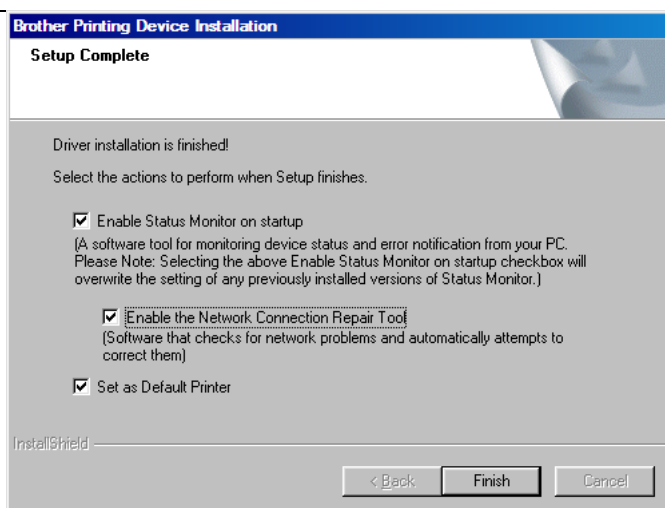
3. Click **Next** to continue.



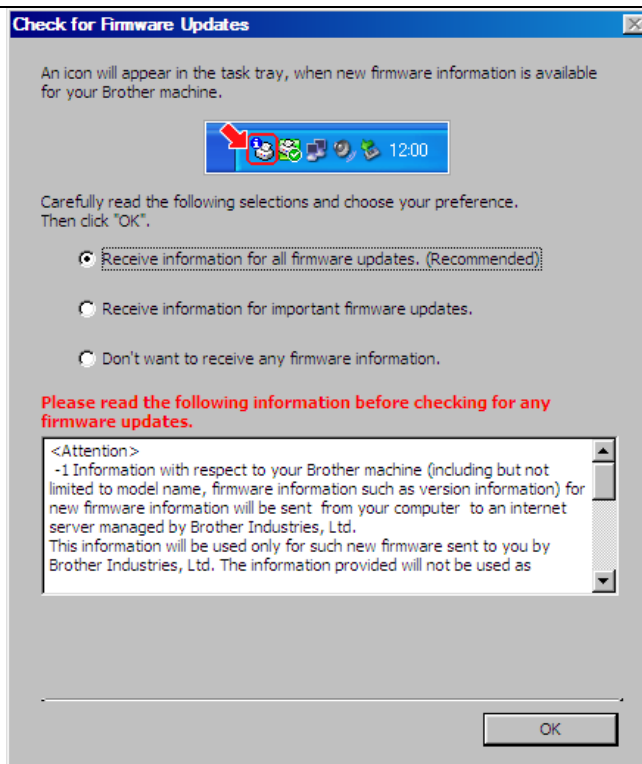
4. Online Registration. Click **Next** to continue.



5. Click the checkbox next to **Enable the Network Repair Tool** and click **Finish**.



6. Select the option you would prefer for receiving firmware update notices and click **OK**.



The driver installation is now complete.

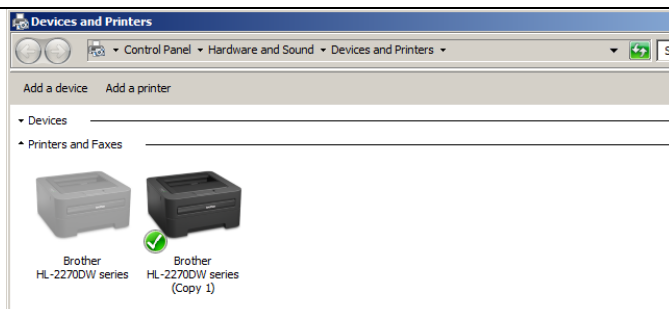
## **PART III: Remove Duplicate Driver And Print Test Page**

There is second copy of the driver in the Printers folder. It was installed when the USB cable was connected. It is no longer necessary so it is safe to remove it.

1. Click on **Start** and **Run**, type **Control Printers**, and then click **OK**. Or click **Windows/Start** and type **Control Printers** in the Start Search line then press **Enter**.

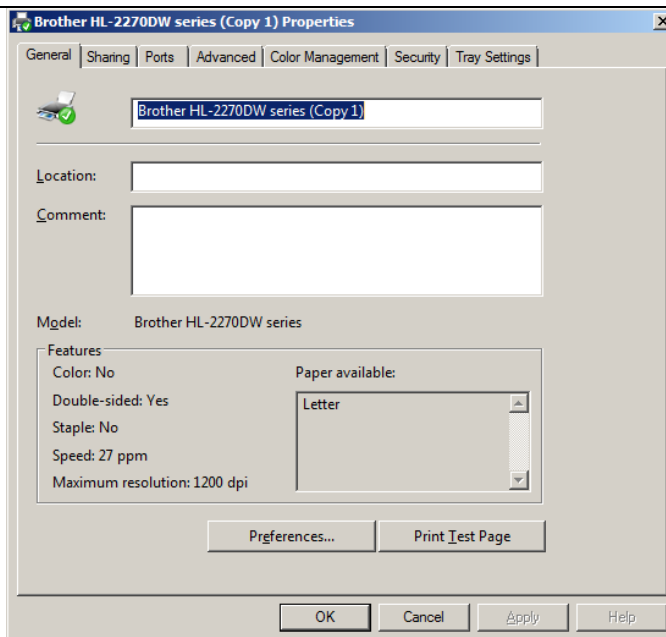


2. Right click on the Brother HL-2270DW Series (Copy 1) driver and select **Printer Properties**.

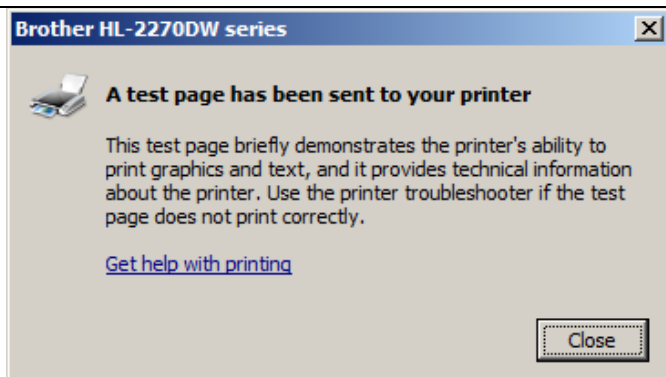




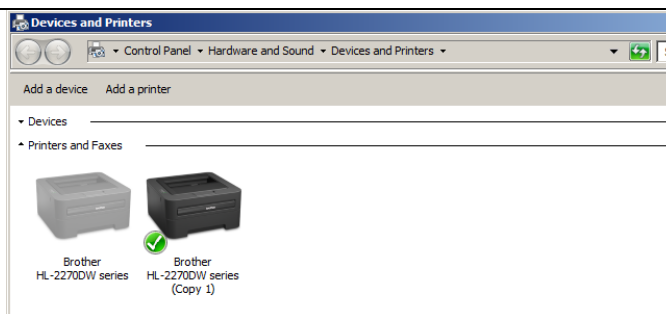
3. On the General tab, click **Print Test Page**.



4. Verify the Test Page printed and click **Close**.



5. Right click on the other copy of the printer driver named **Brother HL-2270DW series driver** and select **Remove Device** or **Delete** (May be different depending upon your operating system).



6. Select **Yes** to remove the device.

