

An ornamental card that brings your ideas to life

You can use this ornamental card as a photo frame to liven up any room, or as a gift card to make a special present even more meaningful. Just thinking about who to give the card to as you craft it is sure to bring to mind countless ways to decorate it.



Ornamental Card

Material

Outer dimensions (when finished): 5.94" x 11.18"

Paper – 13 kinds

Triangle and square welded first: 2.80" x 5.94"

Overlaid wavy square and square: 2.16" x 2.16"

Photo frame: 1.77" x 1.77"

Bands (flower – blue): 1.18" x 11.18"

Walls (green): 2.80" x 4.76"

Windows: 1.18" x 1.80"

Pompoms, tags, photo, glue, rhinestone

Decorate as desired.



The Auto Layout function can help save paper by automatically calculating the most efficient layout to use when you cut multiple pieces.

Built-in Pattern: BA-A033 x 4

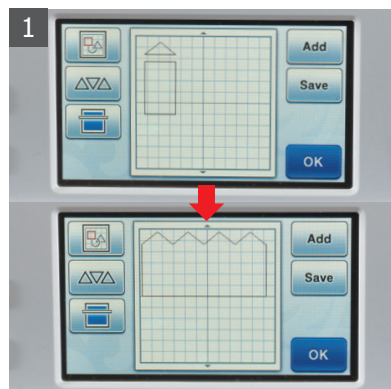
Function: Editing Functions (Auto Layout Functions)

- 1 Make the house-shaped base. Select built-in patterns for the triangle and rectangle and weld them together. Copy the produced shape 3 times, then lay out and weld the 3 pieces.

Built-in Patterns: BA-A022 x 4

BA-A033 x 4

Function: Editing Functions (Welding)



- 2 Cut 2 copies of the house-shaped base made in step 1 to make the front and back pieces. Fold the front and back pieces to give them creases.



- 3 Choose the built-in patterns for the remaining pieces, and cut the pieces. Use the built-in fonts and welding to cut the letters.

Built-in Patterns: BA-A001 x 2, BA-A008

BA-A012 x 4, BA-A033 x 4

BA-A110 x 2, BA-A136 x 8

AR-C006 x 4, AR-C021 x 2

AR-E001 x 2, AR-I019

BO-A014, FO-A002 x 2

Function: Editing Functions (Welding)



- 4 Use Background Scan to scan and cut the photo.

Built-in Pattern: BA-A001

Function: Background Scan



- 5 Lay out all the cut pieces, then glue them together.



- 6 Glue the front house-shaped piece to the back piece to complete the card. Turn it into a useful and stylish desktop item by adding photos or a stick-on note pad.

