

A card and letter set for people who like surprises

What jumps out from this envelope isn't just an invitation to a tea party, but also a group of fun and tasty-looking cards. Enhance the cards with your own original designs to create a fun surprise for the recipient.



Material

Outer dimensions (unfolded envelope): 11.03" x 11.03"

Outer dimensions (folded envelope): 5.51" x 5.51"

Paper – 12 kinds

Semicircles (for step 2): 2.36" x 5.13"

Teapot: 4.14" x 5.91"

Donut back piece (purple): diameter 3.25"

Ring-shaped clasp base (brown):

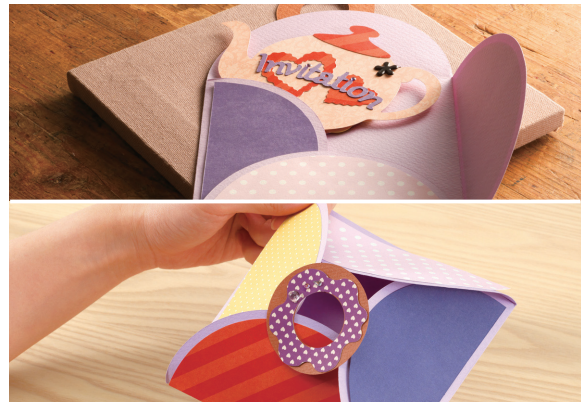
outer diameter 2.36", inner diameter 1.18"

Computer-printed text

Rhinestones, brad, glue

Decorate as desired.

For the donut and the ring-shaped clasp (heart-dotted), use the ornaments on back page.



Tip When fastening the letter cards together with the brad, position the attachment points as shown in the photo and use an awl or the like to punch the holes. Attach the clasp piece to it using a dab of adhesive at one spot, to serve as a fastener.

- 1** Make the envelope by welding together the built-in patterns of the semicircle and square.

Built-in Patterns: BA-A001

BA-A055 x 4

Function: Editing Functions (Welding)

- 2** Cut the other built-in pattern shapes. Create the "Tea Party" and "Cookies" text using the built-in fonts, then weld the letters together.

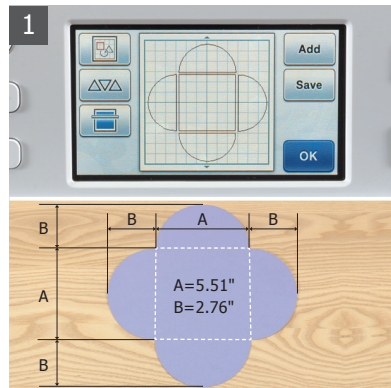
Built-in Patterns: BA-A045 x 3, BA-A050 x 4

BA-A055 x 4, BA-A068 x 2

AR-E018

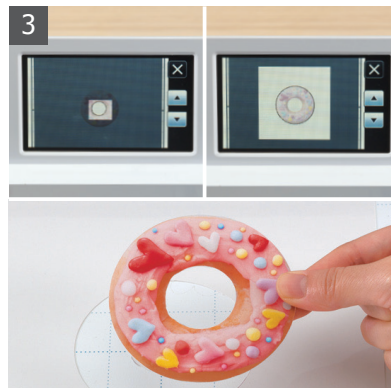
FO-A001, FO-A002

Function: Editing Functions (Welding)



- 3** Use Direct Cut to scan and cut a photo of the donut ornament on back page. First resize the scanning area to just the center hole and cut it, then resize to include the entire donut and cut the outer circumference. In the same way, use Direct Cut to cut the clasp ornament on back page.

Function: Direct Cut



- 4** Print the "Invitation" text and scan it using Scan to Cut Data, then cut it using the paper you want.

Function: Scan to Cut Data



- 5** Glue together the cut built-in pattern pieces to make the letter cards, then decorate them with rhinestones. Also glue the cut pieces to the envelope.



- 6** Fasten the letter cards together using a brass brad (split pin). Finish by folding the envelope closed with the letter cards inside. Brass brads are available in a variety of types, giving you a fun selection to choose from.



