

IMPORTANT: Make sure the USB interface cable is **NOT** connected to the machine. If you have already connected the cable, disconnect it.

1. Follow the instructions for [CD](#) or [Full Driver & Software Package](#) download.

CD

- a. Insert the Brother CD into your PC.

NOTE: If the Brother screen does not appear automatically, go to **My Computer** (Computer), double-click the CD-ROM icon, and then double-click **start.exe**.

- b. Go to [STEP 2](#).

Full Driver & Software Package download from the Brother website

- a. Browse to where you saved the downloaded file and double click on it.
- b. It will launch a zip self decompression window, click on **Decompress(X)**.
- c. You will get a message stating: The decompression process was successful. Click **OK**. Make a note of the folder that was created.
- d. Double click on the **Install** folder that was created during the decompression.
- e. Double click on your **model** => **Setup.exe**.
- f. Choose your Country/Language and click **OK**.

NOTE: US English speakers, should select **USA**, not **ENG**.

- g. Go to [STEP 5](#).

2. Select your model.



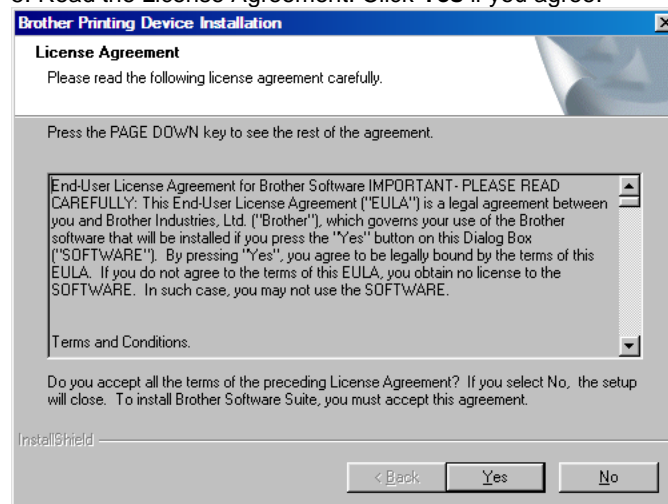
3. Select Language: English.



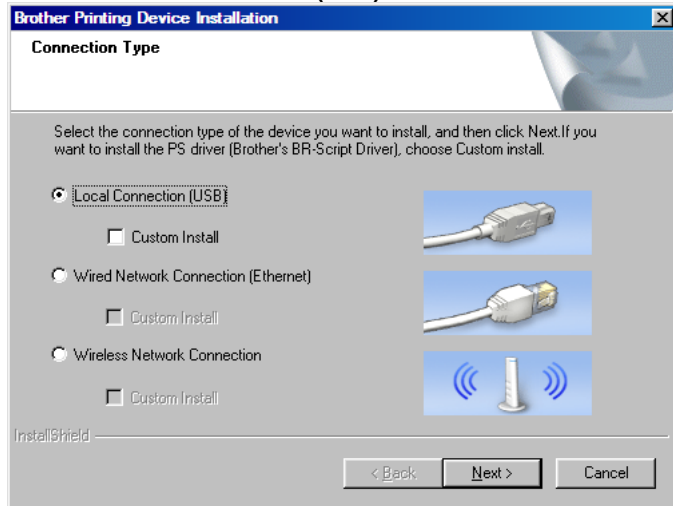
4. Click Install Printer Driver (U.S.A./Canada/Latin America).



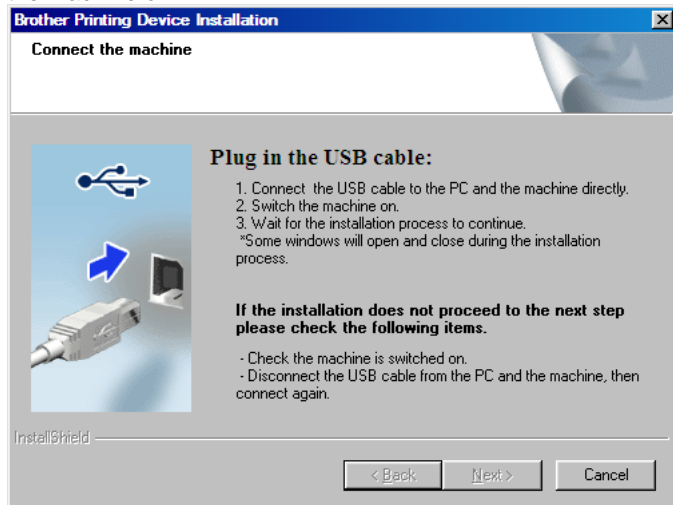
5. Read the License Agreement: Click Yes if you agree.



6. Select **Local Connection (USB)**. Click **Next**.

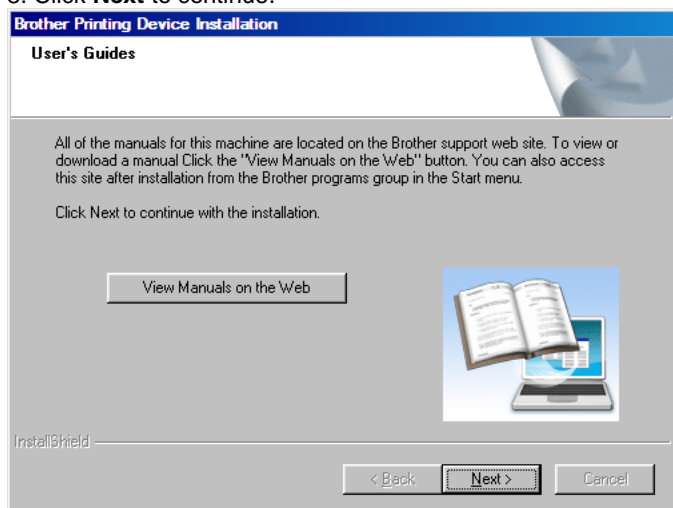


7. Connect the USB cable to your PC and the machine. Turn the machine on.

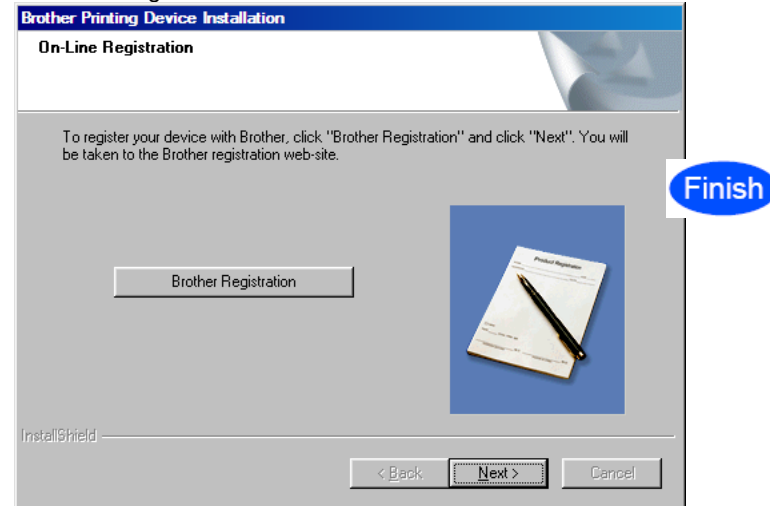


NOTE: This process may take several minutes to complete.

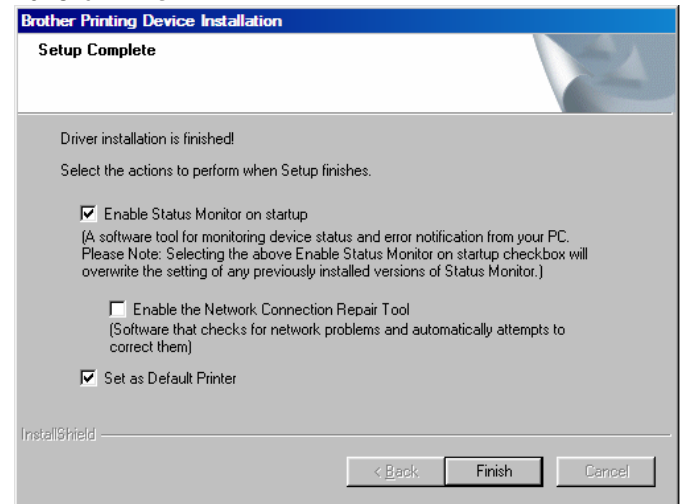
8. Click **Next** to continue.



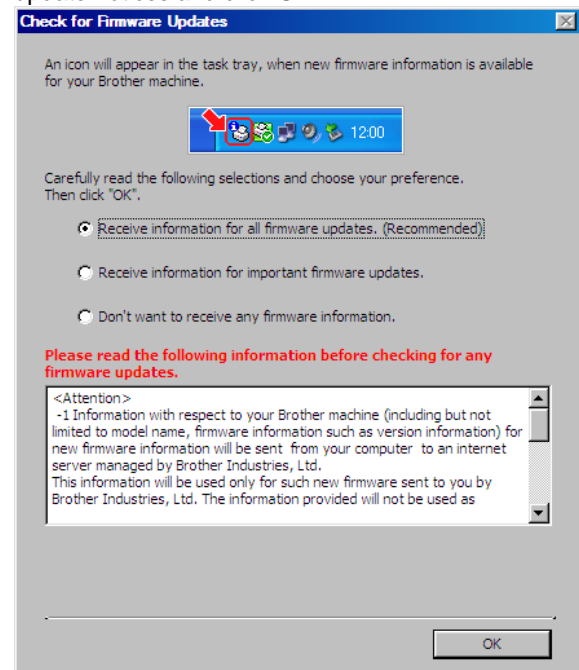
9. Online Registration. Click **Next** to continue.



10. Click **Finish**.



11. Select the option you would prefer for receiving firmware update notices and click **OK**.



The installation is now complete.