

How do I configure the wireless printer without a network cable and install the printer driver in Macintosh OS X®?

NOTE: For successful wireless setup, you MUST know your network security settings.

STEP I: Gather the wireless network settings of your wireless access point or wireless router

The network settings information for your network can be found on the network configuration sheet of your wireless access point or wireless router. Please contact the manufacturer of your wireless access point or wireless router or refer to the user's guide for your wireless access point or wireless router for instructions on printing a network configuration sheet.

This information includes:

- A. SSID (Service Set ID or Network Name). Your access point or router is identified by an SSID or network name.
- B. Encryption Method required by your access point or router. For example, Open System, Shared Key, WPA-PSK, LEAP, etc.
- C. If you are using WEP, you will need the WEP KEY (in HEX key format). For example, a 64-bit key uses 10 digits of hexadecimal data: i.e. 71f2234aba, while a 128-bit key uses 26 digits of hexadecimal data: i.e. 71f2234ab56cd709e5412aa3ba.
- D. If you are using WPA-PSK (TKIP), you will need the PASSPHRASE. For routers that use a Pre-Shared Key (PSK), the PASSPHRASE is more than 7 characters and less than 64 characters in length.
- E. If you are using MAC (Media Access Control) Filtering/MAC Address Access Control on your router, add the printer's MAC Address to the table. The MAC Address is available on the Wireless Settings Page. Make sure the Node Type is Brother NC-7600w.

NOTE: If you do not have this network settings information, or cannot find this information, you cannot successfully complete the wireless setup for this printer. Contact the manufacturer of your wireless access point or wireless router for this network information.

STEP II: Perform a factory reset on the printer and printer network card

1. Check that the front cover of the printer is closed. Turn OFF the power switch on the right side of the printer.
2. Press and hold the GO button, and keep holding it down, as you turn on the power switch. The GO button is located on the top left side of the printer below the LEDs.
3. Keep the GO button pressed down until all the LEDs light up and the Status LED turns off. Release the GO button. Make sure that all the LEDs turn off.

4. Press the GO button 10 times. The Status LED will flash while the printer is reset. After the printer is reset the Status LED will be lit.

STEP III: Enable the Wireless Network Card

With the printer power turned on and the printer Ready, press and hold down the GO button for about 15 seconds. Release the GO button when the printer prints a Network Configuration page.

NOTE: On the Network Configuration page, the text to the right of IEEE 802.11b/g in the Node Type section will indicate that the Wireless network card is active or inactive. Active means that the wireless setting is enabled and Inactive means that the wireless setting is disabled. If this Node Type section shows Inactive, repeat step III.

```
<<NETWORK CONFIGURATION>>
<Node Type> Brother NC-7600w, IEEE 802.11b/g (Active)
<Node Firmware Ver.> Firmware Ver.:1.01 (08.12.12)
<Mac Address> 00-22-48-16-24-96
<Node name> BRW00234EBC2A96
```

STEP IV: Print out the Printer Settings pages to determine the IP Address

1. Make sure the printer is powered on and the front cover is closed. The printer should be in Ready mode with the Status light on steady. Wait approximately 1 minute for the printer to acquire an IP address.
2. Press the GO button 3 times to print the Printer Settings page. 3 pages should print out. If 4 pages print out, please repeat Step II, Step III, and Step IV, to reset the printer and printer network card again, enable the wireless card, and print a new Printer Settings.
3. Verify the IP Address of the printer is a 169.254.x.x number (Figure 1) and that the Comm. Mode is Ad-hoc and the Name (SSID) is SETUP (Figure 2).

```

PRINTER SETTINGS(3/3)
HL-5370DW series SER.NO:A9J116933

<<NETWORK CONFIGURATION>>
<Node Type> Brother HL-5370DW, IEEE 802.11b/g (Active)
<Node Firmware Ver.> Firmware Ver.1.11 (08.12.12)
<MAC Address> CS-234e-bc-2a-96
<Node name>
<Active services>
BRN001BA9047C21
BRN001P1
TEXT_PT
FOGTSCHIPP_F1
Fog_P1
BRN001BA9047C21_AT

<Protocol>
TCP/IP Enabled IPv6 Disabled
NetBIOS/IP Enabled ARP/PA Enabled Enabled
LegacyAuth Enabled SMD Enabled Enabled
Telnet Enabled SMD Enabled Enabled
LFD Enabled Raw Port Enabled Enabled
IPF Enabled WebServices Enabled Enabled
PCP/SMTP Enabled FTP Enabled Enabled
TFTP Enabled MDM Enabled Enabled
L2AMP Enabled L2D Disabled

<IP Settings>
IP Address 169.254.195.255 (via ARP/PA)
Subnet Mask 255.255.0.0
IP Gateway 0.0.0.0
Host Name
Host Time 2
IP Filter Disabled

GW Timeout (sec) 5
DNS Address Config AUTO
Primary DNS Server 0.0.0.0
Secondary DNS Server 0.0.0.0

<NetBIOS Name> BRN00234EBC2A96
<WINS Address Config> AUTO
<Primary WINS Server> 0.0.0.0
<Secondary WINS Server> 0.0.0.0

<Printer Mail Address> brn001ba9047c21@example.com
<SMTP Server> 0.0.0.0
<SMTP Port> 25
<POP Server> 0.0.0.0
<POP3 Port> 110

<DNS Service Name> Brother HL-5370DW series
<WebServices Name> Brother HL-5370DW series (00234ebc2a96)
<Certificate> None
Status
<SNMP Settings>
Communication Mode v1/v2c(RK)

<Comm. Mode> Ad-hoc
<Name (SSID)> SETUP
<Authentication Mode> Open System
<Encryption Mode> NONE
<Wireless Link Status> Link OK, 11b (1Mbps), Rx
Link OK, 11b (1Mbps), Tx

<Network Statistics>
Packets Received 5
Bytes Received 1427
Packets Transmitted 12
Bytes Transmitted 16632

<Wireless Statistics>
RX Frames Received OK 2
RX Frames Error 0
TX Frames Transmitted OK 42
TX Frames Error 0

```

Figure 1

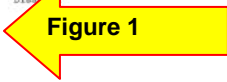
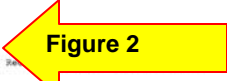


Figure 2



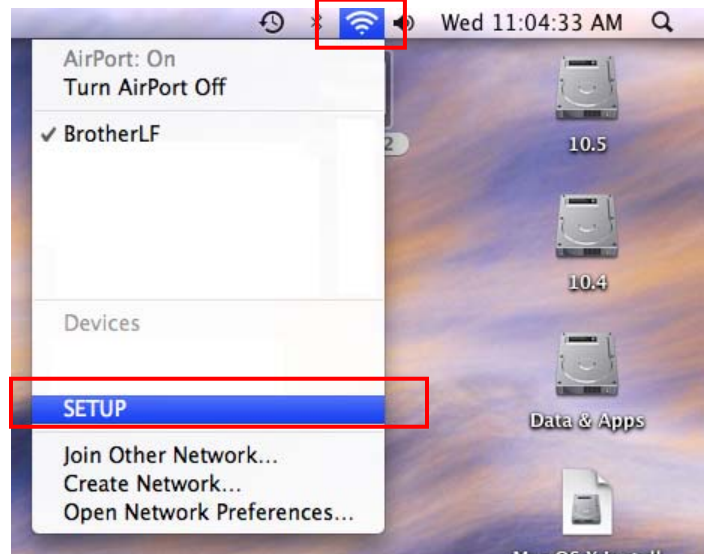
STEP V: Communicate to the printer WITHOUT a network cable and configure the wireless settings

To communicate with the printer in Ad-hoc mode, the wireless computer needs to join the printer's SETUP network.

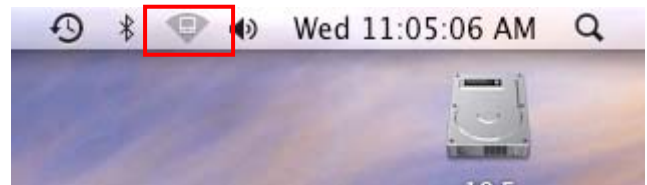
NOTE: If you are using a third party utility to manage your wireless connections, contact the manufacturer for assistance with the following steps.

If you are using the Macintosh operating system to manage your wireless connections, use the following steps.

In the Airport Wireless Utility, connect to SETUP.



The wireless icon will turn gray.



Check the IP Address of your computer.

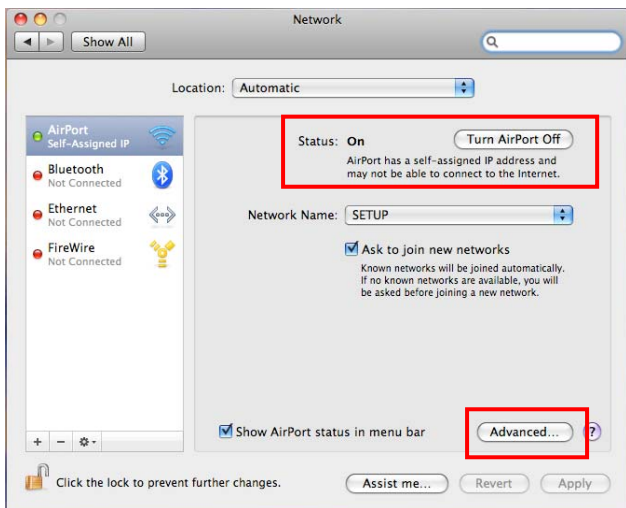
To determine the computer's IP address:

Mac OS 10.5

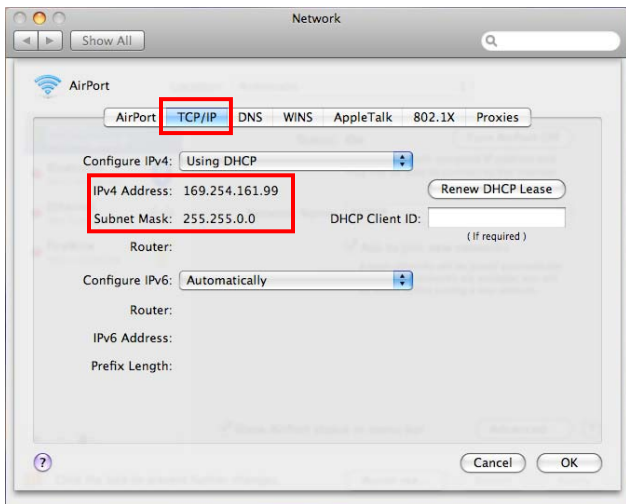
- Select System Preferences from under the blue Apple in the top left corner.
- Select Network.



- Click on Advanced. The Airport connection will indicate that it has a self-assigned IP Address.



- d. Click on the TCP/IP tab. Locate the IP Address. This number should be similar to the IP Address of the printer. The printer's IP Address can be found on the Settings Pages you printed out previously. The first two sets of numbers should be the same.
 For example:
 Computer IP Address is: 169.254.x.x
 Printer IP Address is: 169.254.x.x

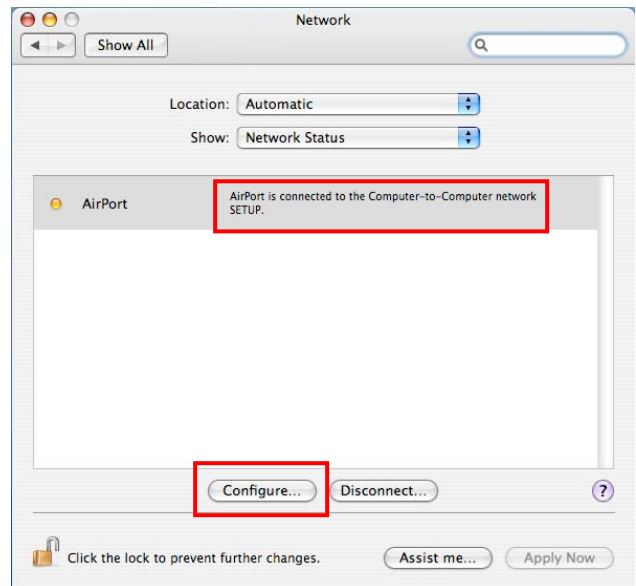


Mac OS 10.4

- Select System Preferences from under the blue Apple in the top left corner.
- Select Network.

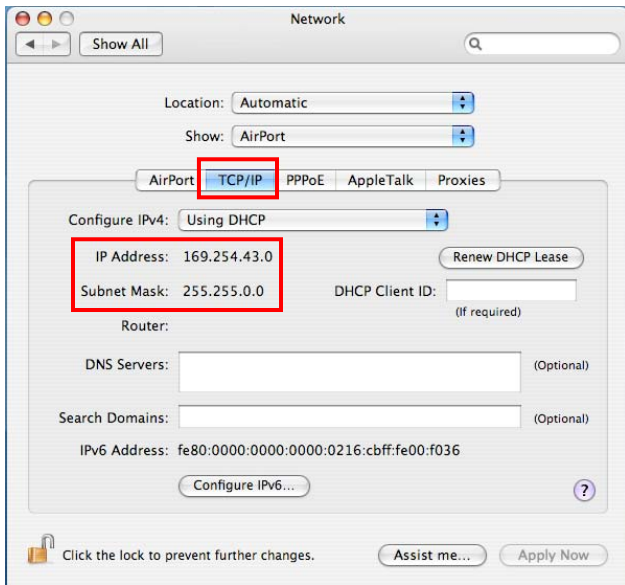


- c. Click on Configure. The Airport connection will indicate that it is connected to the Computer-to-Computer network SETUP.



- d. Click on the TCP/IP tab. Locate the IP Address line. This number should be similar to the IP Address of the printer. The printer's IP Address can be found on the Settings Pages you printed out previously. The first two sets of numbers should be the same.
 For example:
 Computer IP Address is: 169.254.x.x
 Printer IP Address is: 169.254.x.x

NOTE: If these numbers are not similar (not in the same range), return to Step II to perform a factory reset on the printer and printer network card. After the network card is reset, wait one minute, and then press the GO button 3 times to print the settings pages. Review the last page for the printer IP address again. If the printer IP address is not similar to the computer IP address, do NOT proceed with wireless setup. Call Brother Customer Service at 1-877-BROTHER (1-877-276-8437) for assistance.

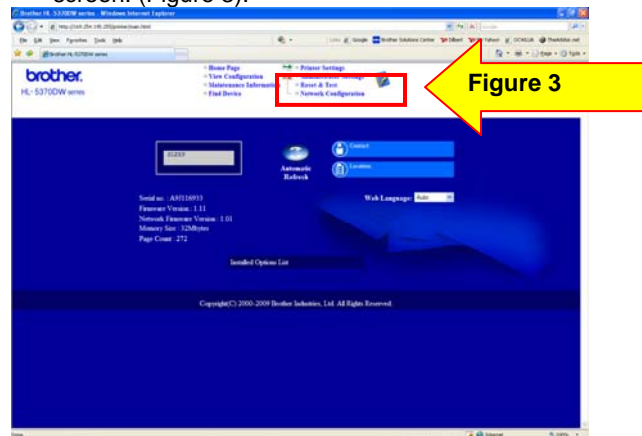


Configure the Wireless Network Card

1. If the IP Address of the computer and the IP Address of the printer are in the same range, open a web browser.
2. Enter the IP Address of the printer into the web browser screen and press ENTER. The Brother Web Management screen will appear.



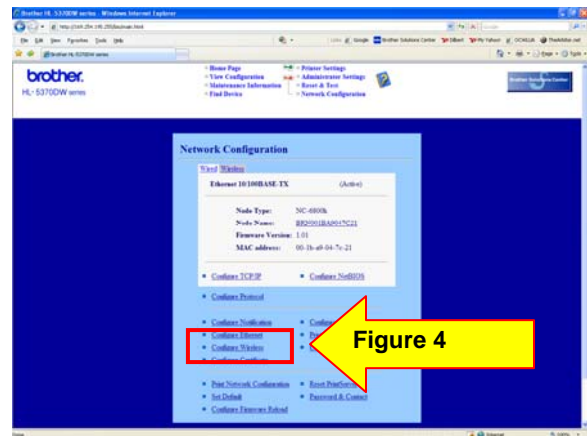
3. Click on Network Configuration near the top of the screen. (Figure 3).



A login screen will appear. Enter the following: Username: admin Password: access. Then click OK.

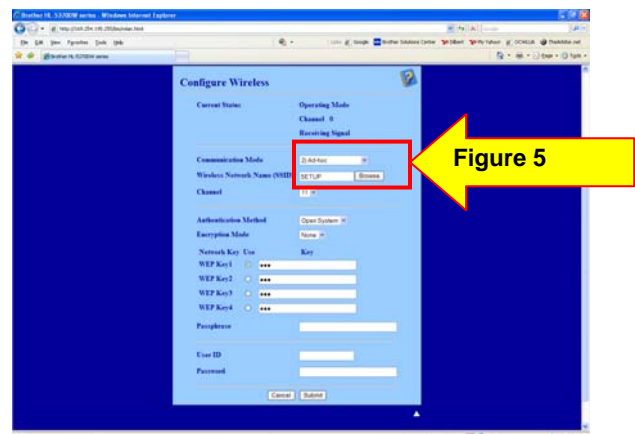


4. Click Configure Wireless (Figure 4).

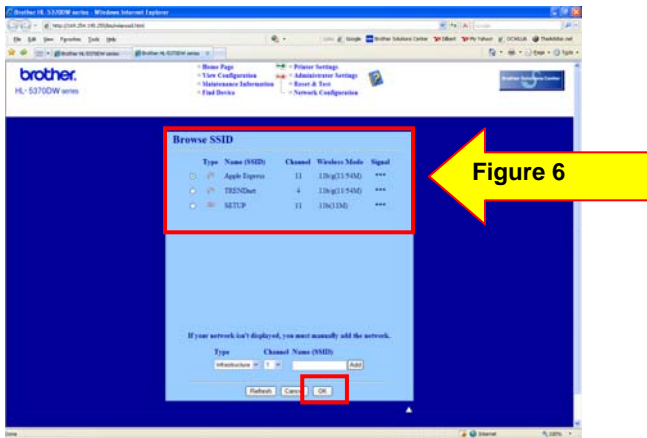


5. Change the Communication Mode to Infrastructure (Figure 5).

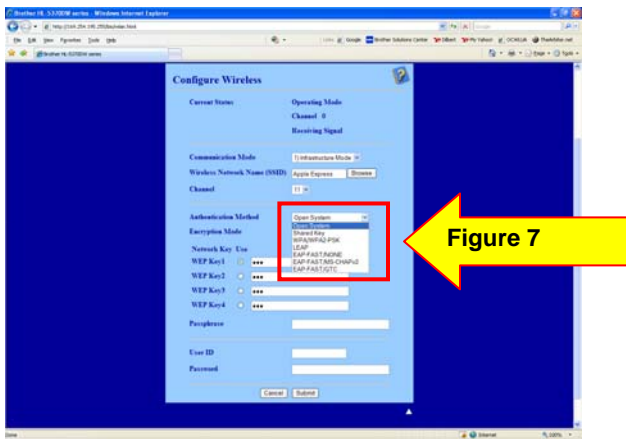
6. Click BROWSE next to the Wireless Network Name (SSID) (Figure 5). For the SSID, refer to the network settings information gathered in Step 1.



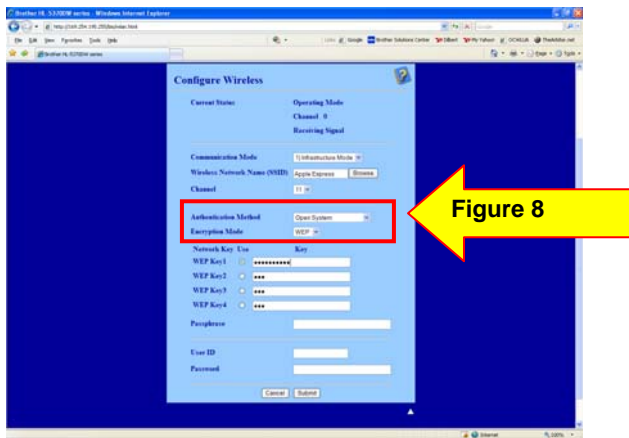
- Select the appropriate Name (SSID) from the list and click OK (Figure 6). Refer to the network settings information gathered in Step 1.



- Leave the Channel setting as is.
- Select the appropriate Authentication Method from the drop down list (Figure 7). Refer to the network settings information gathered in Step 1.

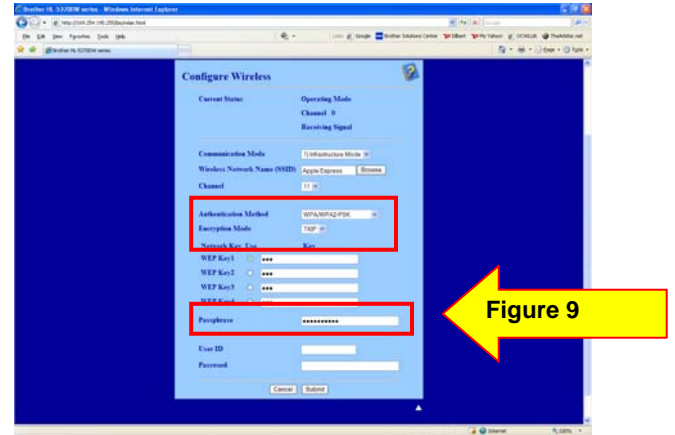


- Select the appropriate Encryption Method (Figure 8). Refer to the network settings information gathered in Step 1.

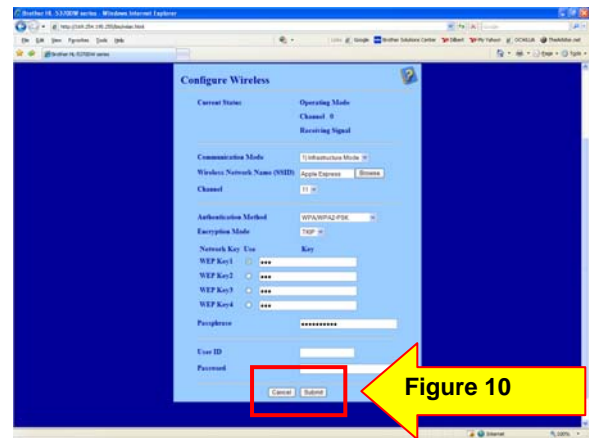


NOTE: If WEP is selected as the Encryption Method, enter the hex code for the WEP Key 1. There is no need to enter the Passphrase for WEP Encryption.

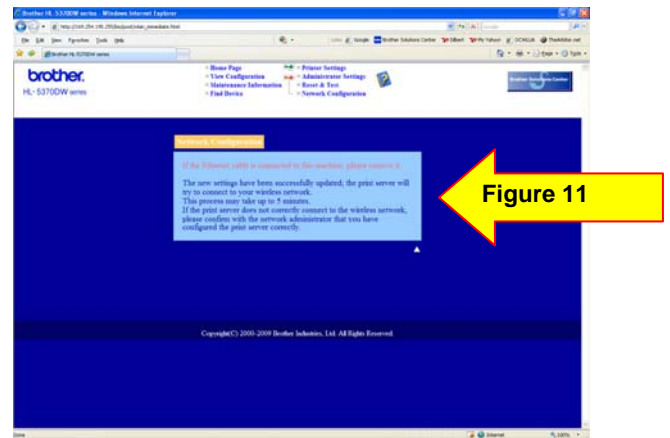
NOTE: If using an Authentication Method other than Open or Shared is selected, then a Passphrase must be entered on the Passphrase line (Figure 9).



- Click Submit to update the printer with your wireless settings (Figure 10).



- The computer should display a screen indicating the settings have been updated successfully (Figure 11).



13. The Wireless Network Card on the printer is now Active on the network.
14. Switch your computer BACK to your wireless access point or wireless router, rather than the SETUP network. If you need assistance doing this, please refer back to the start of Step V.
15. Verify the printer is now attached to the wireless access point or wireless router:
 - a. Wait approximately one minute.
 - b. Press the GO button 3 times to print the settings pages.
 - c. Look at the last page printed. Confirm that the IP address on that page is assigned via DHCP (Figure 12).
 - d. Confirm the Comm. Mode is set to Infrastructure, the Name (SSID) matches your access point or router and the Wireless Link Status is Link OK (Figure 13).

NOTE: If the IP Address is still 0.0.0.0, wait another minute and print out the settings pages again. If the IP Address is still 0.0.0.0, please reset the router by powering it off, then back on. Also, turn the printer off, then back on. Print out the Network Settings page again and verify the settings. If the IP Address is still a 0.0.0.0 number, please verify your security information and go to STEP II.

If the IP Address is a 169.254.x.x number and the Wireless Link Status in LINK OK, please check your router for MAC filtering. If MAC filtering is enabled, please enter the MAC address to the list. If MAC filtering is not enable, please reset the router by powering it off, then back on. Also, turn the printer off, then back on. Print out the Network Settings page again and verify the settings. If the IP Address is still a 169.254.x.x number, please verify your security information and go to STEP II.

If the IP Address is a 169.254.x.x number and the Wireless Link Status in FAILED TO ASSOCIATE, please reset the router by powering it off, then back on. Also, turn the printer off, then back on. Print out the Network Settings page again and verify the settings. If the IP Address is still a 169.254.x.x number, please verify your security information and go to STEP II.

PRINTER SETTINGS(4/4)

HL-5370DW series SER.NO:AJ3116933

```
<<NETWORK CONFIGURATION>>
<Node Type> Brother HL-5370DW, IEEE 802.11b/g (Active)
<Node Firmware Ver.> Firmware Ver:1.01 (08.12.12)
<MAC Address> 00-23-4e-bc-2a-96
<Node name> HW0023480C2A96
<Active services>
  BINARY_P1
  TEXT_FT
  POSTSCRIPT_P1
  PCL_P1
  HW001BA9047C21_AT
<Protocols>
  TCP/IP Enabled IPv6 Disabled
  NetBIOS/IP Enabled AFIPA Disabled
  WpaAuth Enabled WebBaseManagement Enabled
  Tlsnet Enabled SNMP Enabled
  LFD Enabled Raw Port Enabled
  IPP Enabled WebServices Enabled
  POP3/SMTP Enabled FTP Enabled
  TFTP Enabled HTTP Enabled
  L2MP Enabled L2MP Disabled
```

```
<IP Settings>
IP Address 205.134.46.50 (via DHCP)
Subnet Mask 255.255.255.0
IP Gateway 205.134.46.254
Boot Method AUTO
Boot Times 3
IP Filter Disabled
```

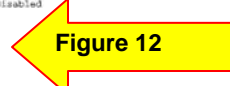


Figure 12

```
<DNS Address Config>
DNS Address Config AUTO
Primary DNS Server 205.134.46.230
Secondary DNS Server 205.134.32.133
<NetBIOS Name> HW0023480C2A96
<WINS Address Config>
<Primary WINS Server> AUTO
<Secondary WINS Server> 205.134.32.132
<Printer Mail Address> brn001ba9047c21@example.com
<SMTP Server> 0.0.0.0
<SMTP Port> 25
<POP3 Server> 0.0.0.0
<POP3 Port> 110
<DNS Service Name> Brother HL-5370DW series
<WebServices Name> Brother HL-5370DW series [0023480c2a96]
<Certificate>
Status None
<SNMP Settings>
Communication Mode v1/v2c(SNMP)
```

```
<Comm. Mode> Infrastructure
<Name(SSID)> BrotherIP
<Authentication Mode> WPA/WPA2-PSK
<Encryption Mode> TKIP
<Wireless Link Status> Link OK, 11g(48Mbps), Receiving Signal = 3, Operating Channel = 11, 0
<TX Power Code>
```

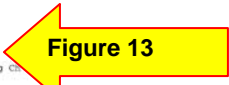


Figure 13

```
<Network Statistics>
Packets Received 63
Bytes Received 13048
Packets Transmitted 41
Bytes Transmitted 11602
<Wireless Statistics>
RX Frames Received OK 59
RX Frames Error 0
TX Frames Transmitted OK 46
TX Frames Error 0
```

The printer is now configured and is operating on your network.

Driver Installation

If you have the Brother software CD, please insert it and follow the directions to install the DRIVER ONLY.

If you do not have the Brother software CD, please click one of the links below to download and install the driver.

[Macintosh OS X 10.5: Click here to download and install the driver](#)

Or copy the link below and paste into your browser window.
http://welcome.solutions.brother.com/bsc/public/us/us/en/dl/download_index.html?reg=us&c=us&lang=en&prod=hl5370dw_us&type2=1&os=81&flang=English&dclid=

[Macintosh OS X 10.4: Click here to download and install the driver](#)

Or copy the link below and paste into your browser window.
http://welcome.solutions.brother.com/bsc/public/us/us/en/dl/download_index.html?reg=us&c=us&lang=en&prod=hl5370dw_us&type2=1&os=26&flang=English&dclid=