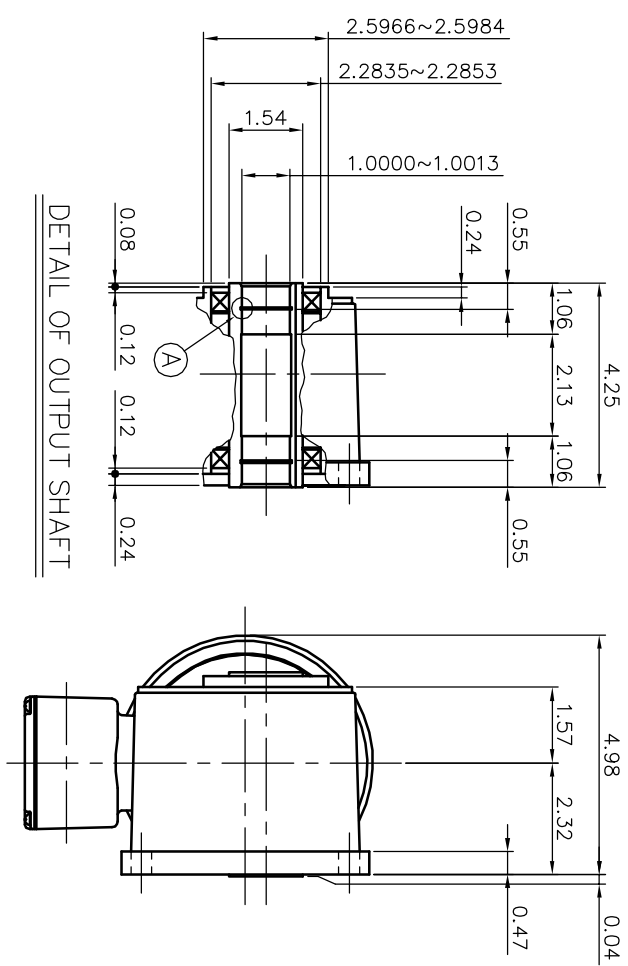
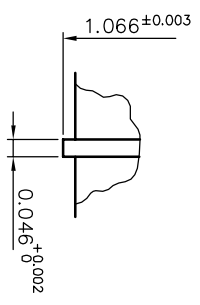
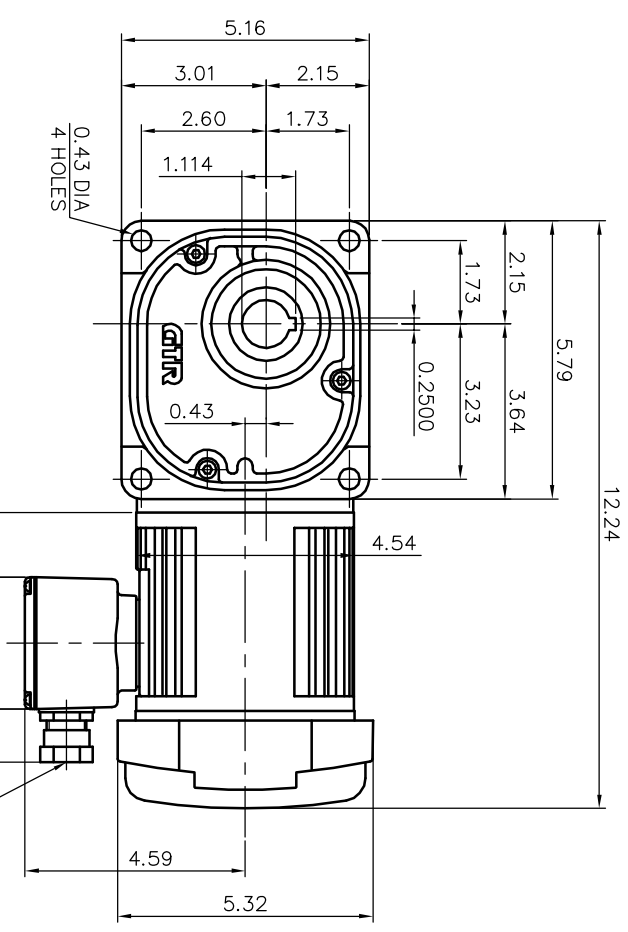


REVISIONS



DETAIL OF OUTPUT SHAFT



DETAIL OF : A

NOTE: THIS MOTOR IS AFFIXED WITH CE MARKING.  
 NOTE: BE SURE TO USE THE THERMAL RELAY WITH CE MARKING.

MOTOR SPECIFICATION

TYPE	1-PHASE INDUCTION MOTOR
FORM	TOTALLY ENCLOSED FAN COOLED DS-105
OUTPUT	1/8 HP
VOLTAGE	115 V
FREQ	60 HZ
POLES	4
RATING CAPACITOR	CONT. 24 μF (220V)

REDUCER SPECIFICATION

TYPE	GTR
FORM	25
RATIO	1/10 1/12.5 1/15 1/20 1/25 1/30 1/40 1/50 1/60 1/80 1/100 1/120 1/160 1/200 1/240
LUBRICATION	GREASE

NOTE: THE GROUND LEAD SHOULD BE LONGER THAN THE SUPPLY LEAD FOR THE MOTOR.  
 NOTE: AN AUTO-RESET THERMAL PROTECTOR IS ATTACHED IN THE MOTOR.  
 (THE DEVICE WILL TRIP AT 120+/-5 DEG CENT.)  
 NOTE: INSULATION : CLASS A  
 NOTE: THIS MOTOR IS UL CERTIFIED MODEL. (UL1004, UL2111)  
 NOTE: UL-LISTED MODEL NAME: BFSM25-010~240SH1A

TITLE BFSM25-010~240SH1A  
 DIMENSION OF MODEL

APPROVE	K. Nagasaka	SCALE	1/4	UNIT	in	DATE	2008.02.12
CHECK	H. Ishikawa						
DESIGN	I. Goto						
DRAWING NO.							
USER							
NOTICE							
NISSEI CORPORATION							