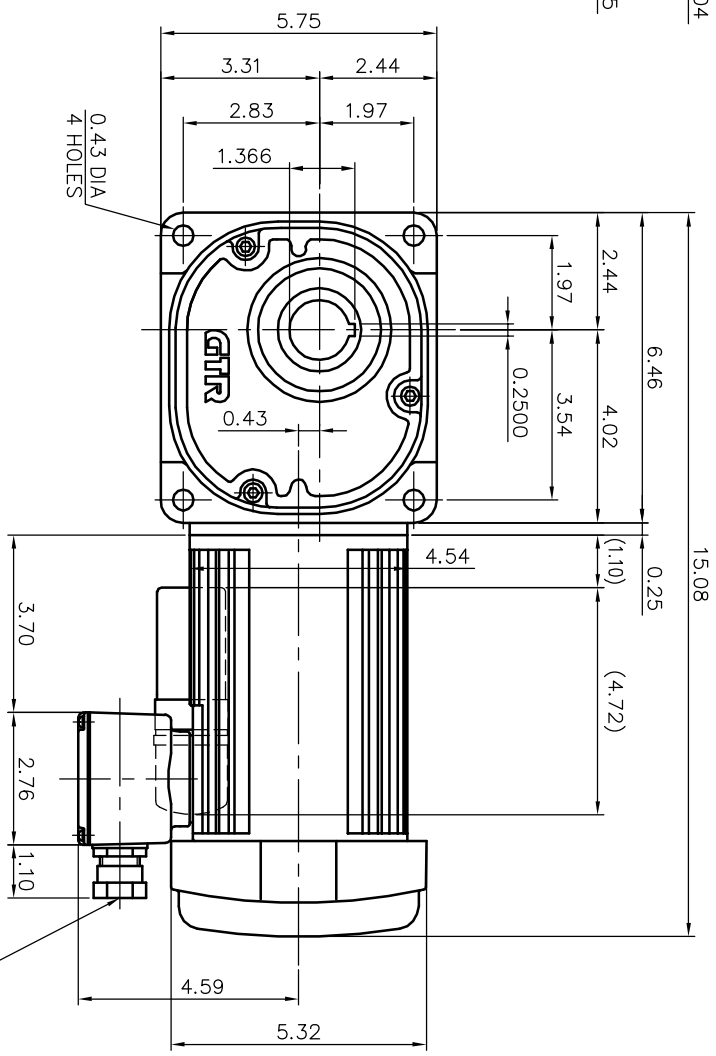
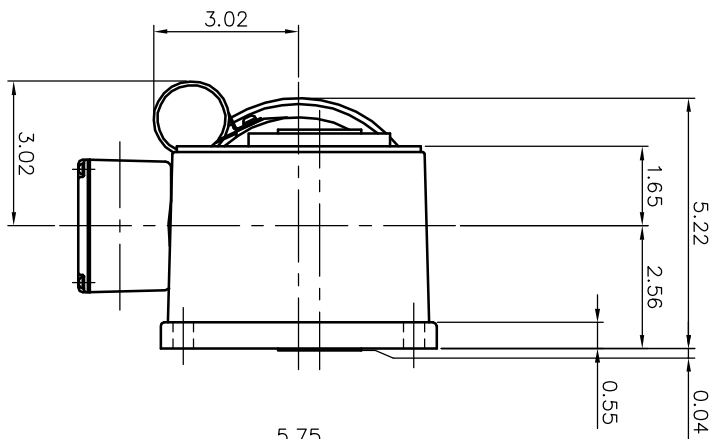
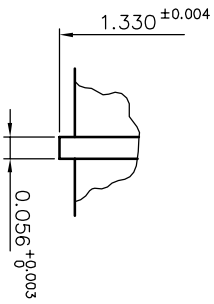
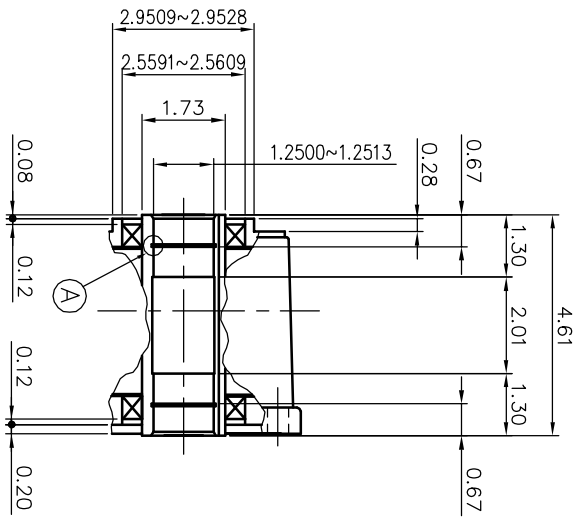


REVISIONS



DETAIL OF : A

DETAIL OF OUTPUT SHAFT

MOTOR SPECIFICATION

TYPE	1-PHASE INDUCTION MOTOR
FORM	TOTALLY ENCLOSED FAN COOLED
OUT PUT	1/4 HP
VOLTAGE	115 V
FREQ	50/60 HZ
POLES	4
RATING	CONT.

REDUCER SPECIFICATION

TYPE	GTR
FORM	30
RATIO	1/5 1/7.5 1/10 1/12.5 1/15 1/20 1/25 1/30 1/40 1/50 1/60 1/80 1/100 1/120 1/160
LUBRICATION	GREASE

NOTE: THIS MOTOR IS AFFIXED WITH CE MARKING.
 NOTE: BE SURE TO USE THE THERMAL RELAY WITH CE MARKING.
 NOTE: THE GROUND LEAD SHOULD BE LONGER THAN THE SUPPLY LEAD FOR THE MOTOR.
 NOTE: INSULATION : CLASS A
 NOTE: THIS MOTOR IS UL CERTIFIED MODEL.(UL1004)
 NOTE: UL-LISTED MODEL NAME: BFSM30-005~240SK1A

TITLE
 BFSM30-005~240SK1A
 DIMENSION OF MODEL

DRAWING NO.

USER

NOTICE

APPROVE	K. Nagasaka	SCALE	1/4	UNIT	in	DATE	2008.02.12
CHECK	H. Ishikawa						
DESIGN	I. Goto	NISSEI CORPORATION					