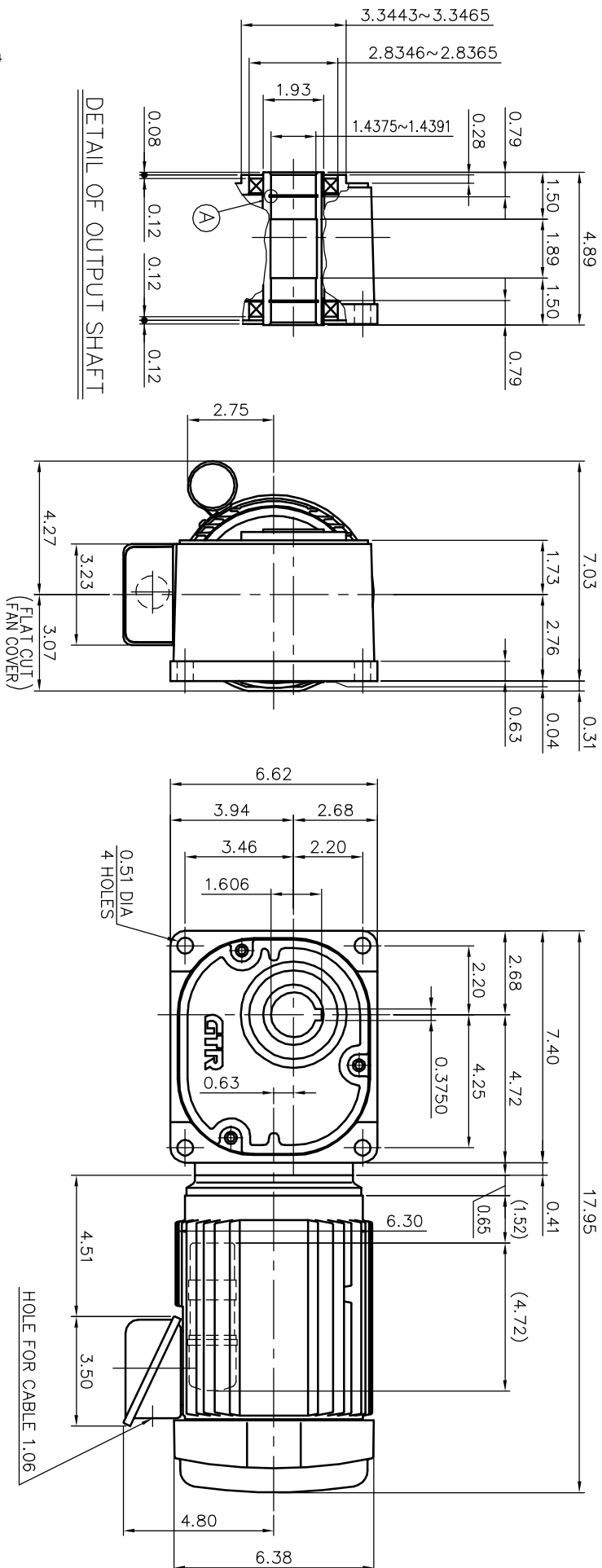
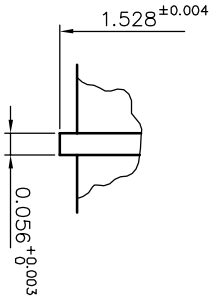


REVISIONS



DETAIL OF OUTPUT SHAFT



DETAIL OF : A

MOTOR SPECIFICATION

TYPE	1-PHASE INDUCTION MOTOR
FORM	TOTALLY ENCLOSED FAN COOLED
OUTPUT	1/2 HP
VOLTAGE	115 V
FREQ	50/60 HZ
POLES	4
RATING	CONT.

REDUCER SPECIFICATION

TYPE	GTR
FORM	35
RATIO	1/5 1/7.5 1/10 1/12.5 1/15 1/20 1/25 1/30 1/40 1/50 1/60 1/80 1/100 1/120 1/160
LUBRICATION	GREASE

HOLE FOR CABLE 1.06

NOTE: THIS MOTOR IS AFFIXED WITH CE MARKING;
 NOTE: BE SURE TO USE THE THERMAL RELAY WITH CE MARKING.
 NOTE: THE GROUND LEAD SHOULD BE LONGER THAN THE SUPPLY LEAD FOR THE MOTOR.
 NOTE: INSULATION : CLASS A
 NOTE: THIS MOTOR IS UL CERTIFIED MODEL.(UL1004)
 NOTE: UL-LISTED MODEL NAME: BFSM35-005~240SL1S

TITLE BFSM35-005~240SL1S
 DIMENSION OF MODEL

DRAWING NO.

USER

NOTICE

APPROVE	K.Nagasaki	SCALE	1/5	UNIT	in	DATE	2008.02.12
CHECK	H.Ishikawa						
DESIGN	I.Goto	NISSEI CORPORATION					