



## **PARTS REFERENCE LIST**

**MODEL: ST-5**

MECHANISMS & ELECTRONICS





**PARTS REFERENCE LIST**

**MODEL: ST-5**

© Copyright Brother 1995

All rights reserved.

No part of this publication may be reproduced in any form  
or by any means without permission in writing from the  
publisher.

Specifications are subject to change without prior notice.

## NOTES FOR USING THIS PARTS REFERENCE LIST

1. In the case of ordering parts, it needs mentioning the following items:

- (1) Code
- (2) Q'ty
- (3) Description
- (4) Revision No. (for a kind of printed circuit boards)

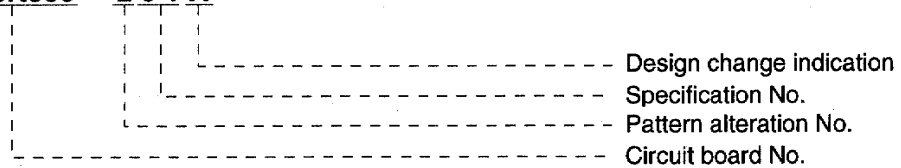
Note: No orders without Parts Code or Tool No. can be accepted.

[ Example ]

	(1)	(2)	(3)	
REF.NO.	CODE	Q'TY	DESCRIPTION	REMARKS

(4) Revision No.: marked on a printed circuit board.

**B48K056 - 2 0 1 A**



2. Design-changed parts;

If the parts are changed, any one of the following symbols is indicated in the REMARKS column.

- #A : compatible between old and new
- #B : replaceable from old to new
- #D : incompatible
- # : newly established

3. The original of this list was made based on the information available in July 1995.

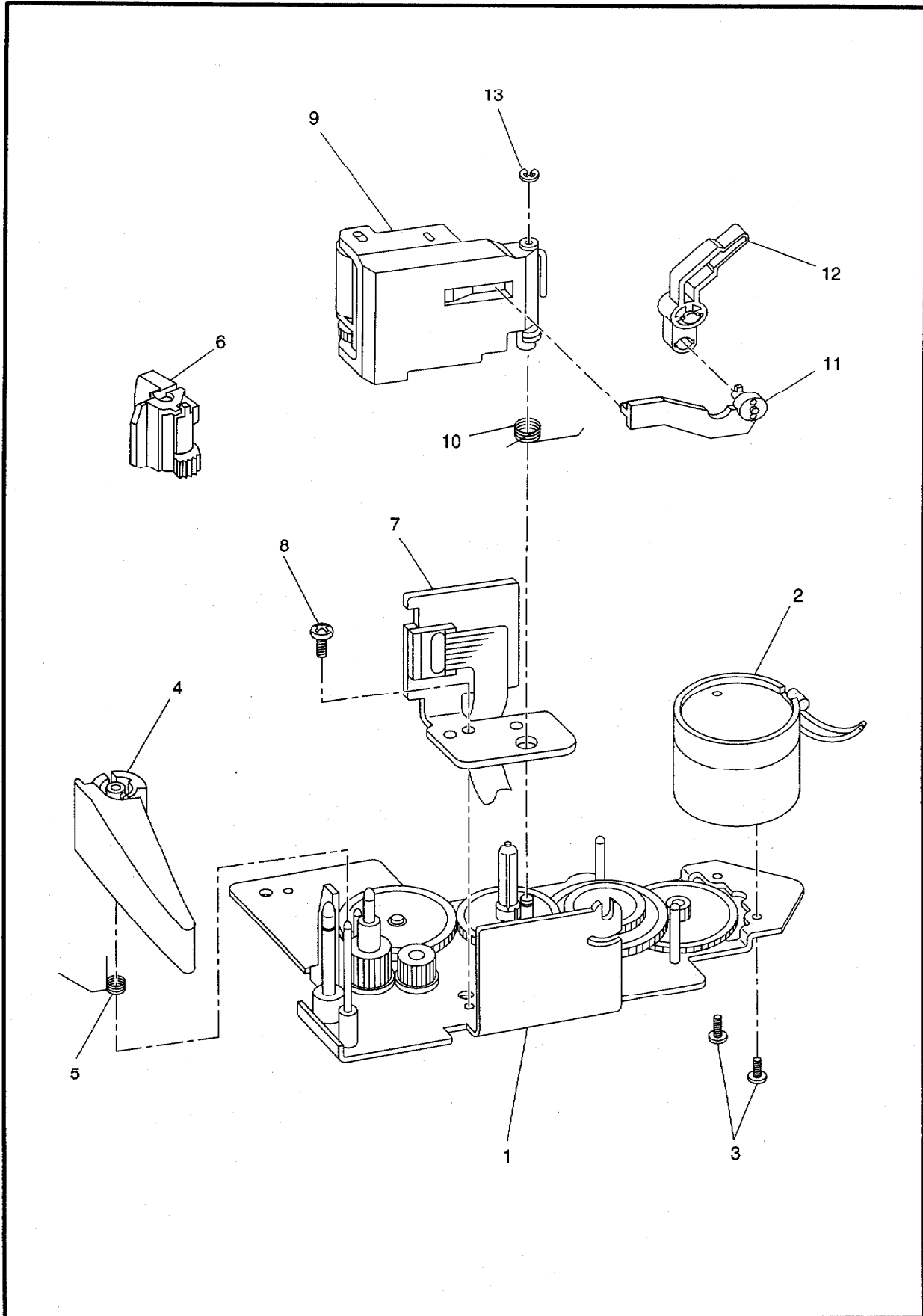
4. Parts are subject to change in design without prior notice.



## CONTENTS

1. PRINT MECHANISM .....	1
2. COVER .....	3
3. KEY CONTACT .....	5
4. SENSOR .....	5
5. MAIN PCB .....	7
6. POWER SUPPLY .....	9
7. PRINT MATERIAL .....	9
8. PACKING MATERIALS .....	11
INDEX .....	13

# 1. PRINT MECHANISM



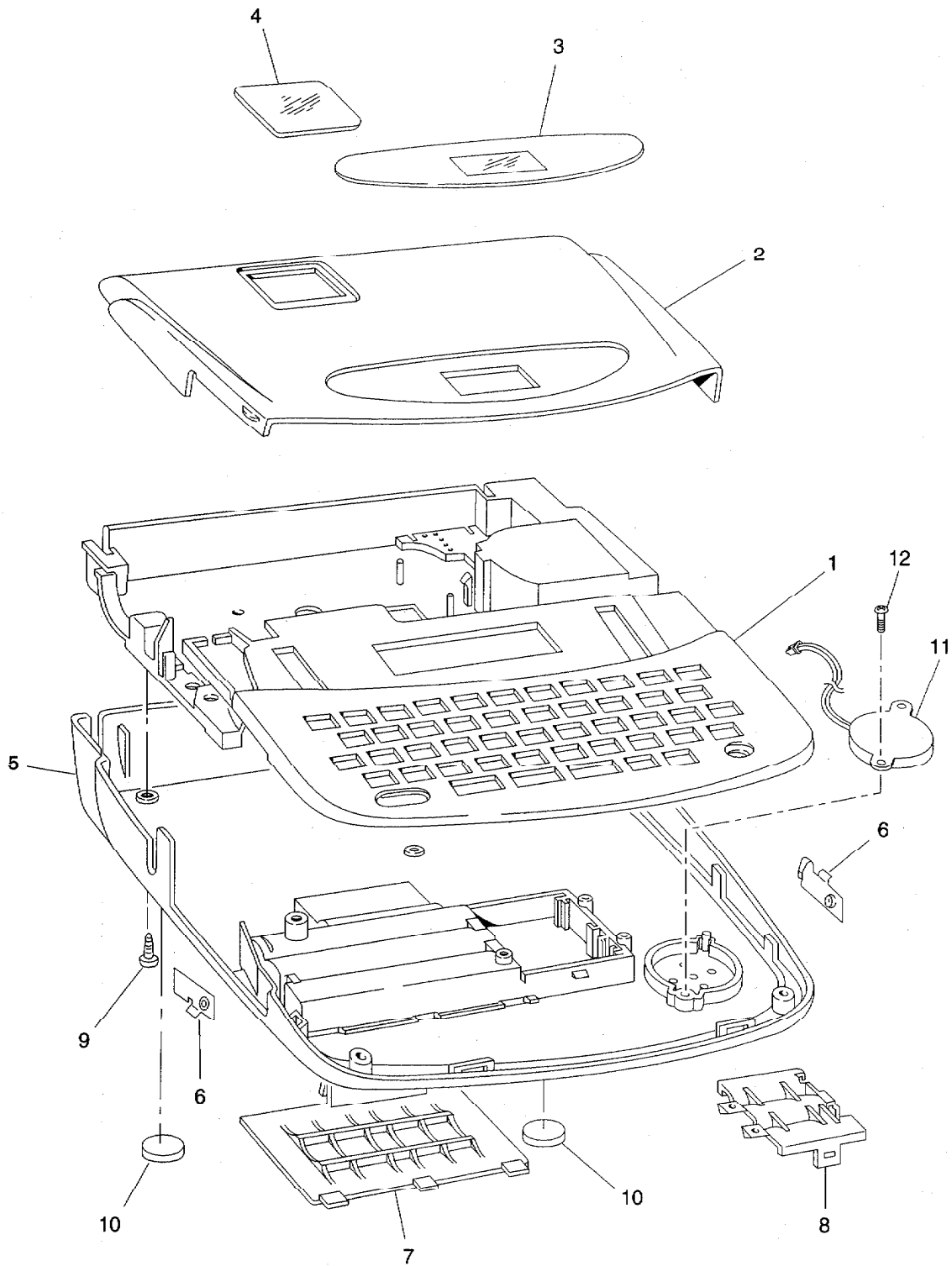
MODEL ST-5 5V2-311-045

# 1. PRINT MECHANISM

REF.NO.	CODE	QTY	DESCRIPTION	REMARKS
1	UN0352001	1	CHASSIS ASSY PT300	
2	UN0370001	1	DC MOTOR ASSY PT300	
3	UR3848001	2	SCREW, PAN M2.6X3.5	
4	UN0373067	1	CUTTER LEVER PT300	
5	UN0374001	1	RELEASE SPRING	
6	UN0872001	1	CUTTER UNIT PT300PL	
7	UN0369001	1	HEAD ASSY KV6418(SP)	
8	080300415	1	SCREW, BIND M3X4	
9	UN0382001	1	ROLLER HOLDER ASSY PT300	
10	UN0392001	1	ROLLER HOLDER SPRING	
11	UN0393001	1	ROLLER RELEASE ROD 300	
12	UN0394001	1	ROLLER RELEASE LEVER 300	
13	048020346	1	RETAINING RING, E2	

MODEL ST-5 5V2-311-045

## 2. COVER



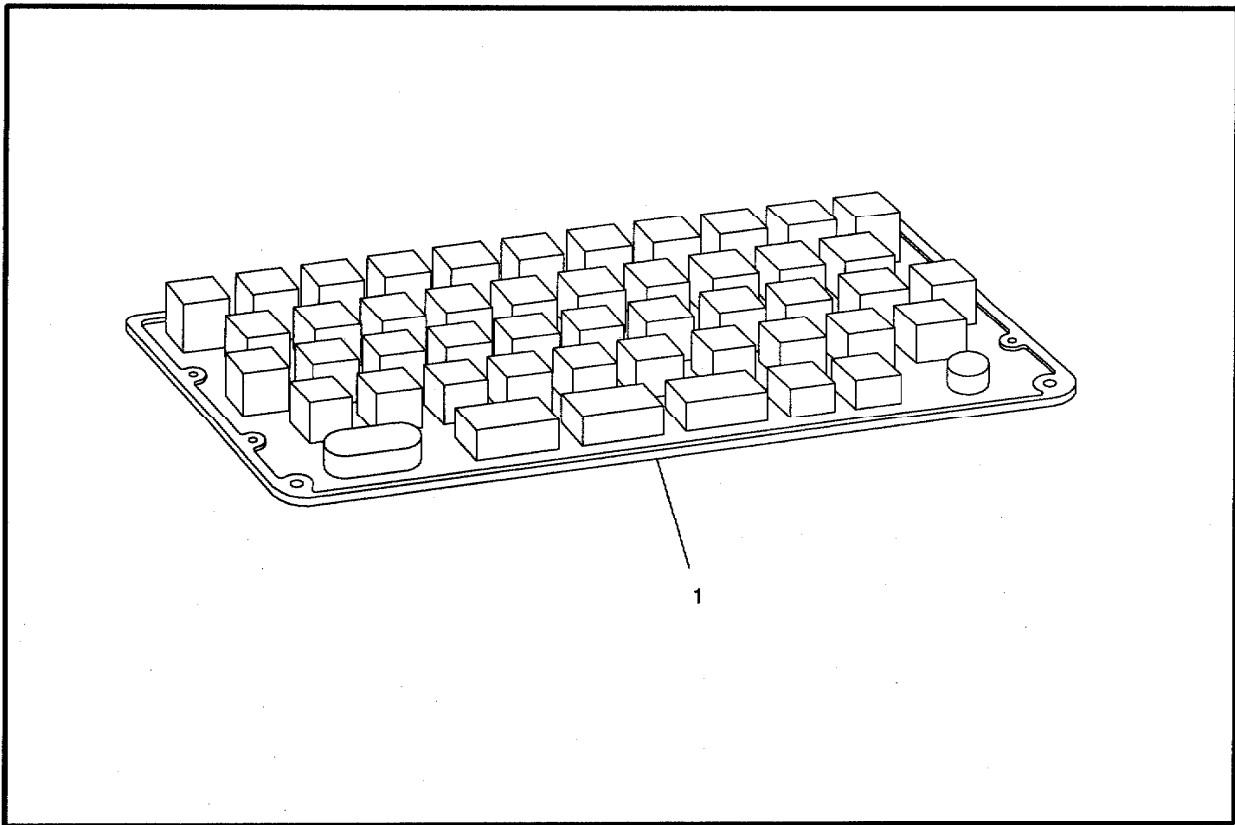
MODEL ST-5 5V2-311-061

## 2. COVER

REF.NO.	CODE	QTY	DESCRIPTION	REMARKS
1	UN0677032	1	BODY COVER TOY, WHITE1250	
2	UN0678065	1	CASSETTE COVER TOY	
3	UN0679001	1	LCD PANEL, TOY	
4	UN0698001	1	TAPE PANEL TOY	
5	UN0681032	1	BOTTOM COVER TOY, WHITE1250	
6	UB3719000	2	BATTERY TERMINAL	
7	UN0400032	1	BATTERY LID, WHITE1250	
8	UN0401032	1	BLIND COVER, WHITE1250	
9	085270617	6	TAPTITE, BIND B M2.6X6	
10	UB4431001	2	BASE PLATE FOOT	
11	UN0693001	1	BUZZER ASSY	
12	087200615	1	TAPTITE, CUP P M2X6	

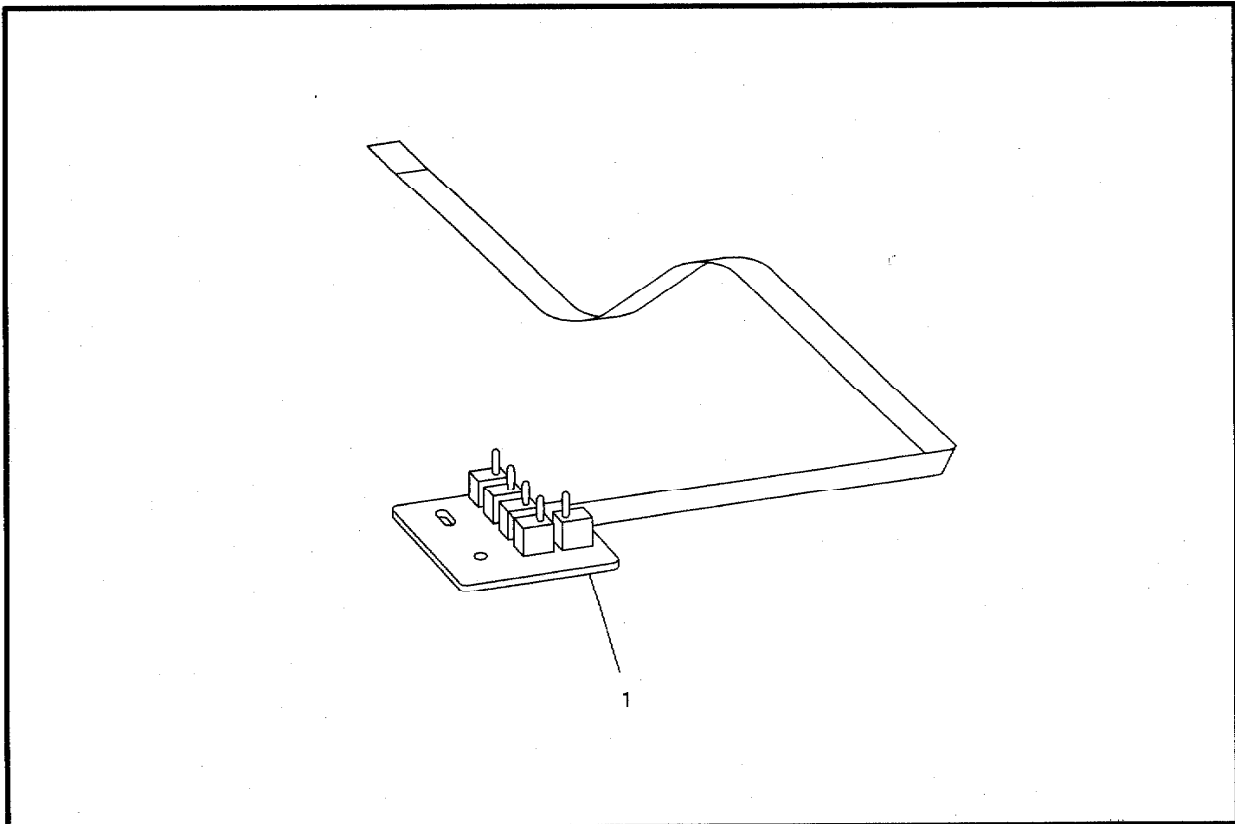
MODEL ST-5 5V2-311-061

### 3. KEY CONTACT



MODEL ST-5 5V2-311-003

### 4. SENSOR



MODEL ST-5 5V2-311-100

### 3. KEY CONTACT

REF.NO.	CODE	Q'TY	DESCRIPTION	REMARKS
1	UN0676001	1	RUBBER 49 KEY TOY, GRAY1267	

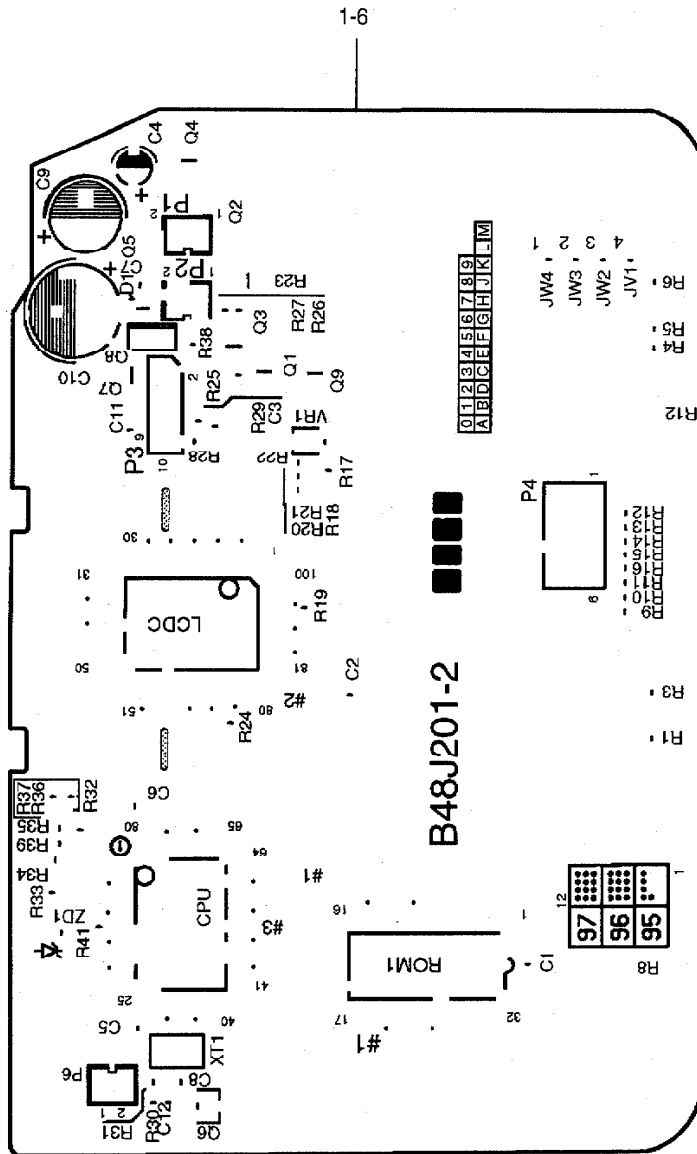
MODEL ST-5 5V2-311-003

### 4. SENSOR

REF.NO.	CODE	Q'TY	DESCRIPTION	REMARKS
1	UN0342001	1	SENSOR PCB ASSY K (SP)	

MODEL ST-5 5V2-311-100

# 5. MAIN PCB

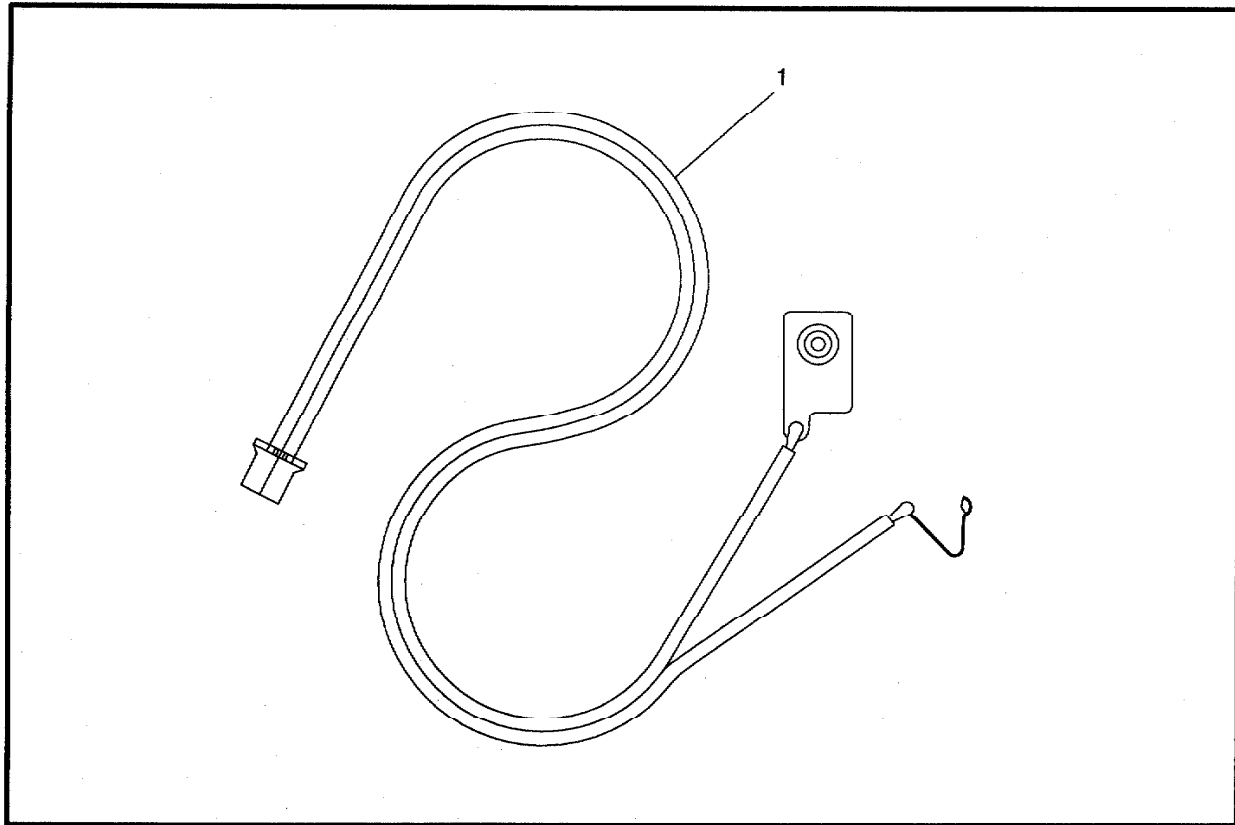


## 5. MAIN PCB

REF.NO.	SYMBOL	CODE	Q'TY	DESCRIPTION	REMARKS
1-6	B48J201-200	UN0692001	1	MAIN PCB ASSY TOY, USA.ENG(SP)	
1	#3	UN0690001	1	MCU:M38067M8	
2	#1	UN0691001	1	MASK ROM:M534001	
3	P2,6	U17118000	2	CONNECTOR:B2B-PH	
4	P1	U17118001	1	CONNECTOR:B2B-PH	
5	P4	UN0314000	1	CONNECTOR:52207-0690	
6	P3	UN0315000	1	CONNECTOR:52806-1010	

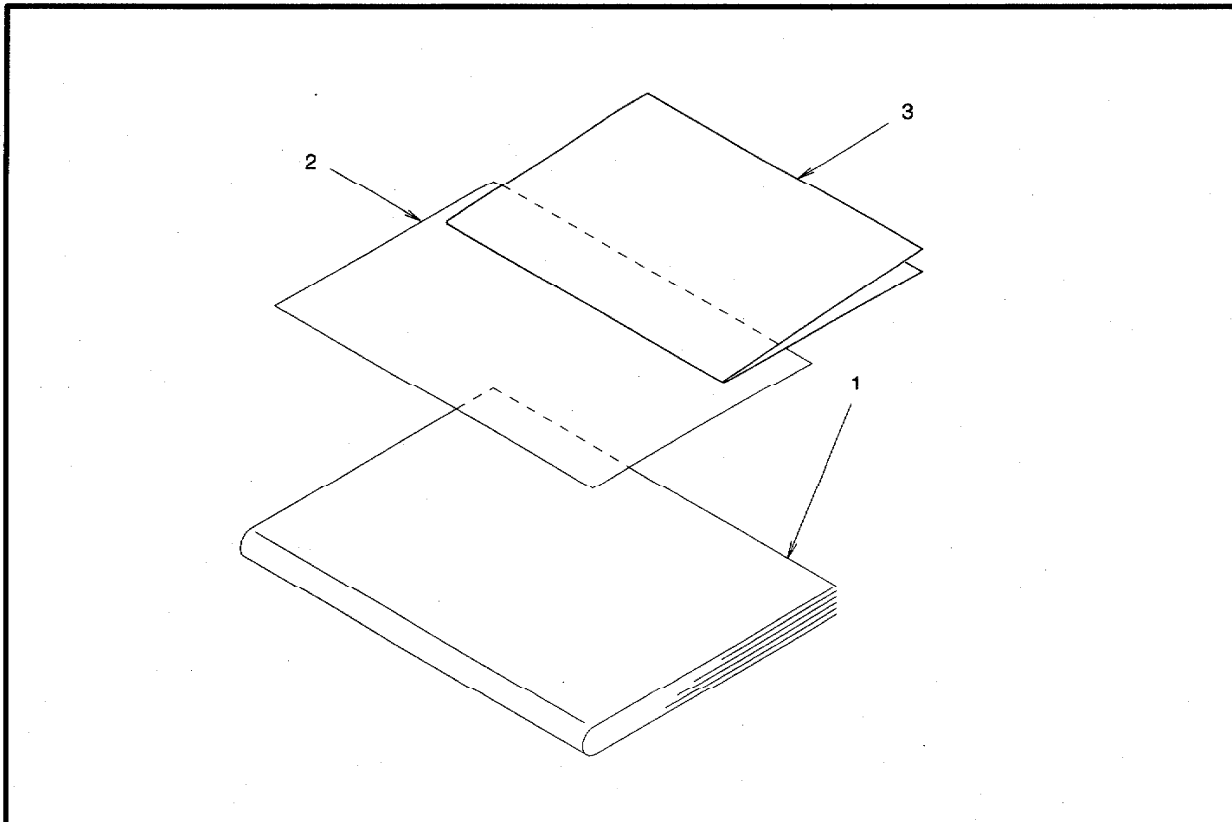
MODEL ST-5 5V2-311-101

## 6. POWER SUPPLY



MODEL ST-5 5V2-311-102

## 7. PRINT MATERIAL



MODEL ST-5 5V2-311-920

### 6. POWER SUPPLY

REF.NO.	CODE	Q'TY	DESCRIPTION	REMARKS
1	UN0402001	1	BATTERY HARNESS ASSY KIDS	

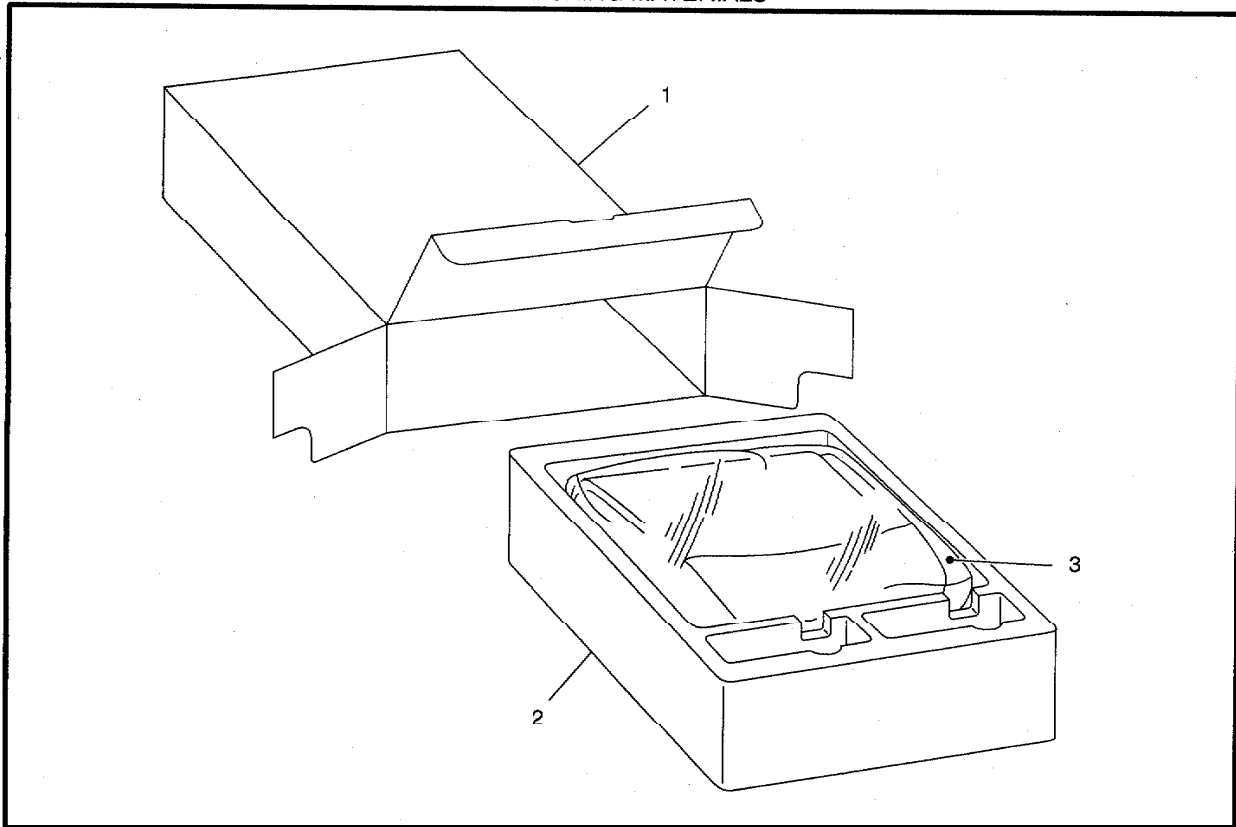
MODEL ST-5 5V2-311-102

### 7. PRINT MATERIAL

REF.NO.	CODE	Q'TY	DESCRIPTION	REMARKS
1	UN0683001	1	USER'S MANUAL TOY, USA	
1	UN0876001	1	USER'S MANUAL TOY, AUS	
2	UN0684001	1	WARRANTY CARD TOY, USA.ENG	
3	UB4382001	1	SERVICE CENTER LIST US	

MODEL ST-5 5V2-311-920

## 8. PACKING MATERIALS



MODEL ST-5 5V2-311-930

# 8. PACKING MATERIALS

REF.NO.	CODE	QTY	DESCRIPTION	REMARKS
1	UN0685001	1	CARTON, US	
1	UN0877001	1	CARTON, AUS	
2	UN0415001	1	STYROFOAM PAD KIDS	
3	UN0450001	1	BAG 280X410	

MODEL ST-5 5V2-311-930

## INDEX

CODE	REF.NO.	Page
UB3719000	2 - 6	4
UB3848001	1 - 3	2
UB4382001	7 - 3	10
UB4431001	2 - 10	4
UN0314000	5 - 5	8
UN0315000	5 - 6	8
UN0342001	4 - 1	6
UN0352001	1 - 1	2
UN0369001	1 - 7	2
UN0370001	1 - 2	2
UN0373067	1 - 4	2
UN0374001	1 - 5	2
UN0382001	1 - 9	2
UN0392001	1 - 10	2
UN0393001	1 - 11	2
UN0394001	1 - 12	2
UN0400032	2 - 7	4
UN0401032	2 - 8	4
UN0402001	6 - 1	10
UN0415001	8 - 2	12
UN0450001	8 - 3	12
UN0676001	3 - 1	6
UN0677032	2 - 1	4
UN0678065	2 - 2	4
UN0679001	2 - 3	4
UN0681032	2 - 5	4
UN0683001	7 - 1	10
UN0684001	7 - 2	10
UN0685001	8 - 1	12
UN0690001	5 - 1	8
UN0691001	5 - 2	8
UN0692001	5 - 1-6	8
UN0693001	2 - 11	4
UN0698001	2 - 4	4
UN0872001	1 - 6	2
UN0876001	7 - 1	10
UN0877001	8 - 1	12
U17118000	5 - 3	8
U17118001	5 - 4	8
048020346	1 - 13	2
060300415	1 - 8	2
085270617	2 - 9	4
087200615	2 - 12	4

CODE	REF.NO.	Page



**brother®**

Aug. '95  
5V2024BE0  
Printed in Japan