

Specifications/

KE-430HX-0

KE-430HS-0

Application	
1	Light materials
3	Medium materials
5	Heavy materials
K	Knitted materials
3	Medium materials
5	Heavy materials



BE-438HX

BE-438HS



Model	KE-430HX				KE-430HS		BE-438HX	BE-438HS
	-01	-03	-05	-0K	-03	-05		
Application	Light materials	Medium materials	Heavy materials	Knitted materials	Medium materials	Heavy materials	Button attaching	
Lubrication	Semi-dry				Minimum lubrication		Semi-dry	Minimum lubrication
Max. sewing speed	3,300sti/min						2,800sti/min	
Sewing area	Max.40×30mm ^{*1}						Max.6.4x6.4mm	
Dimensions of buttons that can be Sewn	—						Outer diameter of buttons 8-30mm ^{*2}	
Stitch length	0.05~12.7mm						0.05~6.4mm	
Feed mechanism	Y-θ intermittent feed mechanism (pulse-motor driven mechanism)							
No. of stitches	Variable (Refer to "Program List" for details on the number of stitches for sewing patterns that are already preset.)							
Max. No. of stitches	5,000 stitches/pattern							
Work clamp lifter	Pulse motor drive system							
Work clamp height / Button clamp height	Max. 17mm						Max. 13mm	
Rotary hook	Shuttle hook (double shuttle hook, optional)							
Digital tension	Standard equipment		—		Standard equipment		—	
Thread wiper	Standard equipment							
Thread trimmer	Standard equipment							
Thread nipper	-01,-03,-0K:Standard equipment (-05:Option)				Option			
Data storage method	Internal flash memory (Data addition is available with external memory)							
No. of cycle programs	30 cycle (50 programs for each cycle)							
No. of stored data	89 sewing patterns are set already				64 sewing pattern are set already			
	(Up to 500 patterns can be added. Total number of stitches of stored data which can be added is within 500,000. ^{*3})							
Motor	AC servo motor 550W (Direct Drive)							
Weight	Machine head: Approx. 58kg, Operation panel: Approx. 0.5kg, Control box: Approx. 7kg							
Power supply	Single-phase 100V/220V, 3-phase 220V/380V/400V 400VA (For single-phase 100V and 3-phase 380V/400V, the trans box is required.)							

*1 Use the optional 50X40 SEWING AREA SET (SB7777001) for wide area of 50x40 mm

*2 Use the optional button clamp (SA9303201) for diameters of 20 mm or greater.

*3 The number of sewing patterns and number of stitches that can be recorded will vary depending on the number of stitches in each sewing pattern.



RoHS
Compliant

KE-430HX/HS, BE-438HX/HS is compliant with the RoHS Directive(the restriction of the use of certain hazardous substances in electrical and electronic equipment) which came into effect in the EU in July 2006.



Brother has established voluntary environmental standards for products and created the "Brother Green Label". KE-430HX/HS, BE-438HX/HS is certified as an environment-conscious sewing machine according to the "Brother Green Label" standard.



Working with you for a better environment
www.brotherearth.com

CHINA	BROTHER MACHINERY SHANGHAI LTD.	http://www.brother.cn/	+86-21-3135-3355
ASIA	BROTHER MACHINERY (ASIA) LTD.	http://www.brother.com.hk/	+852-2777-0010
EUROPE AFRICA, MIDDLE EAST	BROTHER INTERNATIONALE INDUSTRIEMASCHINEN GmbH	http://www.brother-ism.com/	+49-2822-6090
AMERICAS	BROTHER INTERNATIONAL CORPORATION	http://www.brother-usa.com/	+1-908-704-1700

brother

BROTHER INDUSTRIES, LTD.

1-5, Kitajizoyama, Node-cho, Kariya-shi, Aichi 448-0803, Japan,
Phone: 81-566-95-0088 Fax: 81-566-25-3721 http://www.brother.com/

2017.7 170811532 Vol.1

KE-430HX/HS

Electronic Direct Drive Lockstitch Bar Tacker (Short Remaining Thread Spec.)

BE-438HX/HS

Electronic Direct Drive Lockstitch Button Sewer (Short Remaining Thread Spec.)

With the world's fastest sewing speed and prevention of thread breakage with a Needle Cooler, the machine has increased productivity.

It also has superior sewing quality, usability, and reduces maintenance cost.

- Productivity Improvement by World's Fastest Sewing Speed and IoT
- Beautiful and Highly-reproducible Sewing Quality
- Superior Usability as Everyone can Use Easily and Reliably



NEXIO

World's Fastest Sewing

With the world's fastest sewing speed and prevention of thread breakage with a Needle Cooler, the machine has increased productivity. It also has superior sewing quality, usability, and reduces maintenance cost.

Productivity Improvement by World's Fastest Sewing Speed and IoT

1 Overwhelmingly superior productivity with sewing speed 3,300sti/min

KE-430H provides 3,300sti/min (BE-438H: 2,800sti/min) and contributes to enhance productivity.

2 Needle Cooler prevents thread breakage

Needle Cooler* prevents thread breakage, it enhances actual sewing speed by 10%. It provides high productivity and quality.

*KE-430HX

3 Productivity improvement with IoT

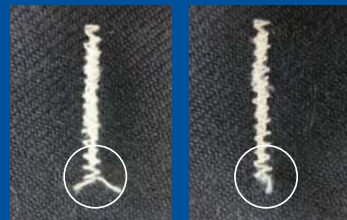
NEXIO series are IoT applicable models. The visualization by connecting sewing machine and computer technology enables the customer to analyze, manage processes, speed up productivity improvement and maintenance work.

4 Reduction of disposition of thread ends (short remaining thread)

Thread trimmer driven by stepping motor cuts the thread shorter, stable and quietly than conventional mechanical thread trimmer. It reduces hand trimming work after sewing.

Also, the thread nipper, equipped as standard*, minimizes thread cast off at sewing start and bird's nest.

*KE-430HX-1, -3, -K spec.



Conventional Model

KE-430H



Beautiful and Highly-reproducible Sewing Quality

5 Thread tension can be set as numerical value by digital tension

You can adjust the tension appropriately for the material being sewn without relying on individual feel. It provides higher production management and sewing reproducibility.

6 Clean sewing without Oil staining

HX models are semi-dry type and they supply constant clean oil only to the shuttle hook, there is no concern of oil staining. HS models are minimum lubrication and they supply limited oil only to the needle bar and thread take-up to prevent oil from being dispersed, realizing clean sewing for your valued product.

Superior Usability as Everyone can Use Easily and Reliably

7 User-intuitive Color LCD with touch panel

Equipped the Color LCD with touch panel that indicates display items with illustration icons, offering use-intuitive operation. It is very easy to set the cycle program, along with sewing patterns, sewing speed, and magnification. The upper thread tension can be stored easily as user programs.



USB port is equipped

Data transfer to other sewing machines and software upgrade can be done easily with USB memory.

8 Reduction of maintenance cost as there is no need for grease-up work.

There is no need for grease-up work at the connecting rod because it adopts oil lubricating, and reduces maintenance work.

9 Low noise and low vibration for stress-free operation

The noise and vibration are minimized by reducing impact during thread trimming. Operators can sew conformably without fatigue and stress.

10 Set button smoothly

BE-438H's renewed button clamp enables to set a button more smoothly.

11 Wide variety of sewing capability due to enlarged sewing area (50x40mm)

Sewing area can be expanded from 40x30mm to 50x40mm as option. It enables to sew more applications such as hook and loop fastener and applique.

