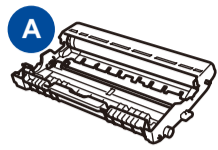


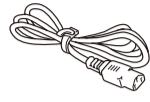


Watch our FAQ Videos for help with setting up your Brother machine:
solutions.brother.com/videos.

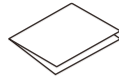
Unpack the machine and check the components



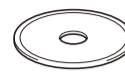
A
Drum Unit
(Pre-installed)



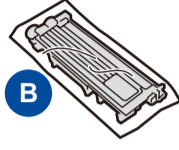
AC Power Cord
(only for certain models)



Quick Setup Guide



CD-ROM



B
Starter Toner Cartridge



Telephone Line Cord
(For MFC models)



Product Safety Guide



Basic User's Guide

Read the Product Safety Guide first, then read this Quick Setup Guide for the correct installation procedure. Manuals in Spanish for this model are available on the enclosed CD-ROM. (USA only)
Manuales en Español para este modelo están disponibles en el CD-ROM incluido. (sólo en Estados Unidos)

NOTE:

- The components included in the box and the AC power plug may differ depending on your country.
- The illustrations in this Quick Setup Guide are based on the MFC-L2740DW.
- You must purchase the correct interface cable for the interface you want to use.

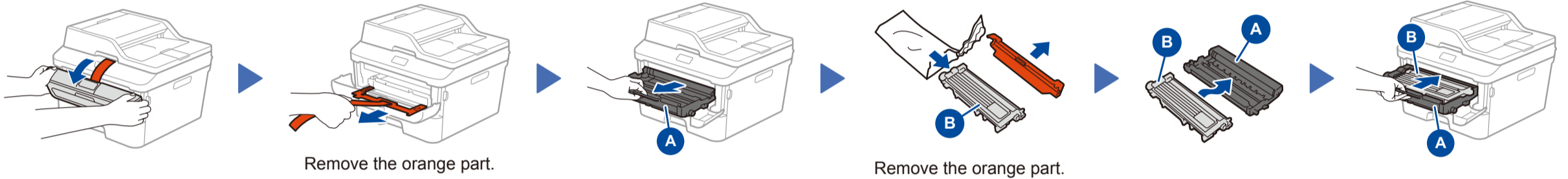
USB cable

We recommend using a USB 2.0 cable (Type A/B) that is no more than 6 feet (2 meters) long.

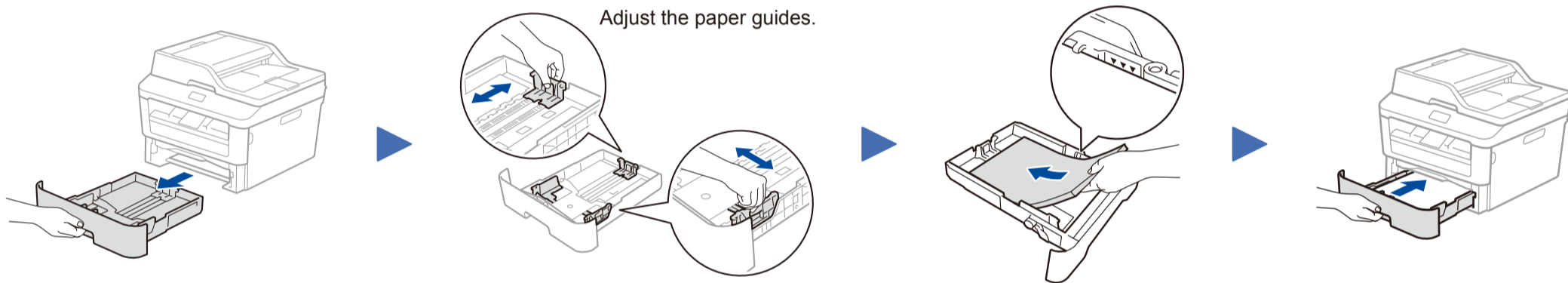
Network cable

Use a straight-through Category 5 (or greater) twisted-pair cable for 10BASE-T or 100BASE-TX Fast Ethernet Network.

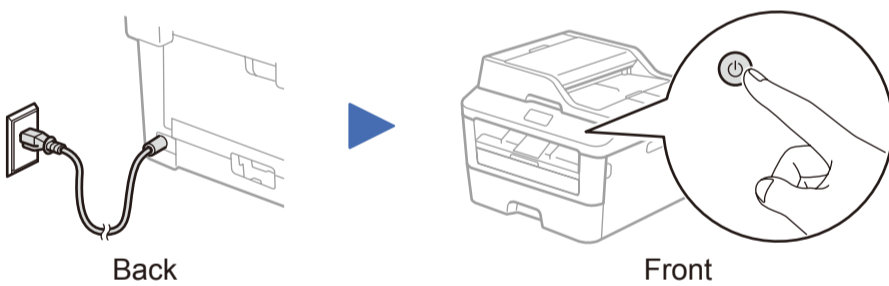
1 Remove the packing materials and install the toner cartridge



2 Load paper in the paper tray

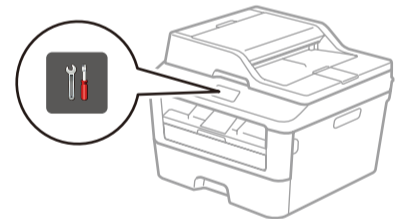


3 Connect the power cord and turn on the machine



4 Select your language (if needed)

- On the machine's Touchscreen, press (Settings) > All Settings > Initial Setup > Local Language.
- Press your language.
- Press .

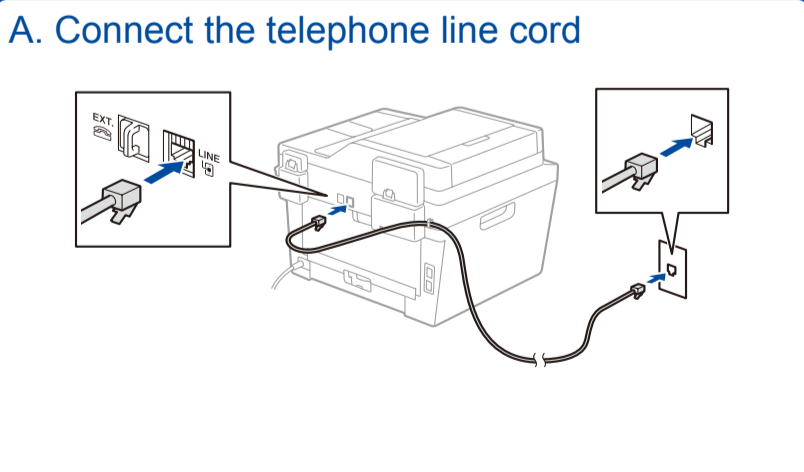


5 Configure the machine for faxing (for MFC models only)

If you do not plan to use the fax feature on this machine, go to step 6.

NOTE:

- To complete fax setup on your machine, see the *Basic User's Guide*.
- Your machine is programmed to automatically receive faxes. To change this default mode, see the *Basic User's Guide*.



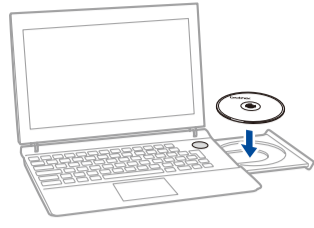
B. Set the date and time
Press (Settings) > All Settings > Initial Setup > Date & Time.
Date
1. Press Date.
2. Enter the last two digits for the year using the Touchscreen, and then press OK.
3. Enter the two digits for the month using the Touchscreen, and then press OK.
4. Enter the two digits for the day using the Touchscreen, and then press OK.

Clock Type
1. Press Clock Type.
2. Press 12h Clock or 24h Clock.
Time
1. Press Time.
2. Enter the time using the Touchscreen.
■ 12h Clock only
Press AM/PM to select AM or PM.
3. Press OK.
4. Press .

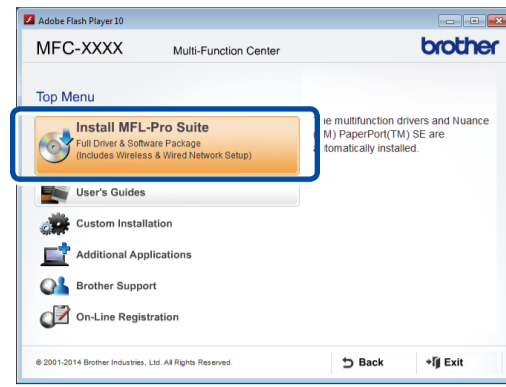
6 Connect the machine to your computer/mobile device

- Windows® PC with a CD-ROM drive, go to step **6A**
- Windows® PC without a CD-ROM drive, go to step **6B**
- Macintosh, go to step **6B**
- Mobile device users, go to step **6C**

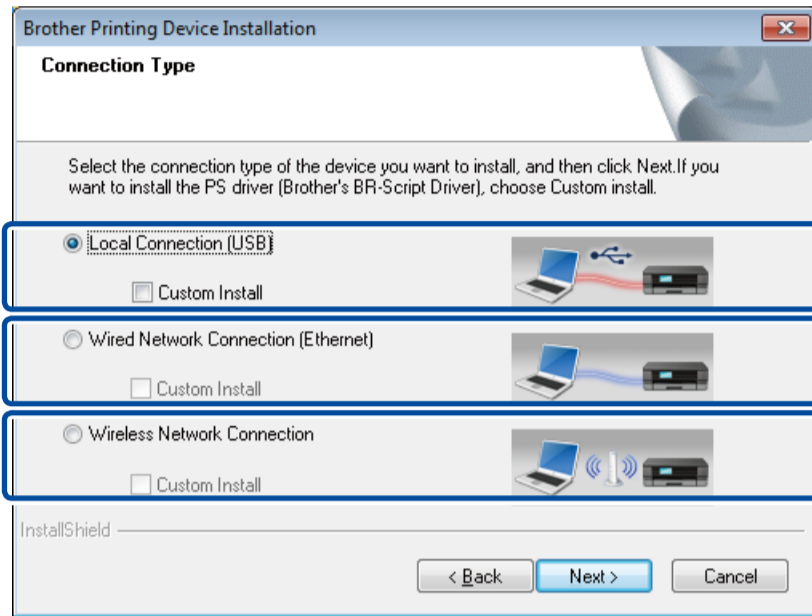


**NOTE:**

If the Brother screen does not appear automatically, go to **Computer (My Computer)**.
(For Windows® 8: click the (File Explorer) icon on the taskbar, and then go to **Computer**.)
Double-click the CD-ROM icon, and then double-click **start.exe**.



Follow the on-screen instructions until the **Connection Type** screen appears.

Connection Type

For USB Connection

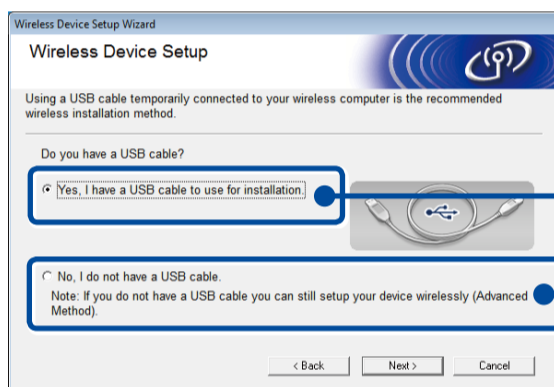
For Wired Network Connection
Connect a network cable first.

For Wireless Network Connection
We recommend preparing a USB cable to use temporarily during the wireless setup.

Follow the on-screen instructions to continue installation.

Finish**NOTE:**

If connection is unsuccessful, repeat this step.

**Wireless Network Connection****[Recommended]**

Select this option if you have a USB cable to use temporarily for wireless setup.

Select this option if you do not have a USB cable.

Follow the on-screen instructions to continue installation.

Finish**NOTE:**

If connection is unsuccessful, repeat this step.



Download the full driver and software package from the Brother Solutions Center.

(For Windows®) solutions.brother.com/windows

(For Macintosh) solutions.brother.com/mac

After you download the driver and software package, follow the on-screen instructions until the **Connection Type** screen appears. Refer to **6A Configuration using the CD-ROM (Windows®)**.

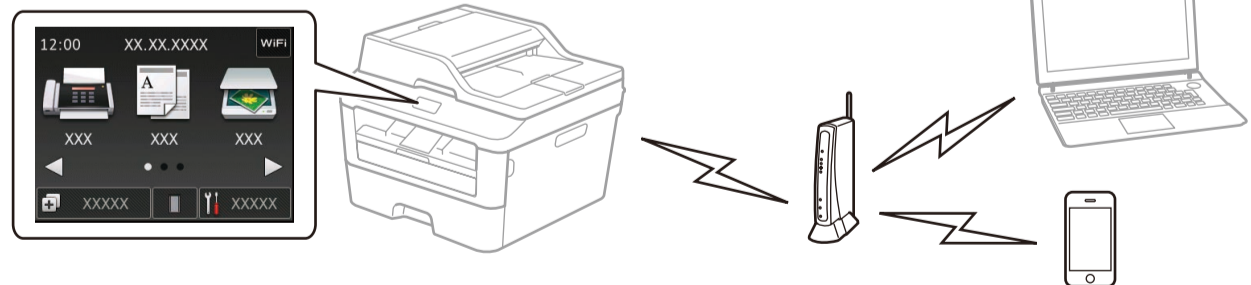


Connect the machine and wireless LAN access point/router from the machine's control panel.

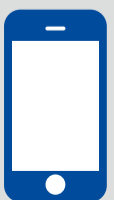
On the machine's control panel, press > Setup Wizard > Yes.

Select the specified SSID, and then enter the Network key.

Wireless setup is now complete.

**NOTE:**

Before you can use your machine with your mobile device, download "Brother iPrint&Scan."



Print and scan using your mobile device

Download "Brother iPrint&Scan" to start using your machine with mobile devices.



solutions.brother.com/ips