


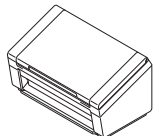





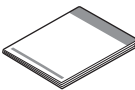
Please read the **Product Safety Guide** starting on page 8 before you set up your machine. Then, please return to this page of the Quick Setup Guide for the correct setup and installation procedure.

 WARNING	WARNING indicates a potentially hazardous situation which, if not avoided, could result in death or serious injuries.
IMPORTANT	IMPORTANT indicates a potentially hazardous situation which, if not avoided, may result in damage to property or loss of product functionality.
NOTE	Notes tell you how you should respond to a situation that may arise or give tips about how the operation works with other features.

1

Unpack the machine and check the components

■ The components included in the box may differ depending on your country.

	 USB 3.0 Interface Cable	 DVD-ROM	 AC adapter
 Power cord	 Product Registration Sheet (USA and Canada only) Warranty Card	 Quick Setup Guide	

You can download the *User's Guide* for your model from the Brother Solutions Center at <http://support.brother.com>. If your computer does not have a DVD-ROM drive, the supplied DVD-ROM does not contain drivers for your operating system, or you want to download manuals and utilities, visit your model page at <http://support.brother.com>.



WARNING

- This product was packaged in a plastic bag. To avoid suffocation, keep plastic bags away from babies and children. Do not use the bag in cribs, beds, carriages, or play pens. The bag is not a toy.
- Use only the AC adapter and power cord supplied with this product.

NOTE

- We recommend saving the original packaging in case you must ship your machine.
- Use the supplied USB cable when you connect the machine to a computer.

a Remove the protective tape and film covering the machine and the LCD or Control Panel.

b Make sure you have all the components.

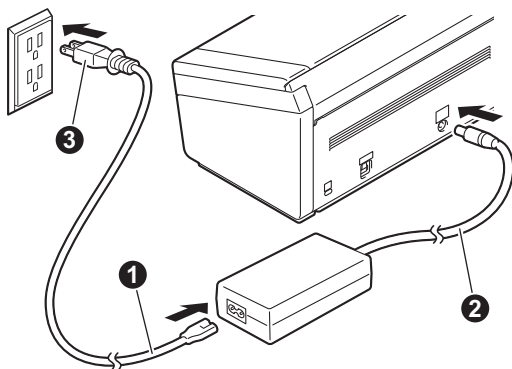
2

Connect the AC adapter

NOTE

- Use only the power cord supplied with this product.
- Use the power cord that conforms to your country.

Connect the power cord ① to the AC adapter, and connect the AC adapter cord ② to the machine. Insert the plug ③ provided into the outlet.



For Windows®
(Windows® XP Home/
XP Professional/
Windows Vista®/Windows® 7/
Windows® 8, 8.1)

3

Before you install

Make sure that your computer and your Brother machine are ON.

NOTE


If there are any programs running, close them.

4

Install Scanner Driver

- a** Put the DVD-ROM into your DVD-ROM drive. When the language screen appears, select your language.

NOTE

- If the Brother screen does not appear automatically, go to **Computer (My Computer)**.
(For Windows® 8/8.1: click the  (File Explorer) icon on the taskbar, and then go to **Computer**.)
- Double-click the DVD-ROM icon, and then double-click **start.exe**.

b

Click **Install Scanner Driver** and follow the on-screen instructions.

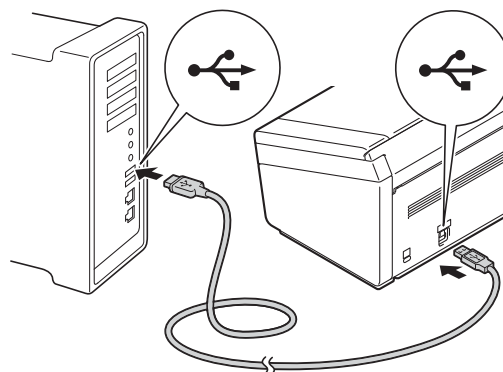


NOTE

When you install the scanner driver, DS Capture (a scanning application) will be installed at the same time. For more information on using DS Capture, see *Use DS Capture* in the User's Guide.

c

When prompted by the installer, connect the supplied USB Cable to the USB ports on your computer (USB 3.0 port recommended) and machine.



Finish

The installation is now complete and it is time to do a test scan. See **Test Scan (scan to a computer)** on page 6.

For Macintosh OS X v10.8.x, 10.9.x and 10.10.x

3 Before you install

Make sure that your computer and your brother machine are ON.

NOTE

If there are any programs running, close them.

4 Install Scanner Driver

- a** Download the full driver and software package from the Brother Solutions Center (<http://support.brother.com>).

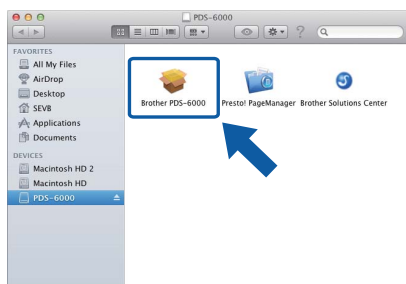
Click **Downloads**, navigate to your product page, then select your OS.

NOTE

For help identifying your OS, click the link **How to identify your Operating System (OS)**.

- b** Double-click the **Brother PDS-XXXX.dmg** file to install.

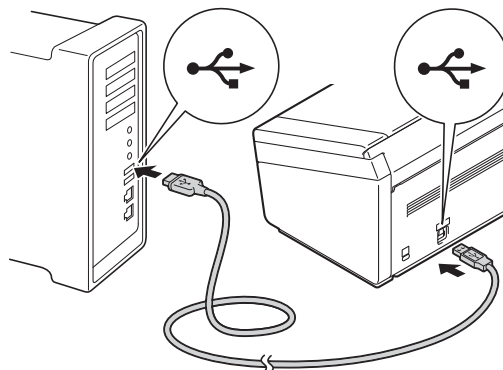
- c** Double-click **Brother PDS-XXXX** and follow the on-screen instructions.



NOTE

When you install the scanner driver, DS Capture (a scanning application) will be installed at the same time. For more information on using DS Capture, see *Use DS Capture* in the User's Guide.

- d** When prompted by the installer, connect the supplied USB Cable to the USB ports on your computer (USB 3.0 port recommended) and machine.



Finish

The installation is now complete and it is time to do a test scan. See **Test Scan (scan to a computer)** on page 6.

Download your Brother machine's software applications and user's guides, as listed in the tables below, from the Brother Solutions Center.

<http://support.brother.com>

Choose one of the following:

For software applications, utilities, drivers and firmware updates:

1. Click **Downloads**.
2. Type your model name, and then click **Search**.
3. Select your **OS Family** and **OS Version**, and then click **Search**.
4. Click the item you want.

For user's guides:

1. Click **Manuals**.
2. Type your model name, and then click **Search**.
3. Click the user's guide you want.

NOTE

For help identifying your model name, click the link: **How to identify your model name**.

Software Applications and where to find them

Software	Description	Where is it?
DS Capture (Windows®/Mac)	This is a simple scanning application. This scanning application from Brother is installed automatically from the DVD-ROM when you install the scanner driver.	Windows®: DVD / Brother Solutions Center ¹ Mac: Brother Solutions Center ¹
Button Manager V2 (Windows®)	Use this application to create multiple types of scan buttons to perform one-touch scanning. If scanning from your computer, click the button where the scan settings have been assigned using the application. If scanning from your machine, select the menu where the scan settings have been assigned using the LCD screen, and then press the machine's Scan button. The following scan functions are supported: Scan to File / Scan to File (OCR) / Scan to App / E-Mail / Printer / Shared Folder / FTP / SharePoint See the Button Manager Help menu for more information about using Button Manager V2.	DVD / Brother Solutions Center ¹
OmniPage SE 18 (Windows®)	OmniPage SE 18 is an OCR scanning application from Nuance.	DVD
QuickScan Pro (Windows®)	QuickScan Pro is a trial document capture scanning application from EMC.	DVD
PageManager 9 (Mac)	PageManager 9 is a scanning application from NewSoft.	Brother Solutions Center ¹

¹ Visit <http://support.brother.com>

NOTE

In addition to the above, you can also use your TWAIN (Windows®/Mac), WIA (Windows®), ISIS (Windows®) and ICA (Mac) compatible applications for scanning.

User's Guides and where to find them

Which manual?	What's in it?	Where is it?
Quick Setup Guide	Follow the instructions for setting up your machine and installing the drivers and software for your operating system. This guide includes the Product Safety Guide instructions. Before you set up your machine, read the safety instructions first.	Printed / In the box
User's Guide	Learn the Scan operations and how to perform routine maintenance. See troubleshooting tips if you have difficulty.	PDF file / Brother Solutions Center ¹

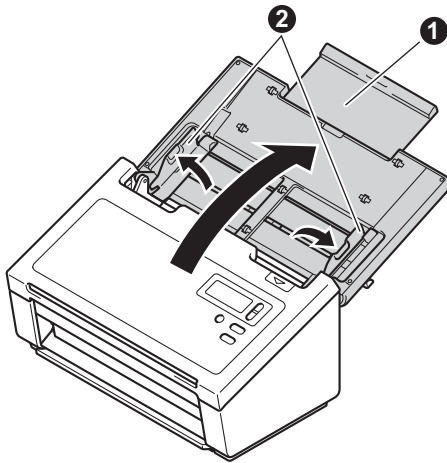
¹ Visit <http://support.brother.com>

Test Scan (Scan to a Computer)

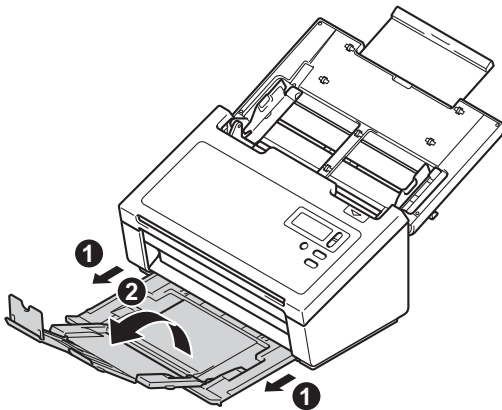
1 Load your document

Make sure your machine and computer are connected with the supplied USB Cable.

- a** Open the Top Cover ❶, and then unfold the Document Guides ❷.



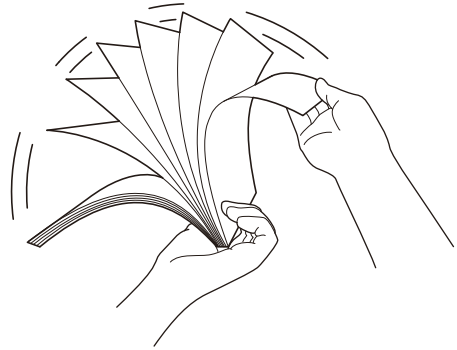
- b** Pull out the Output Tray ❶, and then unfold the Document Stopper ❷.



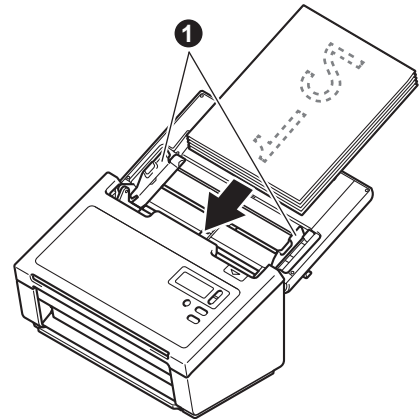
IMPORTANT

Always open the top cover and output tray completely. Failure to do so may cause a risk of damage to the document.

- c** Fan the pages well.



- d** Place your document, face down, top edge first in the document feeder between the Document Guides until you feel it gently touch the inside of the machine. Adjust the Guides ❶ to fit the width of your document.




Test Scan (Scan to a Computer)


2

Scan using DS Capture

(Windows®)

- a** Double-click  (**DS Capture**) on your desktop.
- b** Select your scanner model, and then click **OK**.
- c** Click **Scan** in the DS Capture application screen. Your machine starts scanning.

(Macintosh)

- a** Double-click  (**DS Capture**) on your desktop.
- b** Click **Scan** in the DS Capture application screen or press the **Scan** button on the machine. Your machine starts scanning.

NOTE

- To scan documents and configure various settings, please make sure you have installed the driver and connected the machine to your computer by following the instructions in this guide.
- For more information about other scanning features, see *Scan using your computer* in the User's Guide.

Product Safety Guide

Failure to follow these instructions may result in an increased risk of personal injury or damage to property, including through fire, electrical shock, burns or suffocation.

Symbols and conventions used in the documentation

The following symbols and conventions are used throughout the documentation.

WARNING

WARNING indicates a potentially hazardous situation which, if not avoided, could result in death or serious injuries.

CAUTION

CAUTION indicates a potentially hazardous situation which, if not avoided, may result in minor or moderate injuries.

IMPORTANT

IMPORTANT indicates a potentially hazardous situation which, if not avoided, may result in damage to property or loss of product functionality.

NOTE

Notes tell you how you should respond to a situation that may arise or give tips about how the operation works with other features.



Prohibition icons indicate actions that must not be performed.



This icon indicates that flammable sprays may not be used.



This icon indicates that organic solvents such as alcohol and liquids may not be used.



Electrical Hazard icons alert you to possible electrical shock.



Fire Hazard icons alert you to the possibility of fire.



Unplug icons indicate that you should unplug the machine.

Bold

Bold typeface identifies specific keys on the machine's control panel or on the computer screen.

Italics

Italicized typeface emphasizes an important point or refers you to a related topic.

Courier New

Text in Courier New font identifies messages on the LCD of the machine.

Follow all warnings and instructions marked on the machine.

NOTE

The illustrations in this guide show the PDS-6000.

Compilation and Publication

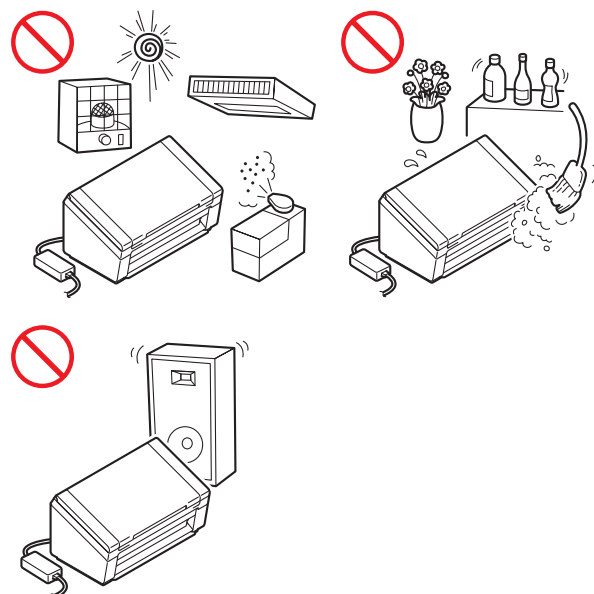
Under the supervision of Brother Industries, Ltd., this manual has been compiled and published, covering the latest product descriptions and specifications.

The contents of this manual and the specifications of this product are subject to change without notice.

Brother reserves the right to make changes without notice in the specifications and materials contained herein and shall not be responsible for any damages (including consequential) caused by reliance on the materials presented, including but not limited to typographical and other errors relating to the publication.

Choosing a location

Put your machine and AC adapter (hereinafter collectively referred to as "the unit") on a flat, level, stable surface that is free of vibration and shocks, such as a desk. Choose a location where the temperature remains between 41 and 95°F (5 and 35°C) and the humidity is between 20 to 80% (without condensation).



WARNING



The unit should be connected to an AC power source within the range indicated on *Specifications* in the *User's Guide*. DO NOT connect it to a DC power source or inverter. Doing this might cause an electrical shock or a risk of fire. If you are not sure what kind of power source you have, contact a qualified electrician.

This product must be installed near an AC power outlet that is easily accessible. In case of an emergency, you must unplug the power cord from the AC power outlet to shut off the power completely.

IMPORTANT

- Brother cannot accept any financial or other responsibilities that may be the result of your use of this information, including direct, special or consequential damages. There are no warranties extended or granted by this document.
- This machine has been certified to comply with FCC standards, which are applied to the USA only.
- Changes or modifications not expressly approved by Brother Industries, Ltd. could void the user's authority to operate the equipment.



DO NOT expose the unit to direct sunlight, excessive heat, open flames, corrosive gasses, moisture or dust.

DO NOT place the unit on a carpet or rug, as this will expose it to dust. Exposing the unit to dust may create a risk of an electrical short or fire. It may also damage the unit and/or render it inoperable.



DO NOT place the unit near heaters, air conditioners, electric fans, refrigerators, radiators, or water. Doing so may create the risk of a short circuit or fire should water come into contact with the unit (including condensation from heating, air conditioning, and/or ventilation equipment that may be sufficient to create a short circuit or fire).



DO NOT place the unit near chemicals or in a place where chemicals could be spilled on it. Should chemicals come into contact with the unit, there may be a risk of fire or electric shock. In particular, organic solvents or liquids such as benzene, paint thinner, polish remover, or deodorizer may melt or dissolve the plastic cover and/or cables, resulting in a risk of fire or electric shock. These or other chemicals may also cause the unit to malfunction or become discolored.



The product should be placed so as not to come into contact with any wall or other device. Otherwise, it could create a risk of overheating and/or fire.

Instead:

- Place the unit on a solid surface, never on a bed, sofa, rug, or other similar soft surface.

CAUTION

Avoid placing the unit in a high-traffic area. If you must place it in a high-traffic area, ensure that the unit is in a safe location where it cannot be accidentally knocked over, which could cause injury to you and serious damage to the unit.

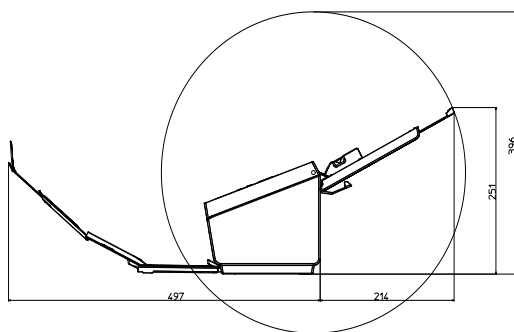
Ensure that cables and cords leading to the unit are secured so as not to pose a tripping hazard.

DO NOT place the unit on an unstable or tilted cart, stand, table or on any tilted/slanted surface. The machine is heavy and may fall, causing injury to you or others and serious damage to the unit.

Make sure that no part of the unit protrudes from the desk or stand where the unit is located. Make sure that the unit is located on a flat, level, and stable surface free from vibration. Failure to observe these precautions could cause the unit to fall, causing injury to you or others and serious damage to the unit.

IMPORTANT

- DO NOT place your machine next to sources of interference, such as speakers or the base units of non-Brother cordless telephones. Doing so may interfere with the operation of the machine's electronic components.
- DO NOT connect the unit to an AC power outlet controlled by wall switches or automatic timers. Disruption of power can delete information from the machine's memory, and repeated cycling of the power can damage the unit.
- Always open the top cover and output tray completely. Failure to do so may cause a risk of damage to the document.



To use the unit safely

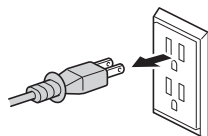
WARNING

ELECTRICAL HAZARDS

Failure to follow the warnings in this section may create the risk of an electrical shock. In addition, you could create the risk of an electrical short, which may create the risk of a fire.



There are high-voltage electrodes inside the unit. Before you access the inside of the machine, including for routine maintenance such as cleaning, make sure you have unplugged the power cord from the AC power outlet.



DO NOT push objects of any kind into the unit through slots or openings in the machine, as they may touch dangerous voltage points or short out parts.



DO NOT continue using the unit if it has been dropped or the machine has been damaged. Instead, unplug the unit from the power outlet and contact Brother Authorized Service Personnel.



If water, other liquids, or metal objects get inside the unit, immediately unplug the unit from the AC power outlet and contact Brother Authorized Service Personnel.



Power Cord Safety:

- Use only the power cord supplied with this product.
- DO NOT allow anything to rest on the power cord.
- DO NOT place the unit where people can walk on the cord.
- DO NOT place the unit in a position where the cord is stretched or strain is otherwise put on the cord, as it may become worn or frayed.
- DO NOT use the unit or handle the cord if the cord has become worn or frayed. If unplugging the unit, DO NOT touch the damaged/frayed part.
- Brother strongly recommends that you DO NOT use any type of extension cord.

AC Adapter Safety



Only use the supplied AC adapter with the unit. Only plug the AC adapter into a power outlet with voltage that is within the range indicated on *Specifications* in the *User's Guide*. Failure to do so may result in injury to yourself or others, or damage to the machine or other property. Brother does not assume any responsibility for any damage resulting from using an AC adapter other than the one specified.



DO NOT use a damaged AC adapter.



DO NOT place heavy objects on, damage, or modify the AC adapter.



DO NOT forcibly bend the cord of the AC adapter.



DO NOT forcibly pull the cord of the AC adapter.

Product Safety Guide



DO NOT drop, hit, or otherwise damage the AC adapter.



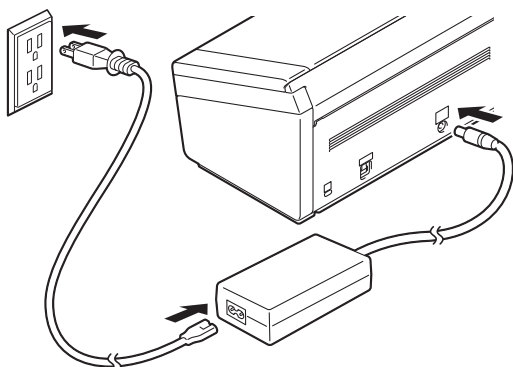
DO NOT use or touch the unit during a thunderstorm when the AC adapter is plugged in. There may be a remote risk of electric shock from lightning when the machine is used during a thunderstorm.



When disconnecting the AC adapter from the machine or from the power outlet, always hold the connector, not the cable, and pull firmly. Failure to do so may result in exposed or broken power cord wires and/or create a risk of fire, or electric shock.



Make sure that one end of the power cord is firmly plugged into a standard power outlet and the other end is firmly plugged into the adapter block. Do not use an outlet that is loose. If the power cord is not completely plugged into the power outlet and adapter block, the adapter may become hot and/or catch fire.



DO NOT exceed the rated input or output, referring to the rated label on the AC adapter.



DO NOT connect the supplied AC adapter to other products.

This product was packaged in a plastic bag. To avoid suffocation, keep this plastic bag away from babies and children. Do not use the bag in cribs, beds, carriages or play pens. The bag is not a toy.

FIRE HAZARDS

Failure to follow the warnings in this section may create the risk of a fire.



DO NOT use flammable substances, any type of spray or an organic solvent/liquid that contains alcohol or ammonia to clean the inside or outside of the unit. Doing this may cause a risk of fire or electrical shock.



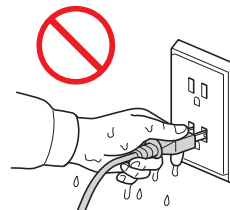
Do not disassemble or modify the unit, otherwise fire or electric shock may result. If the unit requires repair, contact Brother Authorized Service Personnel.



If the unit becomes hot, releases smoke, or generates any strong smells, immediately unplug the unit from the power outlet and call Brother Customer Service.



DO NOT touch the AC adapter or handle the plug with wet hands.



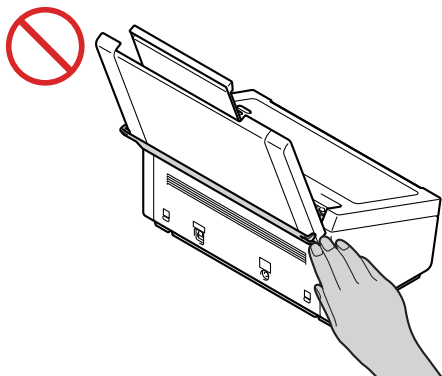
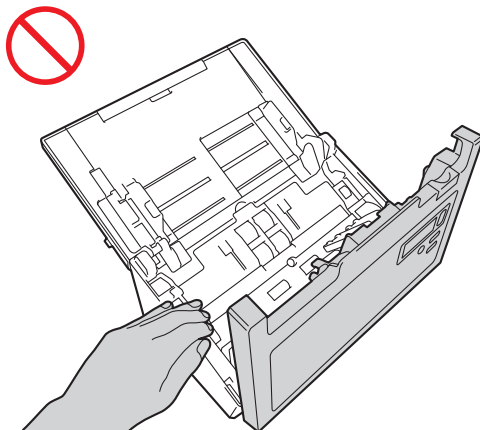
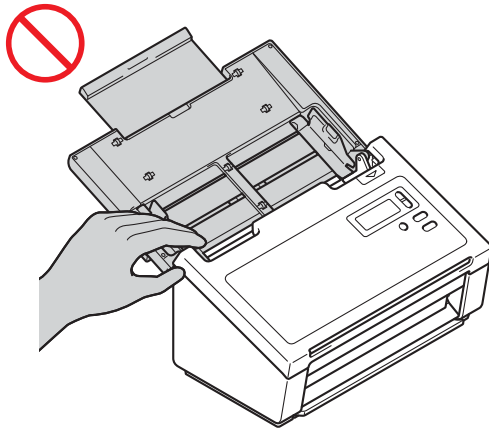
Product Safety Guide

CAUTION

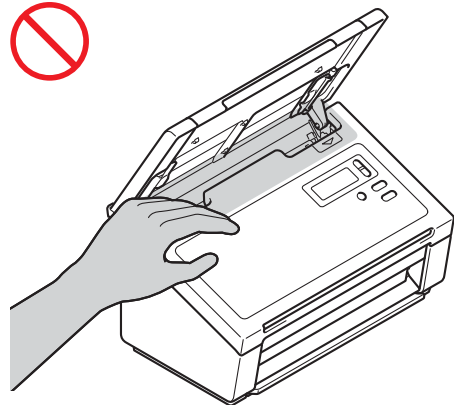
DO NOT sit or stand on the unit or use it for any purpose beyond its intended purpose.

Wait until pages have exited the machine before picking them up. Otherwise, you could cause injury to your fingers by trapping them in a roller.

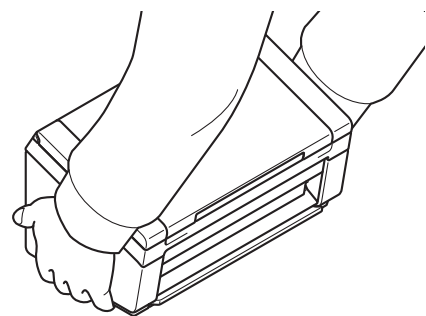
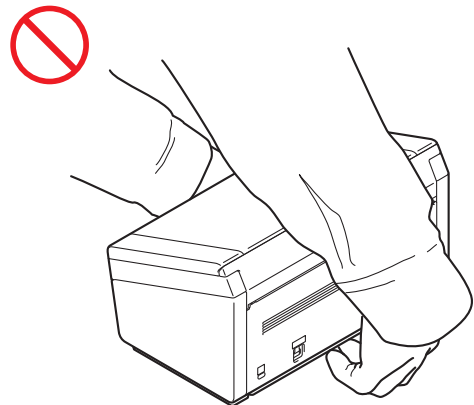
DO NOT put your hands on the edge of the machine when you or others open or close covers. Doing this may pinch your fingers, resulting in injury.



DO NOT touch the shaded area shown below when the top cover is open. Doing this may pinch your fingers, resulting in injury.



DO NOT carry the machine by holding the top cover. Doing this may cause the machine to slip out of your hands. Only carry the machine by placing your hands under the entire machine.



If you do not intend to use the unit for an extended period of time, disconnect the AC adapter from the power outlet, there may be a risk of fire or electric shock.

Use caution when operating the machine to prevent clothing (particularly sleeves, neckties, etc.), hair, or accessories from being drawn into the machine, otherwise injury may result. In the event that an object is drawn into the machine, immediately disconnect the unit from the power source.

IMPORTANT

- DO NOT put objects on top of the unit.
- If the machine does not operate normally when the operating instructions are followed, adjust only those controls that are covered by the operating instructions. Improper adjustment of other controls may result in damage or minor exposure to electromagnetic waves and will often require extensive work by a qualified technician to restore the machine to normal operation.
- A distinct change in the machine's performance may indicate a need for service.

Important safety instructions

DO NOT attempt to service the unit yourself because opening or removing covers may expose you to dangerous voltage points and other risks and may void your warranty. Refer all servicing to a Brother Authorized Service Center. For the location of your nearest Brother Authorized Service Center, please call:

In USA: 1-877-BROTHER (1-877-276-8437)

In Canada: www.brother.ca/support

Regulation

Federal Communications Commission (FCC) Declaration of Conformity (USA only)

Responsible Party: Brother International Corporation
200 Crossing Boulevard
Bridgewater, NJ 08807-0911 USA
TEL: (908) 704-1700

declares, that the products

Product Name: PDS-5000 and PDS-6000

comply with Part 15 of the FCC Rules. Operation is subject to the following two conditions:

(1) This device may not cause harmful interference, and (2) this device must accept any interference received, including interference that may cause undesired operation.

This equipment has been tested and found to comply with the limits for a Class B digital device, pursuant to Part 15 of the FCC Rules. These limits are designed to provide reasonable protection against harmful interference in a residential installation. This equipment generates, uses, and can radiate radio frequency energy and, if not installed and used in accordance with the instructions, may cause harmful interference to radio communications. However, there is no guarantee that interference will not occur in a particular installation. If this equipment does cause harmful interference to radio or television reception, which can be determined by turning the equipment off and on, the user is encouraged to try to correct the interference by one or more of the following measures:

- Reorient or relocate the receiving antenna.
- Increase the separation between the equipment and receiver.
- Connect the equipment into an outlet on a circuit different from that to which the receiver is connected.
- Consult the dealer or an experienced radio/TV technician for help.

IMPORTANT

- Changes or modifications not expressly approved by Brother Industries, Ltd. could void the user's authority to operate the equipment.
- A specific shielded interface cable should be used to ensure compliance with the limits for a Class B digital device.

Industry Canada Compliance Statement (Canada only)

This Class B digital apparatus complies with Canadian ICES-003. Operation is subject to the following two conditions: (1) this device may not cause interference, and (2) this device must accept any interference, including interference that may cause undesired operation of the device.

Cet appareil numérique de la classe B est conforme à la norme NMB-003 du Canada. L'exploitation est autorisée aux deux conditions suivantes : (1) l'appareil ne doit pas produire de brouillage, et (2) l'utilisateur de l'appareil doit accepter tout brouillage radioélectrique subi, même si le brouillage est susceptible d'en compromettre le fonctionnement.

For use in the USA or Canada only

These machines are made for use in the USA and Canada only. We cannot recommend using them overseas because the power requirements of your machine may not be compatible with the power available in foreign countries. Using USA or Canada models overseas is at your own risk and may void your warranty.

International ENERGY STAR® Qualification Statement

The purpose of the International ENERGY STAR® Program is to promote the development and popularization of energy-efficient equipment.

As an ENERGY STAR® Partner, Brother Industries, Ltd. has determined that this product meets the ENERGY STAR® specifications for energy efficiency.



Trademarks

BROTHER is either a trademark or a registered trademark of Brother Industries, Ltd.

Microsoft, Windows, Windows Vista, Windows Server, Outlook and Internet Explorer are either registered trademarks or trademarks of Microsoft Corporation in the United States and/or other countries.

Apple, Macintosh, Mac OS and Safari are trademarks of Apple Inc., registered in the United States and other countries.

Nuance, the Nuance logo and ScanSoft are trademarks or registered trademarks of Nuance Communications, Inc. or its affiliates in the United States and/or other countries.

ISIS, Captiva and QuickScan are either registered trademarks or trademarks of EMC Corporation in the United States and/or other countries.

Each company whose software title is mentioned in this manual has a Software License Agreement specific to its proprietary programs.

Any trade names and product names of companies appearing on Brother products, related documents and any other materials are all trademarks or registered trademarks of those respective companies.

Copyright and License

© 2014 Brother Industries, Ltd. All rights reserved.

Legal limitations for copying

Observe all copyright laws when using this product.

Color reproductions of certain documents are illegal and may result in either criminal or civil liability. This memorandum is intended to be a guide rather than a complete listing of every possible prohibition. In case of doubt, we suggest that you check with counsel as to any particular questionable documents.

The following documents issued by the United States/Canadian Government or any of its Agencies may not be copied:

- Money
- Bonds or other certificates of indebtedness
- Certificates of Deposit
- Internal Revenue Stamps (canceled or uncanceled)
- Selective Service or draft papers
- Passports
- United States/Canadian Postage Stamps (canceled or uncanceled)
- Food Stamps
- Immigration Papers
- Checks or drafts drawn by Governmental agencies
- Identifying badges or insignias

Copyrighted works cannot be copied. Sections of a copyrighted work can be copied for 'fair use'. Multiple copies would indicate improper use.

Works of art should be considered the equivalent of copyrighted works.

Notice Regarding the Faithful Reproduction of Scanned Documents

After scanning a document, confirm that the accuracy and quality of the corresponding scan data meets your needs by confirming the size of the scan data, the amount of image data captured, image fidelity, color tones, etc.

Always confirm the scan data before destroying the original document.

It is possible that a portion of the scan data may be lost or damaged, therefore, read all instructions carefully and keep the following in mind.

- Depending on the condition of the document, the document may become worn thin, distorted, dirty, or cracked during scanning. In this case, some or all of the scan data may be lost.

Confirm that the document has no wrinkles, bends, or holes.

- If the inside of the machine is dirty, the document may become worn thin, distorted, dirty, or cracked during scanning. In this case, some or all of the scan data may be lost.

Clean the inside of the machine carefully and regularly.

- The following may occur depending on the scan settings, such as document size, scanning resolution, color-related settings, single-side or double-side scanning settings, auto deskew, blank page skip, etc.

- Text may be illegible or unclear if image resolution is too low.
- Scan data of a color document may be captured in black-and-white.
- Only one side of a two-sided document may be captured.
- A portion of the document may not be scanned, or the size may be too small.
- The document may only be scanned up to a certain point, after which scan data will be lost.
- Blank pages may not be deleted, or pages may be deleted unnecessarily.
- Margins may be added to the edges of the scan data.

Refer to the User's Guide for information about how to configure the scan settings.

- Depending on the condition of the document (such as if it has wrinkles, bends, or holes) and consumables, multiple pages of a document may be fed at once, causing some pages to be missing from the scanned data.

Confirm that the document has no wrinkles, bends, or holes.

Replace all consumables (rollers) periodically.

- When scanning documents that are not within the recommended guidelines, or depending on the condition of the document (such as if it has wrinkles, bends, or holes), consumables, or the paper feeding mechanisms inside the machine, documents may become jammed inside the machine during scanning. In this case, some or all of the scan data may be lost. (Documents may be destroyed as a result of a paper jam.)

Refer to “Acceptable Documents” in the User’s Guide for information about acceptable documents.

- When scanning documents that have been marked with a fluorescent marker, marked areas may not be seen properly in the scan data, or the marker color may not be reproduced properly, depending on the color and density of the marker ink.

You may achieve more desirable results by increasing the scanning resolution. Refer to the User’s Guide for information about resolution settings.

brother

Visit us on the World Wide Web
<http://www.brother.com/>



www.brotherearth.com