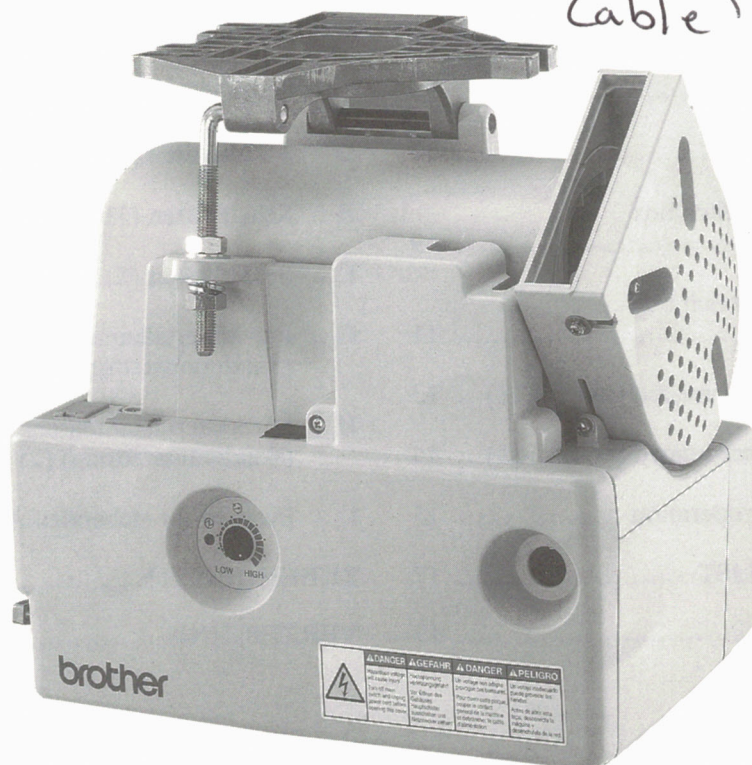


AC SERVOMOTOR
AC-SERVOMOTOR
SERVOMOTEUR AC
SERVOMOTOR DE AC

MD-601 (Single-Phase Type)
MD-611 (Three-Phase Type)

PARTS BOOK
TEILEKATALOG
LIVRE DES PIECES
LIBRO DE REFERENCIA DE PIEZAS

Cover J02499001
Plug J02496001
Pedal (3wv.) J80380040
Cable ↑ J02496001



Notes for using this parts book

1. If the symbol * is found in the "Parts No." column of the "Assembly No." column, refer to the different parts list on page 17.
2. The symbol - - - in the "Parts No." column indicates that the parts is not available for supply. If, however, there is a number in the "Assembly No." column, the parts can be ordered as an assembly. Please, therefore, order by using the assembly number.
3. This book was prepared based on information available in March 1997.
4. Parts are subject to changes in design without prior notice.

Hinweise zur Verwendung dieser Teileliste

1. Dieses Zeichen * in der Spalte "Parts No. (Teilnummer)" oder "Assembly No. (Gerätesatznummer)" verweist auf die Gesonderte Stückliste auf Seite 17.
2. Dieses Zeichen - - - in der Spalte "Teilnummer" bedeutet, daß dieser Teil nicht lieferbar ist. Wenn jedoch in der Spalte "Gerätesatznummer" eine Nummer steht, kann dieser Teil als ein Geräteteilsatz bestellt werden. Bestellen Sie daher bitte mit dieser Gerätesatznummer.
3. Dieses Buch basiert auf den Informationen vom März 1997.
4. Modelländerungen sind vorbehalten.

CONTENTS

A . Motor mechanism	1
B . Safety cover	3
C . Control box (1)	5
D . Control box (2)	7
E . Operation panel, switch box mechanism (1)	9
F . Operation panel, switch box mechanism (2)	11
G . Material edge sensor related (option) (1) ..	13
H . Material edge sensor related (option) (2) ..	14
I . Pedal for standing operation	15
DIFFERENT PARTS LIST	17
INDEX	19

INHALTSVERZEICHNIS

A . Motors	1
B . Sicherheitsdeckung	3
C . Schaltkasten (1)	5
D . Schaltkasten (2)	7
E . Schaltkasten (1)	9
F . Schaltkasten (2)	11
G . Für Materialkantensensor (Sonderausstattung) (1)	13
H . Für Materialkantensensor (Sonderausstattung) (2)	14
I . Fusstritt für stehenden Arbeitsplatz	15
ZUBEHÖRLISTE	17
VERZEICHNIS	19

Notes sur l'utilisation de ce manuel de pièces détachées


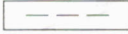

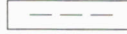
1. Si le symbole  se trouve dans la colonne "Parts No. (N° de pièce)" ou dans la colonne "Assembly No. (N° jeu de pièces)", veuillez vous référer à la liste de pièces annexe page 17.
2. Le symbole  dans la colonne "N° de pièce" signifie que la pièce ne peut être fournie. Si, dans la colonne "N° jeu de pièces", il y a un numéro de nomenclature, la pièce peut être commandée comme faisant partie d'un jeu de pièces. Donc, pour toute commande, veuillez spécifier le n° du jeu de pièces.
3. Ce manuel a été fait d'après les renseignements valables au mois de Mars 1997.
4. Les pièces peuvent être sujettes à des modifications sans préavis.

TABLE DES MATIERES

A . Mécanisme du moteur	1
B . Couvercle de sécurité	3
C . Mécanisme du boîtier de contrôle (1)	5
D . Mécanisme du boîtier de contrôle (2)	7
E . Boîtier d'interrupteurs (1)	9
F . Boîtier d'interrupteurs (2)	11
G . Capteur de bord de tissu relatif (en option) (1)	13
H . Capteur de bord de tissu relatif (en option) (2)	14
I . Pédale pour opération en station debto	15
LISTE DES PIECES ACCESSOIRES	17
INDEX	19

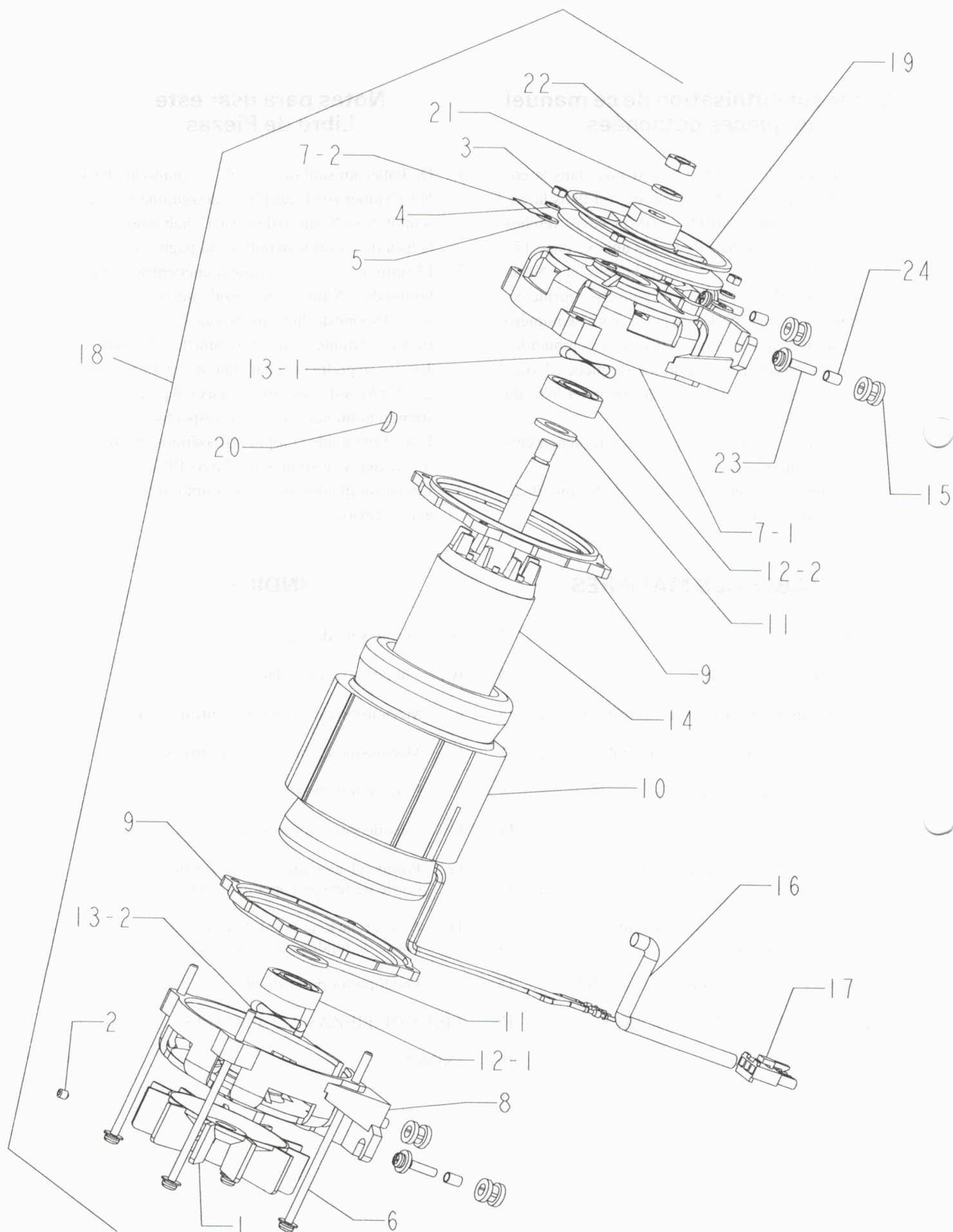
Notas para usar este Libro de Piezas

1. De haber un símbolo  junto al "Parts No. (Número de Pieza)" o en la columna del "Assembly No. (Número de juego)", habrá que mirar la lista de piezas separada de la página 17.
2. El símbolo , que se encuentra en la columna del "Número de Pieza", quiere decir que no se dispone de dicha pieza sola. Cuando, empero, hay un número en la columna del "Número de Juego", se podrá ordenar la pieza con todo el juego. Por lo tanto, será mejor hacer el pedido recurriendo al número del juego respectivo.
3. Este libro ha sido compilado basándose en los datos de que se disponía en Marzo 1997.
4. Las piezas quedan sujetas a cambios de diseño sin aviso previo.

INDICE

A . Mecanismo del motors	1
B . Cubierta de seguridad	3
C . Mecanismo de la caja de controles (1)	5
D . Mecanismo de la caja de controles (2)	7
E . Caja de interruptores (1)	9
F . Caja de interruptores (2)	11
G . Piezas relacionadas al detector de borde de tejidos (opcional) (1)	13
H . Piezas relacionadas al detector de borde de tejidos (opcional) (2)	14
I . Pedal para operar de pie	15
LISTA DE PIEZAS ACCESORIAS	17
INDICE	19

A. Motor mechanism / Motors /
Mécánisme du moteur / Mecanismo del motors



REF. NO.	CODE	Q' TY	NAME OF PARTS	REF. NO.	CODE	Q' TY	NAME OF PARTS
1	J02525-001	1	MOTOR FAN	13-1	*	1	WAVE WASHER
2	014500-632	1	SCREW 5X6	13-2	*	1	WAVE WASHER
3	021500-205	4	NUT 2-5	14	*	1	ROTOR
4	028050-245	4	SPRING WASHER 2-5	15	J02991-001	4	RUBBER WASHER, INV
5	025050-335	4	PLAIN WASHER 5	16	J02563-001	1	TUBE 8X0.25X200
6	*	4	SCREW 5XL	17	J02560-001	1	3P PLUG 3191-03R1BL
7-1	J02534-001	1	MOTOR BRACKET	18	*	1	INV MOTOR ASSY
7-2	---	1	NAME PLATE	19	*	1	TAPER PULLEY
8	*	1	MOTOR BRACKET	20	216205-000	1	KEY 4X13#2
9	J02536-001	2	STATOR INSULATION	21	028100-246	1	SPRING WASHER 2-10
10	*	1	STATOR ASSY	22	J02493-001	1	NUT 3-10X1.0
11	J02997-001	2	WASHER 2.6X15X26ST	23	J02992-001	4	SCREW 5X25DC
12-1	076202-801	1	BEARING 6202ZZ #2	24	J02989-001	4	COLLAR 5.1X0.6X9
12-2	*	1	BEARING 6202				

DIFFERENT PARTS LIST (for B737 etc , LOCK)

REF. NO.	NAME OF PARTS	MD-601 , MD-611 110V~240V		MD-611 380V~415V	
		B737 etc	LOCK	B737 etc	LOCK
6	SCREW 5X115DB	J02537-001			
8	MOTOR BRACKET	J02534-001			
10	STATOR ASSY	J80654-001	J80654-002	J80656-001	J80656-002
12-2	BEARING 6202ZZ #2	076202-801			
13-1	WAVE WASHER	203684-001			
13-2	WAVE WASHER	---			
14	ROTOR	J02518-001			
18	INV MOTOR ASSY	J80643-001	J80643-002	J80652-001	J80652-002
	90	J02278-001	---	J02278-001	---
19	TAPER PULLEY 105	J02281-001			

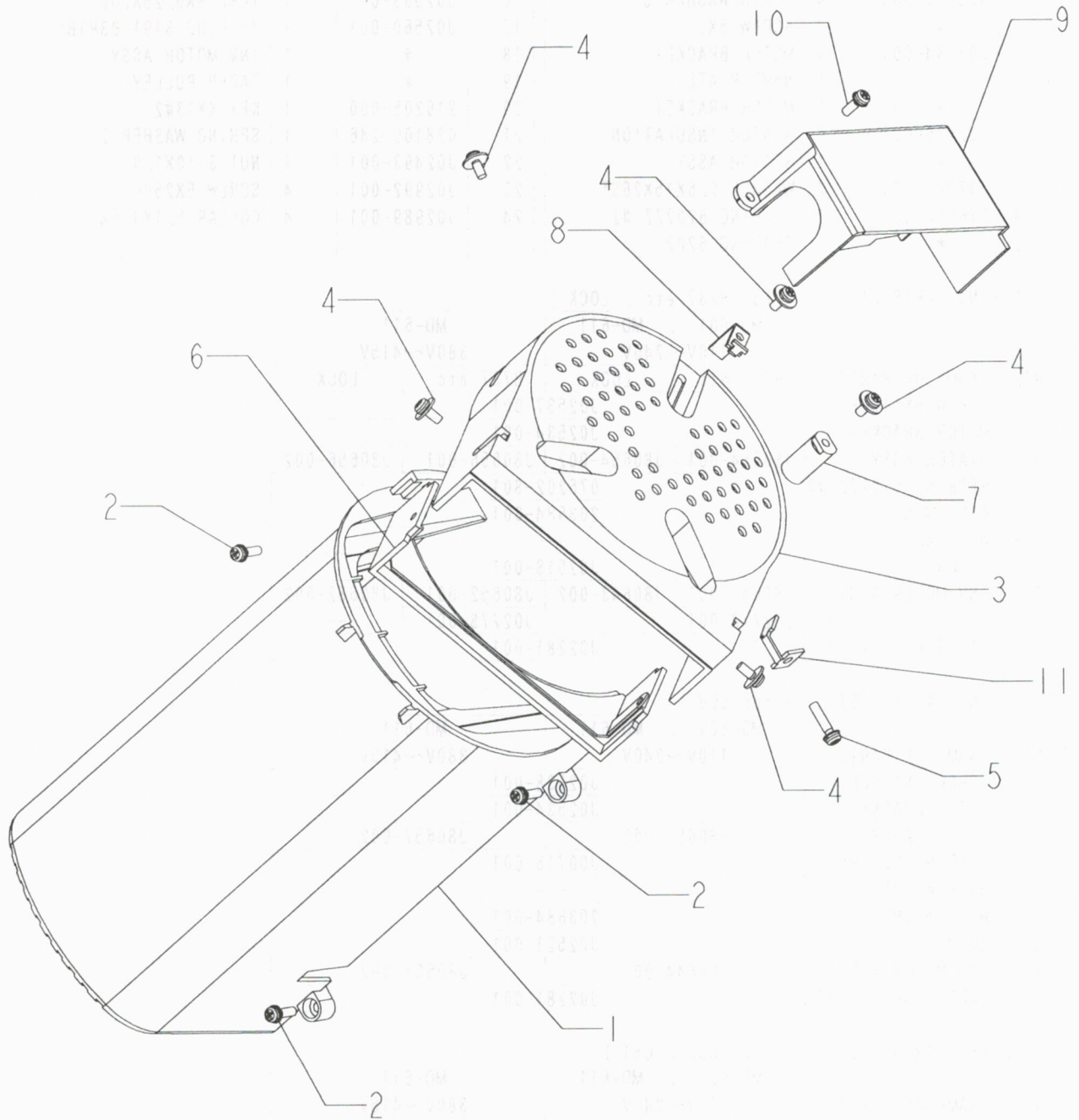
DIFFERENT PARTS LIST (for COV)

REF. NO.	NAME OF PARTS	MD-601 , MD-611 110V~240V		MD-611 380V~415V	
		B737 etc	LOCK	B737 etc	LOCK
6	SCREW 5X135DB	J02538-001			
8	MOTOR BRACKET	J02534-001			
10	STATOR ASSY	J80655-002		J80657-002	
12-2	BEARING 6202VV	J00715-001			
13-1	WAVE WASHER	---			
13-2	WAVE WASHER	203684-001			
14	ROTOR	J02521-001			
18	INV MOTOR ASSY	J80644-002		J80653-002	
19	TAPER PULLEY 105	J02281-001			

DIFFERENT PARTS LIST (for B883 , C51)

REF. NO.	NAME OF PARTS	MD-601 , MD-611 110V~240V		MD-611 380V~415V	
		B737 etc	LOCK	B737 etc	LOCK
6	SCREW 5X115DB	J02537-001			
8	MOTOR BRACKET	J02534-001			
10	STATOR ASSY	J80654-001		J80656-001	
12-2	BEARING 6202ZZ #2	076202-801			
13-1	WAVE WASHER	203684-001			
13-2	WAVE WASHER	---			
14	ROTOR	J02518-001			
18	INV MOTOR ASSY	J80643-001		J80652-001	
19	TAPER PULLEY 90	J02278-001			

B. Safety cover / Sicherheitsdeckung /
Couvercle de sécurité / Cubierta de seguridad



REF. NO.	CODE	Q' TY	NAME OF PARTS	REF. NO.	CODE	Q' TY	NAME OF PARTS
1	J02513-001	1	MOTOR COVER	7	J02293-001	1	FINGER GUARD
2	J00494-001	3	SCREW 4X14DA	8	J00351-001	1	BELT CLAMP PLATE 2
3	J02515-001	1	BELT COVER	9	J02508-001	1	D-CORD COVER
4	224508-001	5	SCREW 4X10DC	10	215082-001	1	SCREW 4X12DA
5	*	1	SCREW 4XL	11	*	1	BELT COVER STOPPER
6	J02516-001	1	BELT SUB COVER				

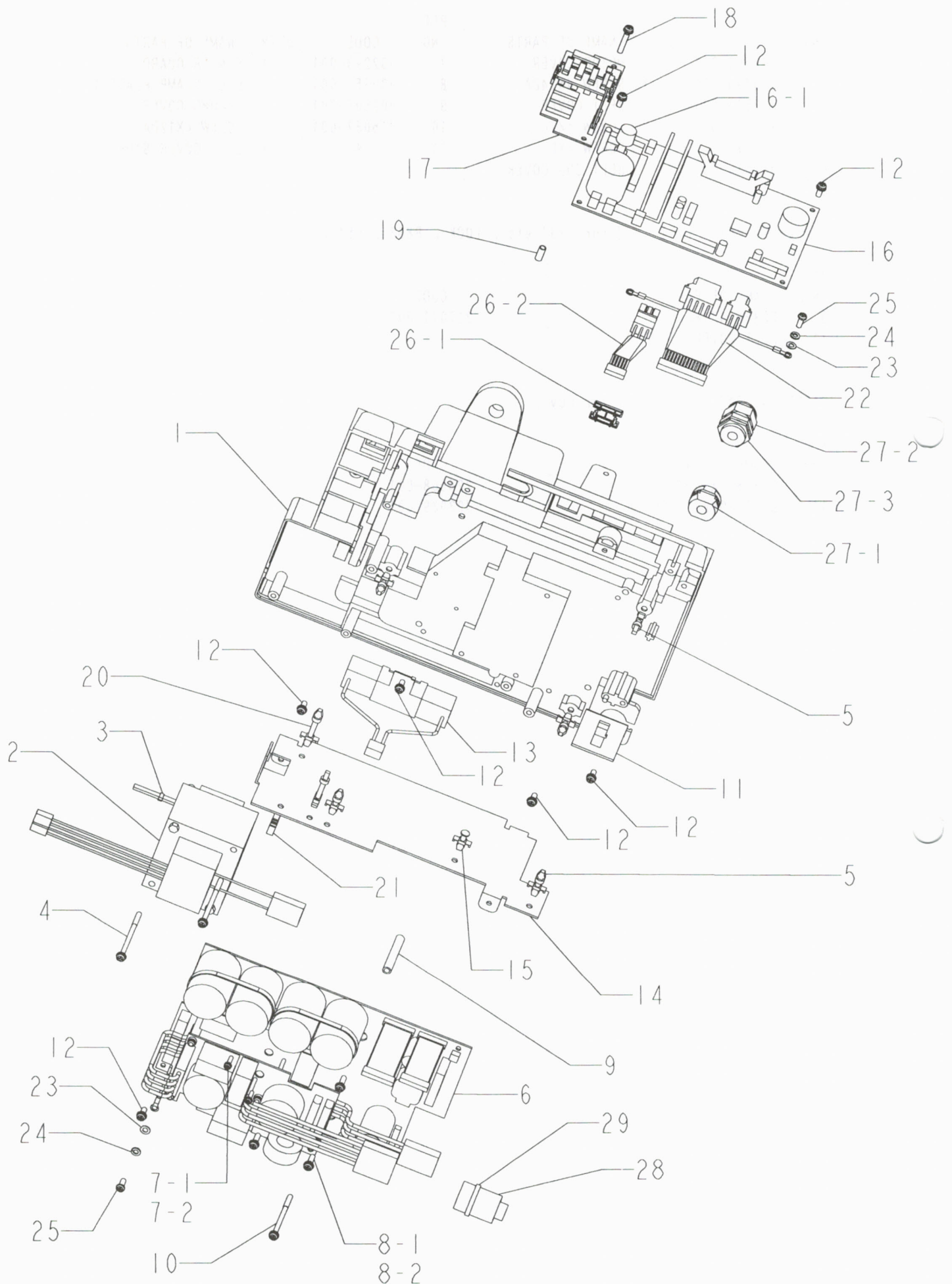
DIFFERENT PARTS LIST (for B737 etc , LOCK , B883 , C51)

REF. NO.	NAME OF PARTS	CODE
5	SCREW 4X18DA	217071-001
11	BELT COVER STOPPER	---

DIFFERENT PARTS LIST (for COV)

REF. NO.	NAME OF PARTS	CODE
5	SCREW 4X10DC	224508-001
11	BELT COVER STOPPER	J03039-001

C. Control box (1) / Schaltkasten (1) / Mécanisme du boîtier de contrôle (1) /
 Mecanismo de la caja de controles (1)



REF. NO.	CODE	Q' TY	NAME OF PARTS	REF. NO.	CODE	Q' TY	NAME OF PARTS
1	J02998-001	1	UPPER BOX	16-1	J01778-001	1	VR CONTROL KNOB
2	*	1	TRANSFORMER	17	*	1	IMS-ASSY-SUB
3	*	1	TYING BAND 2. 2X85	18	*	1	SCREW 4X25DA
4	*	2	SCREW 4XL	19	*	1	COLLAR 4. 1X12. 5
5	228295-001	5	HOLDER KGLS-6S	20	*	2	HOLDER KGLS-14S
6	*	1	IMP-ASSY	21	UG4163-000	1	WIRE SADOLE
7-1	*	1	SCREW 4X14DA	22	*	1	MAIN CONNECTOR
7-2	*	2	SCREW 3X12DA	23	025040-173	2	PLAIN WASHER 4
8-1	*	2	SCREW 4X10DA	24	028040-245	2	SPRING WASHER 2-4
8-2	*	3	SCREW 4X14DA	25	062401-063	2	SCREW 4X10
9	*	1	COLLAR 7X45-M4	26-1	*	1	NBN PLUG CAP
10	*	1	SCREW 4X55DA	26-2	*	1	NBN CONNECTOR
11	*	1	PLUG HOLDER	27-1	*	1	BUSSING SR-7K-2
12	229017-001	7	SCREW 4X10DA	27-2	*	1	BUSSING STR13. 5
13	*	1	RESIST.	27-3	*	1	NUT SM13. 5
14	J02029-001	1	CIRCUIT UNIT HOLDER	28	*	1	EMC FERRITE CORE
15	J01892-001	1	HOLDER KGPS-6S	29	*	1	TYING BAND 3. 5X150
16	*	1	IMS-ASSY				

DIFFERENT PARTS LIST

REF. NO.	NAME OF PARTS	MD-601 110V	MD-601 220V-240V	MD-601 230V CE	MD-611 220V	MD-611 380V-415V	MD-611 400V CE
2	TRANSFORMER	J02502-001	J02503-001		J02664-001	J03127-001	
3	TYING BAND 2. 2X85	220681-001		---	220681-001		---
4	SCREW 4XL		J02062-001			J02514-001	
7-1	SCREW 4X14DA	J00494-001			---		
7-2	SCREW 3X12DA	---			0A4301-205		
8-1	SCREW 4X10DA		229017-001			---	
8-2	SCREW 4X14DA		---			J00494-001	
9	COLLAR 7X45-M4		---			J03125-001	
10	SCREW 4X55DA		---			J02062-001	
11	PLUG HOLDER		J02505-001			J02506-001	
13	RESIST.		J02470-001			J02628-001	
27-1	BUSSING SR-7K-2	J02195-001		---	J02195-001		---
27-2	BUSSING STR13. 5	---		J03137-001	---		J03137-001
27-3	NUT SM13. 5	---		J03138-001	---		J03138-001

DIFFERENT PARTS LIST (for B737 etc , LOCK , B883 , C51)

REF. NO.	NAME OF PARTS	MD-601 110V	MD-601 220V-240V	MD-601 230V CE	MD-611 220V	MD-611 380V-415V	MD-611 400V CE
6	IMP-ASSY	J80634-001	J80635-001	J80636-001	J80637-001	J80690-001	J80691-001
28	EMC FERRITE CORE			---			
29	TYING BAND 3. 5X150			---			

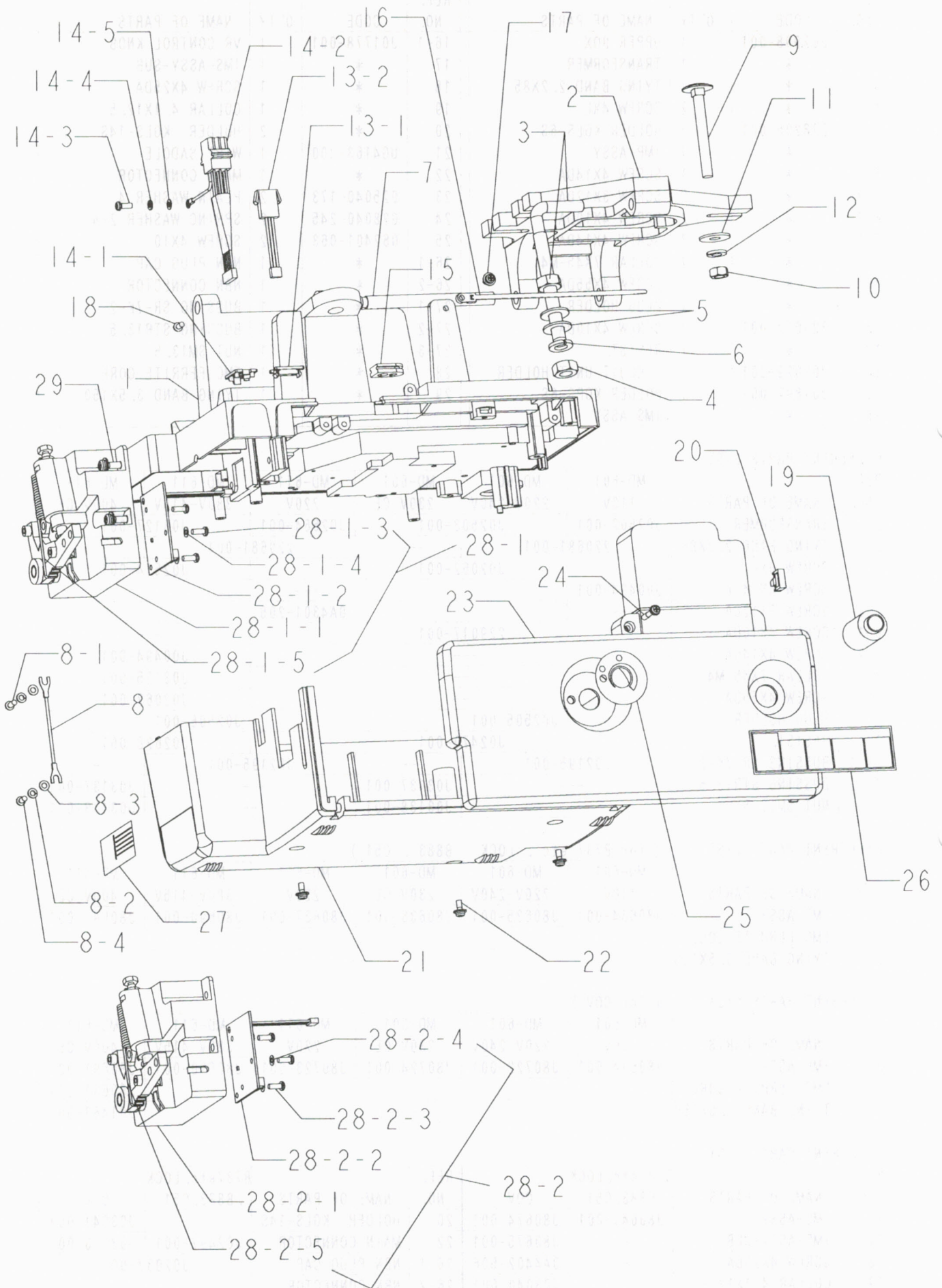
DIFFERENT PARTS LIST (for COV)

REF. NO.	NAME OF PARTS	MD-601 110V	MD-601 220V-240V	MD-601 230V CE	MD-611 220V	MD-611 380V-415V	MD-611 400V CE
6	IMP-ASSY	J80634-001	J80722-001	J80724-001	J80723-001	J80690-001	J80691-001
28	EMC FERRITE CORE			---			J80631-001
29	TYING BAND 3. 5X150			---			J01463-001

DIFFERENT PARTS LIST

REF. NO.	NAME OF PARTS	B737etc, LOCK , B883, C51	COV	REF. NO.	NAME OF PARTS	B737etc, LOCK , B883, C51	COV
16	IMS-ASSY	J80641-001	J80674-001	20	HOLDER KGLS-14S	---	J03041-001
17	IMS-ASSY-SUB	---	J80675-001	22	MAIN CONNECTOR	J02497-001	J03053-001
18	SCREW 4X25DA	---	0A4402-506	26-1	NBN PLUG CAP	J02037-001	
19	COLLAR 4. 1X12. 5	---	J03040-001	26-2	NBN CONNECTOR	---	

D. Control box (2) / Schaltkasten (2) / Mécanisme du boîtier de contrôle (2) / Mecanismo de la caja de controles (2)



REF. NO.	CODE	Q' TY	NAME OF PARTS	REF. NO.	CODE	Q' TY	NAME OF PARTS
1	J02998-001	1	UPPER BOX	17	215081-001	1	SCREW 4X10DB
2	J00107-001	1	MD806 BASE #2	18	002400-806	1	SCREW 4X8
3	210965-081	1	BOLT(L) 10 ASSY	19	*	1	EMC FERRITE CORE
4	021100-206	1	NUT 2-10	20	*	1	WIRE SADOLE
5	025100-236	2	PLAIN WASHER 10	21	J02027-001	1	LOWER BOX
6	028100-246	1	SPRING WASHER 2-10	22	215081-001	3	SCREW 4X10DB
7	J02517-001	1	PIN 9. 9X116	23	*	1	BOX COVER
8	J02832-001	1	EARTH CORD ASSY	24	J02568-001	1	SCREW 4X25DA
8-1	062401-063	1	SCREW 4X10	25	*	1	VR LABEL
8-2	028040-245	2	SPRING WASHER 2-4	26	S38352-001	1	WARNING LABEL
8-3	025040-173	2	PLAIN WASHER 4	27	---	1	NAME PLATE
8-4	062400-863	1	SCREW 4X8	28-1	J80639-001	1	TREADLE UNIT DOMES.
9	222372-001	3	BOLT 8X70	28-1-1	J01930-001	1	TREADLE BASE ASSY
10	021080-206	3	NUT 2-8	28-1-2	J80640-001	1	PS CIRCUIT BOARD
11	025080-336	3	PLAIN WASHER 8	28-1-3	037401-015	3	SCREW 4X10
12	028080-246	3	SPRING WASHER 2-8	28-1-4	J02130-001	3	SPRING WASHER 03X4. 3
13-1	*	1	MVR PLUG CAP	28-1-5	J00649-001	1	SPRING
13-2	*	1	MVR CONNECTOR	28-2	J80638-001	1	TREADLE UNIT EXPORT.
14-1	*	1	FOOT PLUG CAP	28-2-1	J01945-001	1	TREADLE BASE ASSY
14-2	*	1	FOOT CONNECTOR	28-2-2	J80640-001	1	PS CIRCUIT BOARD
14-3	*	1	SCREW 4X10	28-2-3	037401-015	3	SCREW 4X10
14-4	*	1	SPRING WASHER 2-4	28-2-4	J02130-001	3	SPRING WASHER 03X4. 3
14-5	*	1	PLAIN WASHER 4	28-2-5	J00649-001	1	SPRING
15	J02036-001	1	CORD BUSH	29	J00353-001	3	SCREW 5X14DB
16	J03033-001	1	TYING BAND T30MR				

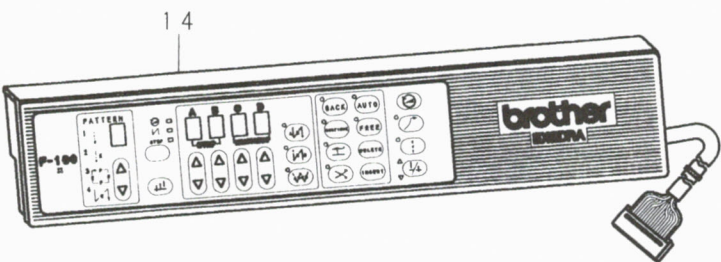
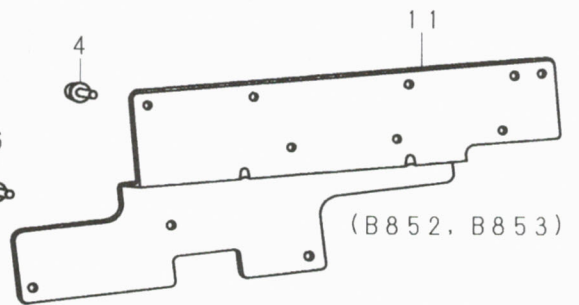
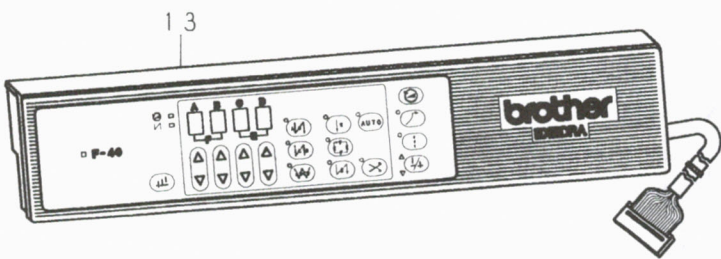
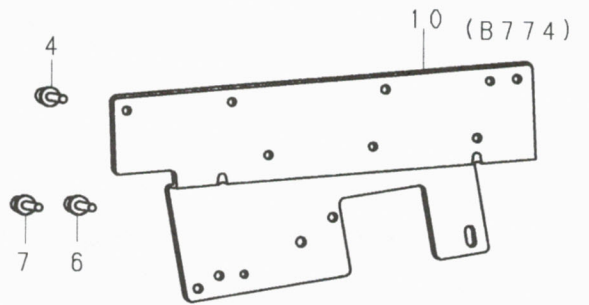
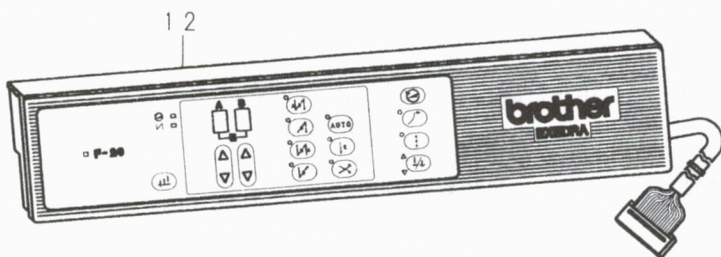
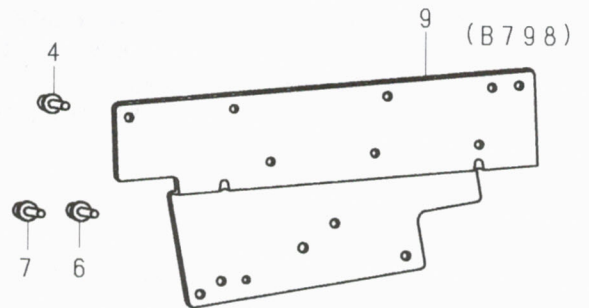
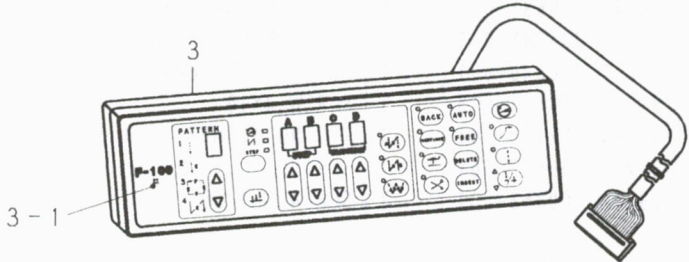
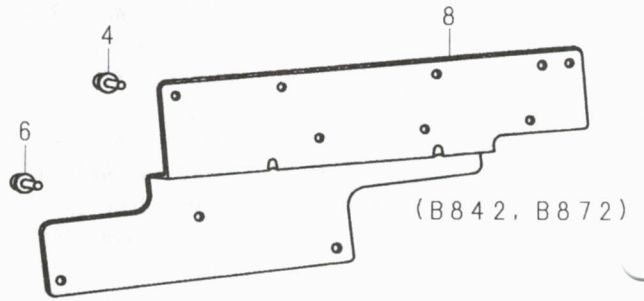
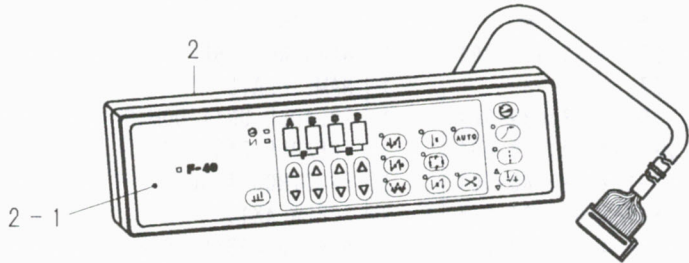
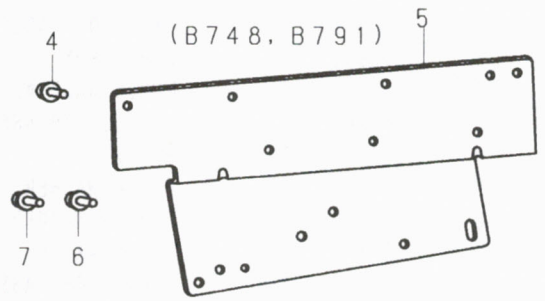
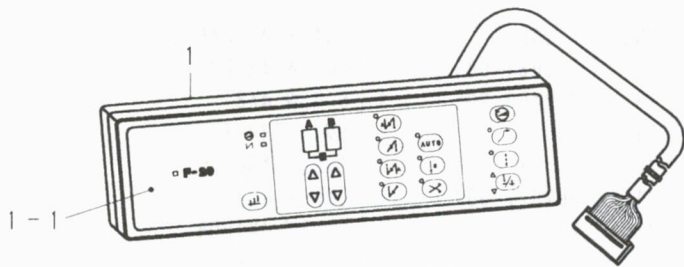
DIFFERENT PARTS LIST

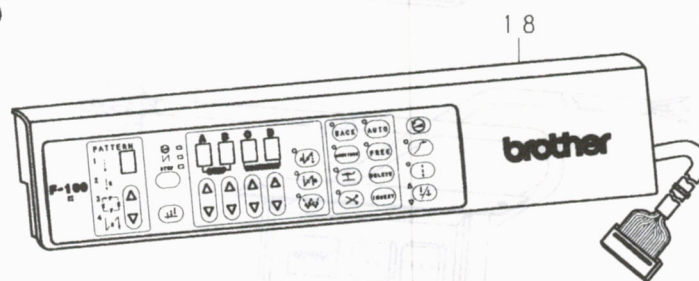
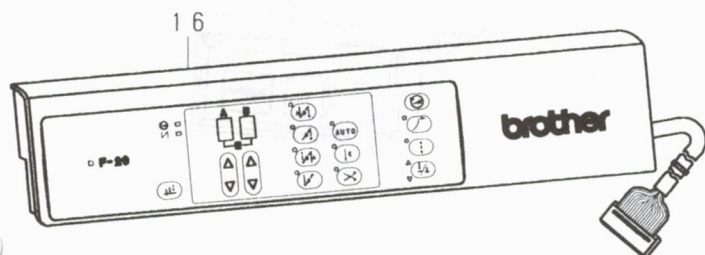
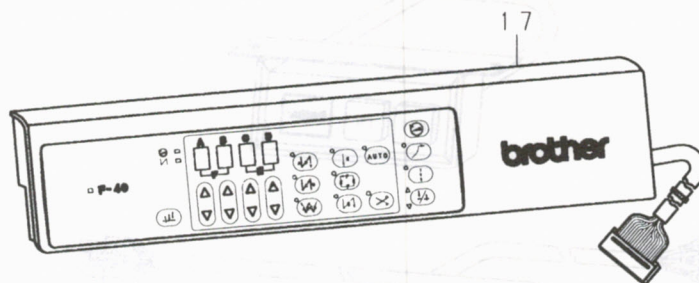
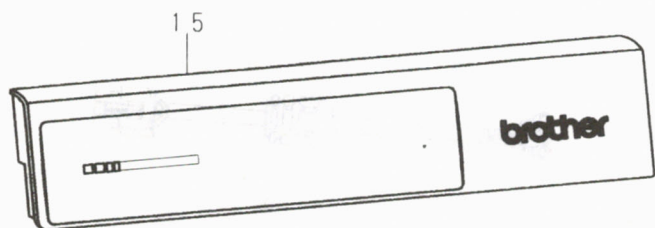
REF. NO.	NAME OF PARTS	B737etc, LOCK, B883, C51		COV	
		STANDARD	for Canada	110V-415V	230V CE, 400V CE
19	EMC FERRITE CORE		---		J80631-001
20	WIRE SADOLE		---	UG4163-000	
23	BOX COVER	J02028-001	J02955-001	J03044-001	
25	VR LABEL	J02501-001		J03045-001	

DIFFERENT PARTS LIST

REF. NO.	NAME OF PARTS	STANDARD	OPTION
13-1	MVR PLUG CAP	J02038-001	---
13-2	MVR CONNECTOR	---	J02495-001
14-1	FOOT PLUG CAP	J02039-001	---
14-2	FOOT CONNECTOR	---	J02496-001
14-3	SCREW 4X10	---	062401-063
14-4	SPRING WASHER 2-4	---	028040-245
14-5	PLAIN WASHER 4	---	025040-173

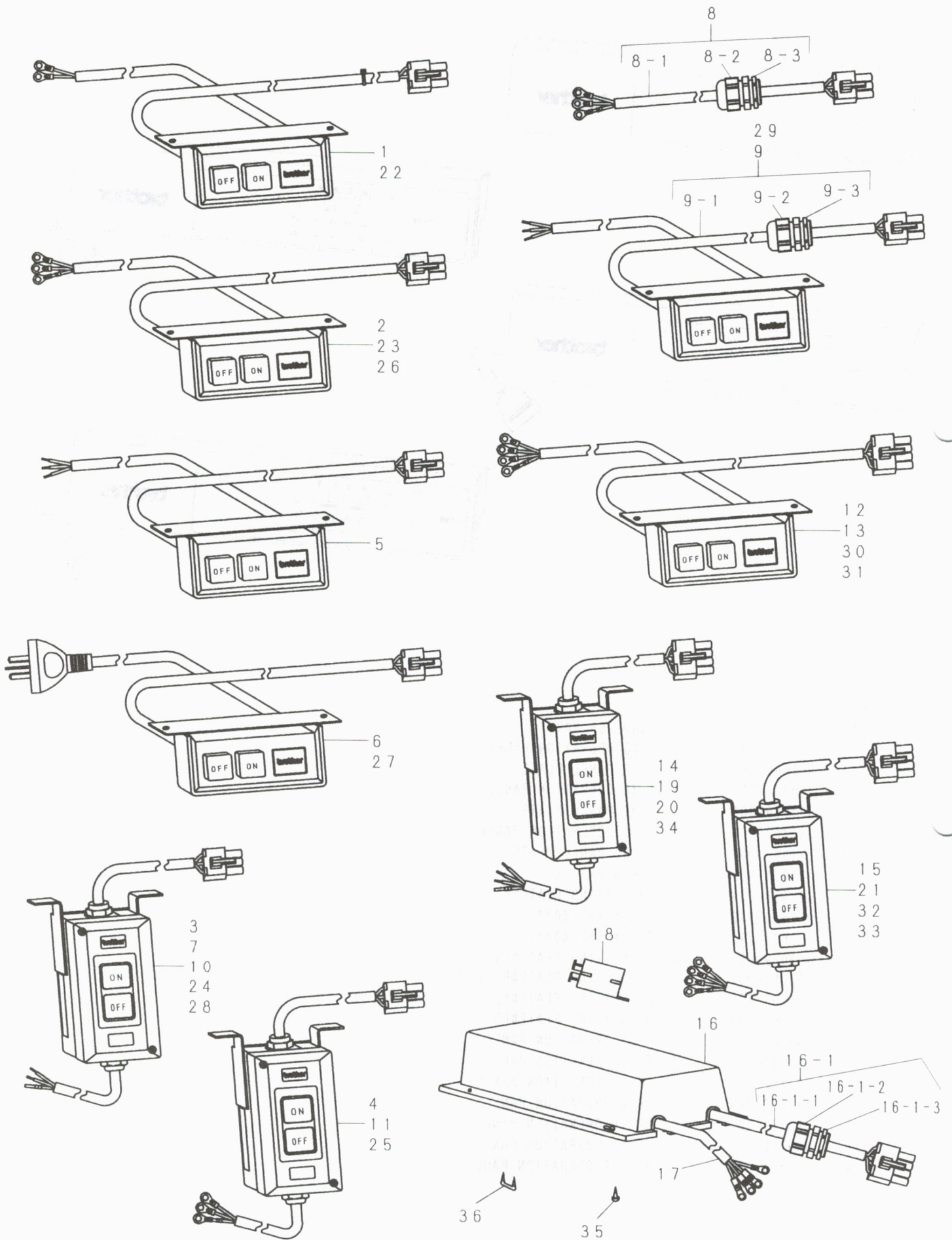
E. Operation panel, switch box mechanism (1) / Schaltkasten (1) /
Boîtier d'interrupteurs (1) / Caja de interruptores (1)





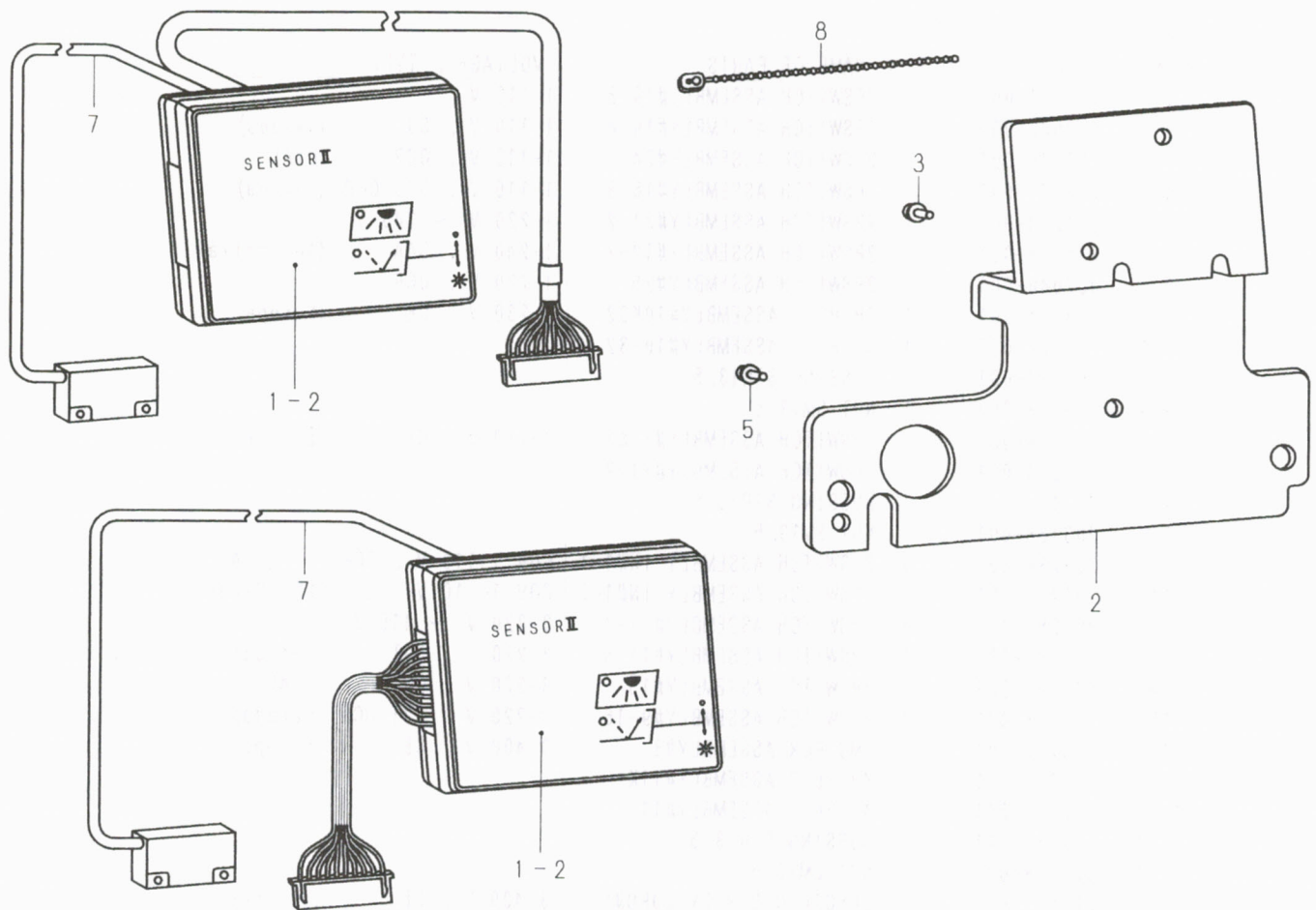
REF. NO.	CODE	Q' TY	NAME OF PARTS
1	J80748-001	1	F-20 OPERATION PANEL
1-1	J01990-001	1	F-20 PANEL PLATE
2	J80747-001	1	F-40 OPERATION PANEL
2-1	J01989-001	1	F-40 PANEL PLATE
3	J80753-001	1	F-100 OPERATION PANEL
3-1	J01988-001	1	F-100 PANEL PLATE
4	215081-002	3	SCREW 4X10DB
5	J02058-001	1	HB-SETTING PLATE#F1
6	062681-212	3	SCREW 437-40X12
7	062671-212	3	SCREW 357-40X12
8	J02059-001	1	HB-SETTING PLATE#F3
9	J02054-001	1	HB-SETTING PLATE#F1-2
10	J02566-001	1	HB-SETTING PLATE#F2
11	J02567-001	1	HB-SETTING PLATE#F5
12	J80745-001	1	F-20 OPERATION PANEL
13	J80744-001	1	F-40 OPERATION PANEL
14	J80752-001	1	F-100 OPERATION PANEL
15	J80633-001	1	BF-0 OPERATION PANEL
16	J80751-001	1	BF-20 OPERATION PANEL
17	J80750-001	1	BF-40 OPERATION PANEL
18	J80754-001	1	BF-100 OPERATION PANEL

F. Operation panel, switch box mechanism (2) / Schaltkasten (2) /
 Boîtier d'interrupteurs (2) / Caja de interruptores (2)



REF. NO.	CODE	Q' TY	NAME OF PARTS	VOLTAGE , TYPE
1	229240-001	1	2PSWITCH ASSEMBLY#19-3	1-110 V
2	230542-001	1	2PSWITCH ASSEMBLY#19-4	1-110 V , SJT (Canada)
3	J02045-001	1	2PSWITCH ASSEMBLY#24	1-110 V , OCR (USA)
4	237272-001	1	2PSWITCH ASSEMBLY#16-3	1-110 V , SJT OCR (Canada)
5	J01244-001	1	2PSWITCH ASSEMBLY#31-2	1-220 V ~ 240 V
6	236127-001	1	2PSWITCH ASSEMBLY#19-7	1-240 V , SAA (Australia)
7	J02046-001	1	2PSWITCH ASSEMBLY#25	1-220 V , OCR
8	J03134-001	1	3P PLUG ASSEMBLY#10K32	1-230 V , CE (Europe)
8-1	J02302-001	1	3P PLUG ASSEMBLY#10-32	
8-2	J03137-001	1	BUSSING STR13.5	
8-3	J03138-001	1	NUT SM13.5	
9	J03238-001	1	2PSWITCH ASSEMBLY#31K2	1-230 V , CE (Europe)
9-1	J01244-001	1	2PSWITCH ASSEMBLY#31-2	
9-2	J03137-001	1	BUSSING STR13.5	
9-3	J03138-001	1	NUT SM13.5	
10	J03239-001	1	2PSWITCH ASSEMBLY IN#1-1	COV 1-110 V , OCR (USA)
11	J03241-001	1	2PSWITCH ASSEMBLY IN#1-2	COV 1-110 V , SJT OCR (Canada)
12	229250-001	1	3PSWITCH ASSEMBLY#11-7	3-220 V ~ 415 V
13	230545-001	1	3PSWITCH ASSEMBLY#11-8	3-220 V , SJT (Canada)
14	J02047-001	1	3PSWITCH ASSEMBLY#15	3-220 V , OCR (USA)
15	237273-001	1	3PSWITCH ASSEMBLY#9-16	3-220 V , SJT OCR (Canada)
16	J80727-001	1	EMC BOX ASSEMBLY#3	3-400 V , CE (Europe)
16-1	J03135-001	1	4P PLUG ASSEMBLY#11K	
16-1-1	228272-001	1	4P PLUG ASSEMBLY#11	
16-1-2	J03137-001	1	BUSSING STR13.5	
16-1-3	J03138-001	1	NUT SM13.5	
17	J02678-001	1	ELECTRIC SUPPLY CORD#5	3-400 V , CE (Europe)
18	J80631-001	1	EMC FERRITE CORE	3-400 V , CE (Europe)
19	J03245-001	1	3PSWITCH ASSEMBLY IN#3-3	3-380 V , OCR (South Africa)
20	J03240-001	1	3PSWITCH ASSEMBLY IN#3-1	COV 3-220 V , OCR (USA)
21	J03242-001	1	3PSWITCH ASSEMBLY IN#3-2	COV 3-220 V , SJT OCR (Canada)
22	J00452-001	1	2PSWITCH ASSEMBLY#19-23	B883 1-110 V
23	J00455-001	1	2PSWITCH ASSEMBLY#19-24	B883 1-110 V , SJT (Canada)
24	J00453-001	1	2PSWITCH ASSEMBLY#16-12	B883 1-110 V , OCR (USA)
25	J00457-001	1	2PSWITCH ASSEMBLY#16-23	B883 1-110 V , SJT OCR (Canada)
26	J00460-001	1	2PSWITCH ASSEMBLY#19-22	B883 1-220 V ~ 240 V
27	J00464-001	1	2PSWITCH ASSEMBLY#19-27	B883 1-240 V , SAA (Australia)
28	J00462-001	1	2PSWITCH ASSEMBLY#22-11	B883 1-220 V , OCR
29	J03247-001	1	2PSWITCH ASSEMBLY#31L2	B883 1-230 V , CE (Europe)
30	J00470-001	1	3PSWITCH ASSEMBLY#11-17	B883 3-220 V ~ 415 V
31	J00473-001	1	3PSWITCH ASSEMBLY#11-18	B883 3-220 V , SJT (Canada)
32	J00471-001	1	3PSWITCH ASSEMBLY#9-21	B883 3-220 V , OCR (USA)
33	J00477-001	1	3PSWITCH ASSEMBLY#9-26	B883 3-220 V , SJT OCR (Canada)
34	J03246-001	1	3PSWITCH ASSEMBLY IN#3-4	B883 3-380 V , OCR (South Africa)
35	S03816-001	2	SCREW 4.5X16	
36	200190-001	5	STEPLE	

G. Material edge sensor related (option) (1) / Für Materialkantensensor (Sonderausstattung) (1) /
 Capteur de bord de tissu relatif (en option) (1) /
 Piezas relacionadas al detector de borde de tejidos (opcional) (1)



SENSOR 2

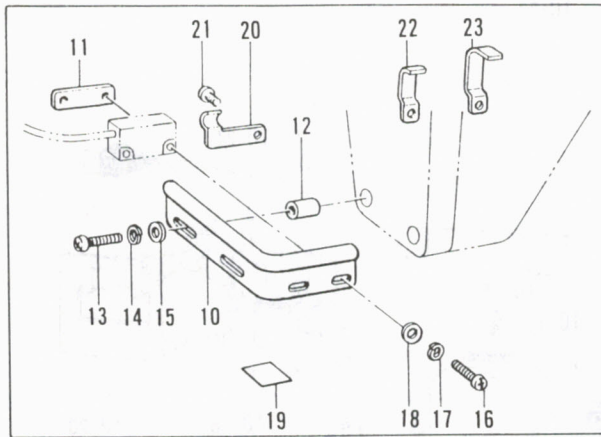
REF. NO.	MACHINE MODEL	S2 (F-20 ~ F-100)	
		NAME OF PARTS	CODE
1	B737 Mark2	SENSOR #2-2	291657-013
	B748	SENSOR #2-1	291659-011
	TWIN NEEDLE	SENSOR #2-3	291674-011
	B791	SENSOR #2-4	291640-011
	B798	SENSOR #2-6	291642-011
	B774	SENSOR #2-7	388706-011

DIFFERENT PARTS LIST

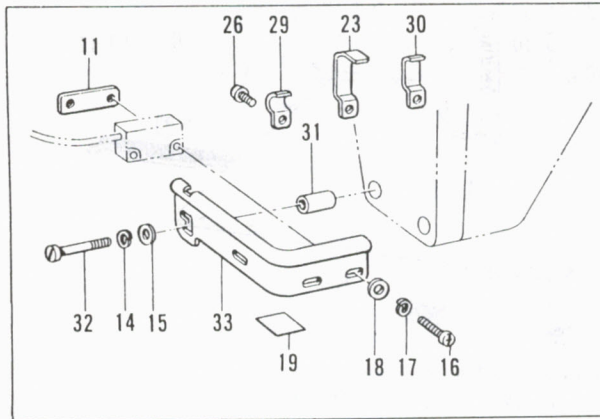
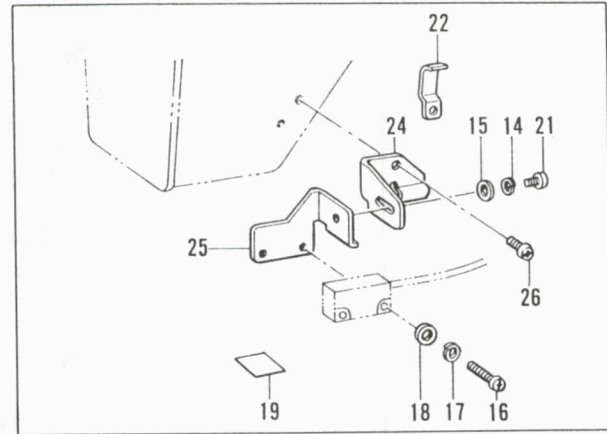
REF. NO.	MACHINE MODEL	B737 Mark2	B748	TWIN NEEDLE	B791	B798	B774
	NAME OF PARTS	SENSOR #2-2	SENSOR #2-1	SENSOR #2-3	SENSOR #2-4	SENSOR #2-6	SENSOR #2-7
1-2	EMBLEM PLATE			233268-002			
7	SENSOR CORD ASS.		233263-001		233619-001	233263-001	
3	SCREW 4X12DA			215082-002			
2	SETTING PLATE	237043-002			---		
5	SCREW 437-40X12	062681-212			---		
8	TYING BAND N-108			233501-001			

H. Material edge sensor related (option) (2) / Für Materialkantensensor (Sonderausstattung) (2) /
 Capteur de bord de tissu relatif (en option) (2) /
 Piezas relacionadas al detector de borde de tejidos (opcional) (2)

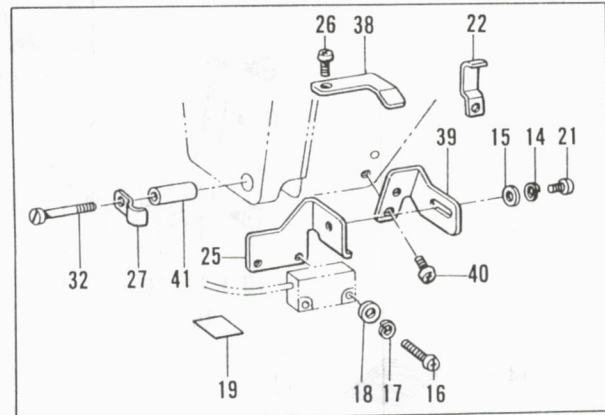
(B737 , B748)



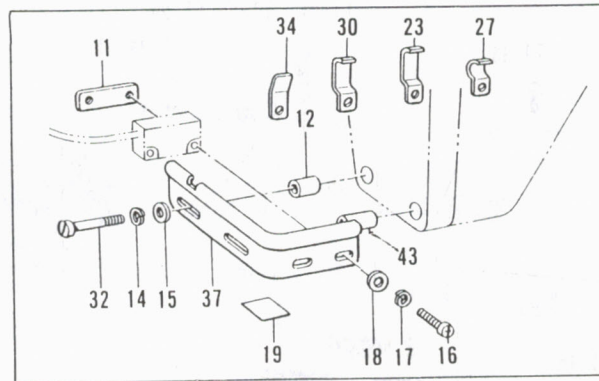
(B842 , B872)



(B791)



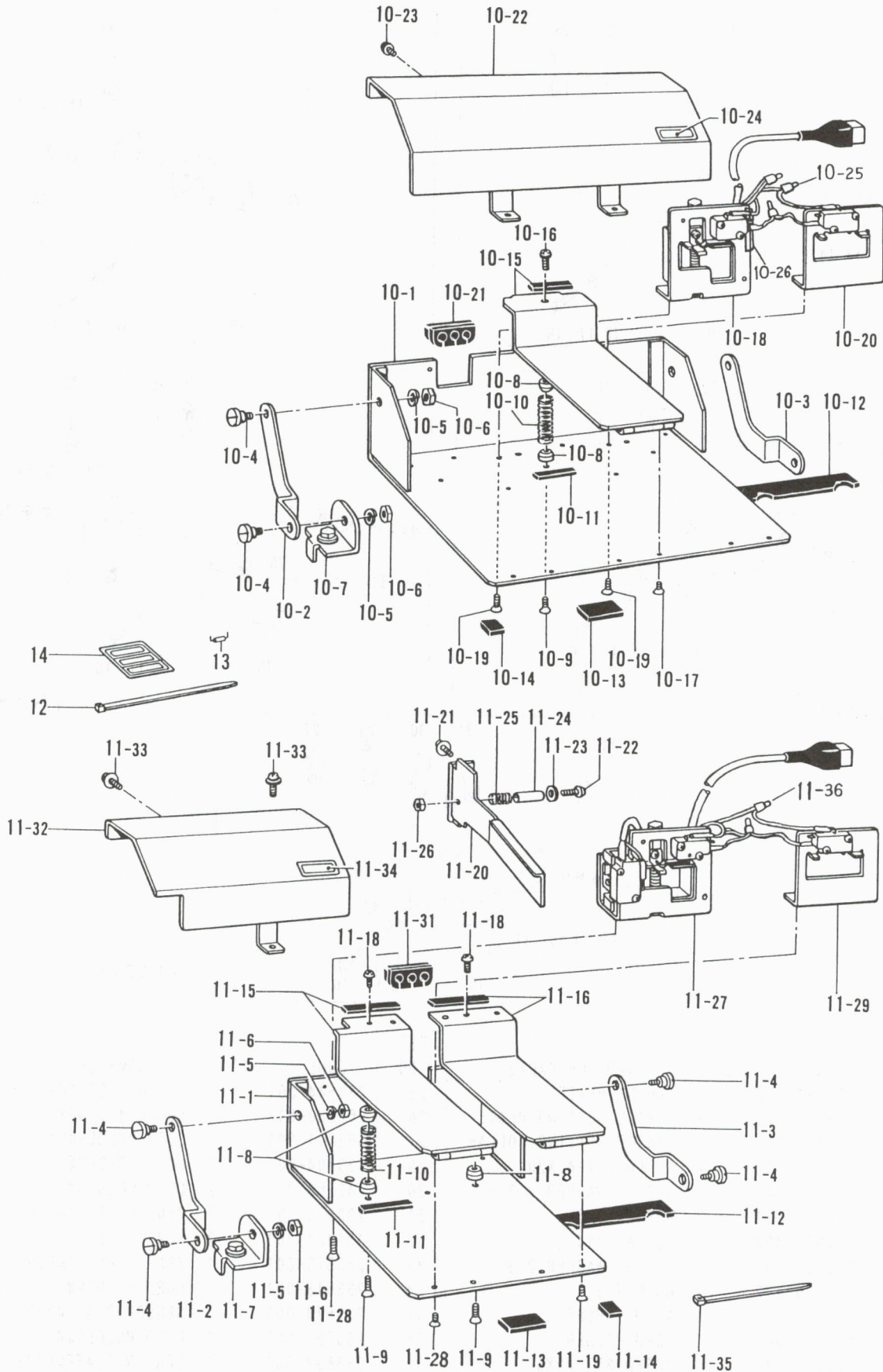
(B798)



(B774)

REF. NO.	CODE	Q' TY	NAME OF PARTS	REF. NO.	CODE	Q' TY	NAME OF PARTS
10	233091-002	1	SENSOR PLATE	25	233544-001	1	SENSOR SETTING PLATE#3
11	233092-001	1	SENSOR SETTING PLATE	26	062680-812	2	SCREW 437-40X8
12	233067-001	2	SENSOR SETTING COLLAR	27	S02701-001	2	CORD HOLDER#U1
13	062672-012	2	SCREW 357-40X20	29	233604-001	1	CORD HOLDER#2
14	028350-242	2	SPRING WASHER 2-3. 5	30	142268-001	2	CORD HOLDER#L
15	026350-132	2	WASHER 3. 5	31	233575-001	2	SENSOR SETTING COLLAR#2
16	062301-402	2	SCREW 3X14	32	151431-001	2	SCREW 3. 57
17	028030-242	2	SPRING WASHER 2-3	33	233573-001	1	SENSOR PLATE#B791
18	025030-132	2	WASHER 3	34	233618-001	1	CORD HOLDER#3
19	233063-001	1	ALUMI SHEET	37	233574-001	1	SENSOR PLATE#B793
20	233500-001	1	CORD HOLDER	38	233696-001	1	CORD HOLDER#4
21	062670-612	1	SCREW 357-40X6	39	233694-001	1	SENSOR PLATE#B798
22	S02702-001	2	CORD HOLDER#U2	40	062670-812	1	SCREW 357-40X8
23	S02703-001	2	CORD HOLDER#U3	41	233695-001	1	SENSOR SETTING COLLAR#3
24	233545-001	1	SENSOR HOLDER#A	43	236315-001	1	SENSOR COLLAR 17. 5

I. Pedal for standing operation / Fusstritt für stehenden Arbeitsplatz /
 Pédale pour opération en station debò / Pedal para operar de pie



3pedal Variable J80380040

PEDAL FOR STANDING OPERATION
(TWO SPEED TYPE)

REF. NO.	CODE	Q' TY	NAME OF PARTS
10	J80630-001	1	PEDAL ASSEMBLY 2 SPEED
10-1	233217-002	1	PEDAL BASE ASSEMBLY
10-2	233221-003	1	ARM CLAMP#L
10-3	233222-003	1	ARM CLAMP#R
10-4	233223-001	4	STUD SCREW 8X16.7
10-5	028080-242	4	SPRING WASHER 2-8
10-6	021080-302	4	NUT 8
10-7	233224-002	2	PEDAL CLAMP ASSEMBLY
10-8	233231-001	6	SPRING CUSHION#23
10-9	061401-205	3	SCREW 4X12
10-10	233233-001	3	SPRING 1. 2X12X57
10-11	233232-001	3	RUBBER PLATE1. 6X5X45
10-12	233228-001	1	RUBBER PLATE3. 2X20X286
10-13	233229-001	2	RUBBER PLATE3. 2X20X46
10-14	233230-001	2	RUBBER PLATE3. 2X20X15
10-15	233225-001	3	PEDAL ASSEMBLY
10-16	217093-001	3	SCREW 4X12D
10-17	061400-402	6	SCREW 4X4
10-18	J02949-001	1	SPEED CONTROLLER
10-19	061401-205	6	SCREW 4X12
10-20	J02950-001	2	M. SWITCH ASSEMBLY
10-21	233250-001	1	F. P BUSH
10-22	233251-003	1	PEDAL COVER
10-23	233236-001	4	SCREW 4X6DA
10-24	233488-002	1	IDENTIFICATION LABEL
10-25	J01585-001	3	FLAT CONNECTOR CE1
10-26	233516-001	1	EDGING 2. 4X40

PEDAL FOR STANDING OPERATION
(SIDE ACTION AND VARIABLE SPEED TYPE)

REF. NO.	CODE	Q' TY	NAME OF PARTS
11	J80081-040	1	PEDAL THREAD TRIM #6
11-1	238194-001	1	PEDAL BASE ASSEMBLY#5
11-2	233221-003	1	ARM CLAMP#L
11-3	233222-003	1	ARM CLAMP#R
11-4	233223-001	4	STUD SCREW 8X16.7
11-5	028080-242	4	SPRING WASHER 2-8
11-6	021080-302	4	NUT 8
11-7	233224-002	2	PEDAL CLAMP ASSEMBLY
11-8	233231-001	4	SPRING CUSHION#23
11-9	061401-205	2	SCREW 4X12
11-10	233233-001	2	SPRING 1. 2X12X57
11-11	233232-001	2	RUBBER PLATE1. 6X5X45
11-12	S14823-001	1	RUBBER PLATE3. 2X20X186
11-13	233229-001	1	RUBBER PLATE3. 2X20X46
11-14	233230-001	2	RUBBER PLATE3. 2X20X15
11-15	238186-001	1	PEDAL ASSEMBLY (SREED)
11-16	238188-001	1	PEDAL ASSEMBLY PRESSER
11-18	217093-001	1	SCREW 4X12D
11-19	061400-402	4	SCREW 4X4
11-20	238191-001	1	PEDAL TRIMMER ASS. #2
11-21	225534-001	2	SCREW 4X8DA
11-22	062402-005	1	SCREW 4X20
11-23	025040-335	1	WASHER 4
11-24	J00021-001	1	TUBE T5X12
11-25	228957-001	1	SPRING 8X30
11-26	021400-305	1	NUT 4
11-27	J01084-001	1	SPEED CONTROLLER#6
11-28	061401-205	4	SCREW 4X12
11-29	J01087-001	1	M. SWITCH ASSEMBLY
11-31	233250-001	1	F. P BUSH
11-32	238196-001	1	PEDAL COVER#5
11-33	233236-001	3	SCREW 4X6DA
11-34	J01089-001	1	IDENTIFICATION LABEL
11-35	228475-000	2	TYING BAND 1. 9X80
11-36	J00074-001	2	FLAT CONNECTOR CE2
12	233491-001	2	TYING BAND 3. 6X203
13	200190-001	4	STEPLE
14	233515-001	1	LABEL

DIFFERENT PARTS LIST / ZUBEHÖRLISTE /
LISTE DES PIÈCES ACCESSOIRES / LISTA DE PIEZAS ACCESORIAS

Machine Model		Mark 2 (B737 etc)					
Ref. No.	Sub-Class	Single Phase			Three Phase		
	Voltage (V)	110	220 ~ 240	230 CE	220	380 ~ 415	400 CE
A-18	INV Motor Assembly	J80643-001			J80652-001		
A-19	Taper Pulley	J02278-001					
	Q90	J02281-001					
C-6	Power Circuit Unit	J80634-001	J80635-001	J80636-001	J80637-001	J80690-001	J80691-001
C-16	Control Circuit Unit	J80641-001					
F-1~ F-34	Switch Assembly	229240-001	J01244-001	J03134-001	229250-001		J80727-001 (EMC BOX) +
		J02045-001 (USA)	J02046-001 (OCR)	(3P Plug Assy)	J02047-001 (USA)	J03245-001 (OCR)	
		230542-001 (Canada)	236127-001 (Australia)	J03238-001	230545-001 (Canada)	---	J80631-001 (EMC CORE)
		237272-001 (Canada, OCR)			237273-001 (Canada, OCR)		

Machine Model		Overlock (B5**, V**)					
Ref. No.	Sub-Class	Single Phase			Three Phase		
	Voltage (V)	110	220 ~ 240	230 CE	220	380 ~ 415	400 CE
A-18	INV Motor Assembly	J80643-002			J80652-002		
A-19	Taper Pulley	J02281-001					
	Q105						
C-6	Power Circuit Unit	J80634-001	J80635-001	J80636-001	J80637-001	J80690-001	J80691-001
C-16	Control Circuit Unit	J80641-001					
F-1~ F-34	Switch Assembly	229240-001	J01244-001	J03134-001	229250-001		J80727-001 (EMC BOX) +
		J02045-001 (USA)	J02046-001 (OCR)	(3P Plug Assy)	J02047-001 (USA)	J03245-001 (OCR)	
		230542-001 (Canada)	236127-001 (Australia)	J03238-001	230545-001 (Canada)	---	J80631-001 (EMC CORE)
		237272-001 (Canada, OCR)			237273-001 (Canada, OCR)		

Machine Model		C51, C53 (PWB)					
Ref. No.	Sub-Class	Single Phase			Three Phase		
	Voltage (V)	110	220 ~ 240	230 CE	220	380 ~ 415	400 CE
A-18	INV Motor Assembly	J80643-001			J80652-001		
A-19	Taper Pulley	J02278-001					
	Q90						
C-6	Power Circuit Unit	J80634-001	J80635-001	J80636-001	J80637-001	J80690-001	J80691-001
C-16	Control Circuit Unit	J80641-001					
F-1~ F-34	Switch Assembly	229240-001	J01244-001	J03134-001	229250-001		J80727-001 (EMC BOX) +
		J02045-001 (USA)	J02046-001 (OCR)	(3P Plug Assy)	J02047-001 (USA)	J03245-001 (OCR)	
		230542-001 (Canada)	236127-001 (Australia)	J03238-001	230545-001 (Canada)	---	J80631-001 (EMC CORE)
		237272-001 (Canada, OCR)			237273-001 (Canada, OCR)		

Machine Model		COV (B27*, B25*)					
Ref. No.	Sub-Class	Single Phase			Three Phase		
	Voltage (V)	110	220 ~ 240	230 CE	220	380 ~ 415	400 CE
A-18	INV Motor Assembly	J80644-002			J80653-002		
A-19	Taper Pulley Q105	J02281-001					
C-6	Power Circuit Unit	J80634-001	J80722-001	J80724-001	J80723-001	J80690-001	J80691-001
C-16	Control Circuit Unit	J80674-001					
C-17	Sub Control Circuit Unit	J80675-001					
F-1~ F-34	Switch Assembly	229240-001	J01244-001	J03134-001	229250-001		J80727-001 (EMC BOX) +
		J03239-001 (USA)	---	(3P Plug Assy)	J03240-001 (USA)	---	
		230542-001 (Canada)	236127-001 (Australia)	J03238-001	230545-001 (Canada)	---	J80631-001 (EMC CORE)
		J03241-001 (Canada, OCR)			J03242-001 (Canada, OCR)		

Machine Model		B883 (BAST)					
Ref. No.	Sub-Class	Single Phase			Three Phase		
	Voltage (V)	110	220 ~ 240	230 CE	220	380 ~ 415	400 CE
A-18	INV Motor Assembly	J80643-001			J80652-001		
A-19	Taper Pulley Q90	J02278-001					
C-6	Power Circuit Unit	J80634-001	J80635-001	J80636-001	J80637-001	J80690-001	J80691-001
C-16	Control Circuit Unit	J80641-001					
F-1~ F-34	Switch Assembly	J00452-001	J00460-001	J03134-001	J00470-001		J80727-001 (EMC BOX) +
		J00453-001 (USA)	J00462-001 (OCR)	(3P Plug Assy)	J00471-001 (USA)	J03246-001 (OCR)	
		J00455-001 (Canada)	J00464-001 (Australia)	J03247-001	J00473-001 (Canada)	---	J80631-001 (EMC CORE)
		J00457-001 (Canada, OCR)			J00477-001 (Canada, OCR)		

INDEX / VERZEICHNIS /
INDEX / INDICE

PARTS NO.	REF. NO.	PARTS NO.	REF. NO.	PARTS NO.	REF. NO.
002400-806	D-18	229017-001	C-8-1, C-12	388706-011	G-1
014500-632	A-2	229240-001	F-1	J00021-001	i-11-24
021080-206	D-10	229250-001	F-12	J00074-001	i-11-36
021080-302	i-10-6, i-11-6	230542-001	F-2	J00107-001	D-2
021100-206	D-4	230545-001	F-13	J00351-001	B-8
021400-305	i-11-26	233063-001	H-19	J00353-001	D-29
021500-205	A-3	233067-001	H-12	J00452-001	F-22
025030-132	H-18	233091-002	H-10	J00453-001	F-24
025040-173	C-23, D-8-3, D-14-5	233092-001	H-11	J00455-001	F-23
025040-335	i-11-23	233217-002	i-10-1	J00457-001	F-25
025050-335	A-5	233221-003	i-10-2, i-11-2	J00460-001	F-26
025080-336	D-11	233222-003	i-10-3, i-11-3	J00462-001	F-28
025100-236	D-5	233223-001	i-10-4, i-11-4	J00464-001	F-27
026350-132	H-15	233224-002	i-10-7, i-11-7	J00470-001	F-30
028030-242	H-17	233225-001	i-10-15	J00471-001	F-32
028040-245	C-24, D-8-2, D-14-4	233228-001	i-10-12	J00473-001	F-31
028050-245	A-4	233229-001	i-10-13, i-11-13	J00477-001	F-33
028080-242	i-10-5, i-11-5	233230-001	i-10-14, i-11-14	J00494-001	B-2, C-7-1, C-8-2
028080-246	D-12	233231-001	i-10-8, i-11-8	J00649-001	D-28-1-5, D-28-2-5
028100-246	A-21, D-6	233232-001	i-10-11, i-11-11	J00715-001	A-12-2
028350-242	H-14	233233-001	i-10-10, i-11-10	J01084-001	i-11-27
037401-015	D-28-1-3, D-28-2-3	233236-001	i-10-23, i-11-33	J01087-001	i-11-29
061400-402	i-10-17, i-11-19	233250-001	i-10-21, i-11-31	J01089-001	i-11-34
061401-205	i-10-9, i-10-19, i-11-9, i-11-28	233251-003	i-10-22	J01244-001	F-5, F-9-1
062301-402	H-16	233263-001	G-7	J01463-001	C-29
062400-863	D-8-4	233268-002	G-1-2	J01585-001	i-10-25
062401-063	C-25, D-8-1, D-14-3	233488-002	i-10-24	J01778-001	C-16-1
062402-005	i-11-22	233491-001	i-12	J01892-001	C-15
062670-612	H-21	233500-001	H-20	J01930-001	D-28-1-1
062670-812	H-40	233501-001	G-8	J01945-001	D-28-2-1
062671-212	E-7	233515-001	i-14	J01988-001	E-3-1
062672-012	H-13	233516-001	i-10-26	J01989-001	E-2-1
062680-812	H-26	233544-001	H-25	J01990-001	E-1-1
062681-212	E-6, G-5	233545-001	H-24	J02998-001	C-1, D-1
076202-801	A-12-1, A-12-2	233573-001	H-33	J02027-001	D-21
0A4301-205	C-7-2	233574-001	H-37	J02028-001	D-23
0A4402-506	C-18	233575-001	H-31	J02029-001	C-14
142268-001	H-30	233604-001	H-29	J02036-001	D-15
151431-001	H-32	233618-001	H-34	J02037-001	C-26-1
200190-001	F-36, i-13	233619-001	G-7	J02038-001	D-13-1
203684-001	A-13-1, A-13-2	233694-001	H-39	J02039-001	D-14-1
210965-081	D-3	233695-001	H-41	J02045-001	F-3
215081-001	D-17, D-22	233696-001	H-38	J02046-001	F-7
215081-002	E-4	236127-001	F-6	J02047-001	F-14
215082-001	B-10	236315-001	H-43	J02054-001	E-9
215082-002	G-3	237043-002	G-2	J02058-001	E-5
216205-000	A-20	237272-001	F-4	J02059-001	E-8
217071-001	B-5	237273-001	F-15	J02062-001	C-4, C-10
217093-001	i-10-16, i-11-18	238186-001	i-11-15	J02130-001	D-28-1-4, D-28-2-4
220681-001	C-3	238188-001	i-11-16	J02195-001	C-27-1
222372-001	D-9	238191-001	i-11-20	J02278-001	A-19
224508-001	B-4, B-5	238194-001	i-11-1	J02281-001	A-19
225534-001	i-11-21	238196-001	i-11-32	J02293-001	B-7
228272-001	F-16-1-1	291640-011	G-1	J02302-001	F-8-1
228295-001	C-5	291642-011	G-1	J02470-001	C-13
228475-000	i-11-35	291657-013	G-1	J02493-001	A-22
228957-001	i-11-25	291659-011	G-1	J02495-001	D-13-2
		291674-011	G-1	J02496-001	D-14-2

PARTS NO.	REF. NO.	PARTS NO.	REF. NO.	PARTS NO.	REF. NO.
J02497-001	C-22	J80081-040	i-11		
J02501-001	D-25	J80630-001	i-10		
J02502-001	C-2	J80631-001	C-28, D-19, F-18		
J02503-001	C-2	J80633-001	E-15		
J02505-001	C-11	J80634-001	C-6		
J02506-001	C-11	J80635-001	C-6		
J02508-001	B-9	J80636-001	C-6		
J02513-001	B-1	J80637-001	C-6		
J02514-001	C-4	J80638-001	D-28-2		
J02515-001	B-3	J80639-001	D-28-1		
J02516-001	B-6	J80640-001	D-28-1-2, D-28-2-2		
J02517-001	D-7	J80641-001	C-16		
J02518-001	A-14	J80643-001	A-18		
J02521-001	A-14	J80643-002	A-18		
J02525-001	A-1	J80644-002	A-18		
J02534-001	A-7-1, A-8	J80652-001	A-18		
J02536-001	A-9	J80652-002	A-18		
J02537-001	A-6	J80653-002	A-18		
J02538-001	A-6	J80654-001	A-10		
J02560-001	A-17	J80654-002	A-10		
J02563-001	A-16	J80655-002	A-10		
J02566-001	E-10	J80656-001	A-10		
J02567-001	E-11	J80656-002	A-10		
J02568-001	D-24	J80657-002	A-10		
J02628-001	C-13	J80674-001	C-16		
J02664-001	C-2	J80675-001	C-17		
J02678-001	F-17	J80690-001	C-6		
J02832-001	D-8	J80691-001	C-6		
J02949-001	i-10-18	J80722-001	C-6		
J02950-001	i-10-20	J80723-001	C-6		
J02955-001	D-23	J80724-001	C-6		
J02989-001	A-24	J80727-001	F-16		
J02991-001	A-15	J80744-001	E-13		
J02992-001	A-23	J80745-001	E-12		
J02997-001	A-11	J80747-001	E-2		
J03033-001	D-16	J80748-001	E-1		
J03039-001	B-11	J80750-001	E-17		
J03040-001	C-19	J80751-001	E-16		
J03041-001	C-20	J80752-001	E-14		
J03044-001	D-23	J80753-001	E-3		
J03045-001	D-25	J80754-001	E-18		
J03053-001	C-22	S02701-001	H-27		
J03125-001	C-9	S02702-001	H-22		
J03127-001	C-2	S02703-001	H-23		
J03134-001	F-8	S03816-001	F-35		
J03135-001	F-16-1	S14823-001	i-11-12		
J03137-001	C-27-2, F-8-2, F-9-2, F-16-1-2	S38352-001	D-26		
J03138-001	C-27-3, F-8-3, F-9-3, F-16-1-3	UG4163-000	C-21, D-20		
J03238-001	F-9				
J03239-001	F-10				
J03240-001	F-20				
J03241-001	F-11				
J03242-001	F-21				
J03245-001	F-19				
J03246-001	F-34				
J03247-001	F-29				

