



Home Embroidery Machine

PARTS REFERENCE LIST

MODEL: PE430

PE500

NV90E

HE1

PE525

CONFIDENTIAL

©2008 Brother Industries, Ltd.
All rights reserved.

Published: Oct.,2008
Revised: Mar.,2017

MODEL LIST

Model	Countries (Added Date)
NV90E	IND (May / 2011)
HE1	USA (Jul / 2011)
PE500	USA (Nov / 2011)
NV90E	UK&IRE (May / 2012)
NV90E	DEU&ITA&CHE (Oct / 2012)
PE430	ARG (Jun / 2014)
PE525	USA (Jul / 2014)

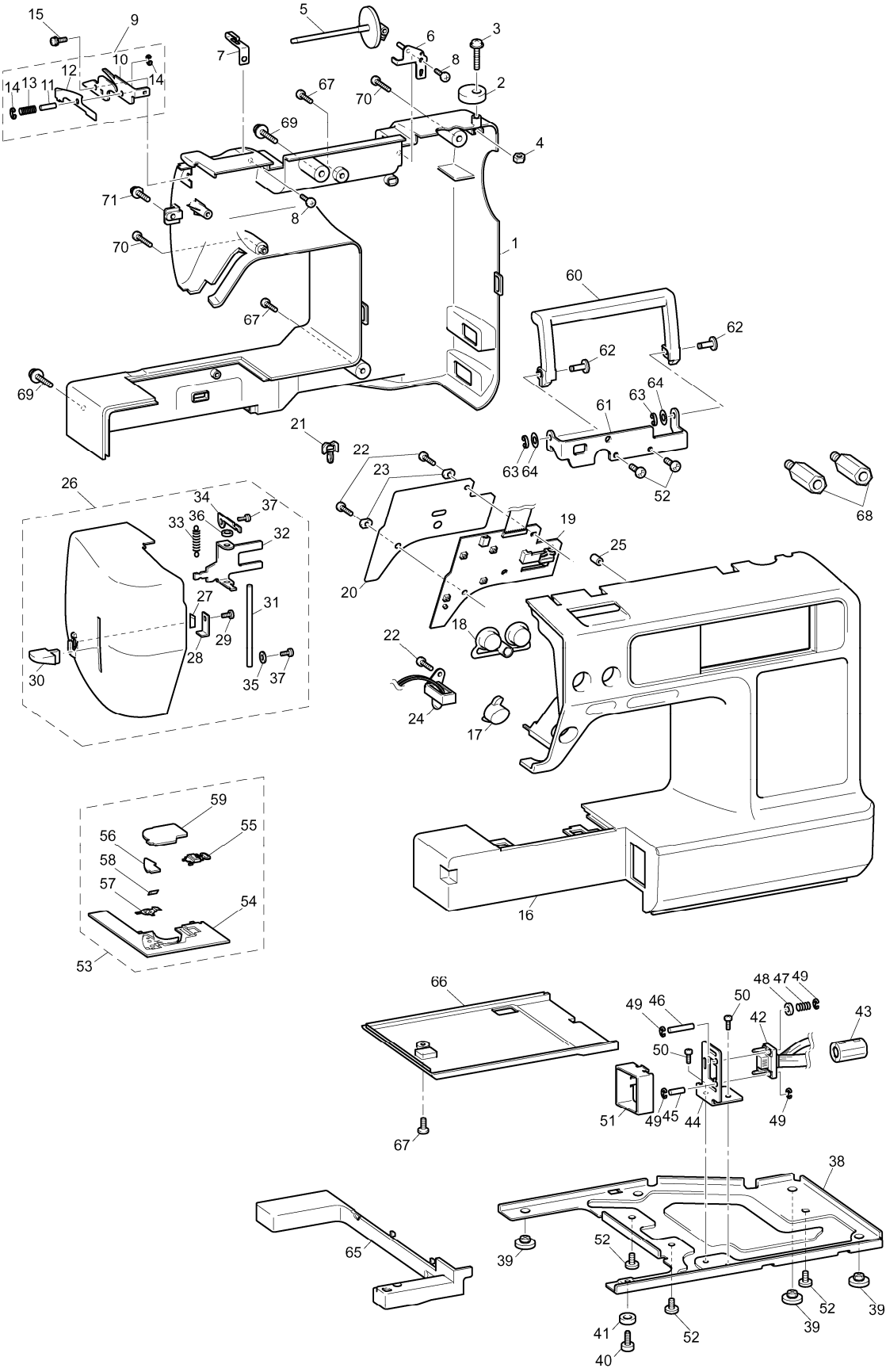
CONTENTS

(1)	MAIN FRAME / COVER	2
(2)	UPPER SHAFT / NEEDLE BAR / PRESSER FOOT UNIT.....	4
(3)-1	FEED UNIT (New type)	6
(3)-2	FEED UNIT (Old type).....	8
(4)	THREAD CUTTING UNIT.....	10
(5)	BOBBIN WINDING / NEEDLE THREADING MECHANISM	12
(6)	ELECTRIC PARTS / MAIN MOTOR UNIT	14
(7)	EMBROIDERY UNIT	16
(8)	ACCESSORY PARTS / USER MANUAL / PACKAGE	18
	SPARE PARTS	20

Note on parts:

We keep performance parts for this sewing machine for at least 8 years after this model is discontinued. Performance parts are the necessary parts to maintain the function of the sewing machine.

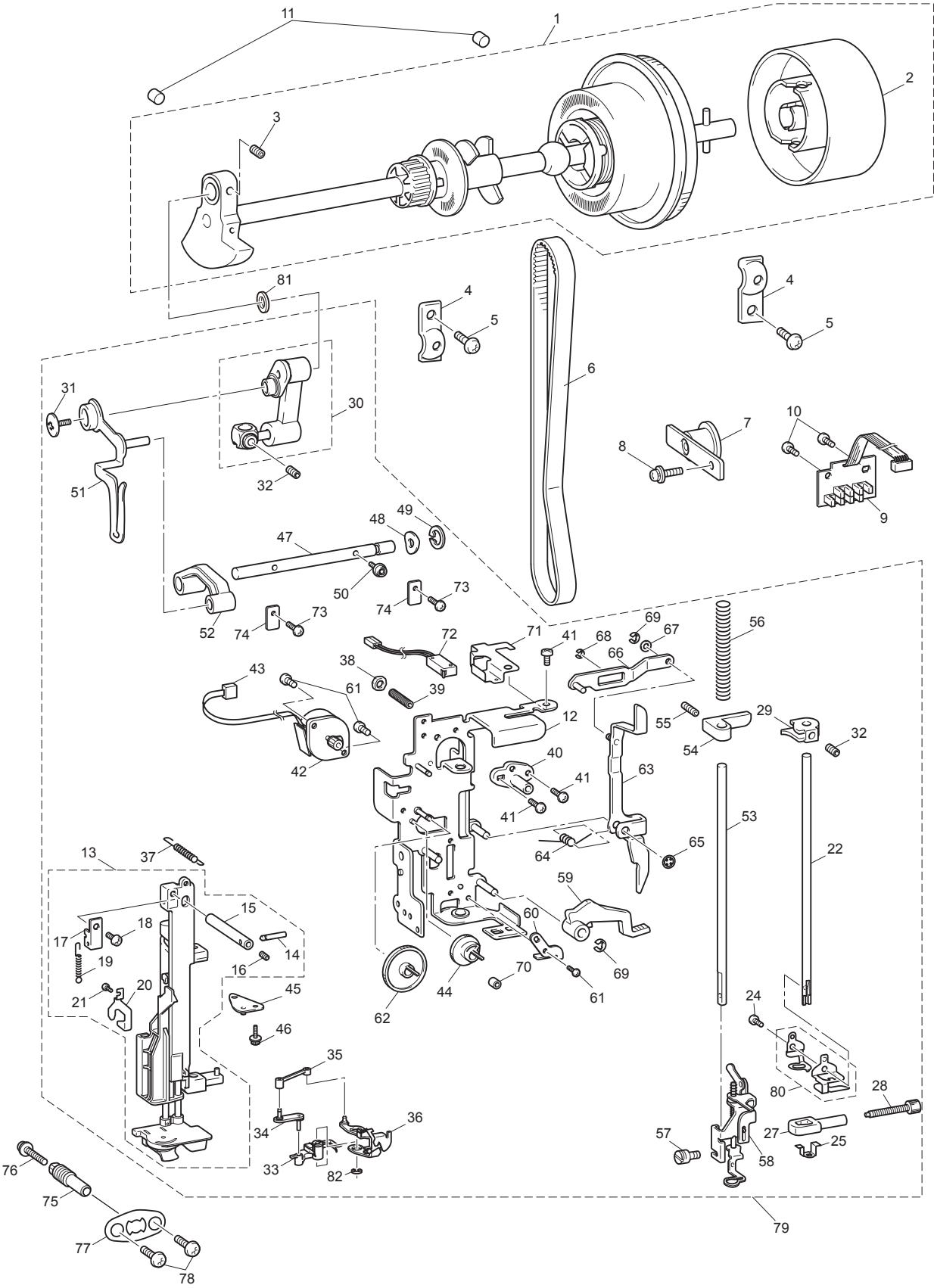
(1) MAIN FRAME / COVER



(1) MAIN FRAME / COVER

No.	CODE	NAME	R/H	REMARKS	No.	CODE	NAME	R/H	REMARKS
1	XE5481001	REAR COVER SUB ASSY	R		36	XC0508020	RUBBER WASHER		
2	XC4517151	BOBBIN PRESSER		1000018473	37	085311016	TAPTITE BIND B M3X10		
3	0A4302006	SCREW PAN (S/P WASHER) M3X20			38	XE2941001	BASE PLATE		
4	021300106	NUT 1 M3			39	XA1805021	BASE RUBBER A	H	
5	XA1786053	SPOOL PIN			40	XC3471021	ADJUSTING SCREW		
6	XE1394001	SPOOL PIN HOLDER ASSY			41	XC3472021	BASE PLATE RUBBER	H	
7	XE1490101	THREAD GUIDE SUPPORTING PLATE			42	XD0351051	LEAD WIRE ASSY MAIN BODY FCOMB		
8	085311216	TAPTITE BIND B M3X12			43	XE1829001	FERRITE CORE:K1NF-75(N)BK2		
9	XE2910001	THREAD GUIDE PLATE ASSY			44	XE2942001	CONNECTOR HOLDER		
10	XE2911001	THREAD GUIDE PLATE			45	XD0353051	ES PIN F-A		
11	XE2912001	SHAFT			46	XD0945051	ES PIN F-B		
12	XE2913001	THREAD GUIDE SPRING			47	XD0967051	SPRING,COMPRESSION		
13	X57605051	SPRING			48	XC2514021	FEED BAR SPACER		
14	048020343	RETAINING RING E2		1000038911	49	048020343	RETAINING RING E2		1000038911
15	X59642021	SCREW			50	060300516	SCREW BIND M3X5		
16	XE5552001	FRONT COVER SUPPLY ASSY:PE430 (PE430)	R		51	XE3145001	CONNECTOR HOLDER COVER		
	XE5553001	FRONT COVER SUPPLY ASSY:NV90E (NV90E)	R		52	X57908021	TAPTITE,BIND S M4X10		
	XF1263001	FRONT COVER SUPPLY ASSY:HE1 (HE1)	R	1000026162	53	XD0354251	NEEDLE PLATE B ASSY		
	XF2297001	FRONT COVER SUPPLY ASSY:PE500 (PE500)	R	1000028353	54	XD0355251	NEEDLE PLATE B	H	
	XG1089001	FRONT COVER SUPPLY ASSY:PE525 (PE525)	R	1000028353	55	XC7371022	SLIDE BUTTON		
17	XE3096101	SS BUTTON		1000019614	56	XD1666052	CUTTER COVER		
18	XE2929001	NP BUTTON			57	XD1461051	NEEDLE PLATE COVER SPRING		
19	XE5274001	SSVR PCB ASSY:CEMB			58	X80321021	NT LOWER THREAD CUTTER	H	
20	XE2935001	INSULATOR SHEET:CCOM SS			59	XD1645021	NEEDLE PLATE COVER SUPPLY ASSY	H	
21	XC3751021	MINI CLAMP:UAMS-02			60	XE1447201	HANDLE		1000029226
22	085311016	TAPTITE BIND B M3X10			61	XE2953001	HANDLE HOLDER		
23	XC6363021	BOARD PRESSER			62	XE1449001	HANDLE SHAFT		
24	XE2367001	LED LAMP RIGHT SUPPLY ASSY LE1			63	048040343	RETAINING RING E4		1000038911
25	XE3376001	RUBBER			64	137713020	POLYESTER SLIDER		
26	XE2937001	FACE PLATE ASSY	R		65	XE2954001	BASE FOOT COVER		
27	X80321021	NT LOWER THREAD CUTTER	H		66	XE5354001	BOTTOM COVER		
28	XE1435001	FACE PLATE CUTTER HOLDER			67	060400816	SCREW BIND M4X8		
29	138433021	TAPTITE,PAN B M3X6			68	XE2956001	STUD		
30	XC9604051	NEEDLE THREAD LEVER KNOB			69	087411416	TAPTITE CUP B M4X14		
31	XA5825051	NEEDLE THREAD LEVER SHAFT			70	085301616	TAPTITE BIND P M3X16		
32	XC3039151	NEEDLE THREAD LEVER			71	XC7568051	SCREW, PAN(S/P WASHER)M4X14		
33	138260051	THREAD THROUGH LEVER SPRING							
34	XA6320050	SHAFT PRESSER PLATE							
35	XA5525051	WASHER,PLAIN							

(2) UPPER SHAFT / NEEDLE BAR / PRESSER FOOT UNIT

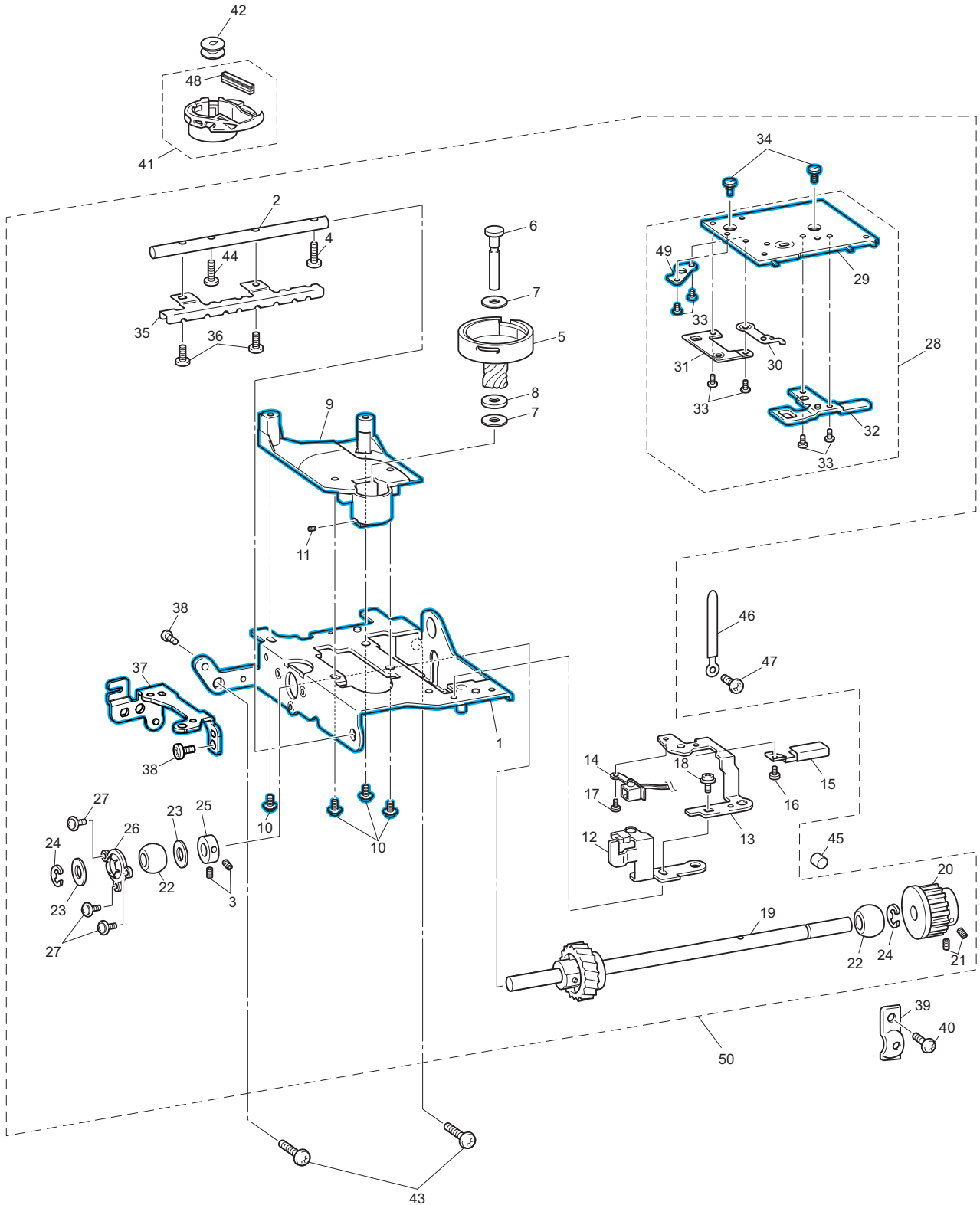


(2) UPPER SHAFT / NEEDLE BAR / PRESSER FOOT UNIT

No.	CODE	NAME	R/H	REMARKS	No.	CODE	NAME	R/H	REMARKS
UPPER SHAFT MECHANISM					43	XE2976001	LEAD WIRE ASSY ZPM-CCOM		
1	XE3707001	UPPER SHAFT SUPPLY ASSY	H		44	XE2977001	Z ZIGZAG CAM		
2	XC2375051	PULLEY			45	XD1612051	NEEDLE HOLDER GUIDE ASSY		
3	012500532	SET SCREW SOCKET (FT) M5X5			46	XC3037021	SCREW3X10		
4	132421021	BUSHING PRESSER			47	XE1470101	TAKE-UP SUPPORT SHAFT		
5	X57908021	TAPTITE, BIND S M4X10			48	XZ5030001	WASHER, SPRING		
6	XE5842001	TIMING BELT 420-5KC-6	H	1000034635	49	048050343	RETAINING RING E5		1000038911
7	XE3581001	TENSION PULLEY ASSEMBLY			50	XC3338021	SCREW3X8		
8	138172021	SCREW, PAN (S/P WASHER) M4X10			51	XC8564031	THREAD TAKE-UP LEVER		
9	XE3036001	NP PCB ASSY CCOM			52	XC4897020	THREAD TAKE-UP LEVER LINK		
10	060400816	SCREW BIND M4X8			53	XC4898021	PRESSER BAR		
11	XC3183051	FELT			54	XC4899121	PRESSER BAR CLAMP		
NEEDLE BAR / PRESSER FOOT UNIT					55	XC7207021	SCREW STUD M5		
12	XE5357001	BASE HOLDER ASSY CE			56	XC4900021	SPRING		
13	XE2970001	NEEDLE BAR HOLDER ASSY	H		57	XG1343001	SCREW SM3.57-40X8	H	1000052522
14	XC2420020	SHAFT			58	XD0474151	EMBROIDERY PRESSER ASSEMBLY		
15	XC8754021	NEEDLE HOLDER SHAFT A			59	XE2982001	PRESSER FOOT LIFTER	H	
16	014300532	SET SCREW SOCKET (CP) M3X5			60	XE2983001	EMBROIDERY PRESSER STOPPER		
17	XC8755020	PLATE			61	060300416	SCREW BIND M3X4		
18	060300516	SCREW BIND M3X5			62	XE2984001	T CAM		
19	X50476021	SPRING			63	XE2985001	THREAD RELEASE LEVER ASSY		
20	XE1463001	HOOK RELEASE PLATE			64	XC4904121	SPRING		
21	000020416	SCREW BIND M2X4		1000042428	65	146200021	RETAINING RING, CS4		
22	XF2685001	NEEDLE BAR	H	1000040787	66	XE2988001	THREAD RELEASER ASSY		
23	XE0041104	NEEDLE BAR THREAD GUIDE Q		1000016793	67	137713020	POLYESTER SLIDER		
24	X53053052	SCREW SM2.38			68	048020343	RETAINING RING E2		1000038911
25	XC2426020	NEEDLE THREAD PLATE			69	048040343	RETAINING RING E4		1000038911
26	XE0042104	NEEDLE THREAD GUIDE SPRING		1000016793	70	XC8773020	RUBBER		
27	XC2427051	NEEDLE BLOCK		1000056100	71	XE1507001	PRESSER SWITCH HOLDER		
28	XZ0388251	NEEDLE CLAMP SCREW	H		72	XE2991001	PF SWITCH ASSY: CCOM		
29	XC2434021	NEEDLE THREAD BLOCK			73	X57908021	TAPTITE, BIND S M4X10		
30	XC6562131	NEEDLE BAR CRANK ROD ASSY	H		74	X50532021	PRESSER PLATE		
31	XE1999001	SCREW, FLAT SM3.57-40X7 L			75	XC2504050	ADJUSTING SCREW		
32	012400432	SET SCREW SOCKET (FT) M4X4			76	XZ0380051	SCREW, PAN (WASHER) M3X18		
33	XE1464501	THREATER HOOK ASSY	H	1000019655	77	XC6056120	PLATE SPRING		
34	XD1546051	LINK A ASSY			78	060400816	SCREW BIND M4X8		
35	XD1548151	LINK B			79	XE5554101	NEEDLE UNIT SUPPLY ASSY C-EMB		1000029344
36	XE1465001	THREAD GUIDE ASSY			80	XE7727201	N/B THREAD GUIDE SUPPLY ASSY		1000027848
37	XC2429021	SPRING			81	X53330020	WASHER		1000034663
38	X56851021	LOCK NUT			82	048025346	RETAINING RING E2.5		1000032425
39	014401232	SET SCREW SOCKET (CP) M4X12							
40	XC8756021	SHAFT BUSHING							
41	060300616	SCREW BIND M3X6							
42	XE2974001	Z PULSE MOTOR: M35SP-9N CCOM							

(3)-1 FEED UNIT (New type)

*There are two types (new type / old type) of the feed unit and the using parts are different. When ordering parts, check the shape of the parts indicated in blue to order appropriate ones.

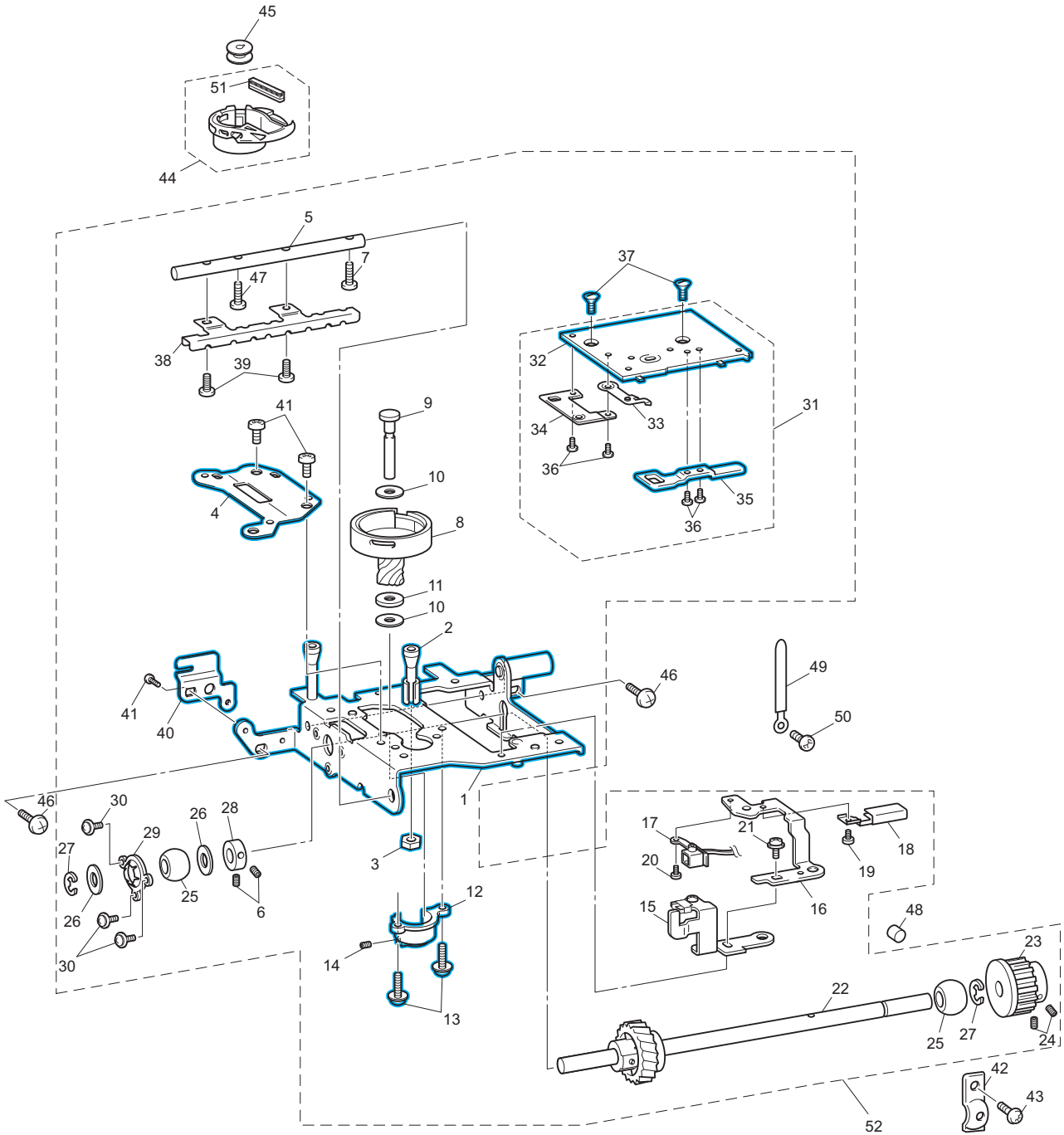


(3)-1 FEED UNIT (New type)

No.	CODE	NAME	R/H	REMARKS	No.	CODE	NAME	R/H	REMARKS
1	XF7691001	BASE PLATE ASSY		1000039425	45	XC3183051	FELT		
2	XE2995001	HORIZONTAL FEED SHAFT			46	XA0286051	WIRE CLIP		1000042697
3	014400432	SET SCREW SOCKET (CP) M4X4			47	060400516	SCREW BIND M4X5		
4	060301206	SCREW BIND M3X12			48	XD1856100	PILE	H	1000055798
5	XF3569001	OUTER ROTARY HOOK ASSY	H	1000047756	49	XE6472001	NEEDLE PLATE HOLDER		1000039425
6	XE1480001	OUTER ROTARY HOOK SHAFT							
7	137805022	SPACER			50	XF7720001	FEED UNIT SUPPLY ASSY C-EMB N		1000039425
8	137976021	WASHER 6							
9	XZ5092001	SHAFT SUPPORTER		1000039425					
10	0A4400806	SCREW,PAN(S/P WASHER)M4X8		1000039425					
11	014400632	SET SCREW SOCKET (CP) M4X6							
12	XE3650101	INNER ROTARY HOOK BRACKET ASSY	H	1000016400					
13	XE2998001	PHOTO DIODE SUPPORTER							
14	XE2999001	PHOTO DIODE HOLDER ASSY							
15	XC7866351	CORD HOLDER		1000012334					
16	060260316	SCREW BIND M2.6X3							
17	000020416	SCREW BIND M2X4		1000016096					
18	0A5300806	SCREW PAN (S/P WASHER) M3X8							
19	XE5360001	LOWER SHAFT ASSY							
20	XC4943021	TIMING PULLEY D							
21	014500532	SET SCREW SOCKET (CP) M5X5							
22	X52664020	LOWER SHAFT BUSHING							
23	X51383020	WASHER,THRUST							
24	048060343	RETAINING RING E6		1000038911					
25	XC8798021	SET COLLAR							
26	XC4944021	BUSHING PRESSER B							
27	085310615	TAPTITE BIND B M3X6							
28	XF7693001	NEEDLE PLATE A ASSY	H	1000039425					
29	XF7694001	NEEDLE PLATE A		1000039425					
30	XF2440001	STOPPER PLATE		1000030484					
31	XE1488001	NEEDLE PLATE B SUPPORT PLATE							
32	XF7695001	F GEAR STOPPER PLATE		1000039425					
33	060260316	SCREW BIND M2.6X3		1000039425					
34	XE6473001	SCREW NEEDLE PLATE	H	1000039425					
35	XE3004001	LEAD WIRE GUIDE HOLDER							
36	060300416	SCREW BIND M3X4							
37	XF5447001	THREAD CUTTER MODULE SUPPORTER		1000039425					
38	060400516	SCREW BIND M4X5		1000039425					
39	132421021	BUSHING PRESSER							
40	X57908021	TAPTITE,BIND S M4X10							
41	XD1855551	INNER ROTARY HOOK ASSY	R/H	1000055798					
42	X52800120	BOBBIN							
43	XE1489001	STUD SCREW M4							
44	060301206	SCREW BIND M3X12							

(3)-2 FEED UNIT (Old type)

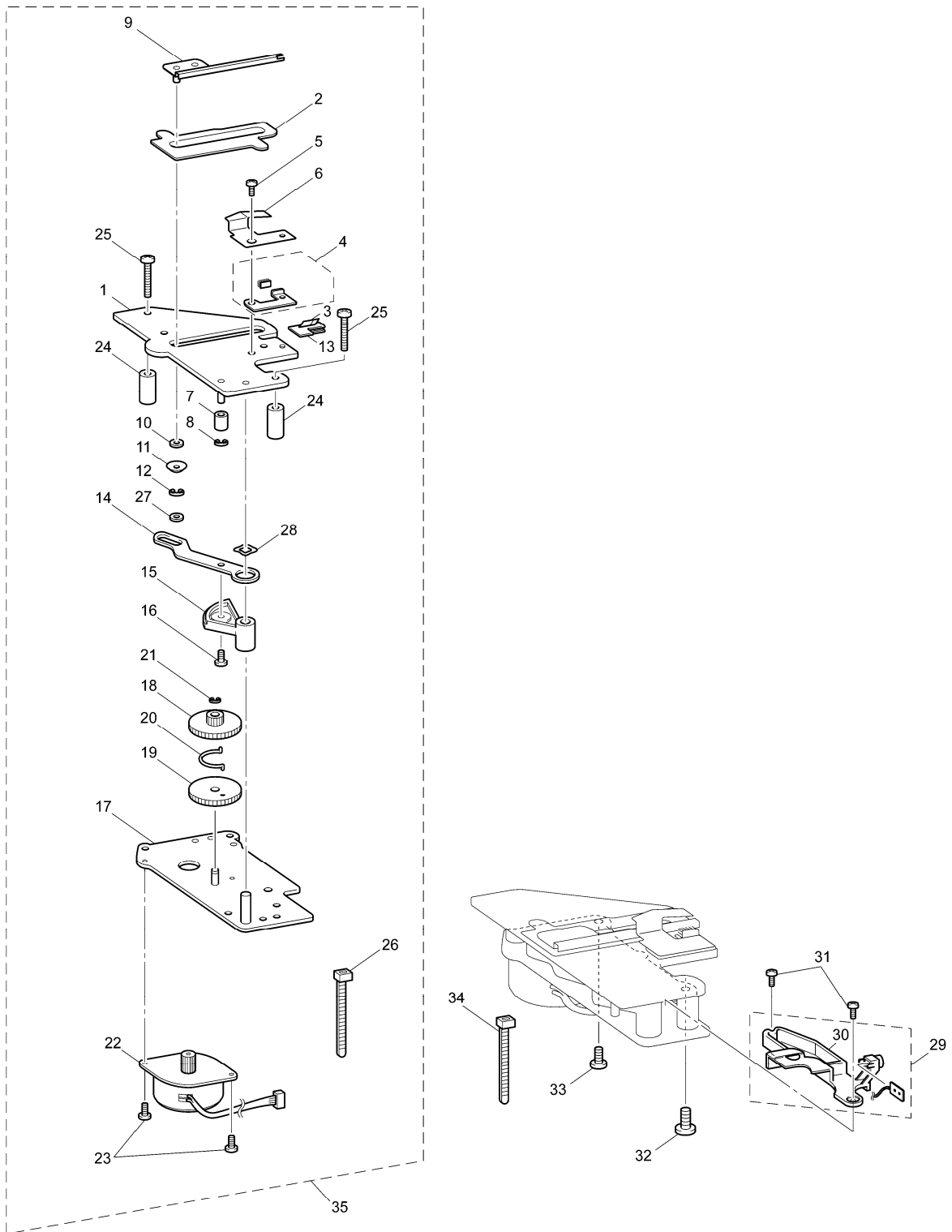
*There are two types (new type / old type) of the feed unit and the using parts are different. When ordering parts, check the shape of the parts indicated in blue to order appropriate ones.



(3)-2 FEED UNIT (Old type)

No.	CODE	NAME	R/H	REMARKS	No.	CODE	NAME	R/H	REMARKS
1	XE5359001	BASE PLATE ASSY			45	X52800120	BOBBIN		
2	XC8782021	NEEDLE PLATE SUPPORTER SHAFT B			46	XE1489001	STUD SCREW M4		
3	021300106	NUT 1 M3			47	060301206	SCREW BIND M3X12		
4	XE2994001	THREAD CUTTER MODULE SUPPORTER			48	XC3183051	FELT		
5	XE2995001	HORIZONTAL FEED SHAFT			49	XA0286051	WIRE CLIP		1000042697
6	014400432	SET SCREW SOCKET (CP) M4X4			50	060400516	SCREW BIND M4X5		
7	060301206	SCREW BIND M3X12			51	XD1856000	PILE	H	1000019976
8	XC2210021	OUTER ROTARY HOOK ASSY	H	1000023473					
9	XE1480001	OUTER ROTARY HOOK SHAFT			52	XE5555101	FEED UNIT SUPPLY ASSY C-EMB		1000029406
10	137805022	SPACER							
11	137976021	WASHER 6							
12	XE1481001	SHAFT SUPPORTER							
13	138172021	SCREW,PAN(S/P WASHER)M4X10							
14	014400632	SET SCREW SOCKET (CP) M4X6							
15	XE3650101	INNER ROTARY HOOK BRACKET ASSY	H	1000016400					
16	XE2998001	PHOTO DIODE SUPPORTER							
17	XE2999001	PHOTO DIODE HOLDER ASSY							
18	XC7866351	CORD HOLDER		1000012334					
19	060260316	SCREW BIND M2.6X3							
20	000020416	SCREW BIND M2X4		1000016096					
21	0A5300806	SCREW PAN (S/P WASHER) M3X8							
22	XE5360001	LOWER SHAFT ASSY							
23	XC4943021	TIMING PULLEY D							
24	014500532	SET SCREW SOCKET (CP) M5X5							
25	X52664020	LOWER SHAFT BUSHING							
26	X51383020	WASHER,THRUST							
27	048060343	RETAINING RING E6		1000038911					
28	XC8798021	SET COLLAR							
29	XC4944021	BUSHING PRESSER B							
30	085310615	TAPTITE BIND B M3X6							
31	XE5361201	NEEDLE PLATE A ASSY	H	1000029406					
32	XE5362001	NEEDLE PLATE A							
33	XF2440001	STOPPER PLATE		1000030484					
34	XE1488001	NEEDLE PLATE B SUPPORT PLATE							
35	XD1623251	F GEAR STOPPER PLATE		1000025374					
36	060260316	SCREW BIND M2.6X3							
37	X50487021	SCREW M4	H						
38	XE3004001	LEAD WIRE GUIDE HOLDER							
39	060300416	SCREW BIND M3X4							
40	XE3005001	THREAD CUTTER MODULE SUPPORTER							
41	060400516	SCREW BIND M4X5							
42	132421021	BUSHING PRESSER							
43	X57908021	TAPTITE,BIND S M4X10							
44	XD1855451	INNER ROTARY HOOK ASSY	R/H	1000053475					

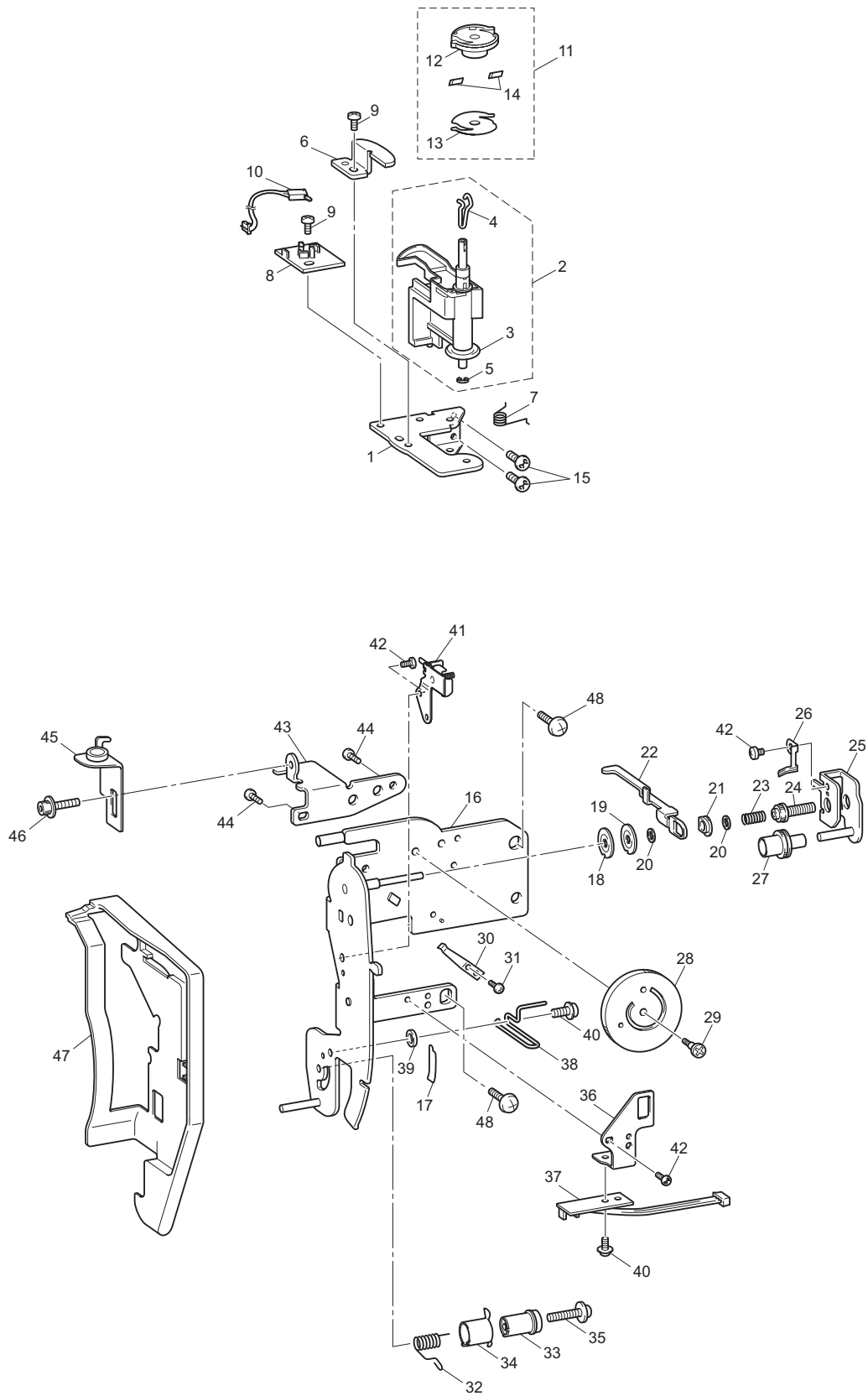
(4) THREAD CUTTING UNIT



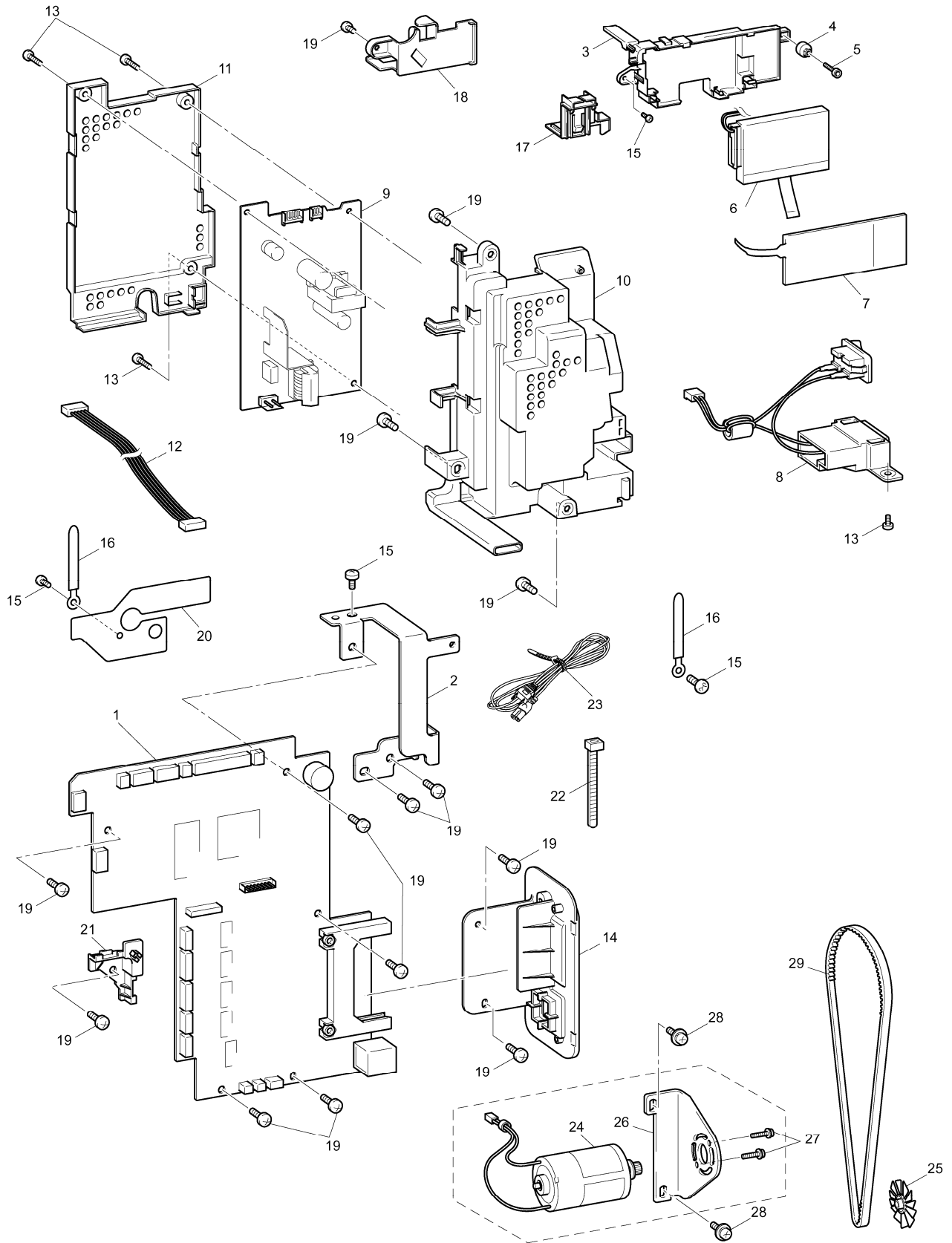
(4) THREAD CUTTING UNIT

No.	CODE	NAME	R/H	REMARKS
1	XC9733051	THREAD CUTTER FRAME ASSY		
2	XC9735050	SPACER		
3	XG2930001	CUTTER BLADE ASSY	H	1000056778
4	XE4994001	PRESSER PLATE ASSY	H	
5	060300516	SCREW BIND M3X5		
6	XC2598120	SPRING PLATE	H	
7	XC2587020	RUBBER		
8	048030343	RETAINING RING E3		1000038911
9	XC2583121	THREAD HOOK ASSY		
10	137713020	POLYESTER SLIDER		
11	X56731020	WASHER		
12	048040343	RETAINING RING E4		1000038911
13	XC9736050	CUTTER HOLDER		
14	XC2581221	THREAD CUTTER LEVER		
15	XC2582020	THREAD CUTTER LEVER GEAR		
16	0A4300605	SCREW PAN (S/P WASHER) M3X6		
17	XC2588321	MOTOR HOLDER ASSY		1000018482
18	XC2592020	IDLE GEAR A		
19	XC2593020	IDLE GEAR B		
20	X56323021	SPRING		
21	048020343	RETAINING RING E2		1000038911
22	XF7723001	C PULSE MOTOR SMJ35-4840-BP		1000040101
23	060300416	SCREW BIND M3X4		
24	XC2594121	COLLAR		
25	060402016	SCREW BIND M4X20		
26	X53169020	BAND		
27	137713020	POLYESTER SLIDER		
28	XC8407020	WAVE-SHAPE SPRING WASHER		
29	XE3186001	PHOTO TRANSISTOR ASSY		
30	XC9199051	SENSOR HOLDER		
31	0A4300605	SCREW PAN (S/P WASHER) M3X6		
32	060400516	SCREW BIND M4X5		
33	060300516	SCREW BIND M3X5		
34	X53169020	BAND		
35	XD0075351	THREAD CUTTER SUPPLY ASSY		1000044631

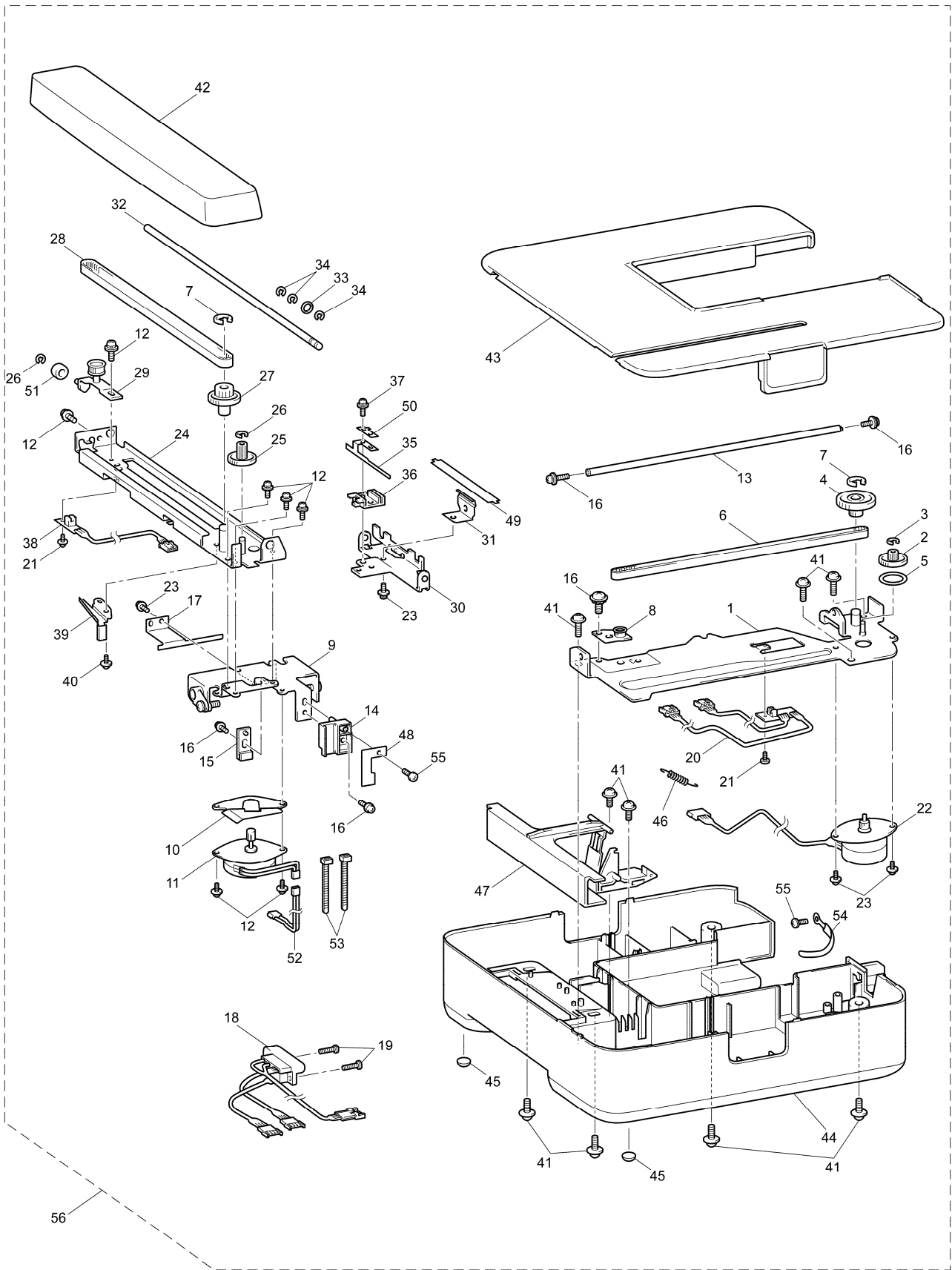
(5) BOBBIN WINDING / NEEDLE THREADING MECHANISM



(6) ELECTRIC PARTS / MAIN MOTOR UNIT



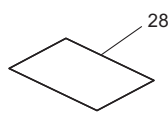
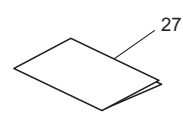
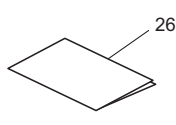
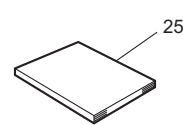
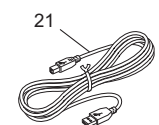
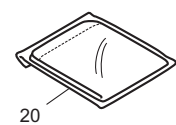
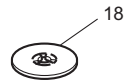
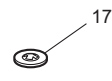
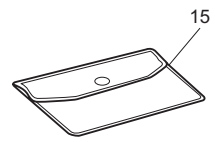
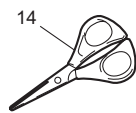
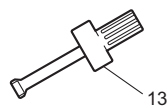
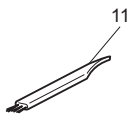
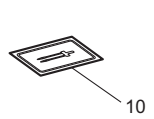
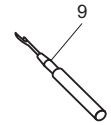
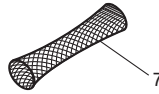
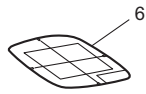
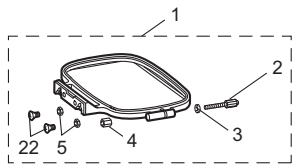
(7) EMBROIDERY UNIT



(7) EMBROIDERY UNIT

No.	CODE	NAME	R/H	REMARKS	No.	CODE	NAME	R/H	REMARKS
1	XC3807121	MAIN FRAME ASSEMBLY		1000056645	45	X59853020	RUBBER CUSHION		
2	XC4153020	X GEAR			46	XA1899021	SPRING		
3	048030343	RETAINING RING E3		1000038911	47	XC3824121	HANDLE		
4	XC4154020	X DRIVING GEAR			48	XA5352020	CORD PRESSER		
5	X53330020	WASHER			49	XA6281020	Y PRESSER PLATE		
6	X58715021	T BELT 40S2M400	H		50	XA6334020	SHUTTER PRESSER PLATE		
7	048060343	RETAINING RING E6		1000038911	51	XA6152021	ROLLER ASSY		
8	XA5308021	X TENSION PULLEY ASSY			52	XC5001021	LEAD WIRE ASSY, YPM		
9	XC3809021	X CARRIAGE GUIDE PLATE ASSY			53	X53169020	BAND		
10	XA5314020	CORD GUIDE			54	X52318021	COACHING CLIP CS-2		
11	XC3811021	MOTOR,PULSE:Y SMJ35-4823-C			55	085300815	TAPTITE BIND P M3X8		
12	XC7564021	SCREW, PAN (S/P WASHER) M3X6			56	XE7628101	EMBROIDERY SUPPLY ASSY EU		1000025686
13	XA5316021	X GUIDE SHAFT				XE7511001	EMBROIDERY SUPPLY ASSY (OTHER)		1000016800
14	XA5317120	X SLIDER							
15	XA5318120	X BELT PRESSER							
16	0A4400806	SCREW PAN (S/P WASHER) M4X8							
17	XC5350020	X SHUTTER							
18	XE3182101	LEAD WIRE ASSY:EMB UNIT		1000056640					
19	085301616	TAPTITE BIND P M3X16							
20	XE3176001	XSENS PCB ASSY:CCOM							
21	000020416	SCREW BIND M2X4		1000016096					
22	XC3815021	MOTOR,PULSE:X SMJ40-4888-A							
23	0A4300506	SCREW, PAN (S/P WASHER) M3X5							
24	XA5324221	X CARRIAGE ASSY							
25	XC4155020	Y GEAR							
26	048020343	RETAINING RING E2		1000038911					
27	XC4156120	Y DRIVING GEAR							
28	XA5330021	T BELT 40S2M316	H						
29	XA6151021	Y TENSION PULLEY ASSY							
30	XA5338121	Y CARRIAGE		1000022851					
31	XC5287121	NOTCHED SPRING							
32	XA5340121	Y GUIDE SHAFT							
33	103810022	WASHER, WAVE SPRING							
34	048040343	RETAINING RING E4		1000038911					
35	XA5341120	Y SHUTTER		1000017052					
36	XA5342120	Y SLIDER							
37	XA8390021	SCREW							
38	XE3178001	YSENS PCB ASSY:CCOM							
39	XA5346020	CORD HOLDER							
40	060300416	SCREW BIND M3X4							
41	087411416	TAPTITE CUP B M4X14							
42	XC2133025	CARRIAGE COVER	R						
43	XE3398001	ES COVER U	R						
44	XE3052001	ES COVER D	R						

(8) ACCESSORY PARTS / USER MANUAL / PACKAGE



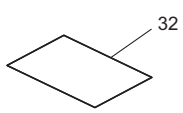
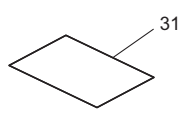
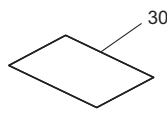
(INSTRUCTION BOOK)

(QUICK REFERENCE GUIDE)

(WARRANTY CARD)

(LANGUAGE SETTING SHEET)

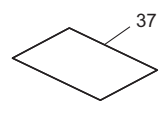
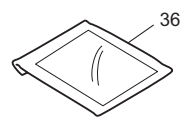
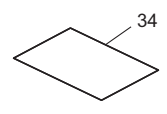
(for PRINTED MATTER)



(INSERTION WEEE)

(INSERTION)

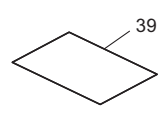
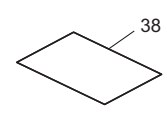
(UKRAINIAN ROHS INSERTION)



(NOT RETURN INSERTION SHEET)

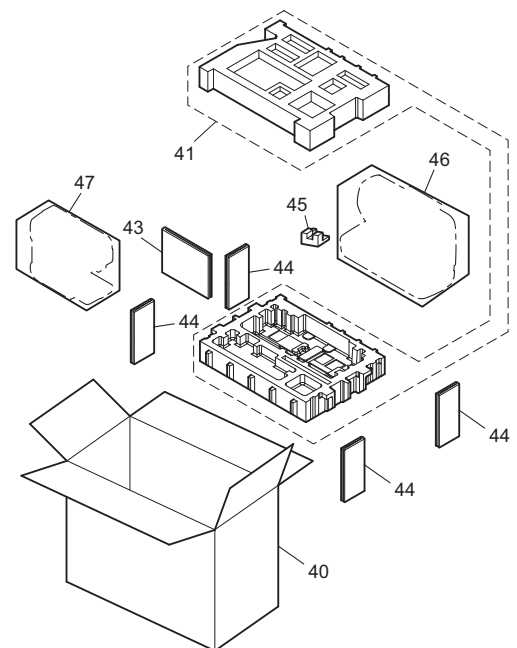
(HELP INSERTION ASSY)

(INSERTION WM EMB)



(ACCINFO SHEET)

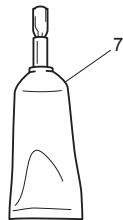
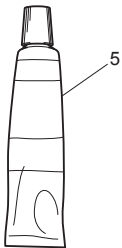
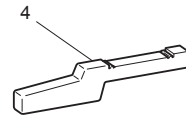
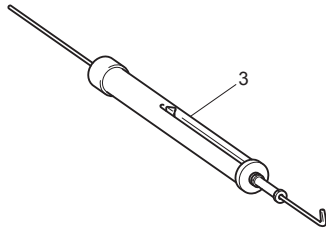
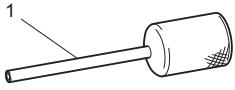
(REGISTRATION SHEET)



(8) ACCESSORY PARTS / USER MANUAL / PACKAGE

No.	CODE	NAME	R/H	REMARKS	No.	CODE	NAME	R/H	REMARKS
ACCESSORY PARTS					PACKAGE				
1	XA5353102	EMBROIDERY FRAME S2M			32	XE9897001	UKRAINIAN ROHS INSERTION (RUS)		1000024008
2	XE4590001	THUMB SCREW			33	XE9932004	GOST STICKER 29X27 (RUS)		1000042495
3	XG4333001	WASHER		1000051517	34	XE4888001	NOT RETURN INSERTION SHEET		1000026162
4	XA6982001	NUT			35	XG4337004	EMBROIDERY INSERTION 3-D		1000056295
5	021300106	NUT 1 M3			36	XF2373001	HELP INSERTION ASSY (PE500)		1000028353
6	XA5590121	EMBROIDERY SHEET S2M ASSY			37	XF2330001	INSERTION WM EMB (PE500)		1000028353
7	XA5523020	NET			38	XC7488121	ACCINFO SHEET (USA)		1000028353
8	X52800120	BOBBIN			39	XE9639001	REGISTRATION SHEET (USA)		1000029848
9	XZ5082001	SEAM RIPPER		1000020346	PACKAGE				
10	X59535051	NEEDLE SET			40	XG0512001	COLOR CARTON MODEL:PE-430 (PE430: ARG)	R	1000043311
11	X59476021	CLEANING BRUSH				XE5368001	CARTON (PE430: OTHER)	R	
12	XC1074051	DISC-SHAPED SCREWDRIVER		1000011717		XE5456001	CARTON (NV90E: RUS)	R	
13	XC4237021	DRIVER ASSY				XE5455001	CARTON (NV90E: DEU, ITA, UK&IRE, CHE)	R	1000020732
14	XC1807121	SCISSORS				XE9447001	COLOR CARTON MODEL: NV90E (NV90E: SGP, IND)	R	1000020732
15	XC4487021	ACCESSORY BAG				XF3277101	COLOR CARTON MODEL:HE1 (HE1)	R	1000043379
16	130012024	SPOOL PRESSER A				XF3887101	COLOR CARTON MODEL:PE500 (PE500)	R	1000043379
17	130013124	SPOOL PRESSER B				XG1088001	COLOR CARTON MODEL:PE525 (PE525)	R	1000044815
18	XE1372001	SPOOL PRESSER C			41	XG4534001	POLYSYRENE FOAM ASSY	R	100005241
19	XE3069001	TOUCH PEN			42	XE3155004	POLYSYRENE FOAM PAD TOP	R	100005241
20	XE5387001	DUST COVER ASSY			43	XE3156001	CENTER PAD D	R	
21	XD0745051	USB I/F CORE CABLE			44	XE3157001	SIDE PAD D	R	
22	061300606	SCREW FLAT M3X6		ADD	45	XF2315101	THREADER SUPPORT SF	R	1000031437
23	XE3060001	BOBBIN CLIP (PE500)		1000028353	46	X60439121	BAG 630X630T		1000013225
24	X60838051	BAG,70X110C (PE500)		1000028353	47	X60679021	BAG,450X400H		
USER MANUAL					48	XZ5097004	GOST STICKER 36X36 (RUS)		1000042495
25	XE5365201	INSTRUCTION BOOK SPA (Spanish)	R	1000056664		XE4890101	NOT RETURN STICKER ENG		1000049325
	XE5488001	INSTRUCTION BOOK BR (Portuguese)	R						
	XE5532001	INSTRUCTION BOOK RUS (Russian)	R						
	XE7486001	INSTRUCTION BOOK GER (German)	R	1000015323					
	XE8228001	INSTRUCTION BOOK ITA (Italian)	R	1000017376					
	XE5427201	INSTRUCTION BOOK ENG (English)	R	1000056664					
26	XE5366001	QUICK REFERENCE GUIDE	R						
27	XF2704001	WARRANTY SHEET FOR MASS (USA)		1000029848					
	XF5055001	STANDARD WARRANTY FOR US (USA)		1000044815					
	XF6323101	2&5 WARRANTY FOR US (USA)		1000038646					
28	XE5367001	LANGUAGE SETTING SHEET							
29	130800021	BAG 230X310H		1000011228					
30	XF0300101	INSERTION WEEE		1000034540					
	XE8541004	INSERTION (for INNER ROTARY HOOK & INNER ROTARY HOOK BRACKET)		1000027042					
31	XE8862201	INSERTION CE (TUR/SGP/UAE, AUS)		1000021700					
	XF5734001	CE INSERTION 2		1000034881					
	XF3999101	INSERTION FOR AC POWER (USA)							

SPARE PARTS



brother