



PR-600, PR-600C Needle Set Procedure

For Technical Assistance Please Call Toll Free 1-877-4BROTHER

Email: tsupport@brother.com

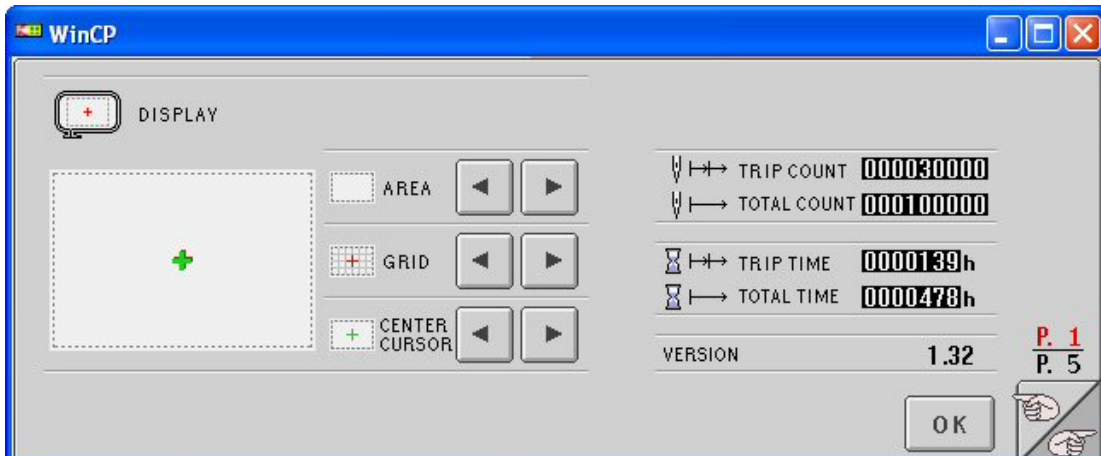
Website: http://www.brother-usa.com/industembroidery/tech_down.aspx

To program needle selection, a custom thread palette must be created. Start from the main menu screen as shown.



Press the Settings key in the upper left corner of the screen.

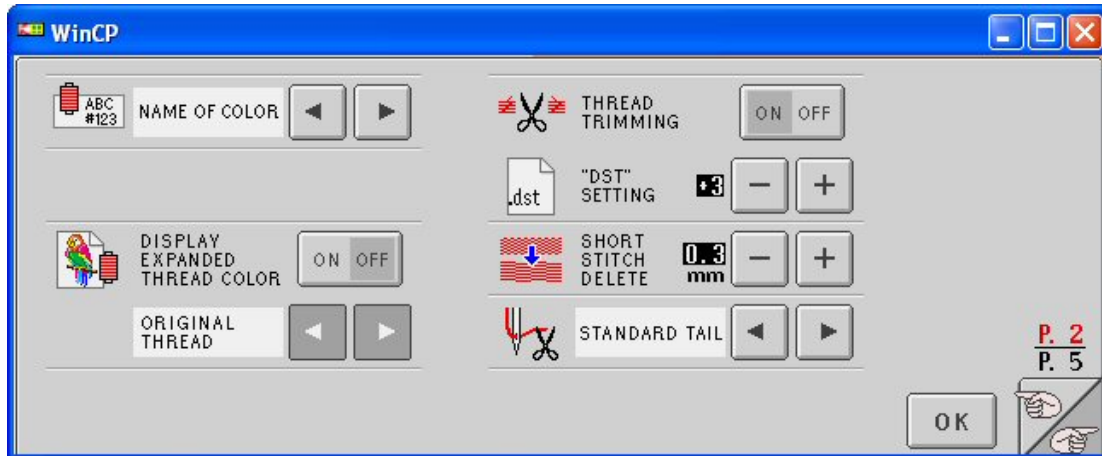
The screen should appear as such:





Press the key with the hand symbol in the lower right corner to advance to page 2.



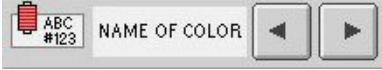

The screen should appear as such:




Press the word “on” in the  box, so that the word “on” is “grayed”. 


This will enable other thread tables to be displayed. You will notice that the arrows   have now been enabled.   Press the arrows until 

Is displayed. (NOTE: If you have already created a custom “1” table, select custom thread 2, and use table 2 throughout the remainder of these instructions, when table 1 is required).

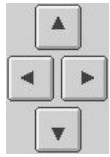
Press the   in the  box, so the name Madeira appears as shown.  . This will allow the Madeira color number to be displayed when we eventually program a design. We will select thread numbers that will be easily identified with a needle bar number.

Press the  key, and advance to page 4. The screen should appear as such:




NOTE: if you are programming for table 2, press the “2” in the  box, as mentioned earlier.

If Madeira does not appear in the  box, press the  arrows until Madeira appears.


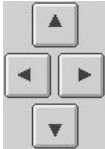


Press the 4 way arrows to move enlarged “cursor” box to the leftmost box, second from the bottom as shown.




Use the number pad,  and enter the number 1811. Press the set key. The screen should appear as such:



Press the right arrow  of the 4-way arrow pad.  The screen should appear as such:



Enter the number 1622 and press . Repeat the last steps of pressing the right arrow, entering numbers, and pressing set, until six colors have been programmed. Program the number for the third box as 1833, the fourth box as 1944, the fifth box as 1955, and the sixth box as 1866.

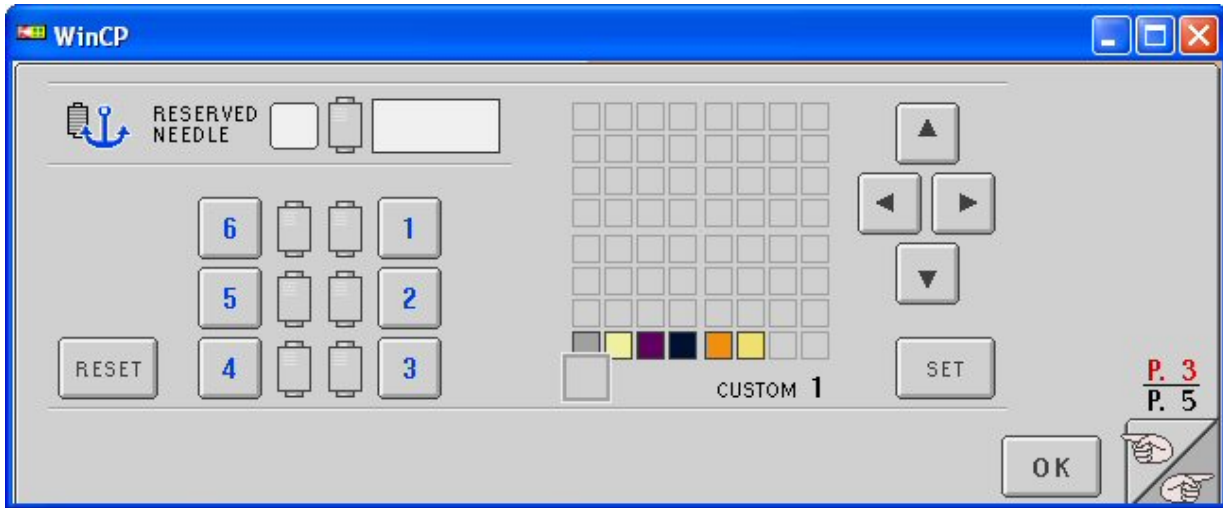
If you enter an incorrect number, press the  clear button in the number pad, and re-enter the correct number.


Once this has been completed, the screen should appear as such:






Press the  key and return to page 3.

The screen should appear as such:






Press the box with the “1” .

Press the up arrow  to select the dark gray box.

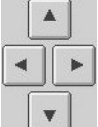

Press the “Set” key . You will notice that image of an “anchor” appeared over the #1 spool  .

Press the box with the “2” .

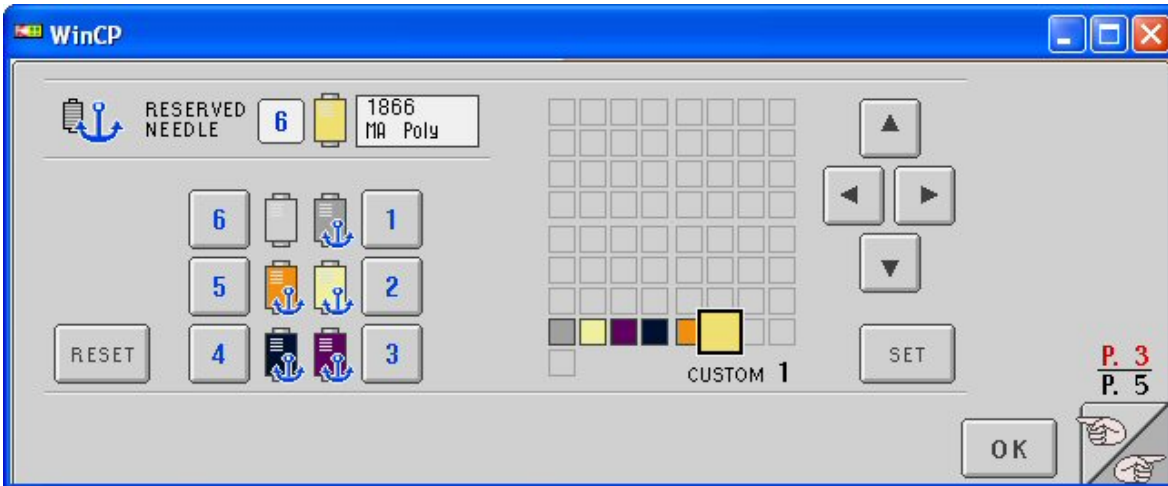
Press the arrows on the 4-way arrow pad  and select the second color created.

Press the “Set” key . You will notice that image of an “anchor” appeared over the #2 spool  .


Repeat these past steps of pressing the box with the numbers (3, 4, 5 and finally 6 when

appropriate), and then using the 4-way arrow pad  select the second, third, fourth, etc. color, and then press the set key .

When this has been completed, the screen should appear as such:




You will notice that only five “anchors” appear over the spools. The earlier versions of software would only allow five needles to be anchored. Latest versions allow all six to be anchored.

Press the OK key. 

Once this has been completed, you will be able to program designs with the six colors that you have set on your custom thread table. Since there are only six colors on this table, and that they are anchored, they can represent the six needle bars of the machine.

To program a design by needle bar sequence, start from the main menu. For our example, select the pre-programmed designs by pressing the

“Design” key from the main menu. 

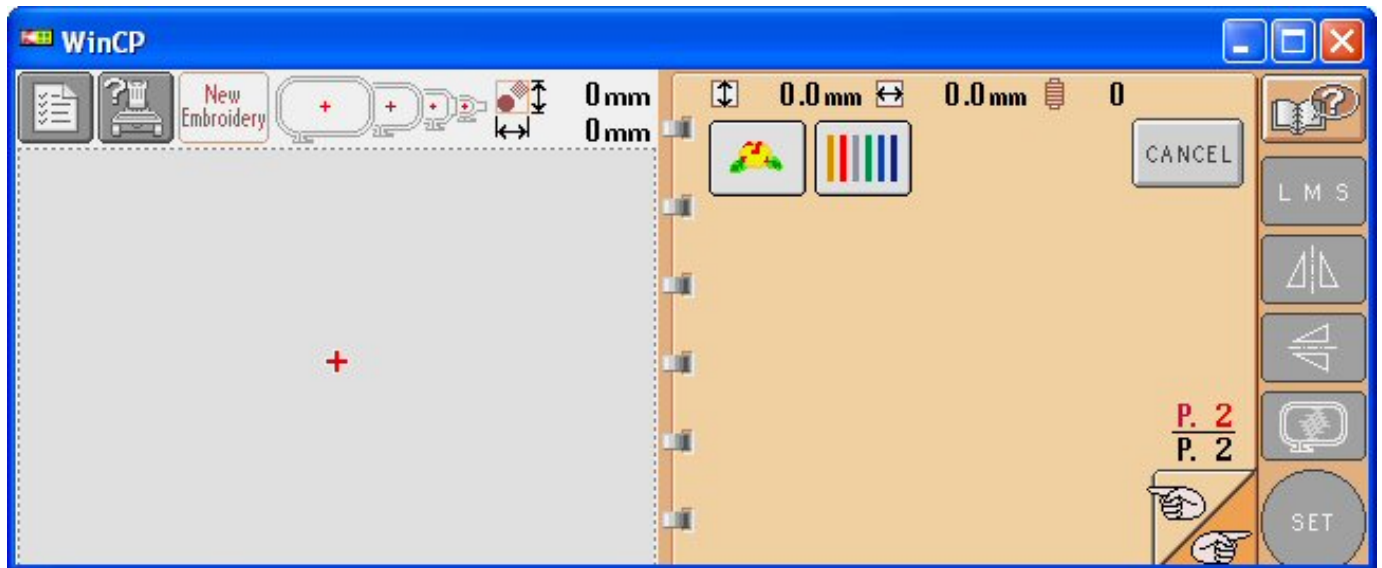
The screen should appear as such:



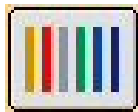


Use the “page turn” key,  and advance to page two.

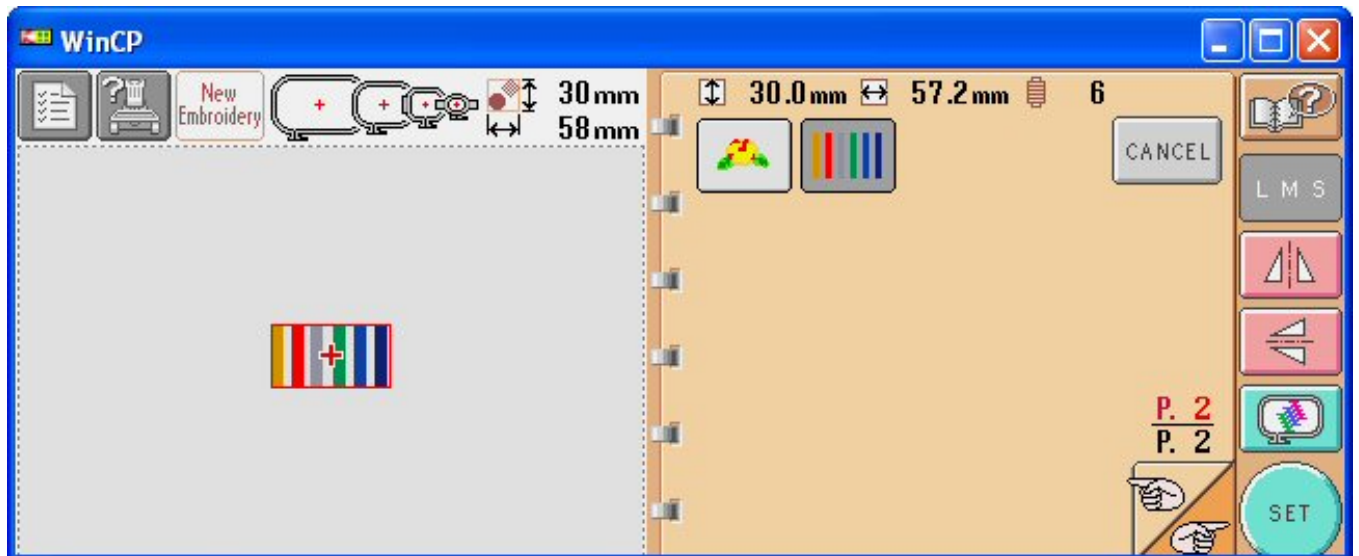
The screen should appear as such:




The design displayed is contained in the software of the machine. This is the tension test design, which contains six vertical satin columns, as shown.



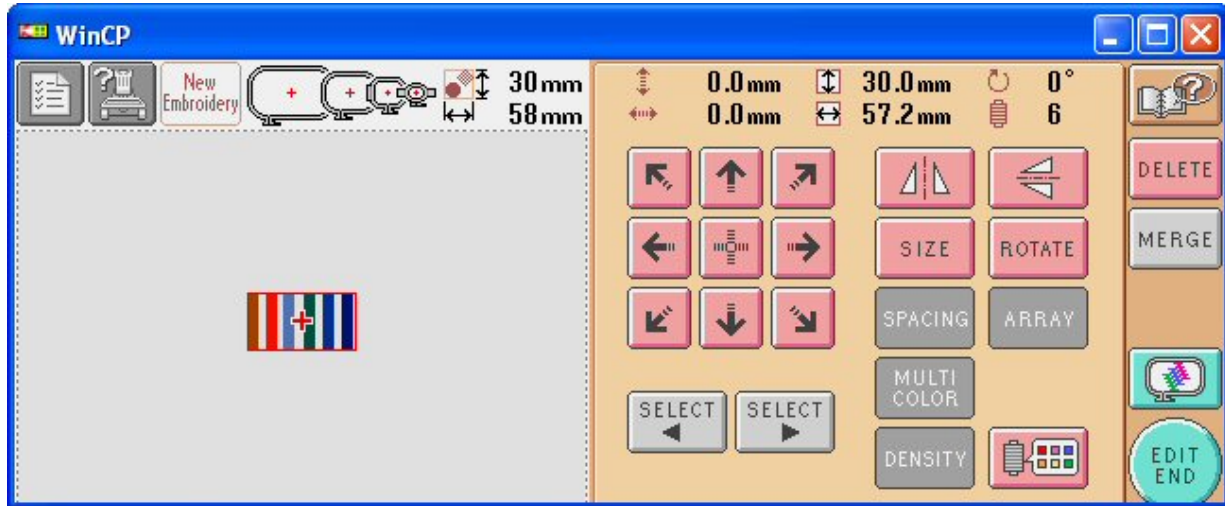
Select the  design. The screen should appear as such:



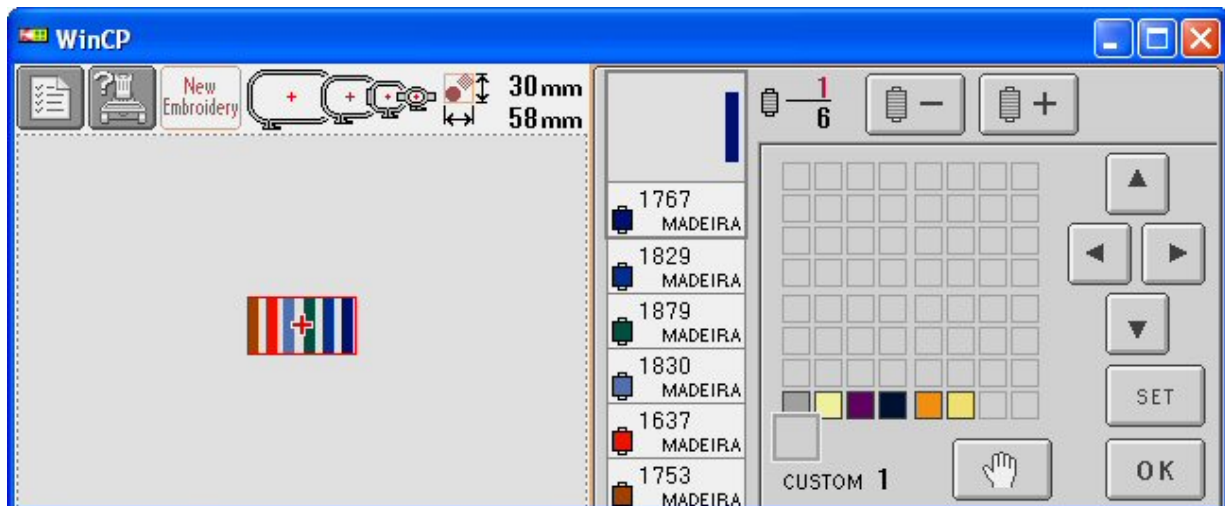


Select the design set key,  once all desired programming has been completed.

The screen should appear as such:



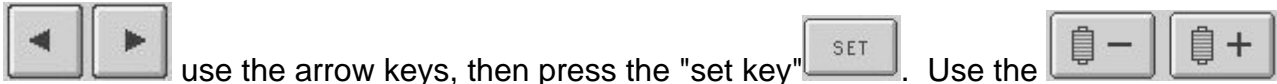
Select the Color Programming key.  The screen should appear as such:



The Custom Thread Palette that you created should be the available palette. The names of the colors shown are the default colors of the Madeira color palette. The colors of the palette are to be considered the needle bars from left to right, with the left most color being needle bar one and the last color, the rightmost, being needle bar six.

This allows the operator to place the spools of thread on the machine wherever desired, and then have the ability to choose the needle bar sewing order, instead of informing the

software where certain colors of spools are placed. If the design were to be programmed with the order of the needle bars 4-1-6-2-5-3, select the fourth color from the left, #1944,



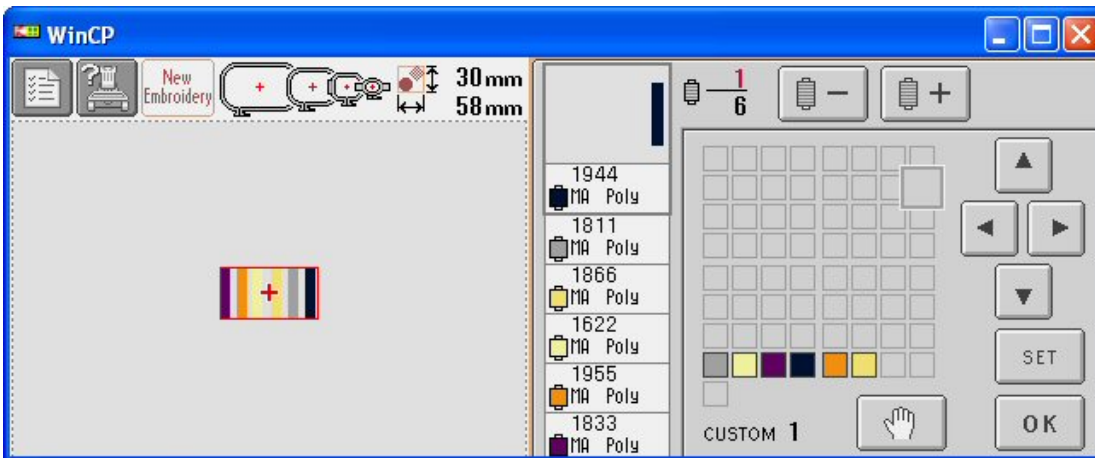
use the arrow keys, then press the "set key". Use the spool keys, to select the next color to program. Program the colors, following the 4-1-6-2-5-3 order desired. You will notice that the first color is "1811", the second is "1622", and as follows, "1833", "1944", "1955", & "1866". These numbers will appear in the box showing the color that you selected. The last two digits of each number will help remind you of the needle bar that you desire, with "11" representing needle bar "1", "22" representing needle bar "2" and "so on".



Return to the first color programmed using the spool keys. The column should appear as such:



Since the last digits shown are "44, 11, 66, 22, 55, 33", the needle bar order will be "4-1-6-2-5-3". The screen should appear as such:



Press the “OK” key .

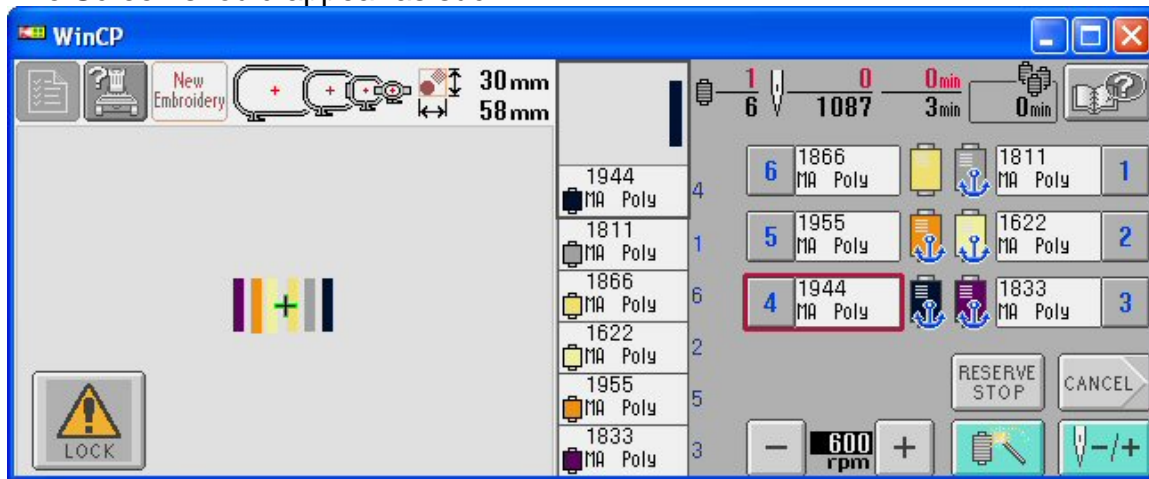
The design color sequence has now been programmed.

Complete all machine preparations as normal.

Press the “Edit End” key  and continue programming as needed.

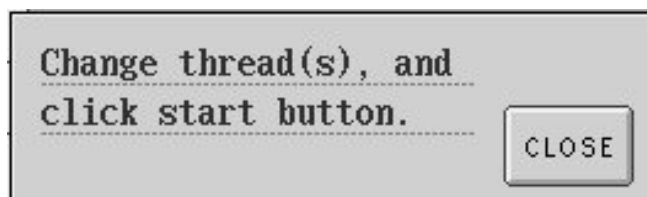
Press the “Sewing” key .

The Screen should appear as such:



Notice to the right of the color sequence boxes, the needle bar to be used is shown.

If this is the first time you program a design using this process, or any time that you return to this process after programming a design in the previous manner, you will be prompted to change threads. The change thread screen should appear as such:



Click on the “Close” key .

You are now ready to begin sewing.

If you have any questions, please contact Brother Technical Service.