



**P-touch**

**PARTS REFERENCE LIST**

**MODEL: PT-1090/1090BK/1090BK2**

**MECHANISMS & ELECTRONICS**

## NOTES FOR USING THIS PARTS REFERENCE LIST

1. When ordering parts, inform us of the following items:

- (1) Code
- (2) Q'ty
- (3) Description
- (4) Symbol (PCB No., Revision, and Parts location mounted on the PCB.)

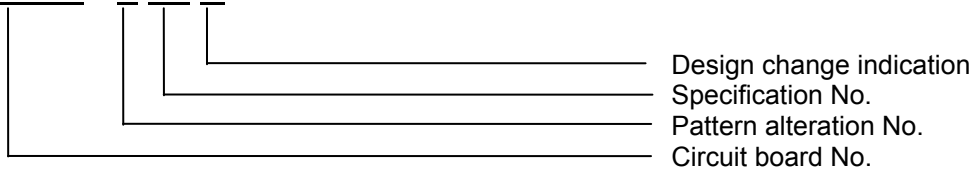
Note : Orders without Parts Code or Tool No. cannot be accepted.

[ Example ]

REF. NO.	SYMBOL	CODE	Q'TY	DESCRIPTION	REMARKS
					R

Revision No. : marked on the printed circuit board.

**B55L139 - 1 01 A**



2. Design-changed parts:

When the parts are design-changed, any one of the following symbols is indicated in the REMARKS column.

- CHNG#A: compatible between old and new
- CHNG#B: replaceable from old to new
- CHNG#D: incompatible
- ADD : newly added

3. Parts marked with an "R" in the REMARKS column are recommended spare parts.

4. The original of this list was made based on the information as of Aug, 2009.

5. Parts are subject to change in design without prior notice.

### COUNTRIES

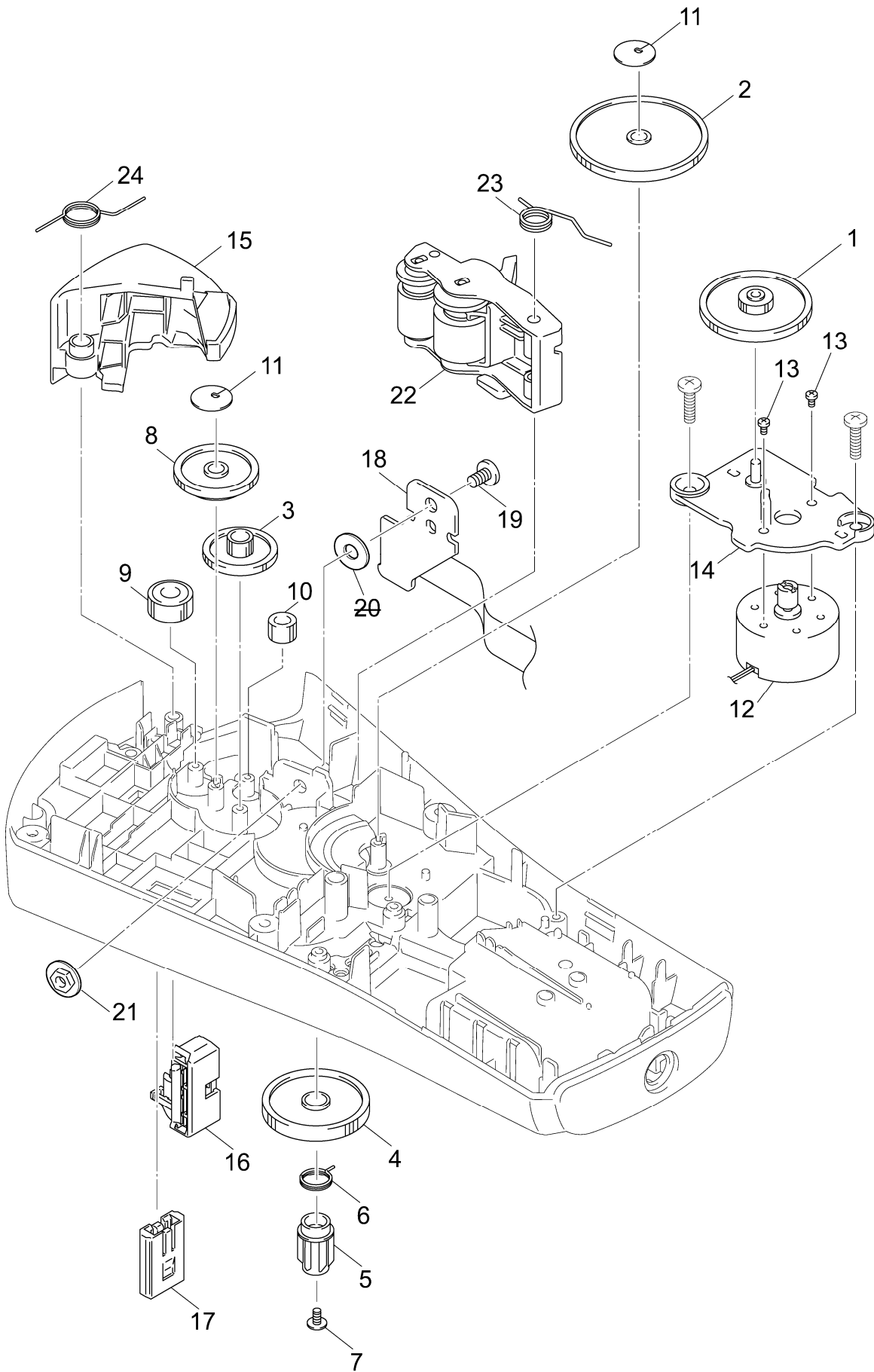
U.S.A ---- USA	France ---- FRA	Australia ---- AUS**
Germany ---- DEU	Netherlands ---- NLD	Spain ---- ESP
Canada ---- CAN	Denmark ---- DNK	Turkey ---- TUR
United Kingdom ---- GBR	Austria ---- AUT	United Arab Emirates ---- ARE

\*\*PT-1090BK2 is the derivative model of PT-1090BK, containing two tape-cassettes, only for Australia.  
 All spare parts for this model are the same as PT-1090BK.  
 Please refer to the description of PT-1090BK for Australia as to PT-1090BK2.

# CONTENTS

1 . PRINT MECHANISM .....	1
2 . COVERS .....	3
3 . MAIN PCB ASSY .....	5
4 . RUBBER KEY .....	7
5 . SENSORS .....	7
6 . PRINTED MATTER .....	9
7 . PACKING MATERIALS .....	11

# 1. PRINT MECHANISM

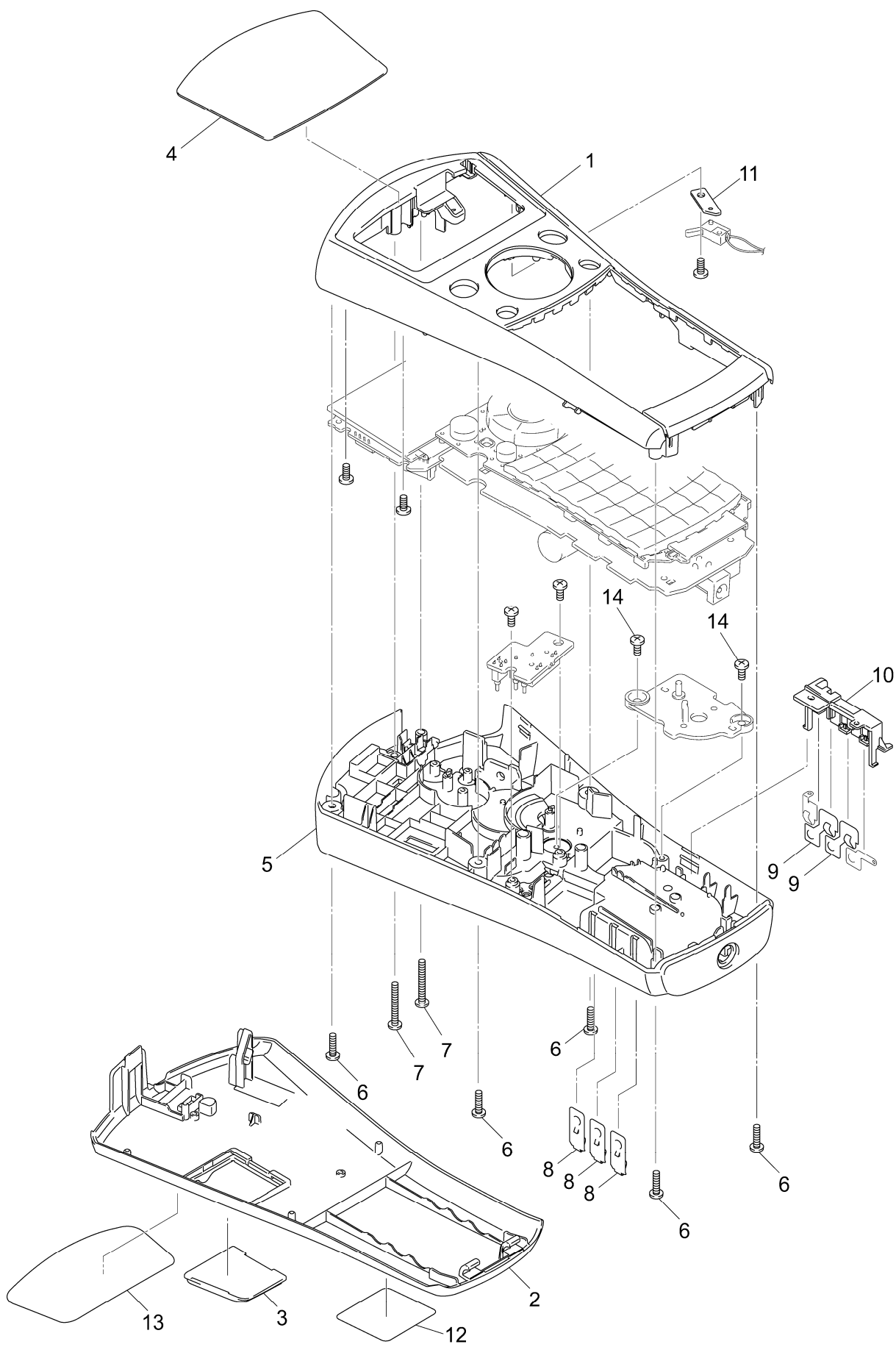


MODEL PT-1090 8V2-358-045

1 . PRINT MECHANISM

REF.NO.	CODE	Q'TY	DESCRIPTION	REMARKS
1	LW3778001	1	DOUBLE GEAR 1 1090	
2	LW3779001	1	DOUBLE GEAR 2 1090	
3	LW3780001	1	DOUBLE GEAR 3 1090	
4	LW3781001	1	RIBBON DRIVE GEAR 1090	
5	LW3782001	1	RIBBON DRIVE CAM 1090	
6	UN3559001	1	RIBBON CLUTCH SPRING	
7	LN8308001	1	PSTITE M2X4 CH	
8	LW3783001	1	DOUBLE GEAR 4 1090	
9	LW3784001	1	TAPE IDLE GEAR 1090	
10	LW3785001	1	P IDLE GEAR 1090	
11	LW3817001	2	WASHER 1090	
12	LN6883001	1	DC MOTOR ASSY 1280 F	
13	UN3640001	2	SCREW PAN 1.7X2.5	
14	LW3786001	1	MOTOR HOLDER 1090	
15	LW3787001	1	CUTTER LEVER 1090 (PT-1090:USA/AUS)	
15	LW3787002	1	CUTTER LEVER 1090 (EXCEPT FOR PT-1090:USA/AUS)	
16	LW4927001	1	CUTTER CASE ASSY 1000	CHNG#B
17	LA3203001	1	BOARD	
18	LW3807001	1	H ASSY KSH64-BB1	
19	LW4558001	1	SCREW PAN (S/P) M3X7 LOCK	
20	<del>026030236</del>	4	<del>WASHER PLAIN M3</del>	DEL
21	LW4818001	1	NUT 3 (P WASHER) M3	CHNG#B
22	LW2639001	1	ROLLER HOLDER ASSY 190	
23	LA3218001	1	ROLLER HOLDER RELEASE SPRING	
24	LW3788001	1	CUTTER LEVER SPRING 1090	

2. COVERS

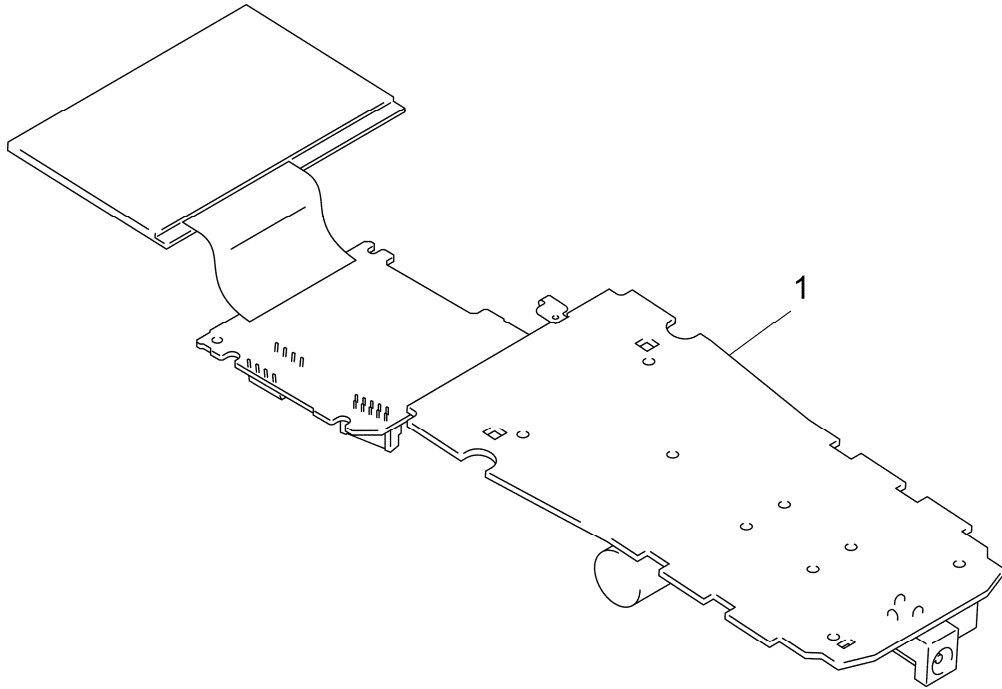


MODEL PT-1090 8V2-358-061

2 . COVERS

REF.NO.	CODE	Q'TY	DESCRIPTION	REMARKS
1	LW3789001	1	UPPER COVER 1090 (PT-1090:USA/AUS)	
1	LW3789002	1	UPPER COVER 1090 (EXCEPT FOR PT-1090:USA/AUS)	
2	LW3790001	1	CASSETTE COVER 1090 (PT-1090:USA/AUS)	
2	LW3790002	1	CASSETTE COVER 1090 (EXCEPT FOR PT-1090:USA/AUS)	
3	LW3791001	1	CASSETTE PANEL 1090	
4	LW3792001	1	LCD PANEL 1090 US (PT-1090:USA/AUS)	
4	LW4038001	1	LCD PANEL 1090BX US (PT-1090BK:USA/AUS/ARE)	
4	LW3831001	1	LCD PANEL 1090 EU (EXCEPT FOR USA/AUS/ARE)	
5	LW3793001	1	BOTTOM COVER 1090 (PT-1090:USA/AUS)	
5	LW3793002	1	BOTTOM COVER 1090 (EXCEPT FOR PT-1090:USA/AUS)	
6	085271017	5	TAPTITE BIND B M2.6X10	
7	085272017	2	TAPTITE BIND B M2.6X20	
8	LW4993000	3	BATTERY TERMINAL A (+ -)	CHNG#B
9	LA3228000	2	BATTERY TERMINAL B (+ -)	
10	LW3794001	1	TERMINAL PRESS COVER 1090	
11	LA8035001	1	SW HOLD PLATE	
12	LW3670001	1	FCC LABEL S (USA)	
12	LW4062001	1	FCC LABEL S CAN (CAN)	
13	LW3819001	1	DECO STICKER 1090 US (USA/AUS/ARE)	
13	LW3832001	1	DECO STICKER 1090 EU (GBR/DEU/CAN/FRA/NLD/DNK/AUT/ESP/TUR)	
14	085270817	2	TAPTITE BIND B M2.6X8	ADD
	LW6836001	1	VOLTAGE LABEL 1090 ARE (ARE)	

3 . MAIN PCB ASSY



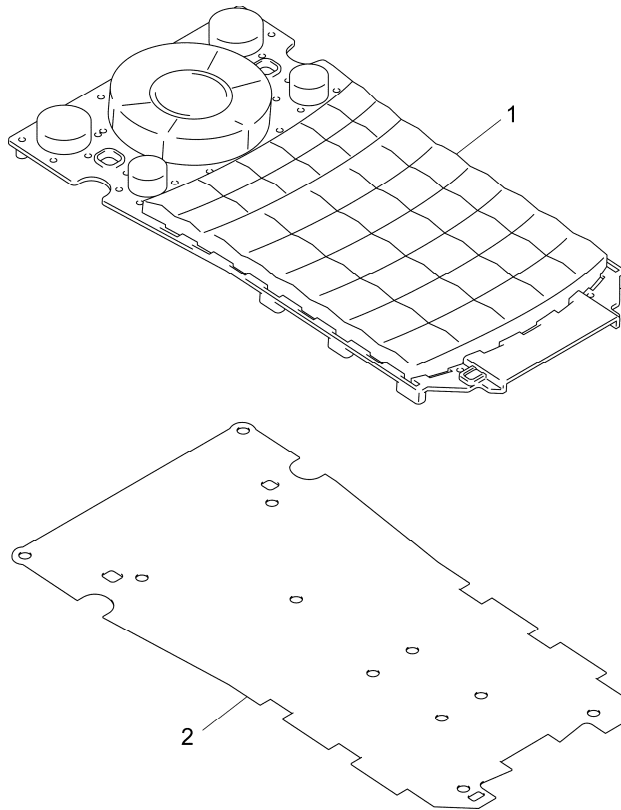
MODEL PT-1090 8V2-358-101



3 . MAIN PCB ASSY

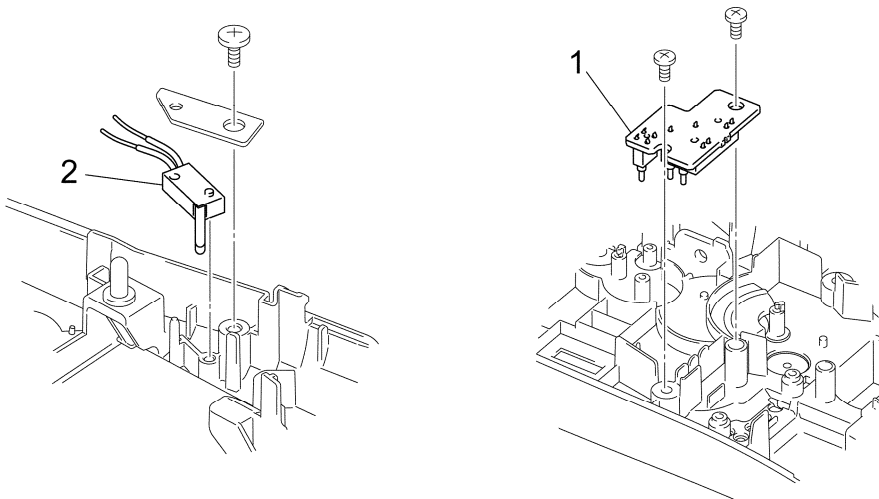
REF.NO.	SYMBOL	CODE	Q'TY	DESCRIPTION	REMARKS
1	B55L280-111C	LW3839001	1	MAIN PCB ASSY PT-1090 (USA)	
1	B55L280-114C	LW3839004	1	MAIN PCB ASSY PT-1090 (DEU)	
1	B55L280-112C	LW3839002	1	MAIN PCB ASSY PT-1090 (CAN/GBR/FRA/NLD/DNK/AUT/AUS/ESP/TUR/ARE)	

#### 4 . RUBBER KEY



MODEL PT-1090 8V2-358-003

#### 5 . SENSORS



MODEL PT-1090 8V2-358-100

4 . RUBBER KEY

REF.NO.	CODE	Q'TY	DESCRIPTION	REMARKS
1	LW3776001	1	RUBBER 52 KEY 1090 US (PT-1090:USA/AUS)	
1	LW3776002	1	RUBBER 52 KEY 1090 US (PT-1090BK:USA/AUS/ARE)	
1	LW3830001	1	RUBBER 52 KEY 1090 EU (EXCEPT FOR PT-1090:USA/AUS, PT-1090BK:USA/AUS/ARE)	
2	LW3777001	1	CONTACT SHEET 1090	

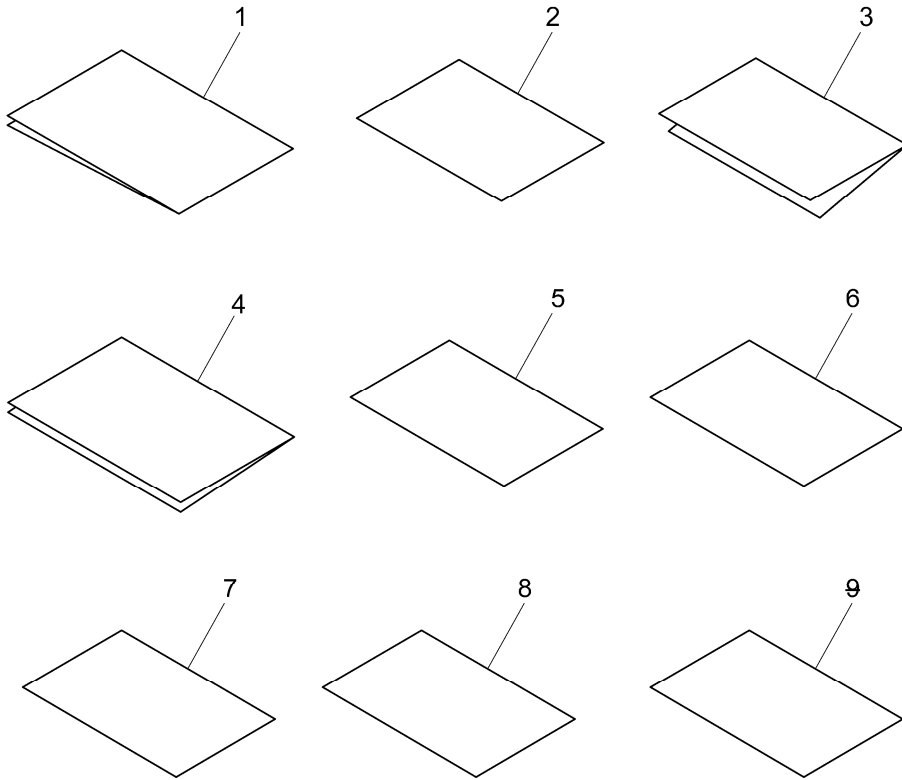
MODEL PT-1090 8V2-358-003

5 . SENSORS

REF.NO.	SYMBOL	CODE	Q'TY	DESCRIPTION	REMARKS
1	B55L242	LW3837001	1	CASSETTE SENSOR PCB ASSY 1090	
2		LW3846001	1	CUTTER SENSOR ASSY 1090	

MODEL PT-1090 8V2-358-100

6 . PRINTED MATTER

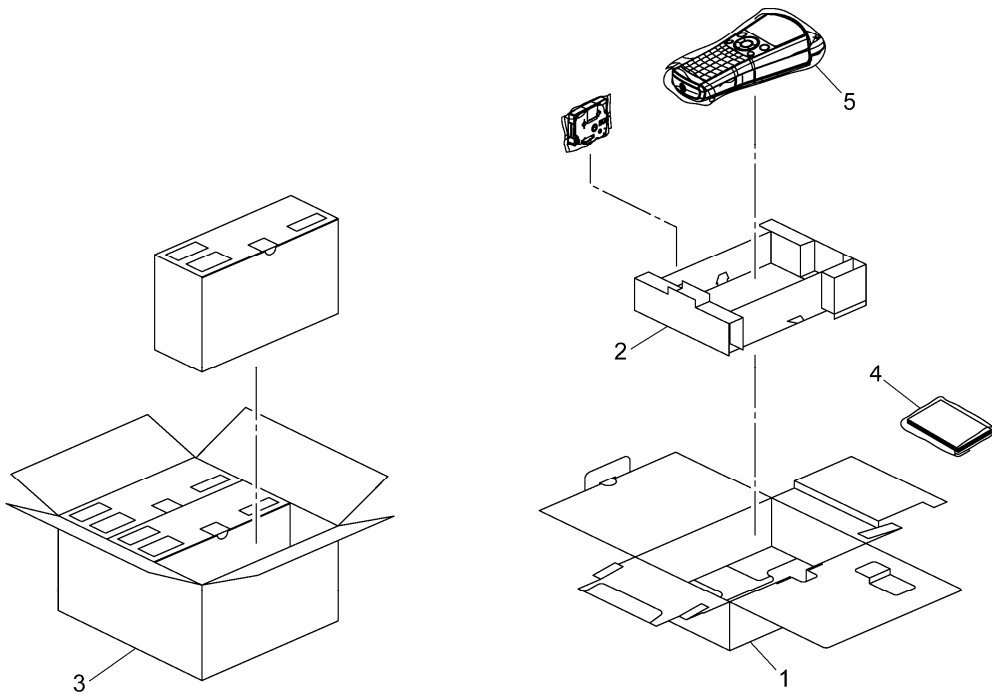


## 6 . PRINTED MATTER

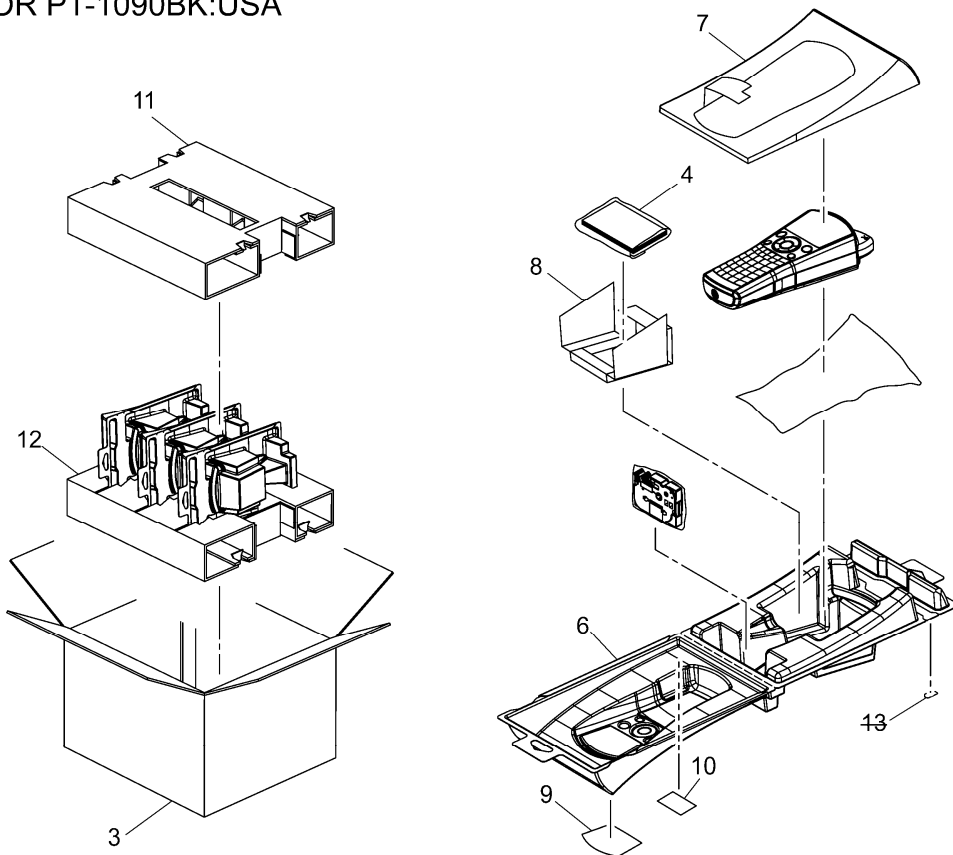
REF.NO.	CODE	Q'TY	DESCRIPTION	REMARKS
1	LW4113001	1	USER'S MANUAL 1090 US (USA)	
1	LW4442001	1	USER'S MANUAL 1090 GER (DEU/NLD/AUT)	
1	LW4115001	1	USER'S MANUAL 1090 CAN (CAN)	
1	LW4441001	1	USER'S MANUAL 1090 ENG.UK (GBR/AUT)	
1	LW4443001	1	USER'S MANUAL 1090 FRE/DUT (FRA/NLD)	
1	LW4449001	1	USER'S MANUAL 1090 ITA (NLD)	
1	LW4447001	1	USER'S MANUAL 1090 NOR/SWE (DNK)	
1	LW4448001	1	USER'S MANUAL 1090 FIN/DAN (DNK)	
1	LW4444001	1	USER'S MANUAL 1090 CZE/POL/HUN (AUT)	
1	LW4445001	1	USER'S MANUAL 1090 CR/RO/SK/SL (AUT)	
1	LW4118001	1	USER'S MANUAL 1090 AUS (AUS/ARE)	
1	LW4446001	1	USER'S MANUAL 1090 SPA/POR (ESP)	
1	LW4581001	1	USER'S MANUAL 1090 TUR (TUR)	
2	LW4114001	1	INSERTION 1090 US	
3	LW8644001	1	TZE TAPE CATALOG USA (USA)	CHNG#B
3	LW7733001	1	TAPE CATALOG OFFICE A (DEU/GBR/FRA/NLD/ESP)	ADD
3	LW7734001	1	TAPE CATALOG OFFICE B (DNK)	ADD
3	LW7735001	1	TAPE CATALOG OFFICE C (AUT)	ADD
3	LW3931001	1	TAPE CATALOG EU (DEU/GBR/FRA/NLD/DNK/AUT/ESP/TUR)	
3	LN7630001	1	TAPE CATALOG AUS (AUS/ARE)	
4	LN9325001	1	WARRANTY CARD USA CH (USA)	
4	LW3356001	1	1YEAR WARRANTY CARD CAN (CAN)	
4	LM4756001	1	WARRANTY CARD IRE (GBR)	
4	LW2661001	1	WARRANTY CARD FRA (FRA)	
4	LW3135001	1	CEE WARRANTY CARD (AUT)	
4	LJ5400001	1	WARRANTY CARD SPA (ESP)	
4	LM2652001	1	WARRAANTY CARD POR (ESP)	
4	LA1661001	1	WARRANTY CARD EURO CH (GBR/FRA/NLD/DNK/ESP)	
5	LW2157001	1	3YEAR WARRANTY CARD UK (GBR)	
6	LN9950001	1	ACCESSORY ORDER FORM LIST (USA)	
6	LA7938001	1	1180 ACCESSORY ORDER FORM CACH (CAN)	
7	LN6297001	1	REGISTER INSERTION US CH (USA)	
8	LW7758001	1	WEEE & BATTERY INSERTION EU (DEU/GBR/FRA/NLD/DNK/AUT/ESP/TUR)	CHNG#B
9	<del>LW4027001</del>	4	<del>BATTERY INSERTION CHE (NLD)</del>	
	LW7424001	1	ADAPTER INSERTION ARGENTINA (ESP)	ADD
	LW8796001	1	TURKISH DOC INSERTION PT-1090 (TUR)	

7 . PACKING MATERIALS

PT-1090BK:USA



EXCEPT FOR PT-1090BK:USA



MODEL PT-1090 8V2-358-930

## 7 . PACKING MATERIALS

REF.NO.	CODE	Q'TY	DESCRIPTION	REMARKS
1	LW4035001	1	CARTON 1090BX US (PT-1090BK:USA)	
2	LW4036001	1	BODY PAD 1090BX (PT-1090BK:USA)	
3	LW4037001	1	CARTON (X3) PT1090BX US (PT-1090BK:USA)	
3	LW3825001	1	CARTON (X3) PT1090 US (CAN/AUS/ARE)	
3	LW4454001	1	CARTON (X3) PT1090 EU (DEU/GBR/FRA/NLD/DNK/AUT/ESP/TUR)	
4	LW5701001	1	PE BAG 134X170	CHNG#B
5	LA5168001	1	BAG 280X410H (PT-1090BK:USA)	
6	LW3820001	1	CLAM SHELL 1090 (EXCEPT FOR PT-1090BK:USA)	
7	LW7980001	1	COMMERCIAL SHEET 1090 US (PT-1090:USA)	CHNG#B
7	LW4116001	1	COMMERCIAL SHEET 1090 CA (CAN)	
7	LW4451001	1	COMMERCIAL SHEET 1090 FRA/NLD (FRA/NLD)	
7	LW4119001	1	COMMERCIAL SHEET 1090 AUS (AUS/ARE)	
7	LW4450001	1	COMMERCIAL SHEET 1090 EU (DEU/GBR/DNK/AUT/ESP/TUR)	
8	LW7981001	1	APPLICATION CARD 1090 US (PT-1090:USA)	CHNG#B
8	LW4117001	1	APPLICATION CARD 1090 CA (PT-1090BK:CAN)	
8	LW4120001	1	APPLICATION CARD 1090 AUS (AUS/ARE)	
8	LW4452001	1	APPLICATION CARD 1090 EU (DEU/GBR/FRA/NLD/ DNK/AUT/ESP/TUR)	
9	LW3824001	1	LCD MYLAR LABEL 1090 US (PT-1090:USA, PT-1090BK:AUS/ARE)	
9	LW3833001	1	LCD MYLAR LABEL 1090 EU (DEU/GBR/FRA/NLD/ DNK/AUT/ESP/TUR)	
10	LW3751001	1	3YR GUARANTEE MYLAR LABEL GER (DEU)	
11	LW3826000	1	PAD UPPER 1090 (EXCEPT FOR PT-1090BK:USA)	
12	LW3827000	1	PAD LOWER 1090 (EXCEPT FOR PT-1090BK:USA)	
13	<del>LW1820001</del>	4	<del>EASY OPEN LABEL (PT-1090:USA)</del>	
	LN6939001	1	AUSTRIA LABEL SMALL (AUT)	
	UN8891001	1	C-TICK MARK (AUS)	
	LW3751001	1	3YR GUARANTEE MYLAR LABEL GER	
	LW4731001	1	TURKEY LABEL 1090 (TUR)	

MODEL PT-1090 8V2-358-930

**brother**®

Aug, 2009  
PL-PT024

Ver. B-1