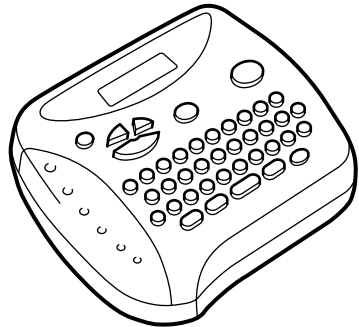


# P-touch

## MODEL PT-1180 USER'S GUIDE



**TZ  
TAPE**

At your side.

# brother

LA7895001  
Printed in China

Patent numbers and patent publication numbers which are related to this product are as below:  
 USPA4839472 USPA983058 USP5120147  
 USPA4927278 USP5009530  
 USP4976558 USP5069557

This equipment has been tested and found to comply with the limits for a Class B digital device, pursuant to Part 15 of the FCC Rules. These limits are designed to provide reasonable protection against harmful interference in a residential installation. This equipment generates, uses, and can radiate radio frequency energy and, if not installed and used in accordance with the instructions, may cause harmful interference to radio communications. However, there is no guarantee that interference will not occur in a particular installation. If this equipment does cause harmful interference to radio or television reception, which can be determined by turning the equipment off and on, the user is encouraged to try to correct the interference by one or more of the following measures:  
 - Reorient or relocate the receiving antenna.  
 - Increase the separation between the equipment and receiver.  
 - Connect the equipment to an outlet on a circuit different from that to which the receiver is connected.  
 - Consult the dealer or an experienced radio/TV technician for help.  
 - Changes or modifications not expressly approved by Brother Industries, Ltd. could void the user's authority to operate the equipment.

### FCC NOTICE

With your new P-Touch PT-1180, you can create labels for any application. Select from the many frames, character sizes and styles to design beautiful custom labels. In addition, the variety of tape cartridges available allows you to print labels with different widths and exciting colors. You no longer have to worry about urgent tasks that require professional printing. In the office, the factory, the lab or the home, the quality and performance of the PT-1180 make it an extremely practical machine. Although this machine is easy to use, we suggest that you read this manual carefully before starting and keep the manual in a handy place for future reference.

### GENERAL PRECAUTIONS

- Use only Brother TZ tapes with this machine. Do not use tapes that do not have the **TZ** mark.
- Tapes are available in three different widths: 1/4" (6 mm), 3/8" (9 mm) and 1/2" (12 mm).
- Do not pull the tape since this may damage the tape cassettes.
- Do not attempt to cut the tape while printing or feeding since this will damage the tape.
- Do not clean the machine with alcohol or other organic solvents. Use only a soft, dry cloth.
- Remove the batteries if you do not intend to use the machine for an extended period of time.
- **Note:** If power is disconnected for more than three minutes, all text shown in the display and any text files stored in the memory will be lost.
- Do not put any foreign objects into or anything on the machine.
- Do not expose the machine to high temperatures or high humidity. Never leave it on the dashboard or in the back of your car.
- Do not use the machine in dusty places, and keep it out of both direct sunlight and rain.
- Do not leave any rubber or vinyl on the machine for an extended period of time. Doing so may cause staining.
- After inserting a new tape cassette, advance the tape by holding down **Code** and pressing **Print** once.
- Do not touch the print head mechanism. If the head is touched, clean it immediately with a soft wipe (e.g., a cotton swab) to avoid permanent damage.
- To avoid injuries, do not touch the cutter's edge.
- To prevent damage during shipment, a clear protective sheet is placed over the LCD panel. Remove this clear protective sheet before beginning use.

### POWER SUPPLY

#### CAUTION

Batteries installed incorrectly can overheat and leak. Can result in chemical burns and machine overheating and damage.

Your machine requires 6 alkaline AAA batteries. Carefully follow these instructions.

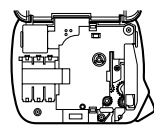
- 1 Press bumps on top of back cover and open.
- 2 Pull out tape cassette, if one was installed.
- 3 Remove batteries, if they were already installed.
- 4 Hold machine as pictured:
- 5 Insert six new batteries as follows:

#### Always:

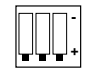
- Insert "+" ends before "-" ends.
- Remove "-" ends before "+" ends.
- Replace all 6 batteries at the same time with new ones.

- 6 Insert tape cassette.
- 7 Insert two hooks on bottom end of back cover into slots on bottom of machine. Push down firmly on cover until it snaps into place.
- 8 Turn machine on.

If no power, immediately remove batteries and call Brother Customer Service at: 1-877-478-6824



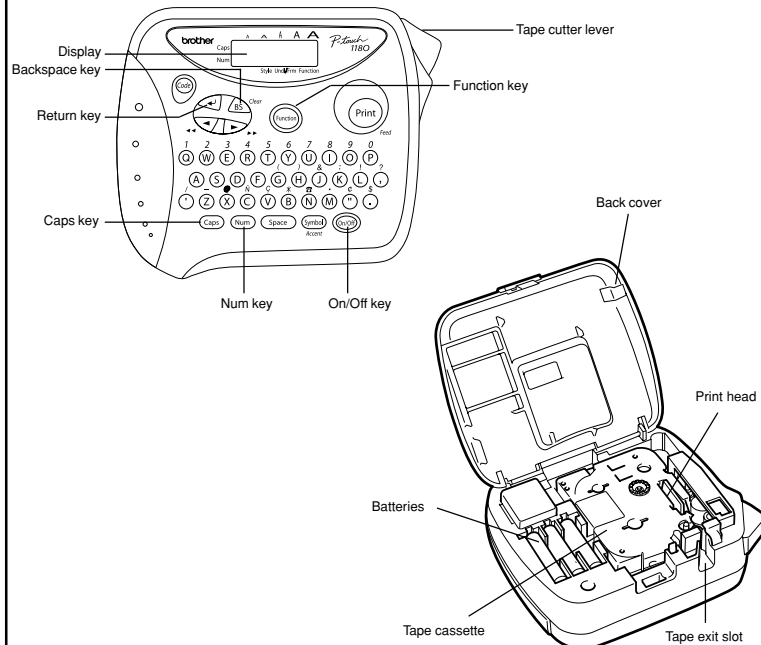
FIRST, in LOWER layer insert "+" ends pointing DOWN.



SECOND, in UPPER layer insert "+" ends pointing UP.



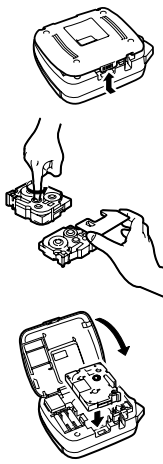
### OVERVIEW



### TAPE CASSETTES

A TZ tape cassette is supplied with this unit. The Brother TZ tapes used with this machine are available in a variety of colors and three tape widths (1/4" (6 mm), 3/8" (9 mm) and 1/2" (12 mm)).

- 1 Press in on the rough area at the top end of the machine and fold open the back cover.
- 2 If a tape cassette is already installed, remove it by pulling it straight up.
- 3 If the ink ribbon in the other tape cassette is loose, use your finger to wind the toothed wheel in the direction of the arrow on the cassette until there is no slack in the ribbon. Also, make sure that the end of the tape feeds under the tape guides.  
**Note:** If you are using a new tape cassette provided with a stopper, be sure to remove the stopper.
- 4 Insert the tape cassette firmly into the compartment, making sure that the entire back of the cassette contacts the bottom of the compartment.  
**Note:** When inserting a tape cassette, make sure that the inner ribbon does not catch on the corner of the metal guide.
- 5 Securely close the back cover, making sure that it snaps into place.
- 6 Feed the tape by holding down **Code** and pressing **Print** once, and then push in the tape cutter lever to cut the tape.



### LETTERING STICK

The enclosed lettering stick enables you to easily remove the backing from labels printed on laminated tapes.

- 1 Hold the tape in your left hand, with the printed surface facing up, and hold the stick in your right hand.
- 2 Pass the tape halfway through the long narrow hole in the stick.
- 3 Turn the stick three-quarters of a turn towards you and pull the stick away from you as shown below.
- 4 Peel off the label backing.



### STARTING

Press **Code**. If batteries have been installed or the machine has been plugged in using the optional AC adapter, the previous session's information is displayed when the machine is turned on. This feature allows you to stop work on a label and turn off the machine, then return to it later without having to re-enter the text.

The machine automatically turns off if no key is pressed within five minutes. The current session's information is stored in the machine's internal memory and displayed when the machine is later turned on again.

### CODE KEY

By holding down **Code** and pressing a key with a function, character or accent written above it, you can use the corresponding function or add the corresponding character to your text.

### CAPS KEY

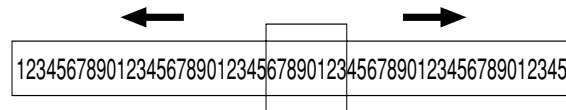
By pressing **Caps** to enter **Caps** mode, you can add upper-case letters to your text by simply pressing the character keys. When this mode is on, the **Caps** indicator in the top-left corner of the display comes on. To exit **Caps** mode, press **Caps** until the **Caps** indicator goes off.

### NUM KEY

By pressing **Num** to enter **Num** mode, you can add numbers to your text by simply pressing the corresponding keys. When this mode is on, the **Num** indicator in the bottom-left corner of the display comes on. To exit **Num** mode, press **Num** until the **Num** indicator goes off.

### DISPLAY

This machine's LCD shows one row of 8 characters; however, the text that you enter can be up to 55 characters in length. The 8-character display is like a window which moves across the text.



### CURSOR MOVEMENT

You can view and edit different parts of the text by moving the cursor backward and forward.

- To move the cursor one character at a time, press **Left Arrow** or **Right Arrow**.
- To move the cursor to the beginning of the text, hold down **Code** and press **Left Arrow**.
- To move the cursor to the end of the text, hold down **Code** and press **Right Arrow**.

### BACKSPACE KEY

This key can be used to remove characters from your text, clear all of the text or cancel the current function and return to the text input mode.

- To delete the character to the left of the cursor or to cancel a function, press **BS**.
- To clear all of the text that is currently entered, hold down **Code** and press **BS**.

### SPACE KEY

As on a word processor, press **Space** to add a blank space to your text.

### RETURN KEY

Press **Return** when you wish to accept or confirm a setting, or end the first line of text and start the second.

- To add a second line, press **Return** once. The return mark (↵) appears in the text to indicate the end of the first line and the beginning of the second.  
**Note:** Two lines of text can only be entered if 3/8" (9-mm)- or 1/2" (12-mm)-wide tape is installed.
- To accept or confirm a setting from a list, press **Return** once.

### ACCENTED CHARACTERS

You can also choose from a list of other accented characters that can be added to your text.

Letter	Accented character	Letter	Accented character
A	À Á Â Ã Ä Å Æ	a	à á â ã ä å æ
C	Ç	c	ç
E	È É Ê Ë Ì Í Î Ï	e	è é ê ë ì í î ï
I	Í Î Ï	i	í î ï
N	Ñ	n	ñ
O	Ó Ô Õ Ö Ø	o	ó ô õ ö ø
U	Ú Û Ü Ý ù	u	ú û ü ý ù

- 1 Press **Caps** if you want the accented character to be an uppercase letter.  
**Note:** To quit the following procedure at any time without making any changes, press **BS**.
- 2 Hold down **Code** and press **Symbol/Accent**. The message "A-U?" appears in the display.
- 3 Press the key for the letter in the accented character that you wish to add, and then press **Left Arrow** and **Right Arrow** until the cursor is positioned under the desired accented character.
- 4 Press **Return** to add the selected character to your text.

### SYMBOLS

In addition to the letters, symbols, and numerals on and above the keys, there are 72 symbols available with the **Symbol** function. These symbols are divided into 9 groups, corresponding to the letters A through I.

Group	Symbols
A	Û ü Ç ç Æ æ á é
B	í ó ù ★ Å å ¢
C	Ó ô Ñ ñ Ì Ì \$ #
D	· ° ; % + × =
E	\$ ¢ [ ] ^ _
F	TM ® © ☎ ☎ ☎ ☎
G	☎ ☎ ☎ ☎ ☎ ☎ ☎ ☎
H	☎ ☎ ☎ ☎ ☎ ☎ ☎ ☎
I	↑ ↓ → ← E8 88 -

- 1 Press **Symbol/Accent**. The message "A-I?" appears in the display.
- 2 Press the key for the letter of the group containing the symbol that you wish to add, and then press **Left Arrow** and **Right Arrow** until the cursor is positioned under the desired symbol.
- 3 Press **Return** to add the symbol to the text.

# INTRODUCTION

