



PARTS REFERENCE LIST

MODEL: PT-300(For U.S.A.)/PT-300WHC/PT-1700

MECHANISMS & ELECTRONICS

NOTE FOR USING THIS PARTS REFERENCE LIST

1. In the case of ordering parts, it needs mentioning the following items:

- (1) Code
- (2) Q'ty
- (3) Description
- (4) Symbol (PCB No., Revision, and Parts location mounted on the PCB.)

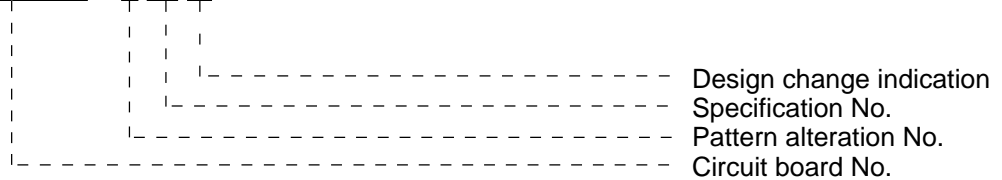
Note : No orders without Parts Code or Tool No. can be accepted.

< Example >

REF.NO.	SYMBOL	CODE	Q'TY	DESCRIPTION	REMARKS

Revision No. : marked on the printed circuit board.

B48K056 - 201A



2. Design-changed parts:

If the parts are changed, any one of the following symbols is indicated in the REMARKS column.

- #A : compatible between old and new
- #B : replaceable from old to new
- #D : incompatible
- # : newly established

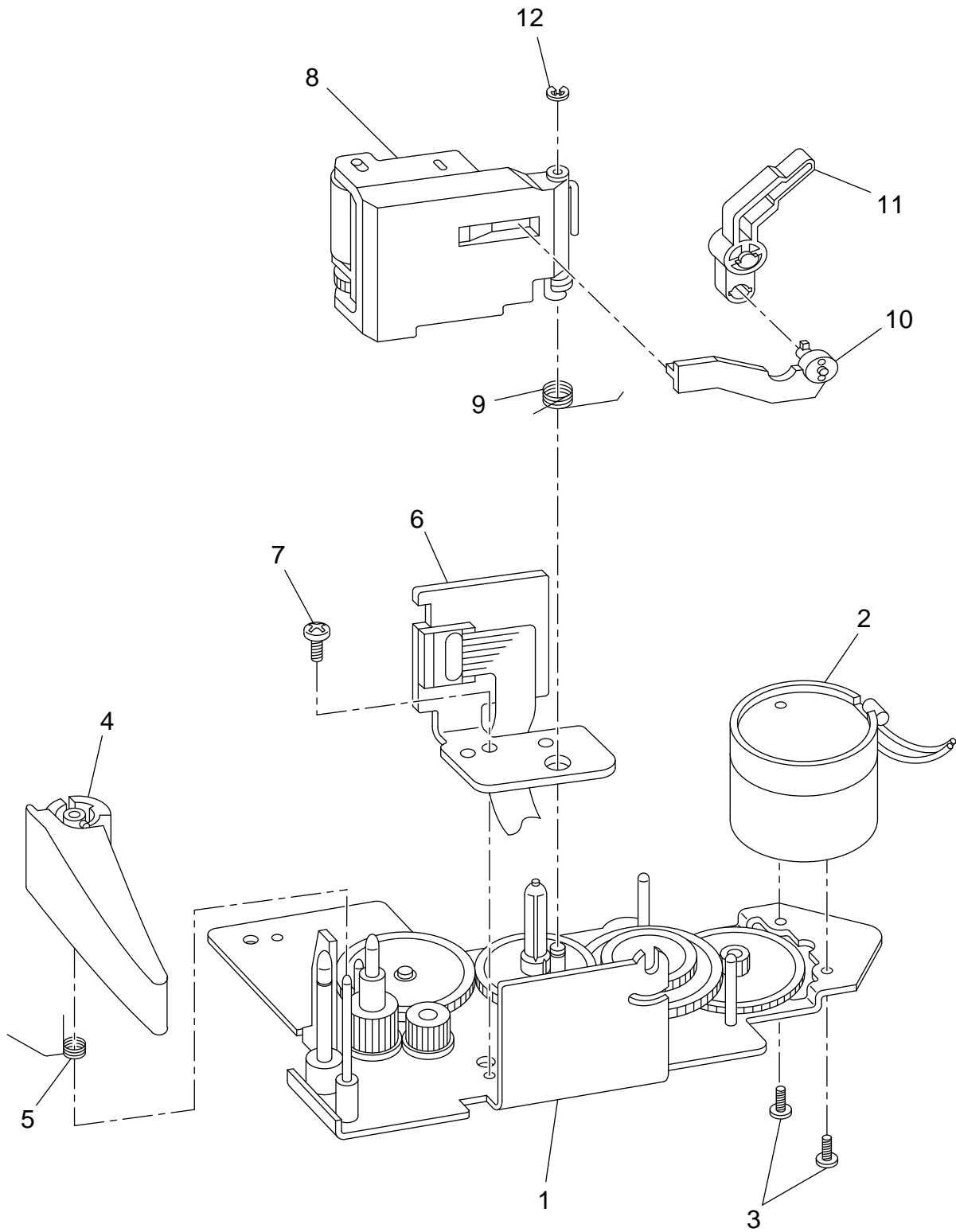
3. The original of this list was made based on the information available in February 1996.

4. Parts are subject to change in design without prior notice.

CONTENTS

1. PRINT MECHANISM	1
2. COVERS	3
3. KEY PAD	5
4. SENSOR	5
5. MAIN PCB	7
6. POWER SUPPLY PCB	9
7. PRINTED MATTER	9
8. PACKING MATERIALS	11

1 . PRINT MECHANISM



MODEL PT-300/PT-300WHC (USA) 8V2-301-045

1 . PRINT MECHANISM

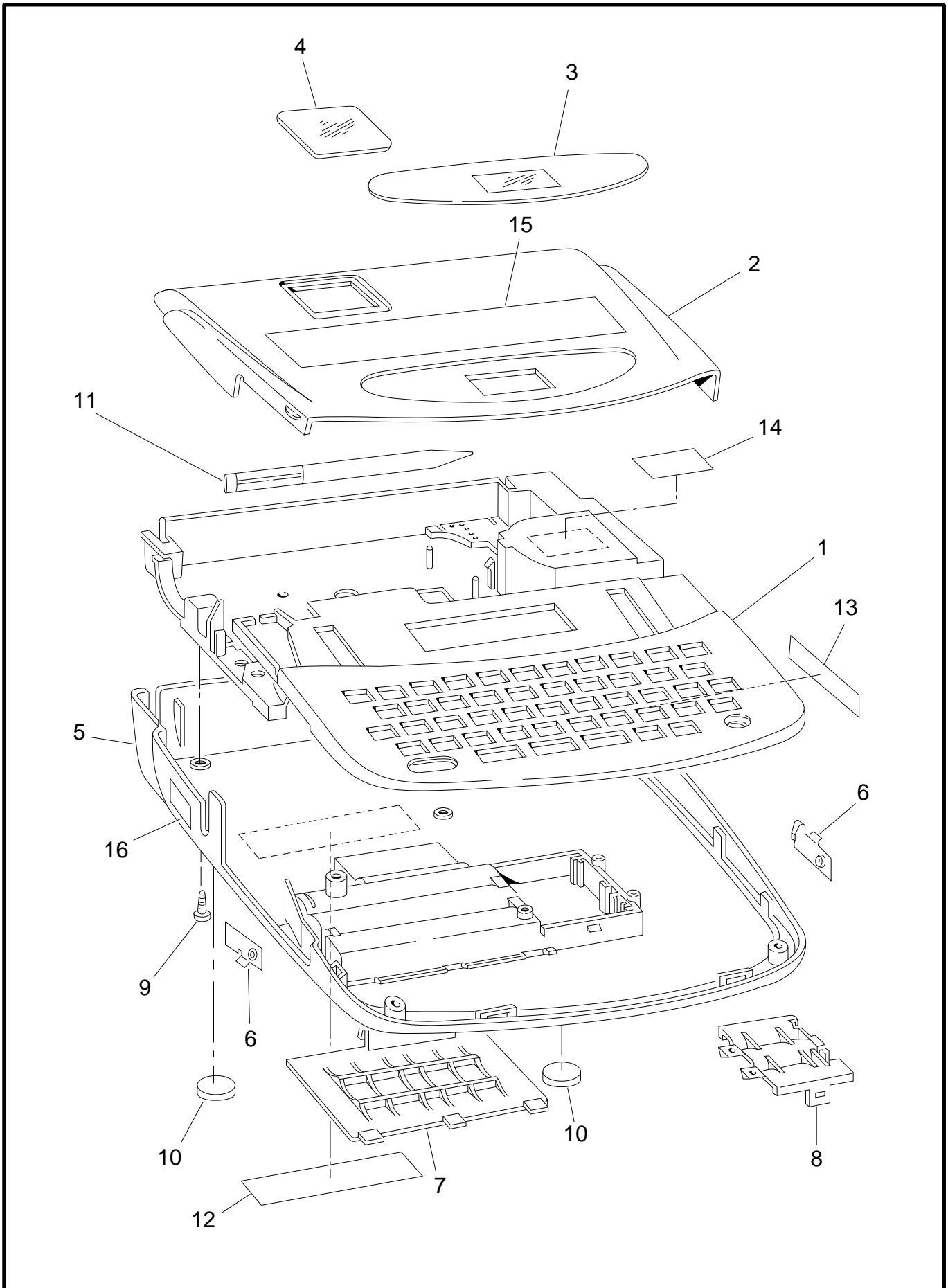
PT99031

REF.NO.	CODE	Q'TY	DESCRIPTION	REMARKS
1	UN0352001	1	CHASSIS ASSY PT300	
2	UN0370001	1	DC MOTOR ASSY PT300	
3	UB3848001	2	SCREW, PAN M2.6X3.5	
4	UN0373030	1	CUTTER LEVER, PT300	
4	UN0373025	1	CUTTER LEVER, PT1700	ADD
5	UN0374001	1	RELEASE SPRING	
6	UN0369001	1	HEAD ASSY KV6418(SP)	
7	060300415	1	SCREW, BIND M3X4	
8	UN0382001	1	ROLLER HOLDER ASSY PT300	
9	UN0392001	1	ROLLER HOLDER SPRING	
10	UN0393001	1	ROLLER RELEASE ROD 300	
11	UN0394001	1	ROLLER RELEASE LEVER 300	
12	048020346	1	RETAINING RING, E2	

MODEL PT-300/PT-300WHC /PT-1700 8V2-301-045

2 . COVERS

PT97016



Original

MODEL PT-300/PT-300WHC (USA) 8V2-301-061

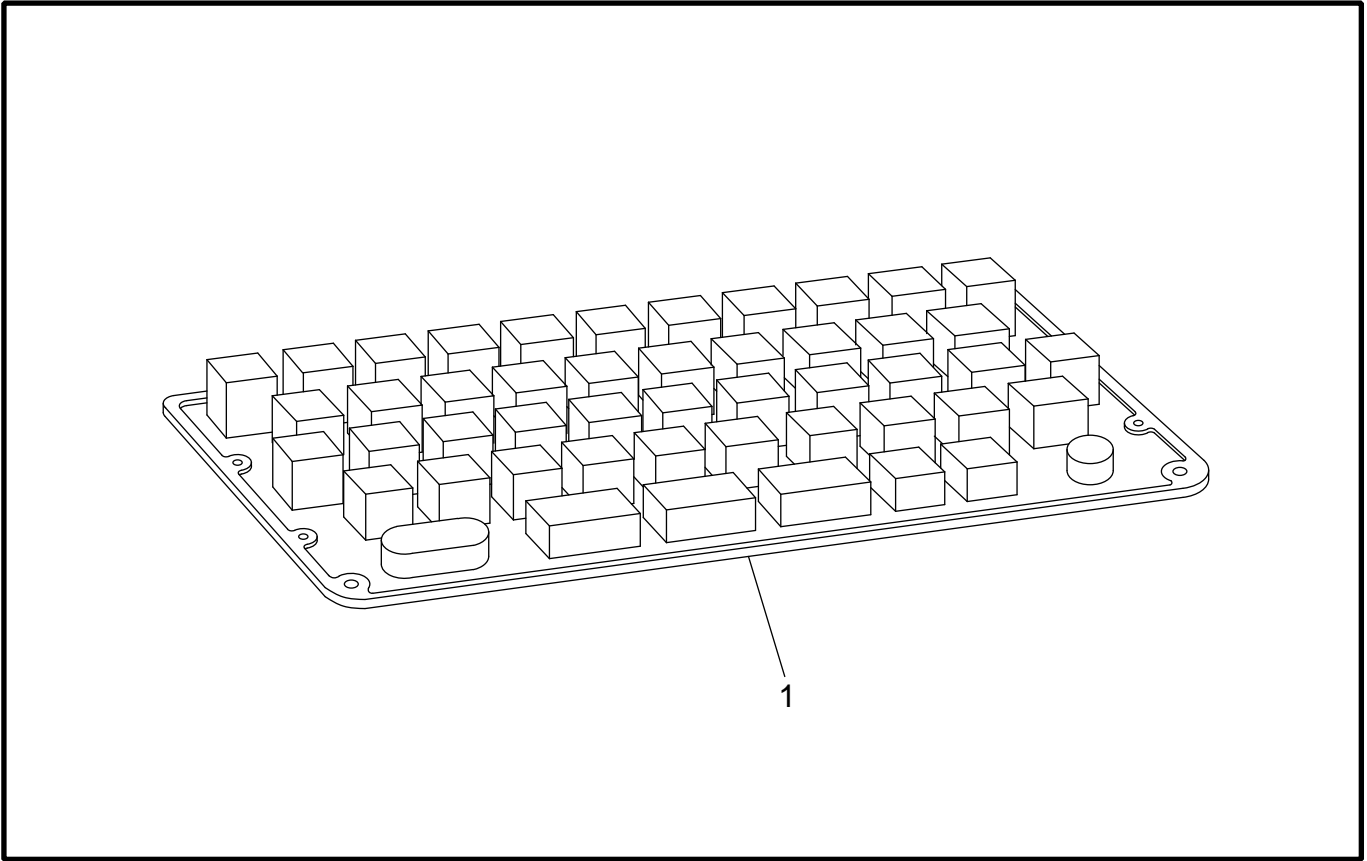
2 . COVERS

PT99031

REF.NO.	CODE	Q'TY	DESCRIPTION	REMARKS
1	UN0162019	1	BODY COVER 300US, PT300	
1	LA0595001	1	BODY COVER 1700US, PT1700	ADD
2	UN0163005	1	CASSETTE COVER 300US, PT300	
2	LA0462001	1	CASSETTE COVER 1700US, PT1700	ADD
3	UN0164001	1	LCD PANEL 300US	
4	UN0497006	1	TAPE PANEL US	
5	UN0433019	1	BOTTOM COVER 300, PT300	
6	UB3719000	2	BATTERY TERMINAL	
7	UN0400019	1	BATTERY LID, GRAY1251	
8	UN0401019	1	BLIND COVER, GRAY1251	
9	085270617	6	TAPTITE, BIND B M2.6X6	
10	UB4431001	2	BASE PLATE FOOT	
11	UN0733022	1	LETTERING STICK TZ, GRAY1252	
12	UB0022001	1	FCC LABEL, USA	
13	UB7372001	1	ADAPTER CAUTION LABEL	
14	UN0700001	1	LEVER CAUTION LABEL	
15	UN0168001	1	MYLAR LABEL PT300	
15	LA0444001	1	MYLAR LABEL PT1700	ADD
16	UN0732001	1	CAUTION LABEL MID	

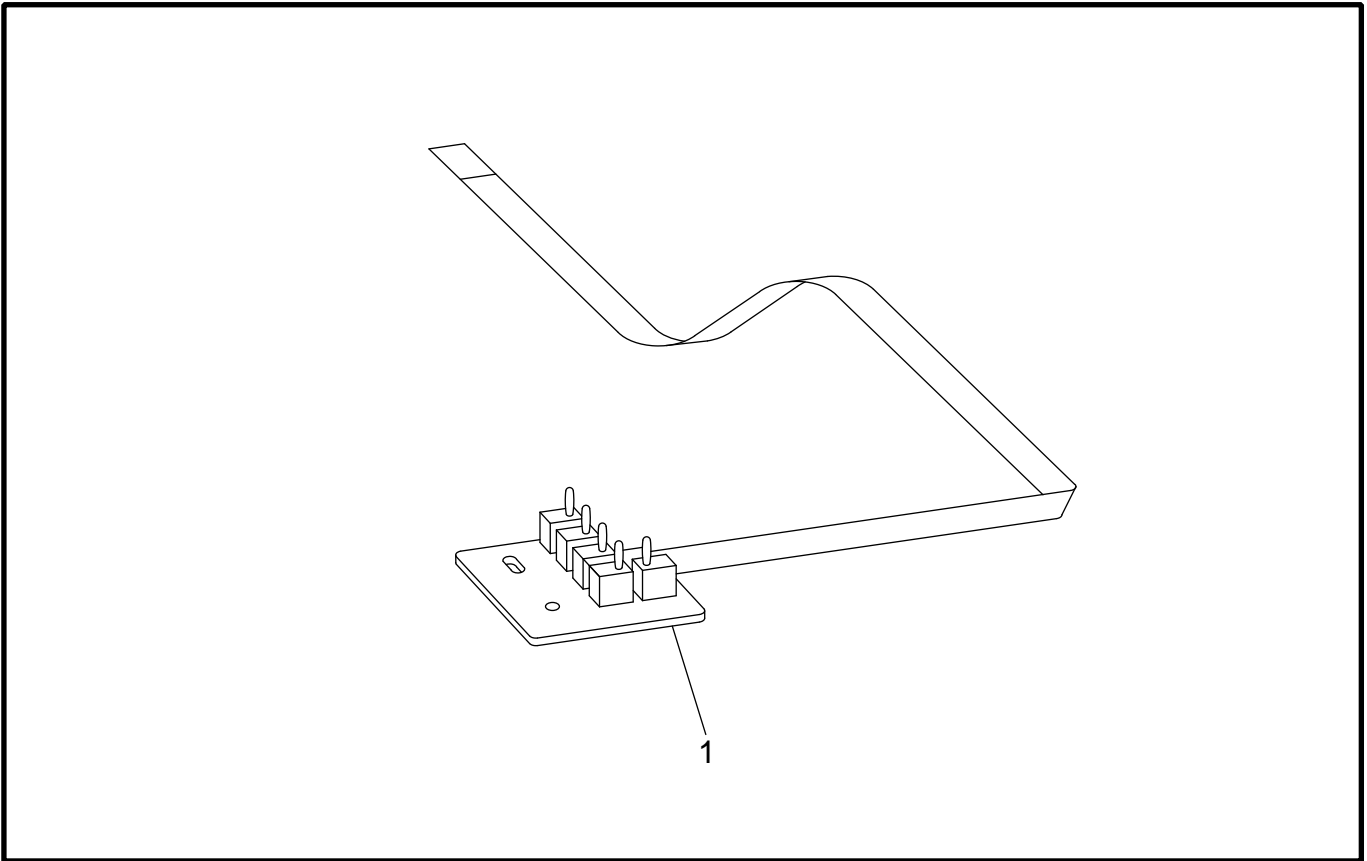
MODEL PT-300/PT-300WHC/PT-1700 8V2-301-061

3 . KEY PAD



MODEL PT-300/PT-300WHC (USA) 8V2-301-003

4 . SENSOR



MODEL PT-300/PT-300WHC (USA) 8V2-301-100

3 . KEY PAD

PT99031

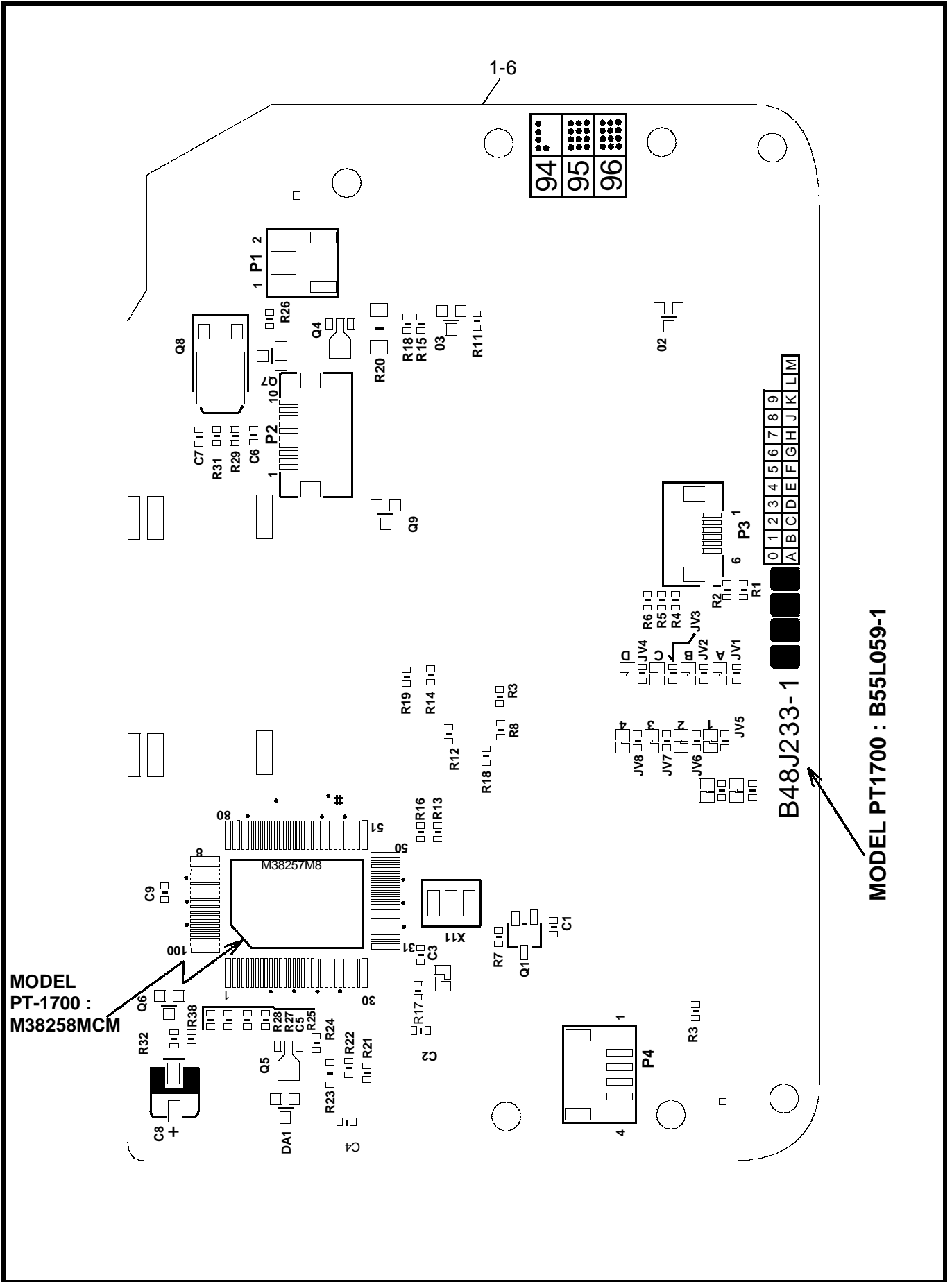
REF.NO.	CODE	Q'TY	DESCRIPTION	REMARKS
1	UN0161001	1	RUBBER 49 KEY US, PT300	ADD
1	UN0161002	1	RUBBER 49 KEY US, PT1700	

MODEL PT-300/PT-300WHC/PT-1700 8V2-301-003

4 . SENSOR

REF.NO.	SYMBOL	CODE	Q'TY	DESCRIPTION	REMARKS
1	B48J223-2	UN0849001	1	SENSOR PCB ASSY (SP)	

MODEL PT-300/PT-300WHC/PT-1700 8V2-301-100



5 . MAIN PCB

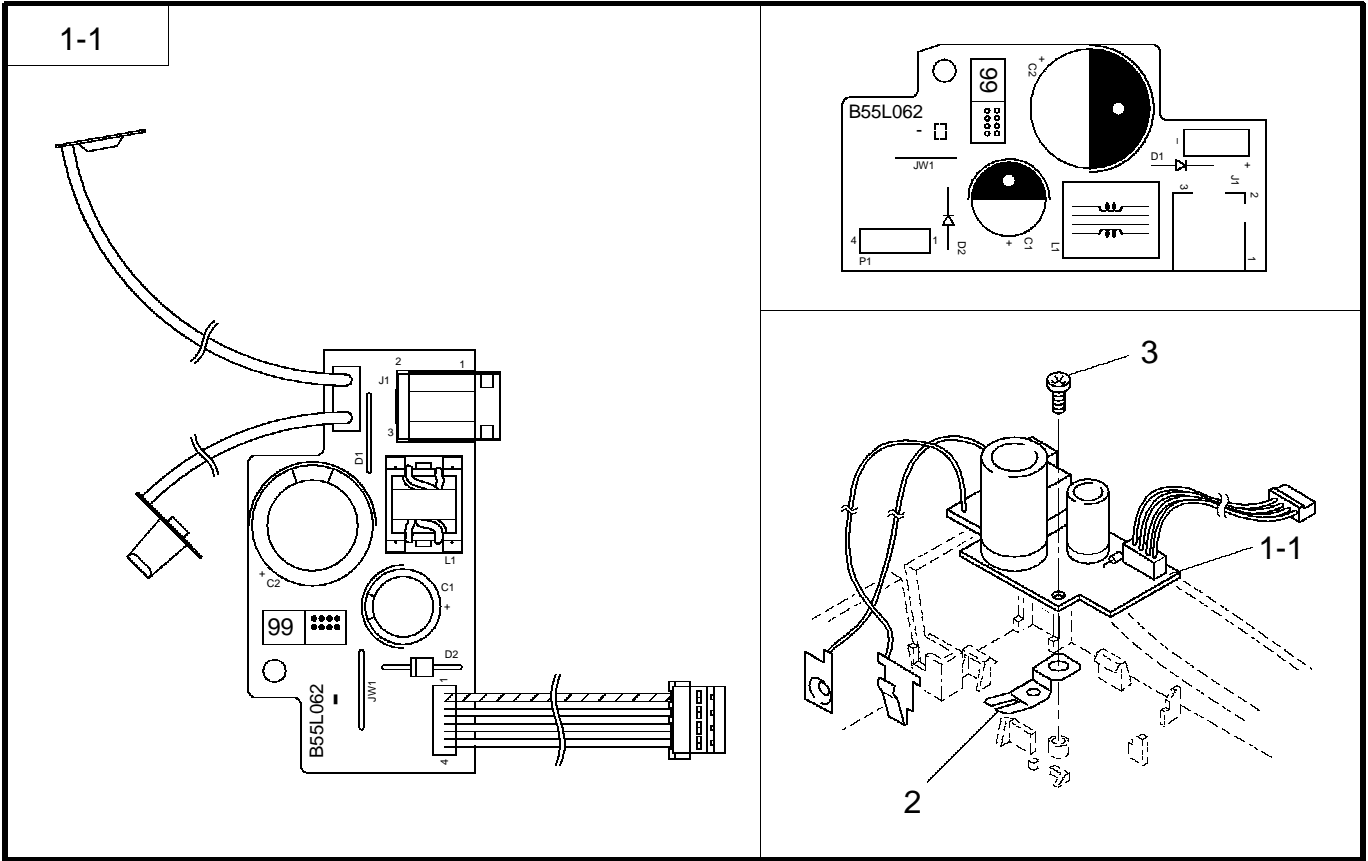
PT99031

REF.NO.	SYMBOL	CODE	Q'TY	DESCRIPTION	REMARKS
1-6	B48J233-1	UN0909001	1	MAIN PCB ASSY 300A (SP), PT300 US	
1-6	B55L059	LA0599001	1	MAIN PCB ASSY 1700 (SP), PT1700 US	ADD
1	Q5	UN0320000	1	LSI:S-81250PG-PD	
2	Q4	UN0307000	1	TRANSISTOR, :2SB1427	
3	P2	UN0315000	1	CONNECTOR:52806-1010	
4	P3	UN0314000	1	CONNECTOR:52207-0690	
5	P4	U16686000	1	CONNECTOR:B4B-PH	
6	P1	U17118001	1	CONNECTOR:B2B-PH	

MODEL PT-300/PT-300WHC/PT-1700 8V2-301-101

6 . POWER SUPPLY PCB

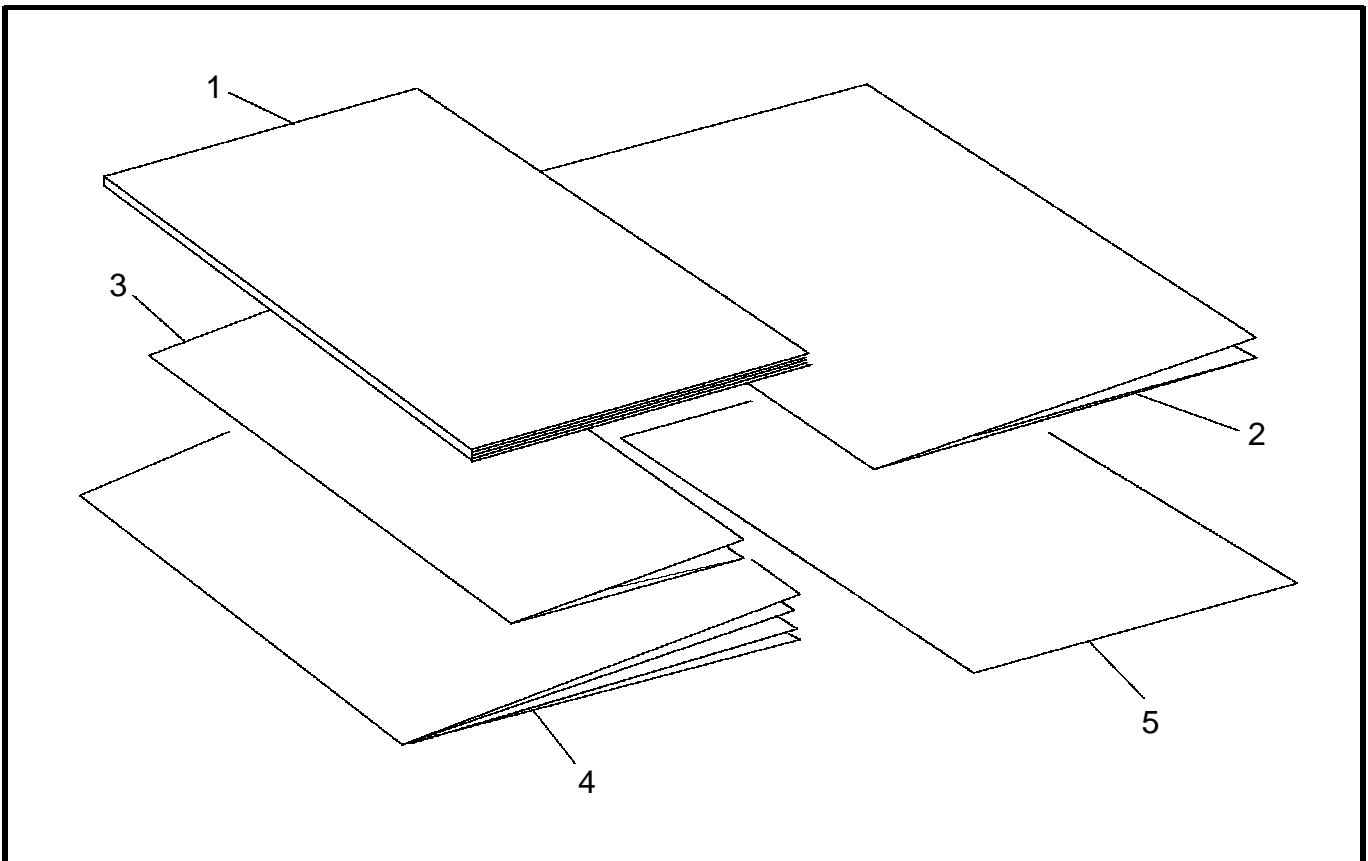
PT99032



MODEL PT-300/PT-300WHC/PT-1700 8V2-301-102

7 . PRINTED MATTER

PT97017



MODEL PT-300/PT-300WHC (USA) 8V2-301-920

6 . POWER SUPPLY PCB

PT99032

REF.NO.	SYMBOL	CODE	Q'TY	DESCRIPTION	REMARKS
1-1	B55L062	UN0843001	1	POWER SUPPLY PCB ASSY CHI (SP)	CHNG#A
1	J1	W00325001	1	JACK:HEC0470	CHNG#A
2		UN0341000	1	GROUND PLATE 300	
3		085270617	1	TAPTITE, BIND B M2.6X6	

MODEL PT-300/PT-300WHC/PT-1700 8V2-301-102

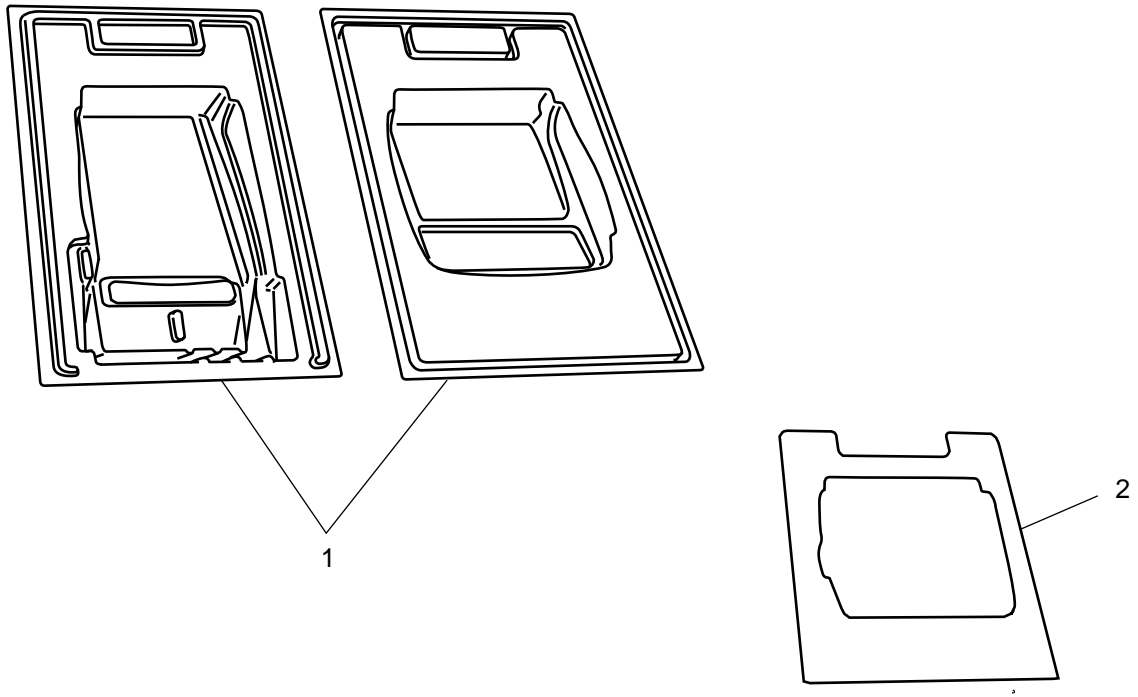
7 . PRINTED MATTER

PT99031

REF.NO.	SYMBOL	CODE	Q'TY	DESCRIPTION	REMARKS
1	A	UN0166001	1	USER'S MANUAL 300US, PT300 US	
1		LA0585001	1	USER'S MANUAL 1700US, PT1700 US	ADD
2		UN0182001	1	WARRANTY CARD US ENG, CHI	
3	C	UN0838001	1	TAPE CATALOG US, ENG CHN	
4		UN0167001	1	SERVICE CENTER LIST US, PT300	
5	A	UN0181001	1	APPLICATION CARD US, PT300	
5		LA0459001	1	APPLICATION CARD US, PT1700	ADD

MODEL PT-300/PT-300WHC/PT-1700 8V2-301-920

8 . PACKING MATERIALS



MODEL PT-300/PT-300WHC (USA) 8V2-301-930

8 . PACKING MATERIALS

PT99031

REF.NO.	CODE	Q'TY	DESCRIPTION	REMARKS
1	UN0169001	1	CLAM SHELL ASSY 300US	ADD
1	UN3942001	1	CLAM SHELL ASSY 300WHC	
1	UT0495001	1	CLAM SHELL ASSY 300CLB	
2	UN0176001	1	COMMERCIAL SHEET PT300US	
2	UN3475001	1	COMMERCIAL SHEET PT300WHC	
2	UN5354001	1	COMMERCIAL SHEET PT300CLB	
2	LA0443001	1	COMMERCIAL SHEET PT1700US	

MODEL PT-300 US/PT-300WHC/PT-300CLB/PT-1700 8V2-301-930

brother®

Feb., '96
8V2032BE0
Printed in Japan