

ORGANIZE. IDENTIFY. SIMPLIFY.

**P-touch**<sup>®</sup>

electronic

# LABELING SYSTEM

Perfect for  
the home office  
or the corner office

**INCLUDES:**

6 AA Batteries &  
Starter Tape

**NEW!**

## AUTO TAPE CUTTER

Allows you to set the machine to automatically cut each label after it's printed

## UP TO 4-LINE PRINTING

Perfect for addresses, instructions, "property of" labels, CD cases and more

## DURABLE LAMINATED TAPE

Abrasion, UV, Spill, Heat and Cold Resistant

MODEL  
PT-1900

At your side.<sup>™</sup>  
**brother**<sup>®</sup>

© 2002 Brother International Corporation



# electronic LABELING SYSTEM

Perfect for the home office or the corner office

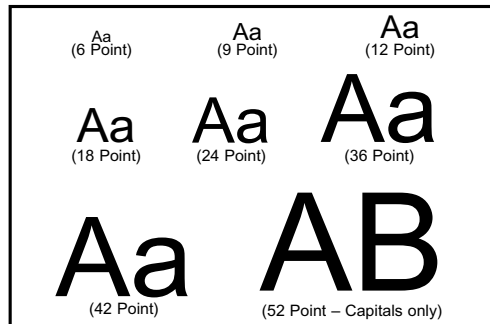
With its features and portability, the PT-1900 is all you need to immediately start organizing any work area. The PT-1900 comes with 6 AA Batteries and "TZ" Starter Tape.

## Quality Features

- Auto tape cutter
- 10 character x 2 line LCD Display with font viewer
- Prints 2 fonts, 8 type sizes, 8 type styles and Vertical
- Prints up to 4 lines of text
- Prints 53 symbols
- "TZ" tape available in 1/4", 3/8", 1/2" and 3/4" widths
- Prints up to 52 point type (appr.)
- Unit Dimensions: 7.1" (w) x 9.2" (d) x 2.1" (h)
- Unit Weight 1.8 lbs. (without batteries)
- UPC Code: 0 12502 60001 5

## Create the Perfect Label

### 8 TYPE SIZES



### 8 TYPE STYLES



## Scannable Bar Code



**INCLUDED:** "TZ" 1/2" (12mm) x 16' (5m) Black on White Starter Tape and 6 AA Batteries.



## THE Right TAPE for the Right Project

### LAMINATED TAPE

- Perfect for virtually all labeling needs
- Heat, cold and UV resistant
- Spill resistant

### INDUSTRIAL ADHESIVE TAPE

- Twice the adhesive strength of standard tape
- For textured and slippery surfaces
- For harsh environments: labs, manufacturing, outdoors



### PRINTS VARIOUS COLOR COMBINATIONS

LAMINATED	1/4" (6mm)	3/8" (9mm)	1/2" (12mm)	3/4" (18mm)
Black on White	✓	✓	✓	✓
Black on Yellow			✓	✓
White on Black	✓	✓	✓	✓
Black on Clear	✓	✓	✓	✓
Gold on Black			✓	✓
Black on Red		✓		✓
Red on White			✓	✓
Black on Fluorescent Orange				✓
Black on Clear Matte				✓
Black on Blue				✓
Blue on White				✓
Black on Green				✓
White on Blue				✓
White on Clear				✓

### INDUSTRIAL TAPES

Black on White	✓	✓	✓	✓
Black on Clear	✓	✓	✓	✓

### SPECIALTY TAPES

Blue on White Iron-on Fabric			✓	
Black on White Security Tape				✓

All tapes are 26.2' long (8m) except fluorescent tape (16.4' 5m), fabric tape (9.8' 3m), and the Starter Tape (16' 5m).

## Other Supplies:

(purchased separately)

- AC Adapter (model #AD60)
- Protective Carrying Case (model #6998)
- "TZ" Tapes (up to 3/4" wide)



For More Information visit our web site at <http://www.brother.com> or please call the Brother Fax-Back system at 1-800-521-2846 (USA), 1-800-681-9838 (Canada)



[www.brother.com](http://www.brother.com)

© 2002 Brother International Corporation  
100 Somerset Corporate Blvd. Bridgewater, NJ 08807  
Specifications subject to change without notice. Printed in the USA. CATPT1900