

ORGANIZE. IDENTIFY. SIMPLIFY.

P-touch®

ELECTRONIC LABELING SYSTEM

Perfect for
the home office
or the corner office

NEW!

AUTO TAPE CUTTER

Allows you to set the machine to automatically cut each label after it's printed

UP TO 4-LINE PRINTING

Perfect for addresses, instructions, "property of" labels, CD cases and more

DURABLE LAMINATED TAPE

Abrasion, UV, Spill, Heat and Cold Resistant

INCLUDES:

Protective Carrying Case, "TZ" Laminated Starter Tape & 6 AA batteries



MODEL
PT-1910

At your side.™

brother®



electronic LABELING SYSTEM

Perfect for the home office or the corner office

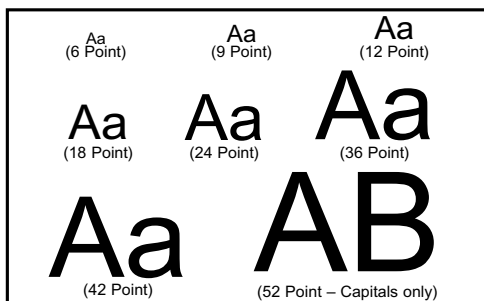
With its features and portability, the PT-1910 is all you need to immediately start organizing any work area. The PT-1910 comes with Protective Carrying Case, 6 AA Batteries, and "TZ" Starter Tape.

Quality Features

- Auto tape cutter
- 10 character x 2 line LCD Display with font viewer
- Prints 2 fonts, 8 type sizes, 8 type styles and Vertical
- Prints up to 4 lines of text
- Prints 53 symbols
- "TZ" tape available in 1/4", 3/8", 1/2" and 3/4" widths
- Prints up to 52 point type (appr.)
- Unit Dimensions: 7.1" (w) x 9.2" (d) x 2.1" (h)
- Unit Weight 1.8 lbs. (without batteries)
- UPC Code: 0 12502 60267 5

Create the Perfect Label

8 TYPE SIZES



8 TYPE STYLES



Scannable Bar Code



INCLUDES:

- Protective Carrying Case, "TZ" 1/2" (12mm) x 16' (5m) Black on White Starter Tape and 6 AA Batteries



THE Right TAPE for the Right Project

LAMINATED TAPE

- Perfect for virtually all labeling needs
- Heat, cold and UV resistant
- Spill resistant

INDUSTRIAL ADHESIVE TAPE

- Twice the adhesive strength of standard tape
- For textured and slippery surfaces
- For harsh environments: labs, manufacturing, outdoors



PRINTS VARIOUS COLOR COMBINATIONS

LAMINATED	1/4" (6mm)	3/8" (9mm)	1/2" (12mm)	3/4" (18mm)
Black on White	✓	✓	✓	✓
Black on Yellow			✓	✓
White on Black	✓	✓	✓	✓
Black on Clear	✓	✓	✓	✓
Gold on Black			✓	✓
Black on Red		✓		✓
Red on White			✓	✓
Black on Fluorescent Orange				✓
Black on Clear Matte				✓
Black on Blue				✓
Blue on White				✓
Black on Green				✓
White on Blue				✓
White on Clear				✓

INDUSTRIAL TAPES

Black on White	✓	✓	✓	✓
Black on Clear	✓	✓	✓	✓

SPECIALTY TAPES

Blue on White Iron-on Fabric			✓	
Black on White Security Tape				✓

All tapes are 26.2' long (8m) except fluorescent tape (16.4' / 5m), fabric tape (9.8' / 3m), and the Starter Tape (16' / 5m).

Other Supplies:

(purchased separately)

- AC Adapter (model #AD60)
- "TZ" Tapes (up to 3/4" wide)



For More Information visit our web site at <http://www.brother.com> or please call the Brother Fax-Back system at 1-800-521-2846 (USA), 1-800-681-9838 (Canada)



www.brother.com

© 2002 Brother International Corporation
100 Somerset Corporate Blvd. Bridgewater, NJ 08807

Specifications subject to change without notice. Printed in the USA. CATPT1910