



## **PARTS REFERENCE LIST**

**MODEL: PT-20/PT-25**

**PT-5000**

**BL-5000**

**MECHANICS & ELECTRONICS**

**REVISED EDITION 200**



## NOTES FOR USING THIS PARTS REFERENCE LIST

1. In the case of ordering parts, it needs mentioning the following items:

- (1) Code
- (2) Q'ty
- (3) Description
- (4) Revision No.(for a kind of printed circuit boards)

**Note: No orders without Parts Code or Tool No. can be accepted.**

### Example

REF.NO.	CODE	Q'TY	DESCRIPTION	REMARKS

**(4) Revision No.:** marked on a printed circuit board

**B48V032 - 3 01 A**

----- Design change indication  
----- Specification No.  
----- Pattern alteration No.  
----- Circuit board No.

**2. On alternative parts (design changed parts);**

They have any one of the following symbols. In such a case, please refer to information, "Technical Information (revised edition)", and order.

- #A : exchangeable  
#B : substitutable new one for old  
#D : unexchangeable  
# : newly-established

3. The original of this list was made based on the information available in March 1993.

**4. Parts are subject to change in design without previous notice.**

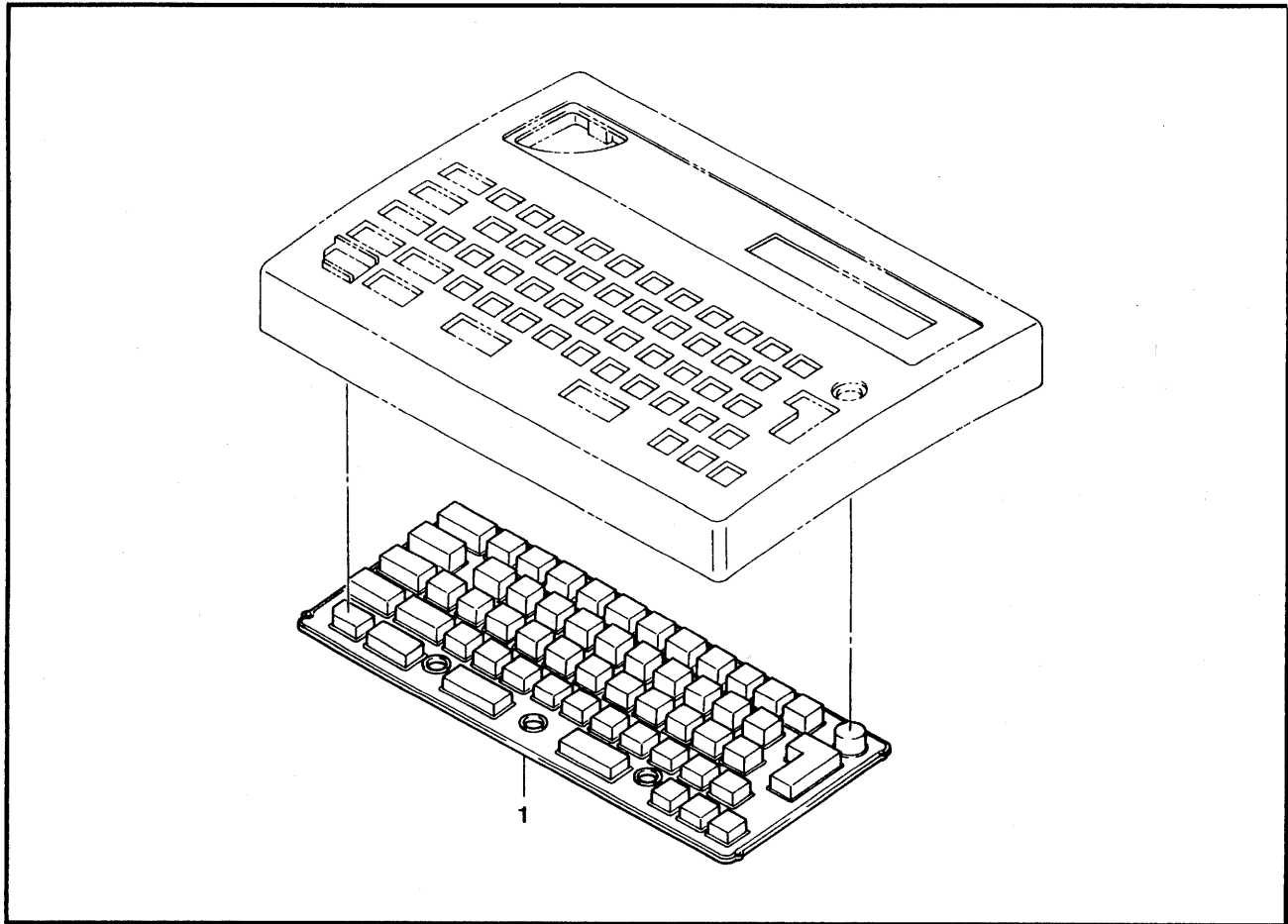


# CONTENTS

1. RUBBER KEY .....	1
2. PRINTED MATTER .....	1
3. MECHANISM .....	3
4. COVER .....	5
5. MAIN PCB ASSEMBLY .....	7
6. POWER SUPPLY PCB ASSEMBLY .....	11
7. ACCESSORIES .....	11
8. PACKING MATERIALS .....	13
9. ADJUSTING TOOL KIT .....	15
INDEX .....	17

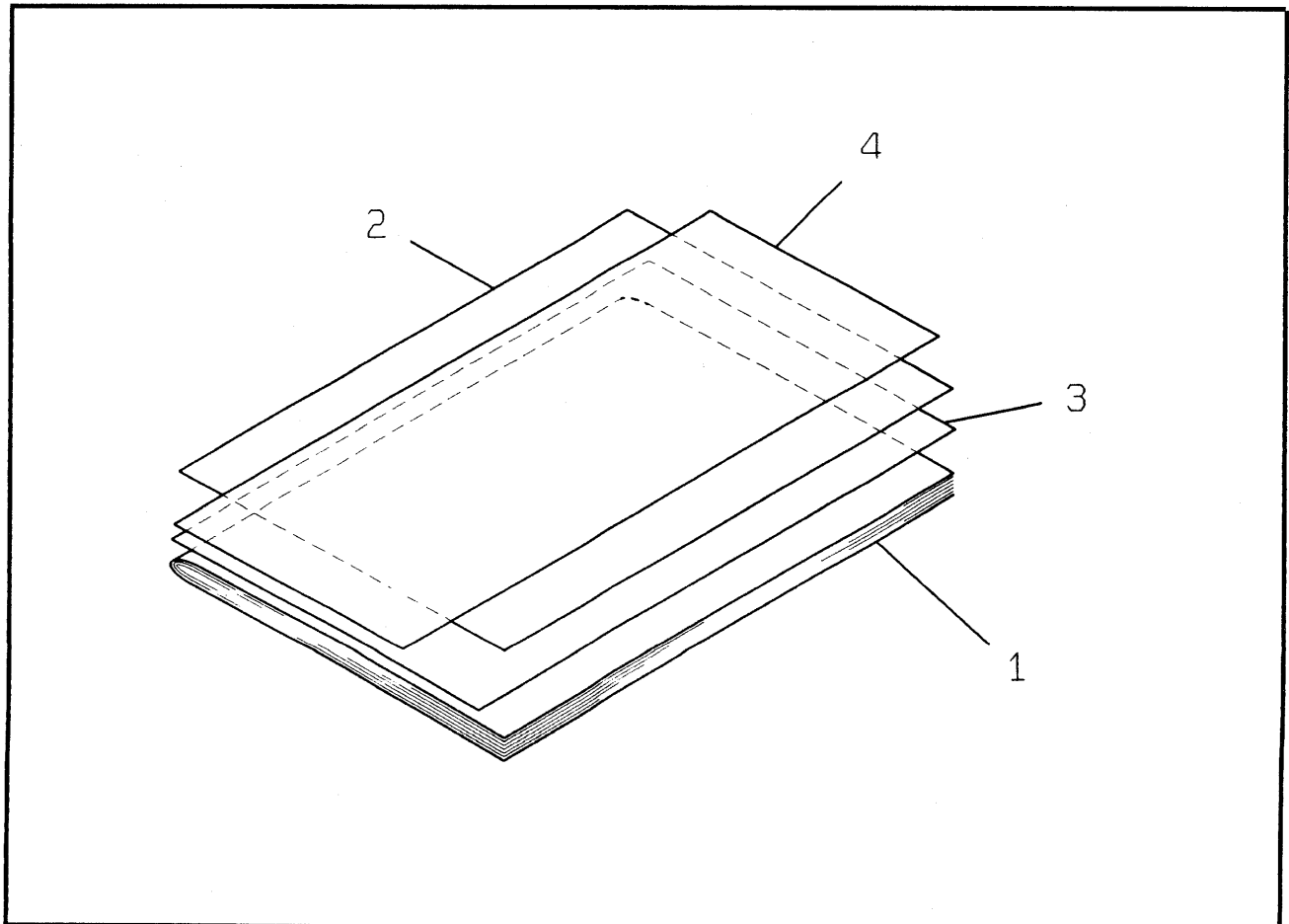
1. RUBBER KEY

0200



5V1-401-003

2. PRINTED MATTER



5V1-401-920

# 1. RUBBER KEY

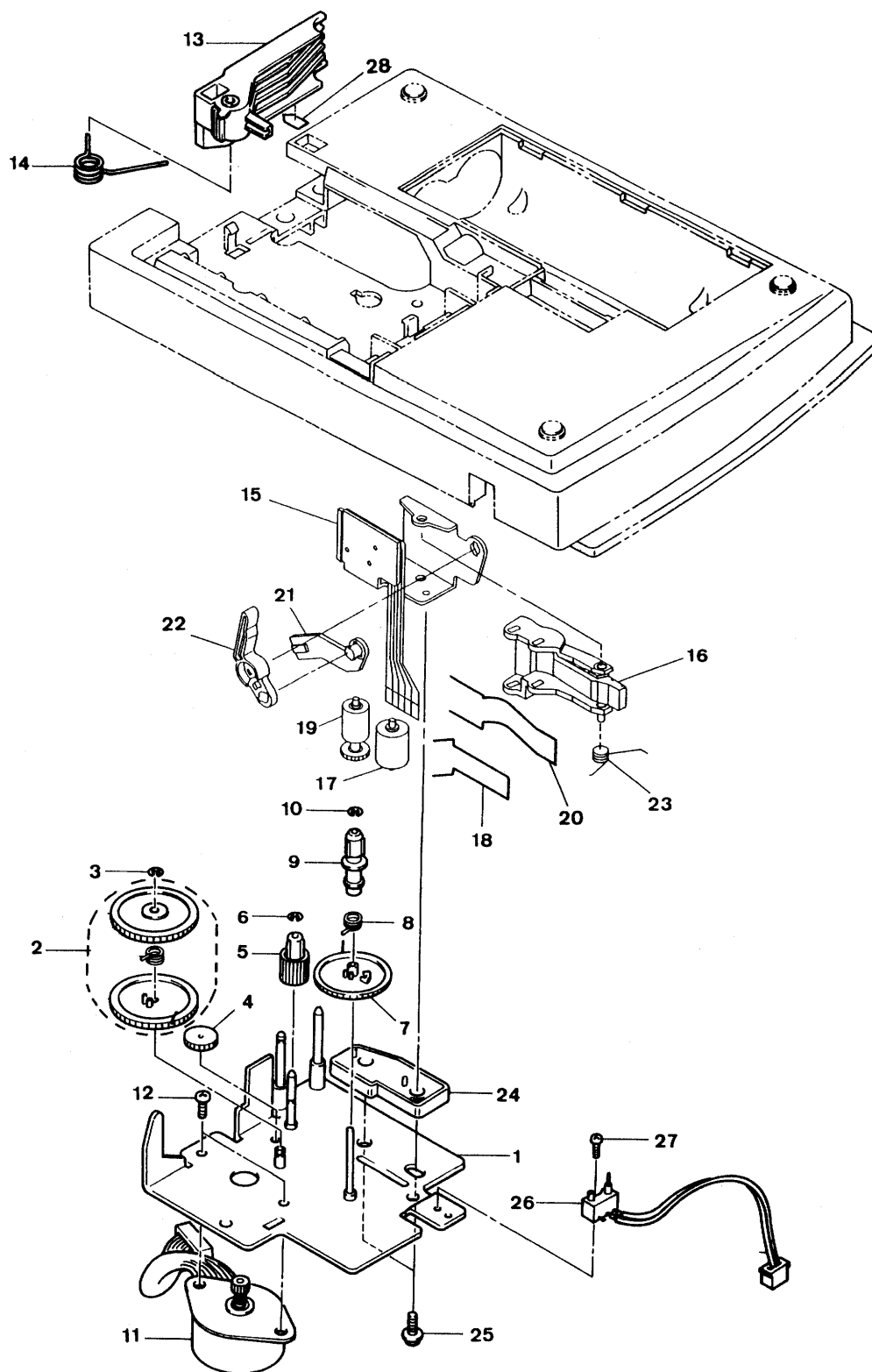
REF.NO.	CODE	Q'TY	DESCRIPTION	REMARKS
1	UB2801001	1	RUBBER 56 KEY 20, GRAY1252 PT-20 USA.CAN.	
1	UB2801002	1	RUBBER 56 KEY 20, GRAY1251 PT-25 USA.	
1	UB2802001	1	RUBBER 56 KEY UK, GRAY1252 PT-5000 OTHERS	
1	UB2803001	1	RUBBER 56 KEY FR, GRAY1252 PT-5000 FRA.	
1	UB2804001	1	RUBBER 56 KEY D, GRAY1252 PT-5000 DEU.	
1	UB2805001	1	RUBBER 56 KEY BG, GRAY1252 PT-5000 BEL.	
1	UB3551001	1	RUBBER 56 KEY EAST, GRAY1252 PT-5000EASTERN EUROPE	#
1	UB3664001	1	RUBBER 56 KEY LEGUK, GRAY1252 LEGRAND GBR.	#
1	UB3665001	1	RUBBER 56 KEY ASSY, GRAY1252 LEGRAND FRA.	#
1	UB3666001	1	RUBBER 56 KEY LEG, GRAY1252 LEGRAND DEU.	#
1	UB4108001	1	RUBBER 56 KEY KOREAN, GRAY1252 BL-5000 KOR.	#

5V1-401-003

# 2. PRINTED MATTER

REF.NO.	CODE	Q'TY	DESCRIPTION	REMARKS
1	UB2840001	1	USER'S MANUAL, USA PT20/25	
1	UB2842001	1	USER'S MANUAL, ENGLISH PT-5000 GBR.ENG	
1	UB2843001	1	USER'S MANUAL, GERMAN PT-5000	
1	UB2844001	1	USER'S MANUAL, BEL.F/D PT-5000 CHE.BEL.	
1	UB2845001	1	USER'S MANUAL, FRENCH PT-5000	
1	UB2846001	1	USER'S MANUAL, DUTCH PT-5000	
1	UB2847001	1	USER'S MANUAL, SWEDISH PT-5000	
1	UB2848001	1	USER'S MANUAL, FINNISH PT-5000	
1	UB2849001	1	USER'S MANUAL, CHE.G/F PT-5000	
1	UB2850001	1	USER'S MANUAL, DANISH PT-5000	
1	UB3475001	1	USER'S MANUAL, NORWEGIAN PT-5000	#
1	UB3548001	1	USER'S MANUAL, ITALIAN PT-5000	#
1	UB3576001	1	USER'S MANUAL, CAN.ENGLISH PT-20	#
1	UB3577001	1	USER'S MANUAL, CAN.FRENCH PT-20	#
1	UB3949001	1	USER'S MANUAL, SPANISH PT-5000	#
1	UB4114001	1	USER'S MANUAL, KOREAN BL-5000	#
2	UB3098001	1	WARRANTY CARD, ENGLISH PT-20/25 USA.	
2	UB0659001	1	WARRANTY CARD, GERMAN PT-5000	
2	237703001	1	WARRANTY CARD, DUTCH PT-5000	
2	UB2565001	1	WARRANTY CARD, SWEDISH PT-5000	
2	UB0792001	1	WARRANTY CARD, CAN.ENGLISH PT-20	#
2	UB0793001	1	WARRANTY CARD, CAN.FRENCH PT-20	#
2	UB3650001	1	WARRANTY CARD, FRENCH PT-5000	#
2	UB4115001	1	WARRANTY CARD, KOREAN BL-5000	#
3	UB2863001	1	INSTRUCTION SHEET, SPANISH	
4	UB2851001	1	TAPE ATTENTION SHEET, USA	

5V1-401-920

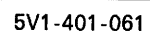




### 3. MECHANISM

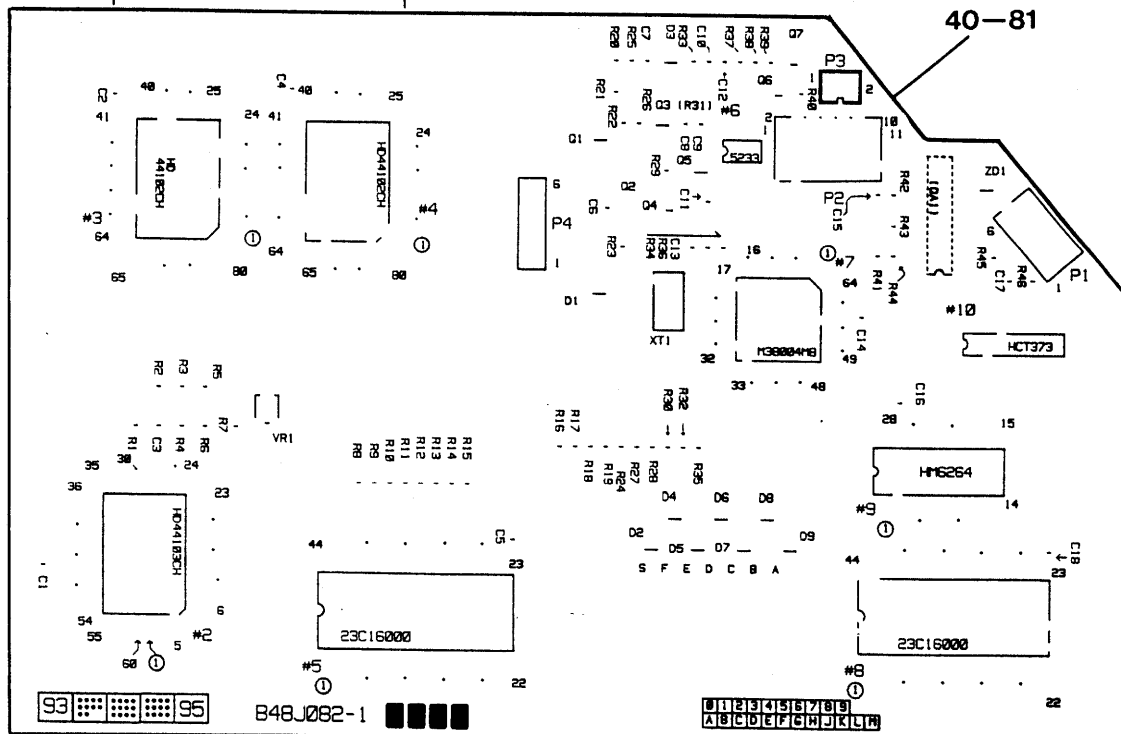
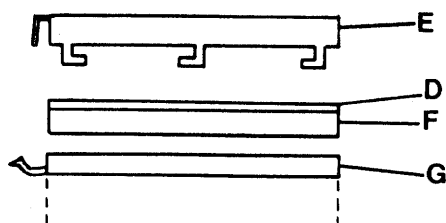
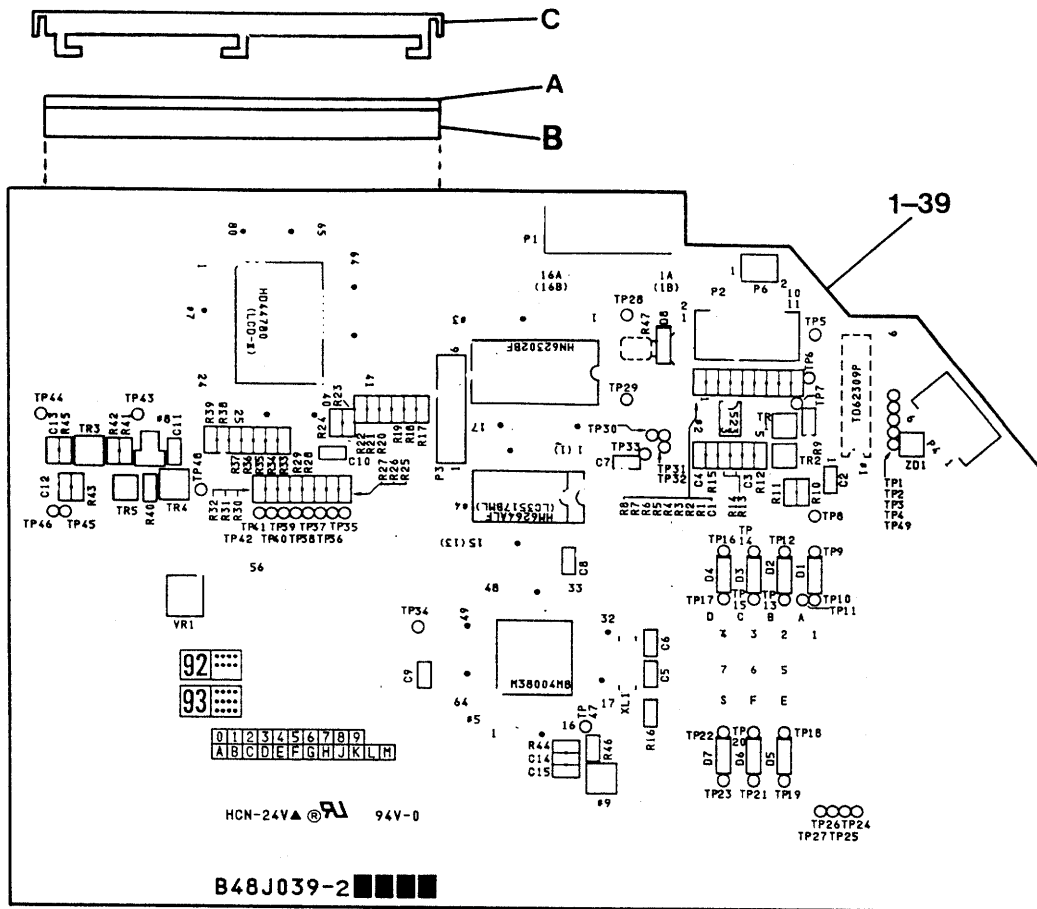
REF.NO.	CODE	Q'TY	DESCRIPTION	REMARKS
1-10	UB2822001	1	MOTOR HOLDER ASSY L	#DB
1	UB2823001	1	MOTOR HOLDER SUB ASSY L	
2	UB4145001	1	CLUTCH SPRING ASSY	
3	048020346	1	RETAINING RING, E2	
4	UB2832000	1	IDLE GEAR L	#B
5	UB2833001	1	TAPE FEED ROLLER CAM L	
6	048020346	1	RETAINING RING, E2	
7	UB0036000	1	RIBBON DRIVE GEAR	
8	UB4082001	1	CLUTCH SPRING	#B
9	UB2834001	1	RIBBON DRIVE CAM L	
10	048015346	1	RETAINING RING, E 1.5	
11	Z25716001	1	TAPE FEED MOTOR	
12	062260406	2	SCREW, PAN M2.6X4	#B
13	UB2819025	1	CUTTER LEVER 20, VIOLET6140	
14	UB1806000	1	SPRING	
15	UB0053001	1	HEAD ASSY	
16-20	UB3983001	1	ROLLER HOLDER ASSY N	#B
16	UB0046001	1	ROLLER HOLDER	
17	UB0047001	1	PLATEN ROLLER	
18	UB0049001	1	PLATEN SPRING	
19	UB0050001	1	TAPE FEED SUB ROLLER	#B
20	UB3984001	1	SUB ROLLER SPRING N	
21	UB0130001	1	ROLLER RELEASE ROD	
22	UB0061003	1	ROLLER RELEASE LEVER	
23	UB0131001	1	SPRING TORSION	#A
24	UB2837001	1	HEAD SPACER	
25	135525001	2	SCREW, PAN (WASHER) M3X10	
26	UB2859001	1	SENSOR SWITCH ASSY	
27	UB2860001	1	SCREW, PAN M17X4	#A
28	UB3011001	1	CUTTER LABEL 20	

5V1-401-045



# 4. COVER

REF.NO.	CODE	Q'TY	DESCRIPTION	REMARKS
1	UB2806005	1	BODY COVER 20, GRAY738 PT-20 USA.CAN.	
1	UB2807024	1	BODY COVER 25, GRAY1267 PT-25 USA.	
1	UB2808005	1	BODY COVER 5000 UK, GRAY738 PT-5000 OTHERS	
1	UB2809005	1	BODY COVER 5000 FR, GRAY738 PT-5000 FRA.	
1	UB2810005	1	BODY COVER 5000 D, GRAY738 PT-5000 DEU.AUT.	
1	UB3671005	1	BODY COVER LEG, GRAY738 LEGRAND GBR.	#
1	UB3672005	1	BODY COVER LEG, GRAY738 LEGRAND FRA.	#
1	UB3673005	1	BODY COVER LEG, GRAY738 LEGRAND DEU.	#
1	UB4109005	1	BODY COVER 5000, GRAY738 BL-5000 KOR.	#
2	UB2812005	1	ROM PACK LID 20, GRAY738 OTHERS	
2	UB2812024	1	ROM PACK LID 20, GRAY1267 PT-25 USA.	
3	UB0132001	1	LID REPLACING SPRING	
4	UB2813001	1	LCD PANEL 20 PT-20 USA.CAN.	
4	UB2814001	1	LCD PANEL 25 PT-25 USA.	
4	UB2815001	1	LCD PANEL 5000 PT-5000 OTHERS	
4	UB2869001	1	LCD PANEL 5000F PT-5000 FRA.	
4	UB2870001	1	LCD PANEL 5000D PT-5000 DEU.AUT.	
4	UB3674001	1	LCD PANEL LEG LEGRAND GBR.	#
4	UB3675001	1	LCD PANEL LEG LEGRAND FRA.	#
4	UB3676001	1	LCD PANEL LEG LEGRAND DEU.	#
4	UB4110001	1	LCD PANEL 5000H BL-5000 KOR.	#
5	UB2235001	2	TAPTITE, PAN B M2.6X6	#B
6	UB2816005	1	BOTTOM COVER 20, GRAY738 OTHERS	
6	UB2816024	1	BOTTOM COVER 20, GRAY1267 PT-25 USA.	
7	UB0070000	1	BATTERY TERMINAL	
8	575364001	3	TAPTITE, PAN P M3X8	
9	085311615	1	TAPTITE, BIND B M3X16	#B
10	UB2817005	1	BATTERY CAP 20, GRAY738 OTHERS	
10	UB2817024	1	BATTERY CAP 20, GRAY1267 PT-25 USA.	
11	UB2818005	1	CASSETTE COVER 20, GRAY738 OTHERS	
11	UB2818024	1	CASSETTE COVER 20, GRAY1267 PT-25 USA.	
12	UB0122001	3	FELT FOOT	
13	UB2838000	1	BLIND SHEET 20	
14	UB2864001	1	RATING LABEL, PT-20 USA.CAN.	
14	UB2865001	1	RATING LABEL, PT-25 USA.	
14	UB2866001	1	RATING LABEL, PT-5000 OTHERS	
14	UB2867001	1	RATING LABEL, FTZ PT-5000 DEU.	
14	UB3677001	1	RATING LABEL LEGRAND FRA.DEU.	#
14	UB3939001	1	RATING LABEL LEGRAND GBR.	#
14	UB4111001	1	RATING LABEL BL-5000 KOR.	#
15A	UB2861001	1	CAUTION LABEL 20 PT-20/25 USA.	
15B	UB1522001	1	CAUTION LABEL 2 PT-20 CAN./PT-5000	
15A	UB4112001	1	CAUTION LABEL, KOREAN BL-5000 KOR.	#
16	UB0544001	1	ATTENTION LABEL 8E PT-5000 OTHERS	
16	UB1873001	1	ATTENTION LABEL, NORTH EUROPE PT-5000 DNK.SWE.FIN.	
16	UB4113001	1	ATTENTION LABEL, KOREAN BL-5000 KOR.	#
17	UB2862001	1	MYLAR LABEL 20 PT-20 USA.	
17	UB2868001	1	MYLAR LABEL 25 PT-25 USA.	
18	575364001	1	TAPTITE, PAN P M3X8	#



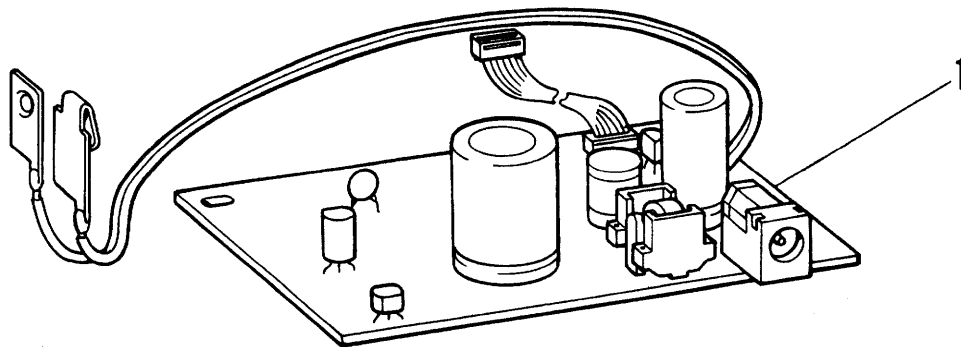
# 5. MAIN PCB ASSEMBLY

REF.NO.	SYMBOL	CODE	Q'TY	DESCRIPTION	RMKS
1-39	B48J039-206D	UB2937001	1	MAIN PCB ASSY PT20/25, USA(SP)	#B
1-39	B48J039-201D	UB2931001	1	MAIN PCB ASSY 5000, INT. (SP) EUROPE OTHERS	
1-39	B48J039-202D	UB2932001	1	MAIN PCB ASSY 5000, GERMAN(SP) DEU.	
1-39	B48J039-203D	UB2933001	1	MAIN PCB ASSY 5000, FRENCH(SP) FRA.	
1-39	B48J039-204D	UB2935001	1	MAIN PCB ASSY 5000,BELGIUM(SP) BEL.	
1-39	B48J039-200	UB3635001	1	MAIN PCB ASSY 5000, EAST (SP) AUT.	#
1-39	B48J039-201	UB3655001	1	MAIN PCB ASSY LU (SP) LEGRAND GBR.	#
1-39	B48J039-202	UB3656001	1	MAIN PCB ASSY LG, GERMAN (SP) LEGRAND DEU.	#
1-39	B48J039-203	UB3657001	1	MAIN PCB ASSY LF, FRENCH (SP) LEGRAND FRA.	#
1	A	UB2702000	1	LCD:LR728-C	
2	B	UB2904001	2	RUBBER CONNECTOR	
3	C	UB2905000	1	LCD HOLDER	
4	#5	UB2907000	1	MCU:M38004M8 PT-20/25	
4	#5	UB2916000	1	MCU:M38004M8-FP EUROPE OTHERS	
4	#5	UB3556000	1	MCU:M38004M8 AUT.	#
4	#5	UB3654000	1	MCU:M38004M8-105 LEGRAND	#
5	#3	UB2908000	1	MASK ROM:23C1001EA314 PT-20/25	
5	#3	UB2917000	1	MASK ROM:HN62302BF EUROPE OTHERS/LEGRAND	
5	#3	UB3557000	1	MASK ROM:HN62302B AUT.	#
6	#4	X56243001	1	SRAM:LC3517BML-15 PT-20/25	
6	#4	UB2082000	1	SRAM:HM6264ALFP15 EUROPE OTHERS/LEGRAND	
7	#7	UB2610000	1	LSI:HD44780SB94 PT-20/25	
7	#7	UB1476000	1	LSI:HD44780SB49 EUROPE OTHERS/LEGRAND GBR.	
7	#7	UB1478000	1	LSI:HD44780SB51 DEU./LEGRAND DEU.	
7	#7	UB1477000	1	LSI:HD44780SB50 BEL.FRA./LEGRAND FRA.	
7	#7	UB3555000	1	LSI:HD44780SC07 AUT.	#
8	#8	UB2617000	1	IC:S-8052ALO	
9	#2	UB2940000	1	COMPARATOR:M5233FP	
10	#9	UB1854000	1	LSI:MN13821R	
11	#1	UB0142000	1	TRANSISTOR AR:TD62309P	
12	TR4	U33546000	1	TRANSISTOR, :2SA1365	
13	TR3	UC2512000	1	TRANSISTOR, :2SC1623	
14	TR2	UB2085000	1	TRANSISTOR, :DTA115GU	
15	TR1,TR5	UB2087000	2	TRANSISTOR, :DTC144EU	
16	D1-D8	UB2088000	8	DIODE, :RLS73	
17	ZD1	U40275000	1	DIODE, ZENER:02CZ12X	
18	XL1	UB2618000	1	CERAMIC OSCILLATOR:CSAC5MGC	
19	C4	Y81533010	1	CAPACITOR, CERAMIC 50C103J	
20	C1,7-11,13,14,15	Y81042400	9	CAPACITOR, CERAMIC 25C104	
21	C12	Y81031010	1	CAPACITOR, CERAMIC 50C103	
22	C2	Y81021010	1	CAPACITOR, CERAMIC 50C102	
23	C3	UB0082000	1	CAPACITOR, CERAMIC 16C683K	
24	C5,C6	Y73002110	2	CAPACITOR, CERAMIC 50C300CH	
25	R3,R4	094564110	2	FIXED RESISTOR, G-C110G564	#B
26	R15,R6	094273110	2	FIXED RESISTOR, G-C110G273	#B
27	R14,R5	094223110	2	FIXED RESISTOR, G-C110G223	#B
28	R7,R41,R42,R45	094105120	4	FIXED RESISTOR, G-C110J105	
29	R2,8,10,11,16-32,43	094104120	22	FIXED RESISTOR, G-C110J104	
30	R39	094913120	1	FIXED RESISTOR, G-C110J913	
31	R12	094273120	1	FIXED RESISTOR, G-C110J273	
32	R1,9,13,40,44,46	094103120	6	FIXED RESISTOR, G-C110J103	#B
33	VR1	UB2948000	1	VARIABLE RESISTOR, G-4H01-502	#B
34	R47	U42459000	1	THERMISTOR:BRK103A	
35	P2	UB0147000	1	CONNECTOR:52044-1110	
36	P4	U17120000	1	CONNECTOR:S6B-PH	
37	P6	U17118000	1	CONNECTOR:B2B-PH	
38	P3	UB2369000	1	CONNECTOR:HBRN6S-1	
39	R34,35,37,38	094222120	4	FIXED RESISTOR, G-C110J222	#B
40-81	B48J082-1	UB4164001	1	MAIN PCB ASSY, KOREAN (SP) BL-5000	#
40	D	UB2347000	1	LCD:LR725-C	#
41	E	UB2365000	1	LCD HOLDER 66	#
42	F	UB2366000	2	RUBBER CONNECTOR 66	#
43	G	UB2367005	1	LCD SPACER 66, GRAY738	#
44	#7	UB4120000	1	MCU:M38004M8	#
45	#8	UB4121000	1	MASK ROM:HN624116FB1	#
46	#5	UB4122000	1	MASK ROM:HN624116FB2	#
47	#9	UB2082000	1	SRAM:HM6264ALFP15	#
48	#3,4	U16009000	2	LSI:HD44102CH	#
49	#2	UB0278000	1	LSI:HD44103CH	#
50	#10	093850373	1	IC:74HCT373F	#
51	Q2	UB2617000	1	IC:S-8052ALO	#
52	#6	UB2940000	1	COMPARATOR:M5233FP	#
53	Q5	UB1854000	1	LSI:MN13821R	#
54	QA1	UB0142000	1	TRANSISTOR AR:TD62309P	#
55	Q1	U33546000	1	TRANSISTOR, :2SA1365	#

## 5. MAIN PCB ASSEMBLY

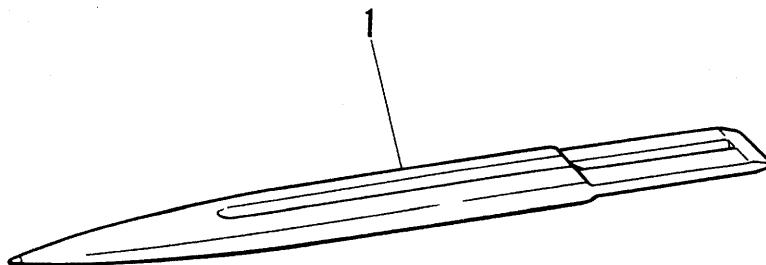
REF.NO.	SYMBOL	CODE	Q'TY	DESCRIPTION	RMKS
56	Q3	UC2512000	1	TRANSISTOR, :2SC1623	#
57	Q7	UB2085000	1	TRANSISTOR, :DTA115GU	#
58	Q4,6	UB2087000	2	TRANSISTOR, :DTC144EU	#
59	D1-9	U40273000	9	DIODE, :1SS187	#
60	ZD1	U40275000	1	DIODE, ZENER:02CZ12X	#
61	XT1	UB3822000	1	VIBRATOR:FAR-C4CB-05000-M00	#
62	C7	Y81533010	1	CAPACITOR, CERAMIC 50C103J	#
63	C1,2,4,5,6, 8,9,11,12, 14,16,17,18	Y81042400	13	CAPACITOR, CERAMIC 25C104	#
64	C13	Y81031010	1	CAPACITOR, CERAMIC 50C103	#
65	C15	Y81021010	1	CAPACITOR, CERAMIC 50C102	#
66	C10	UB0082000	1	CAPACITOR, CERAMIC 16C683K	#
67	C3	Y71004000	1	CAPACITOR, CERAMIC 50C100	#
68	R45,46	094564110	2	FIXED RESISTOR, G-C110G564	#
69	R25,44	094273110	2	FIXED RESISTOR, G-C110G273	#
70	R20,42	094223110	2	FIXED RESISTOR, G-C110G223	#
71	R22,23,26, 43	094105120	4	FIXED RESISTOR, G-C110J105	#
72	R8-19,24,27, 28,30,32,35, 36,37,41	094104120	21	FIXED RESISTOR, G-C110J104	#
73	R1	094683120	1	FIXED RESISTOR, G-C110J683	#
74	R39	094273120	1	FIXED RESISOTR, G-C110J273	#
75	R2-6,21,29, 33,34,38,40	094103120	11	FIXED RESISTOR, G-C110J103	#
76	VR1	UB2619000	1	VARIABLE RESISTOR, G-1RLB203	#
77	R31	U42459000	1	THERMISTOR:BRK103A	#
78	P2	UB0147000	1	CONNECTOR:52044-1110	#
79	P1	U17120000	1	CONNECTOR:S6B-PH	#
80	P3	U17118000	2	CONNECTOR:B2B-PH	#
81	P4	UB2369000	1	CONNECTOR:HBRN6S-1	#





5V1-401-102

7. ACCESSORIES



5V1-401-910



**6. POWER SUPPLY PCB ASSEMBLY**

REF.NO.	CODE	Q'TY	DESCRIPTION	REMARKS
1	UB2938001	1	PS PCB ASSY 20 (SP)	

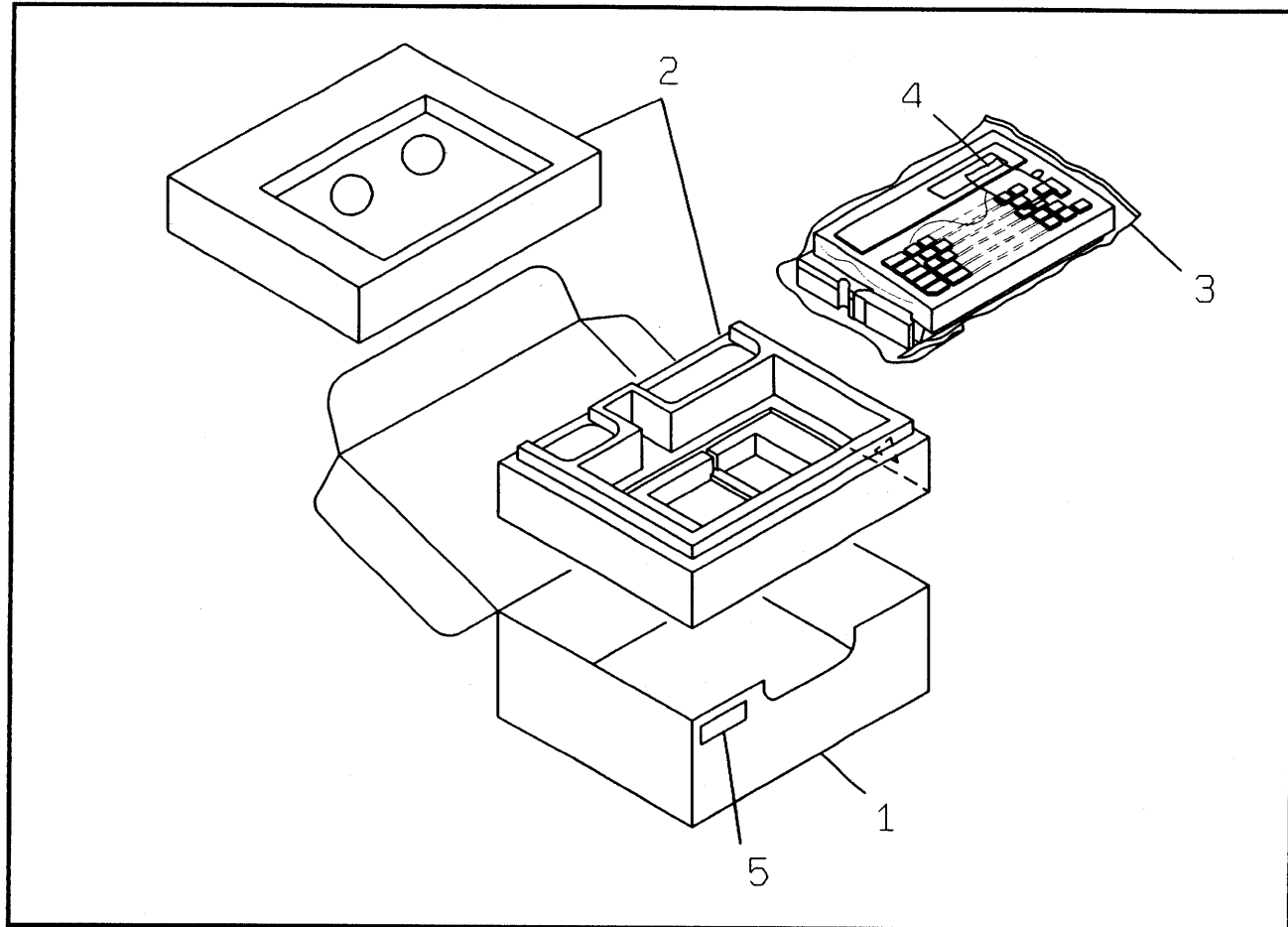
5V1-401-102

**7. ACCESSORIES**

REF.NO.	CODE	Q'TY	DESCRIPTION	REMARKS
1	UB2376005	1	LETTERING STICK, GRAY738	

5V1-401-910

## 8. PACKING MATERIALS



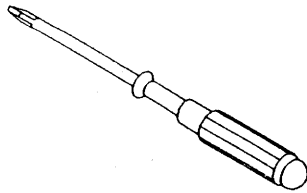
5V1-401-930

# 8. PACKING MATERIALS

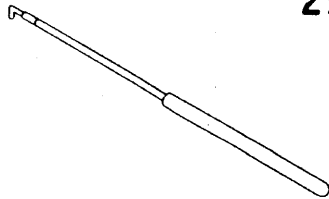
REF.NO.	CODE	Q'TY	DESCRIPTION	REMARKS
1	UB2854001	1	CARTON EUROPE OTHERS	
1	UB3013001	1	CARTON DEU.	
1	UB3578001	1	CARTON CAN.	#
1	UB3678001	1	CARTON LEGRAND	#
1	UB4116001	1	CARTON KOR.	#
2	UB2855001	1	STYROFOAM PAD ASSY	
3	U62093001	1	BAG OTHERS	
3	562778000	1	BAG GBR.	
3	UB3523001	1	BAG DEU.	#
4	163528001	1	LABEL,CAUTION GBR.	
5	UB2892001	1	BAR CODE LABEL, 113616/1 DEU.	#
5	UB2890001	1	BAR CODE LABEL, 113617/1 GBR.	#
5	UB2891001	1	BAR CODE LABEL, 113618/1 FRA.	#
5	UB2894001	1	BAR CODE LABEL, 113619/1 IRL.	#
5	UB2895001	1	BAR CODE LABEL, 113620/1 NLD.	#
5	UB2896001	1	BAR CODE LABEL, 113621/1 CHE.	#
5	UB2897001	1	BAR CODE LABEL, 113622/1 DNK.	#
5	UB2898001	1	BAR CODE LABEL, 113623/1 SWE.	#
5	UB2899001	1	BAR CODE LABEL, 113624/1 AUT.	#
5	UB2900001	1	BAR CODE LABEL, 113626/1 ITA.	#
5	UB2893001	1	BAR CODE LABEL, 113627/1 BEL.	#
5	UB2990001	1	BAR CODE LABEL, 113628/1 FIN.	#
5	UB2991001	1	BAR CODE LABEL, 113629/1 ESP.	#
5	UB3473001	1	BAR CODE LABEL, 113691/1 NOR.	#
5	UB3636001	1	BAR CODE LABEL, 113989/1 AUT.	#
5	UB4170001	1	BAR CODE LABEL, 115051/1 AUS.	#

5V1-401-930

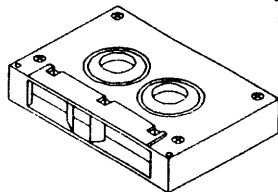
13



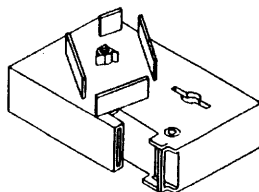
29



119



120



## 0200

[illegible]

## INDEX

CODE	REF.NO.	PAGE
UB0036000	3 - 7	4
UB0046001	3 - 16	4
UB0047001	3 - 17	4
UB0049001	3 - 18	4
UB0050001	3 - 19	4
UB0053001	3 - 15	4
UB0061003	3 - 22	4
UB0070000	4 - 7	6
UB0082000	5 - 23	8
	5 - 66	9
UB0122001	4 - 12	6
UB0130001	3 - 21	4
UB0131001	3 - 23	4
UB0132001	4 - 3	6
UB0142000	5 - 11	8
	5 - 54	8
UB0147000	5 - 35	8
	5 - 78	9
UB0278000	5 - 49	8
UB0544001	4 - 16	6
UB0659001	2 - 2	2
UB0792001	2 - 2	2
UB0793001	2 - 2	2
UB1476000	5 - 7	8
UB1477000	5 - 7	8
UB1478000	5 - 7	8
UB1522001	4 - 15B	6
UB1806000	3 - 14	4
UB1854000	5 - 10	8
	5 - 53	8
UB1873001	4 - 16	6
UB2082000	5 - 6	8
	5 - 47	8
UB2085000	5 - 14	8
	5 - 57	9
UB2087000	5 - 15	8
	5 - 58	9
UB2088000	5 - 16	8
UB2347000	5 - 40	8
UB2365000	5 - 41	8
UB2366000	5 - 42	8
UB2367005	5 - 43	8
UB2369000	5 - 38	8
	5 - 81	9
UB2376005	7 - 1	12
UB2565001	2 - 2	2
UB2610000	5 - 7	8
UB2617000	5 - 8	8
	5 - 51	8
UB2618000	5 - 18	8
UB2619000	5 - 76	9
UB2702000	5 - 1	8
UB2801001	1 - 1	2
UB2801002	1 - 1	2
UB2802001	1 - 1	2
UB2803001	1 - 1	2
UB2804001	1 - 1	2
UB2805001	1 - 1	2
UB2806005	4 - 1	6
UB2807024	4 - 1	6
UB2808005	4 - 1	6
UB2809005	4 - 1	6
UB2810005	4 - 1	6
UB2812005	4 - 2	6
UB2812024	4 - 2	6
UB2813001	4 - 4	6
UB2814001	4 - 4	6

CODE	REF.NO.	PAGE
UB2815001	4 - 4	6
UB2816005	4 - 6	6
UB2816024	4 - 6	6
UB2817005	4 - 10	6
UB2817024	4 - 10	6
UB2818005	4 - 11	6
UB2818024	4 - 11	6
UB2819025	3 - 13	4
UB2822001	3 - 1-10	4
UB2823001	3 - 1	4
UB2832000	3 - 4	4
UB2833001	3 - 5	4
UB2834001	3 - 9	4
UB2837001	3 - 24	4
UB2838000	4 - 13	6
UB2840001	2 - 1	2
UB2842001	2 - 1	2
UB2843001	2 - 1	2
UB2844001	2 - 1	2
UB2845001	2 - 1	2
UB2846001	2 - 1	2
UB2847001	2 - 1	2
UB2848001	2 - 1	2
UB2849001	2 - 1	2
UB2850001	2 - 1	2
UB2851001	2 - 4	2
UB2854001	8 - 1	14
UB2855001	8 - 2	14
UB2859001	3 - 26	4
UB2860001	3 - 27	4
UB2861001	4 - 15A	6
UB2862001	4 - 17	6
UB2863001	2 - 3	2
UB2864001	4 - 14	6
UB2865001	4 - 14	6
UB2866001	4 - 14	6
UB2867001	4 - 14	6
UB2868001	4 - 17	6
UB2869001	4 - 4	6
UB2870001	4 - 4	6
UB2890001	8 - 5	14
UB2891001	8 - 5	14
UB2892001	8 - 5	14
UB2893001	8 - 5	14
UB2894001	8 - 5	14
UB2895001	8 - 5	14
UB2896001	8 - 5	14
UB2897001	8 - 5	14
UB2898001	8 - 5	14
UB2899001	8 - 5	14
UB2900001	8 - 5	14
UB2904001	5 - 2	8
UB2905000	5 - 3	8
UB2907000	5 - 4	8
UB2908000	5 - 5	8
UB2916000	5 - 4	8
UB2917000	5 - 5	8
UB2931001	5 - 1-39	8
UB2932001	5 - 1-39	8
UB2933001	5 - 1-39	8
UB2935001	5 - 1-39	8
UB2937001	5 - 1-39	8
UB2938001	6 - 1	12
UB2948000	5 - 33	8
UB2990001	8 - 5	14
UB2991001	8 - 5	14
UB3011001	3 - 28	4

CODE	REF.NO.	PAGE
UB3013001	8 - 1	14
UB3098001	2 - 2	2
UB3473001	8 - 5	14
UB3475001	2 - 1	2
UB3523001	8 - 3	14
UB3548001	2 - 1	2
UB3551001	1 - 1	2
UB3555000	5 - 7	8
UB3556000	5 - 4	8
UB3557000	5 - 5	8
UB3576001	2 - 1	2
UB3577001	2 - 1	2
UB3578001	8 - 1	14
UB3635001	5 - 1-39	8
UB3636001	8 - 5	14
UB3650001	2 - 2	2
UB3654000	5 - 4	8
UB3655001	5 - 1-39	8
UB3656001	5 - 1-39	8
UB3657001	5 - 1-39	8
UB3664001	1 - 1	2
UB3665001	1 - 1	2
UB3666001	1 - 1	2
UB3671005	4 - 1	6
UB3672005	4 - 1	6
UB3673005	4 - 1	6
UB3674001	4 - 4	6
UB3675001	4 - 4	6
UB3676001	4 - 4	6
UB3677001	4 - 14	6
UB3678001	8 - 1	14
UB3822000	5 - 61	9
UB3939001	4 - 14	6
UB3949001	2 - 1	2
UB3983001	3 - 16-20	4
UB3984001	3 - 20	4
UB4082001	3 - 8	4
UB4108001	1 - 1	2
UB4109005	4 - 1	6
UB4110001	4 - 4	6
UB4111001	4 - 14	6
UB4112001	4 - 15A	6
UB4113001	4 - 16	6
UB4114001	2 - 1	2
UB4115001	2 - 2	2
UB4116001	8 - 1	14
UB4120000	5 - 44	8
UB4121000	5 - 45	8
UB4122000	5 - 46	8
UB4145001	3 - 2	4
UB4164001	5 - 40-81	8
UB4170001	8 - 5	14
UC2512000	5 - 13	8
	5 - 56	9
U16009000	5 - 48	8
U17118000	5 - 37	8
	5 - 80	9
U17120000	5 - 36	8
	5 - 79	9
U33546000	5 - 12	8
	5 - 55	8
U40273000	5 - 59	9
U40275000	5 - 17	8
	5 - 60	9
U42459000	5 - 34	8
	5 - 77	9
U62093001	8 - 3	14

CODE	REF.NO.	PAGE
U82235001	4 - 5	6
U82940000	5 - 9	8
	5 - 52	8
X56243001	5 - 6	8
Y71004000	5 - 67	9
Y73002110	5 - 24	8
Y81021010	5 - 22	8
	5 - 65	9
Y81031010	5 - 21	8
	5 - 64	9
Y81042400	5 - 20	8
	5 - 63	9
Y81533010	5 - 19	8
	5 - 62	9
Z25716001	3 - 11	4
048015346	3 - 10	4
048020346	3 - 3	4
	3 - 6	4
062260406	3 - 12	4
085311615	4 - 9	6
093850373	5 - 50	8
094103120	5 - 32	8
	5 - 75	9
094104120	5 - 29	8
	5 - 72	9
094105120	5 - 28	8
	5 - 71	9
094222120	5 - 39	8
094223110	5 - 27	8
	5 - 70	9
094273110	5 - 26	8
	5 - 69	9
094273120	5 - 31	8
	5 - 74	9
094564110	5 - 25	8
	5 - 68	9
094683120	5 - 73	9
094913120	5 - 30	8
135525001	3 - 25	4
163528001	8 - 4	14
237703001	2 - 2	2
562778000	8 - 3	14
575364001	4 - 8	6
	4 - 18	6

PREVIOUS EDITION(0100)					REVISED EDITION(0200)				
PAGE	REF.NO.	SYMBOL	CODE	Q'TY	PAGE	REF.NO.	SYMBOL	CODE	Q'TY
2	2 - 2	R3,R4 VR1	UB0176001	1	2	2 - 2	R3,R4 VR1	UB3098001	1
4	3 - 18-22		UB2835001	1	4	3 - 18-22		UB3983001	1
4	3 - 22		UB2836001	1	4	3 - 22		UB3984001	1
4	3 - 27		U06681001	2	4	3 - 27		135525001	2
6	4 - 9		U12036002	1	6	4 - 10		085311615	1
8	5 - 1-40		UB2930001	1	8	5 - 1-39		UB2937001	1
8	5 - 25		094155110	2	8	5 - 25		094564110	2
8	5 - 35		UB2619000	1	8	5 - 33		UB2948000	1
4	3 - 2		UB2830000	1	4	3 - 2		UB4145001	1
4	3 - 3		UB2831000	1	4	-			
4	3 - 4		UB0037001	1	4	-			
4	3 - 10		UB0037001	1	4	4 - 8		UB4082001	1



PAGE	REF.NO.	SYMBOL	CODE	NAME
2	2 - 1		UB2841001	USER'S MANUAL, USA. ENGLISH PT-25
4	3 - 2		UB2830000	CLUTCH DOUBLE GEAR
4	3 - 3		UB2831000	CLUTCH GEAR
4	3 - 4		UB0037001	CLUTCH SPRING
8	5 - 1-40		UB2937001	MAIN PCB ASSY PT20/25, USA(SP) PT-25
8	5 - 26	R6	094683110	FIXED RESISTOR, G-C110G683
8	5 - 27	R5	094473110	FIXED RESISTOR, G-C110G473
10	. - 1		UB2930001	MAIN PCB ASSY PT-20, USA (X1) (SP)
10	. - 2		UB2937001	MAIN PCB ASSY PT20/25, USA(SP)





**brother®**