



PARTS REFERENCE LIST

MODEL: P-TOUCH(PT-6/PT-8)

REVISED EDITION

MECHANICS & ELECTRONICS

NOTES FOR USING THIS PARTS REFERENCE LIST

1. In the case of ordering parts, it needs mentioning the following items:

- (1) Code
(2) Q'ty
(3) Description
(4) Revision No.(for a kind of printed circuit boards)

Notes: An order without Parts Code cannot be accepted.

Example

REF.NO.	CODE	Q'TY	DESCRIPTION	REMARKS

(4) Revision No.: marked on a printed circuit board

B48V032 - 3 01 A

----- Design change indication
----- Specification No.
----- Pattern alteration No.
----- Circuit board No.

2. On alternative parts (design changed parts);

They have any one of the following symbols. In such a case, please refer to information, "Technical Information (revised edition)", and order.

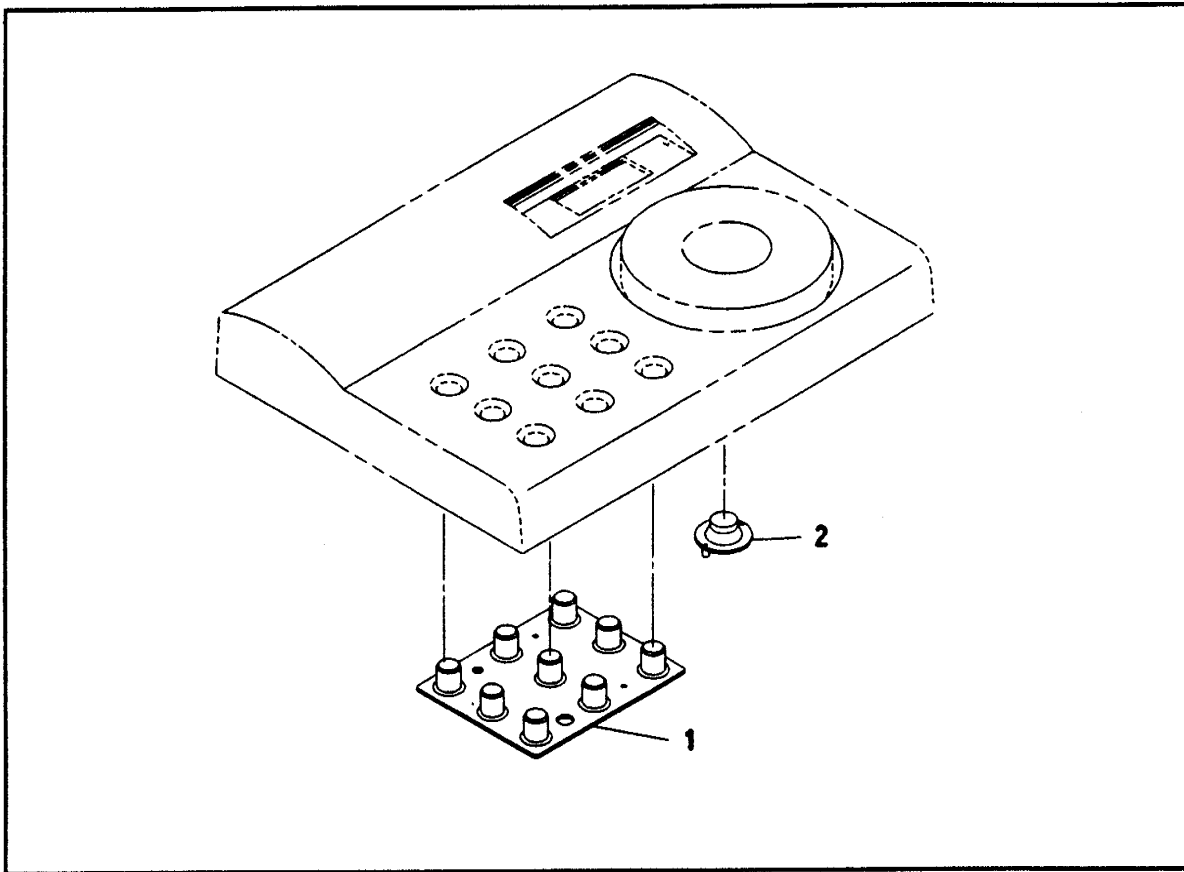
- #A : exchangeable
#B : substitutable new one for old
#D : unexchangeable
: newly-established

3. The original of this list was made based on the information available in January 1989.

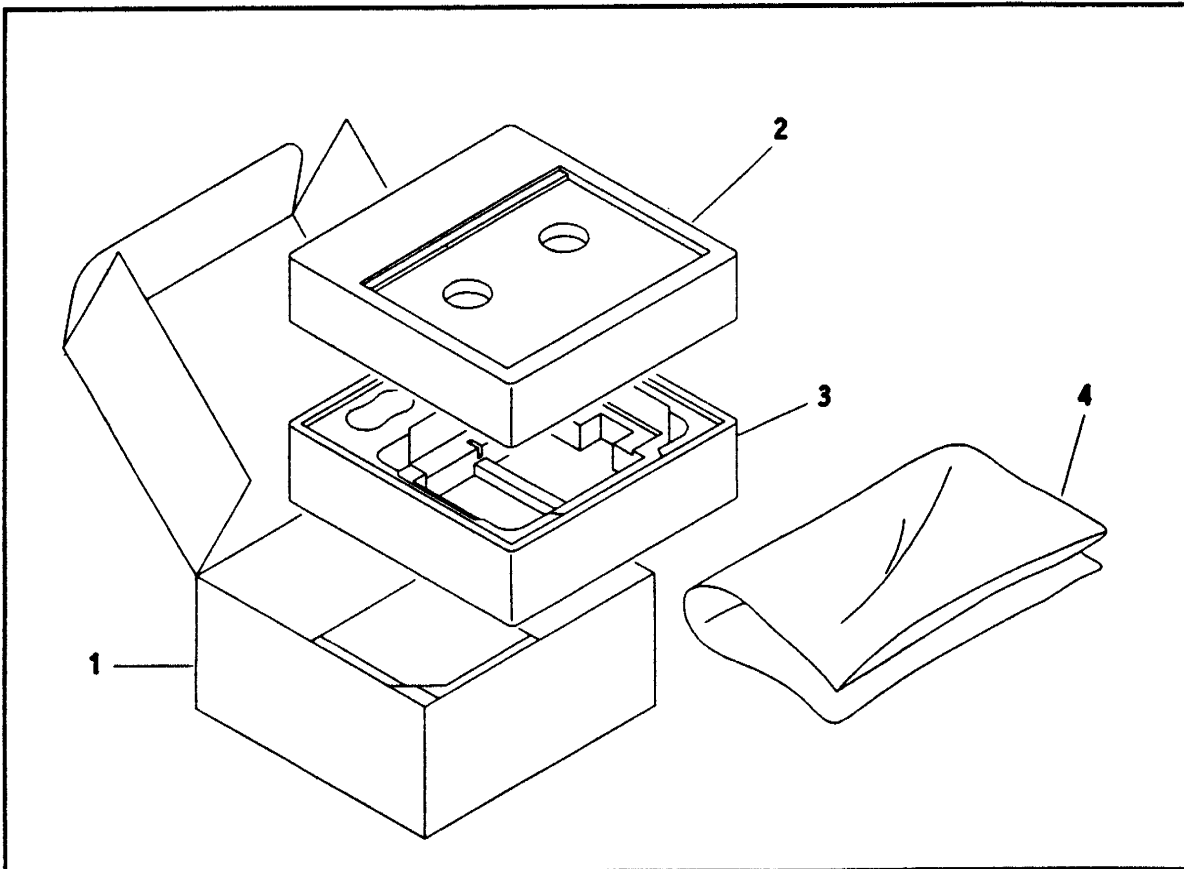
4. Parts are subject to change in design without previous notice.

CONTENTS

1. RUBBER KEY	1
2. PACKING MATERIALS	1
3. MECHANISM	3
4. COVER	5
5. CONTROL PCB ASSEMBLY	7
6. PRINTED MATTER	9
7. ADJUSTING TOOL KIT	11
INDEX	13

1. RUBBER KEY

5V1-201-003

2. PACKING MATERIALS

5V1-201-930

1. RUBBER KEY

REF.NO.	CODE	Q'TY	DESCRIPTION	REMARKS
1	UB0158011	1	RUBBER CONTACT KEY, 9 (PT-6)	#
1	UB0158013	1	RUBBER CONTACT KEY, 9 (PT-8)	
2	UB0064001	1	RUBBER CONTACT, ENTER	

5V1-201-003

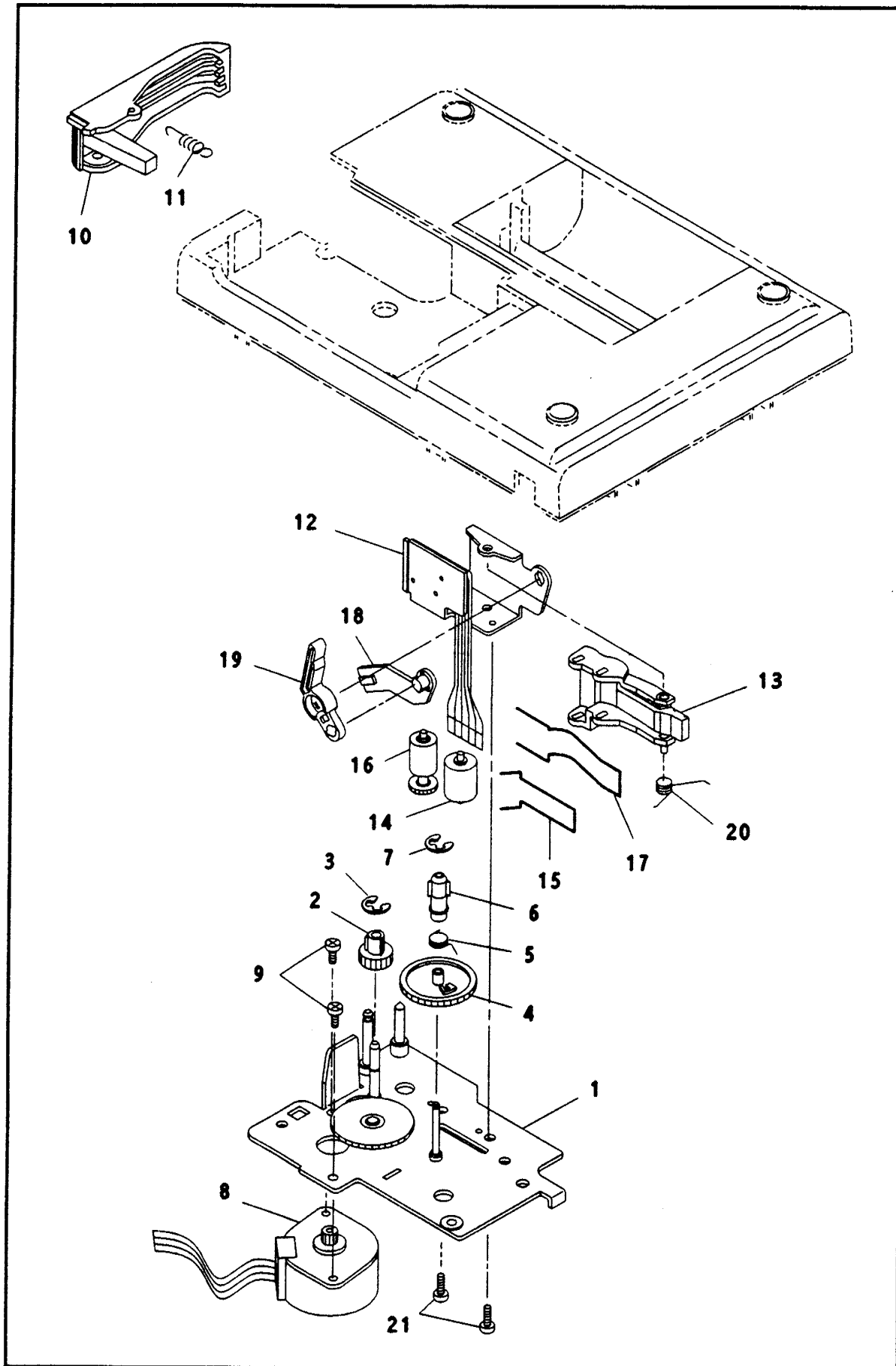
2. PACKING MATERIALS

REF.NO.	CODE	Q'TY	DESCRIPTION	REMARKS
1	UB0170001	1	CARTON, U.S.A. PT-6	#
1	UB0447001	1	CARTON, U.S.A. PT-8	
2	UB0111001	1	STYROFOAM PAD UPPER	
3	UB0277001	1	STYROFOAM PAD LOWER	
4	560464000	1	POLYVINYL BAG	

5V1-201-930

3. MECHANISM

0200

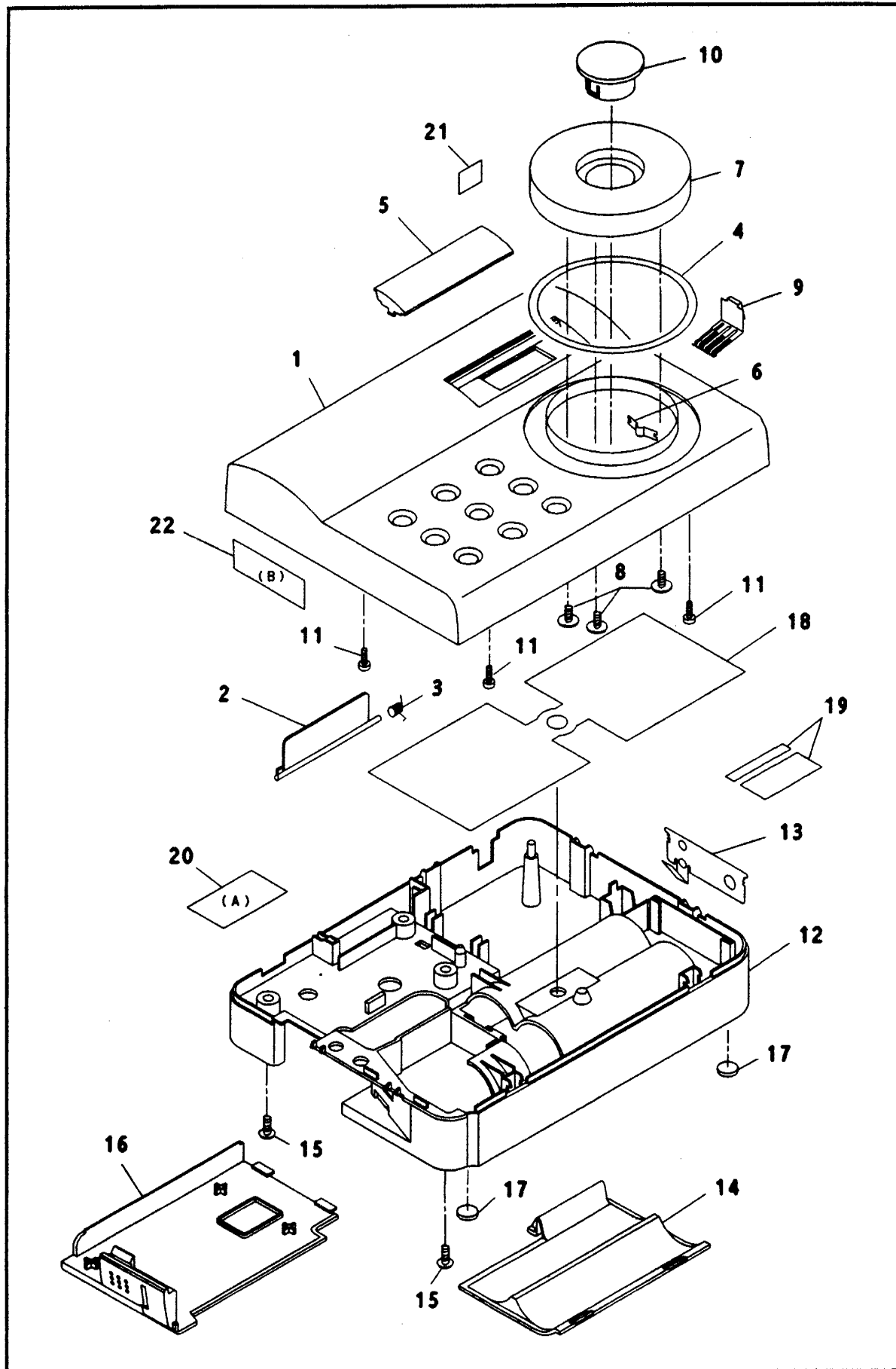


5V1-201-045

3. MECHANISM

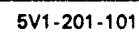
REF.NO.	CODE	Q'TY	DESCRIPTION	REMARKS
1-7	UB0026001	1	MOTOR HOLDER ASSEMBLY	
1	UB0027001	1	MOTOR HOLDER UNIT	
2	UB0034001	1	TAPE FEED ROLLER CAM	
3	048020346	1	SNAP RING, E2	
4	UB0036000	1	TAPE DRIVE GEAR	
5	UB0037001	1	CLUTCH SPRING	
6	UB0038001	1	TAPE DRIVE CAM	
7	048015346	1	SNAP RING, E1.5	
8	Z23951001	1	TAPE FEED MOTOR	
9	062260406	2	SCREW, PAN M2.6X4	
10	UB0039011	1	CUTTER LEVER PT-6	
10	UB0039013	1	CUTTER LEVER PT-8	#
11	UB0127001	1	SPRING, COIL	
12	UB0053001	1	THERMAL HEAD UNIT	
13-17	UB0045001	1	ROLLER HOLDER ASSEMBLY	
13	UB0046001	1	ROLLER HOLDER	
14	UB0047001	1	PLATEN ROLLER	
15	UB0049001	1	PLATEN HOLDING SPRING	
16	UB0050001	1	TAPE FEED SUB ROLLER	
17	UB0129001	1	SUB ROLLER HOLDING SPRING	
18	UB0130001	1	ROLLER RELEASE ROD	
19	UB0061011	1	ROLLER RELEASE LEVER PT-6	
19	UB0061003	1	ROLLER RELEASE LEVER PT-8	#
20	UB0131001	1	SPRING, TORSION	
21	062300405	2	SCREW, PAN M3X4	

4. COVER



4. COVER

REF.NO.	CODE	Q'TY	DESCRIPTION	REMARKS
1	UB0159011	1	BODY COVER, PT-6	
1	UB0460013	1	BODY COVER, PT-8	#
2	UB0060011	1	FONT CARTRIDGE SLOT LID, PT-6	
2	UB0060013	1	FONT CARTRIDGE SLOT LID, PT-8	#
3	UB0132001	1	SPRING, TORSION	
4	UB0134011	1	DIAL RING, PT-6	
4	UB0134001	1	DIAL RING, PT-8	#
5	UB0161001	1	LCD PANEL	
6	UB0062000	1	DIAL HOLDING SPRING	
7	UB0156011	1	DIAL, PT-6	
7	UB0156013	1	DIAL, PT-8	#
8	U52594001	3	SCREW, PAN M2.6X8	
9	UB0063001	1	DIAL SWITCH	#B
10	UB0157011	1	ENTER KEY, PT-6	
10	UB0157013	1	ENTER KEY, PT-8	#
11	U82235001	5	SCREW, PAN M2.6X6	
12	UB0160011	1	BOTTOM COVER, PT-6	
12	UB0442013	1	BOTTOM COVER, PT-8	#
13	UB0070000	1	BATTERY TERMINAL PLATE	
14	UB0071011	1	BATTERY COVER, PT-6	
14	UB0071013	1	BATTERY COVER, PT-8	#
15	575364001	2	SCREW, PAN M3X8	
16	UB0081011	1	TAPE CASSETTE COVER, PT-6	
16	UB0081013	1	TAPE CASSETTE COVER, PT-8	#
17	UB0122001	2	FOOT	
18	UB0018000	1	BLIND SHEET	#B
19	UB0167001	1	LABEL, SERIAL NO. PT-6	
19	UB0440001	1	LABEL, RATING PT-8	#
20	UB0283001	1	LABEL, ATTENTION(A)	#
21	UB0282001	1	LABEL, JACK	#
22	UB0066001	1	LABEL, ATTENTION(B)	#

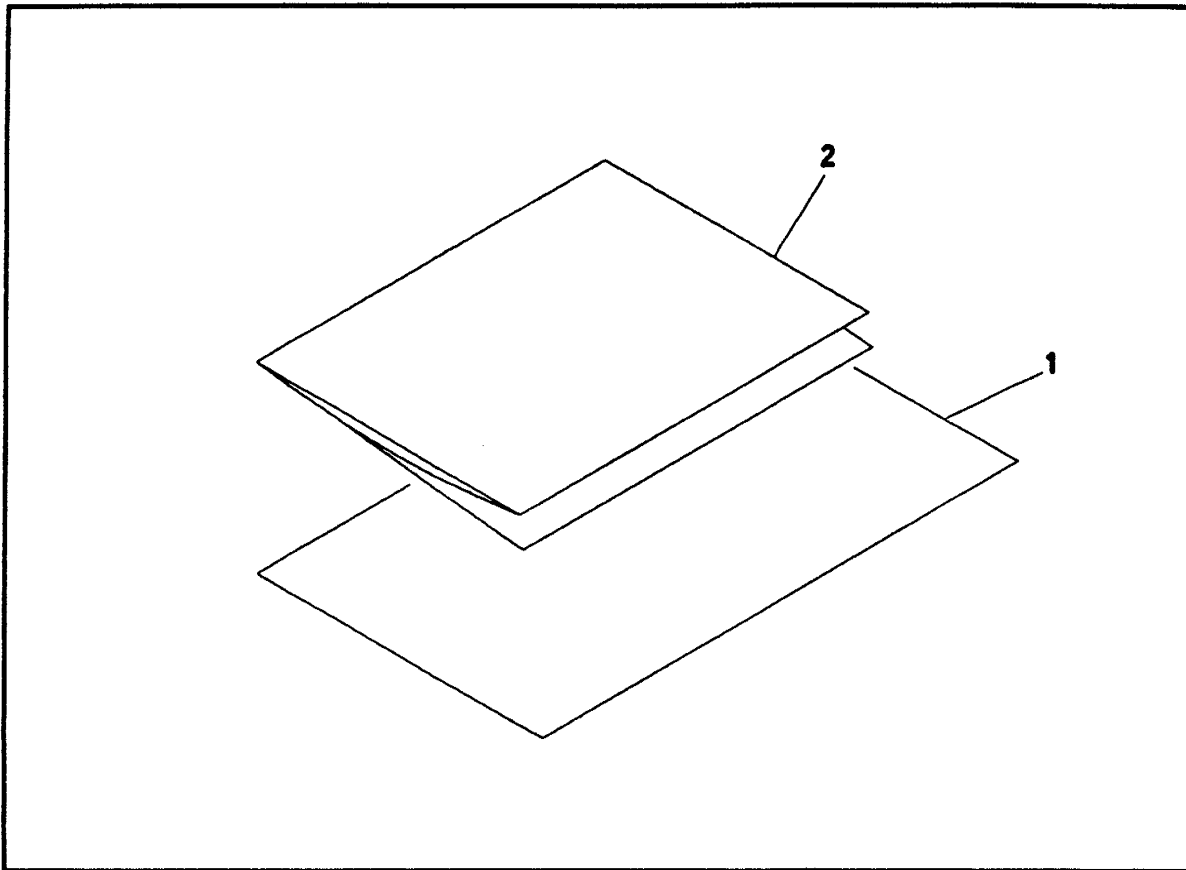


5. CONTROL PCB ASSEMBLY

REF.NO.	SYMBOL	CODE	Q'TY	DESCRIPTION	RMKS
1-63		UB0568001	1	WHOLE CONTROL PCB ASSEMBLY, PT-6	
1-63		UB0569001	1	WHOLE CONTROL PCB ASSEMBLY, PT-8	#
1-37	B482280	UB0571001	1	CONTROL PCB ASSEMBLY, PT-6	
1-37	B482280	UB0572001	1	CONTROL PCB ASSEMBLY, PT-8	#
1	A	UB0150000	1	LCD LR666	
2	B	UB0068001	2	RUBBER CONNECTOR	
3	C	UB0138000	1	LCD HOLDER	
4	D	UB0139000	1	SPACER	
5	#4	UB0154000	1	DIGITAL LSI, CMOS (PT-6)	
5	#4	UB0128000	1	DIGITAL LSI, CMOS (PT-8)	#
6	#5	UB0149000	1	DIGITAL LSI, CMOS (PT-6)	
6	#5	UB0091000	1	DIGITAL LSI, CMOS (PT-8)	#
7	#7	UB0077000	1	DIGITAL LSI, CMOS	
8	#3	UB2940000	1	LINEAR IC, BIPOLAR	
9	#6	231774001	1	DIGITAL LSI, CMOS	
10	#1	UB0141000	1	DIGITAL LSI, CMOS	
11	#2	UB0142000	1	TRANSISTOR, ARRAY	
12	TR4	U33546000	1	TRANSISTOR, SILICON	
13	TR2	UB0144000	1	TRANSISTOR, SILICON	
14	TR1,TR3	U40270000	2	TRANSISTOR, DIGITAL	
15	D1-D5	U16908000	5	DIODE, SILICON	
16	ZD1	UB0146000	1	DIODE, ZENER	
17	XL1	UB0079000	1	OSCILLATOR	
18	C3	Y81533010	1	CAPACITOR, CERAMIC 50C103J	
19	C1,C6,C7	Y81042400	3	CAPACITOR, CERAMIC 25C104	
20	C5	Y81031010	1	CAPACITOR, CERAMIC 50C103	
21	C4	Y81021010	1	CAPACITOR, CERAMIC 50C102	
22	R35	094913120	1	RESISTOR, C110J913	
23	R1-R13,R27, R36-R41	094104120	20	RESISTOR, C110J104	
24	R16,R18,R23, R28,R31-R34	094103120	8	RESISTOR, C110J103	
25	R14	094223110	1	RESISTOR, C110G223	
26	R29	094102120	1	RESISTOR, C110J102	
27	R19,R26	094273120	2	RESISTOR, C110J273	
28	R17	094224120	1	RESISTOR, C110J224	
29	R25	094363120	1	RESISTOR, C110J363	#B
30	R20,R21	094474120	2	RESISTOR, C110J474	
31	R24,R30	094105120	2	RESISTOR, C110J105	
32	VR1	UB0113000	1	RESISTOR, VARIABLE 6P51-5-203N	
33	P2	UB0147000	1	CONNECTOR	
34	P4	X51695001	1	CONNECTOR	
35	R22	U42459000	1	THERMISTOR	
36	R15	094273110	1	RESISTOR, C110G273	
37	C2	UB0082000	1	CAPACITOR, CERAMIC 16C683K	
38-63	B482277	UB0574001	1	POWER SUPPLY PCB ASSEMBLY, PT-6	
38-63	B482277	UB0575001	1	POWER SUPPLY PCB ASSEMBLY, PT-8	#
38	J1	UB0116000	1	AC JACK S-G9312	
39	L2	U16735000	1	COIL	
40	E	UB0117000	1	RELAY HARNESS	
41	P1	UB0163001	1	POWER SUPPLY HARNESS UNIT, PT-6	
41	P1	UB0118001	1	POWER SUPPLY HARNESS UNIT, PT-8	#
42	T1	UB0120000	1	TRANSFORMER	
43	L1	UB0143000	1	COIL MCPT100MH	
44	C2,C4	Y43322601	2	CAPACITOR, ALUMI-ELEC 16B332	
45	C7	Y44701601	1	CAPACITOR, ALUMI-ELEC 10B470	
46	C3	Y42222601	1	CAPACITOR, ALUMI-ELEC 16B222VS	
47	C6	Y41095601	1	CAPACITOR, ALUMI-ELEC 50B10-1	
48	Q4,Q6	U15058000	2	TRANSISTOR, SILICON	
49	Q2,Q3,Q5	U15878000	3	TRANSISTOR, SILICON	
50	Q1	U15775000	1	TRANSISTOR, SILICON	
51	D2	341786000	1	DIODE, SILICON	
52	D1	U15876000	1	DIODE, SILICON	
53	ZD1	U15861000	1	DIODE, ZENER	
54	C5	Y22221001	1	CAPACITOR, CERAMIC 50B222	
55	C1	Y23321205	1	CAPACITOR, CERAMIC 50B332	
56	R5	090470320	1	RESISTOR, A12YJ470	
57	R8	090680120	1	RESISTOR, A14YJ680	
58	R3,R4	090102120	2	RESISTOR, A14YJ102	
59	R7	090272120	1	RESISTOR, A14YJ272	
60	R1,R6	090332120	2	RESISTOR, A14YJ332	
61	R2	090153120	1	RESISTOR, A14AJ153	
62	ZD2	U40161000	1	DIODE, ZENER	
63	F(B482295)	UB0040001	1	FET PCB ASSEMBLY	#

6. PRINTED MATTER

0200



5V1-201-920

6. PRINTED MATTER

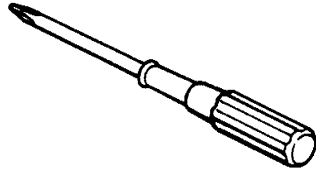
REF.NO.	CODE	Q'TY	DESCRIPTION	REMARKS
1	UB0169001	1	USER'S GUIDE, ENGLISH PT-6	#
1	UB0443001	1	USER'S GUIDE, ENGLISH PT-8	
2	UB0176001	1	WARRANTY CARD, U.S.A.	

5V1-201-920

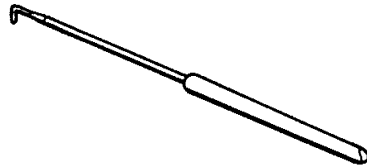
7. ADJUSTING TOOL KIT

0200

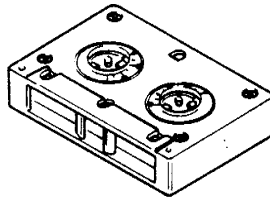
13



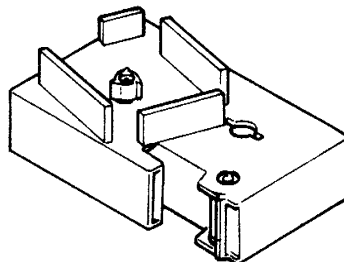
29



119



120



-12-

INDEX

CODE	REF.NO.	PAGE	CODE	REF.NO.	PAGE
UB0018000	4 - 18	6	UB0160011	4 - 12	6
UB0026001	3 - 1-7	4	UB0161001	4 - 5	6
UB0027001	3 - 1	4	UB0163001	5 - 41	8
UB0034001	3 - 2	4	UB0167001	4 - 19	6
UB0036000	3 - 4	4	UB0169001	6 - 1	10
UB0037001	3 - 5	4	UB0170001	2 - 1	2
UB0038001	3 - 6	4	UB0176001	6 - 2	10
UB0039011	3 - 10	4	UB0277001	2 - 3	2
UB0039013	3 - 10	4	UB0282001	4 - 21	6
UB0040001	5 - 63	8	UB0283001	4 - 20	6
UB0045001	3 - 13-17	4	UB0440001	4 - 19	6
UB0046001	3 - 13	4	UB0442013	4 - 12	6
UB0047001	3 - 14	4	UB0443001	6 - 1	10
UB0049001	3 - 15	4	UB0447001	2 - 1	2
UB0050001	3 - 16	4	UB0460013	4 - 1	6
UB0053001	3 - 12	4	UB0568001	5 - 1-63	8
UB0060011	4 - 2	6	UB0569001	5 - 1-63	8
UB0060013	4 - 2	6	UB0571001	5 - 1-37	8
UB0061003	3 - 19	4	UB0572001	5 - 1-37	8
UB0061011	3 - 19	4	UB0574001	5 - 38-63	8
UB0062000	4 - 6	6	UB0575001	5 - 38-63	8
UB0063001	4 - 9	6	U15058000	5 - 48	8
UB0064001	1 - 2	2	U15775000	5 - 50	8
UB0066001	4 - 22	6	U15861000	5 - 53	8
UB0068001	5 - 2	8	U15876000	5 - 52	8
UB0070000	4 - 13	6	U15878000	5 - 49	8
UB0071011	4 - 14	6	U16735000	5 - 39	8
UB0071013	4 - 14	6	U16908000	5 - 15	8
UB0077000	5 - 7	8	U33546000	5 - 12	8
UB0079000	5 - 17	8	U40161000	5 - 62	8
UB0081011	4 - 16	6	U40270000	5 - 14	8
UB0081013	4 - 16	6	U42459000	5 - 35	8
UB0082000	5 - 37	8	U52594001	4 - 8	6
UB0091000	5 - 6	8	U82235001	4 - 11	6
UB0111001	2 - 2	2	U82940000	5 - 8	8
UB0113000	5 - 32	8	X51695001	5 - 34	8
UB0116000	5 - 38	8	Y22221001	5 - 54	8
UB0117000	5 - 40	8	Y23321205	5 - 55	8
UB0118001	5 - 41	8	Y41095601	5 - 47	8
UB0120000	5 - 42	8	Y42222601	5 - 46	8
UB0122001	4 - 17	6	Y43322601	5 - 44	8
UB0127001	3 - 11	4	Y44701601	5 - 45	8
UB0128000	5 - 5	8	Y81021010	5 - 21	8
UB0129001	3 - 17	4	Y81031010	5 - 20	8
UB0130001	3 - 18	4	Y81042400	5 - 19	8
UB0131001	3 - 20	4	Y81533010	5 - 18	8
UB0132001	4 - 3	6	Z23951001	3 - 8	4
UB0134001	4 - 4	6	048015346	3 - 7	4
UB0134011	4 - 4	6	048020346	3 - 3	4
UB0138000	5 - 3	8	062260406	3 - 9	4
UB0139000	5 - 4	8	062300405	3 - 21	4
UB0141000	5 - 10	8	090102120	5 - 58	8
UB0142000	5 - 11	8	090153120	5 - 61	8
UB0143000	5 - 43	8	090272120	5 - 59	8
UB0144000	5 - 13	8	090332120	5 - 60	8
UB0146000	5 - 16	8	090470320	5 - 56	8
UB0147000	5 - 33	8	090680120	5 - 57	8
UB0149000	5 - 6	8	094102120	5 - 26	8
UB0150000	5 - 1	8	094103120	5 - 24	8
UB0154000	5 - 5	8	094104120	5 - 23	8
UB0156011	4 - 7	6	094105120	5 - 31	8
UB0156013	4 - 7	6	094223110	5 - 25	8
UB0157011	4 - 10	6	094224120	5 - 28	8
UB0157013	4 - 10	6	094273110	5 - 36	8
UB0158011	1 - 1	2	094273120	5 - 27	8
UB0158013	1 - 1	2	094363120	5 - 29	8
UB0159011	4 - 1	6	094474120	5 - 30	8

INDEX

CODE	REF.NO.	PAGE
094913120	5 - 22	8
231774001	5 - 9	8
341786000	5 - 51	8
560464000	2 - 4	2
575364001	4 - 15	6

brother