

PARTS CATALOGUE

FOR

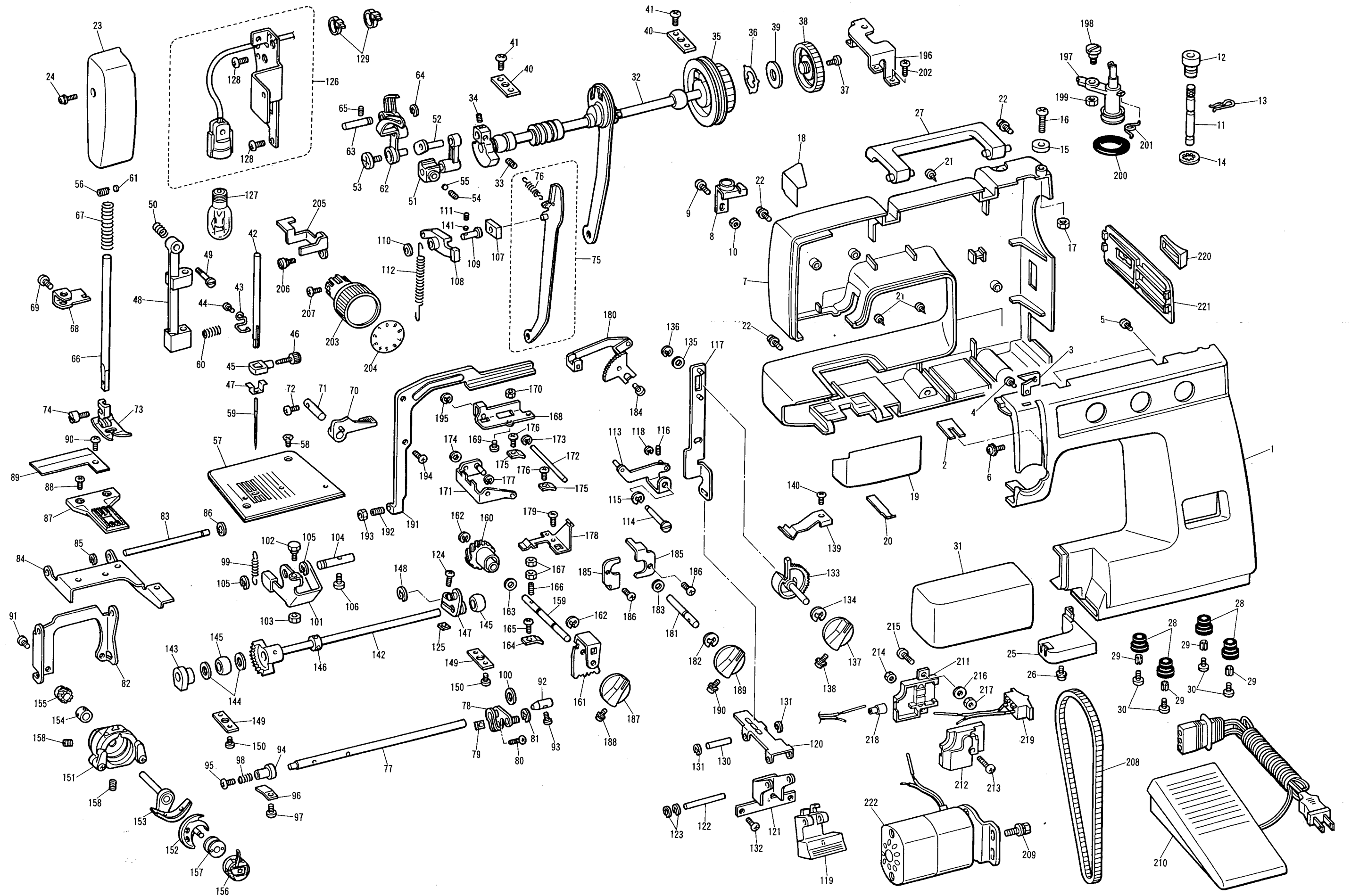
VX 1100/1200

REF. NO.	PARTS NO.	PARTS NAME	REF. NO.	PARTS NO.	PARTS NAME
1	X57886051	FRONT COVER ASSEMBLY	32	X57901051	UPPER SHAFT ASSEMBLY
2	X52442051	THREAD GUIDE	33	X54013051	SET SCREW
3	X57887051	THREAD GUIDE	34	123006051	SCREW
4	060300816	SCREW	35	X54360051	BALANCE WHEEL
5	UC1822001	SCREW	36	X50792051	STOP MOTION WASHER
6	053400806	SCREW	37	100043053	STOP MOTION KNOB SCREW
7	X57890051	REAR COVER	38	X54361051	STOP MOTION KNOB
8	130894001	THREAD GUIDE ASSEMBLY	39	125096051	WASHER
9	060300816	SCREW	40	X57907051	BUSHING PRESSER
10	021300106	NUT	41	X57908001	SCREW
11	188058001	SPOOL PIN	42	136872151	NEEDLE BAR
12	188059051	SPOOL PIN STAND	43	X50109050	NEEDLE BAR THREAD GUIDE
13	188060001	SPRING	44	X53053052	SCREW
14	189908001	STOP RING	45	129627051	NEEDLE CLAMP
15	X54338051	BOBBIN PRESSER	46	131226051	NEEDLE CLAMP SCREW
16	062301616	SCREW	47	125161080	NEEDLE GUIDE PLATE
17	021300106	NUT	48	X57909051	NEEDLE BAR SUPPORTER
18	X57891051	REFLECTOR	49	X57910051	NEEDLE BAR SUPPORTER STUD
19	X57892051	HINGED DOOR	50	120110051	SPRING
20	X53638151	SPRING	51	X52650151	NEEDLE BAR CRANK ROD ASSEMBLY
21	UC1822001	SCREW	52	X54372051	NEEDLE BAR CRANK
21	UC1822001	SCREW	53	132051052	SCREW
23	X57893051	FACE PLATE	54	014680432	SCREW
24	052401406	SCREW	55	100507050	METAL PLATE
25	X57894051	FOOT COVER	56	014400632	SET SCREW
26	136869051	SCREW	57	X57911051	NEEDLE PLATE
27	X57895051	CARRYING HANDLE	58	X50487051	SCREW
28	X58361050	RUBBER CUSHION	59	100028014	NEEDLE #14
29	X56474001	SPACER	60	X54369051	SPRING
30	060400816	SCREW	61	138607050	WASHER
31	X57896051	ACCESSORY TABLE	62	X52651051	THREAD TAKE-UP LEVER ASSEMBLY

REF. NO.	PARTS NO.	PARTS NAME	REF. NO.	PARTS NO.	PARTS NAME
63	X57912051	THREAD TAKE-UP LEVER STUD	94	X54391150	TAPAR POINT STUD L
64	048050346	STOP RING	95	062400416	SCREW
65	014400632	SCREW	96	137734051	PRESSER PLATE
66	128437050	PRESSER BAR	97	X57908001	SCREW
67	X57914051	PRESSER BAR SPRING	98	X54392151	SPRING
68	X57915051	PRESSER BAR BRACKET	99	X54393051	SPRING
69	X52760051	SCREW	100	X53330050	WASHER
70	X51943151	PRESSER FOOT LIFTER	101	X54395051	VERTICAL FEED ARM
71	X54552051	PRESSER FOOT LIFTER STUD	102	X54397051	ADJUSTING SCREW
72	X57913001	SCREW	103	102571056	NUT
73	131046051	ZIGZAG PRESSER FOOT	104	X54398151	VERTICAL FEED SHAFT
74	132730151	SCREW	105	048050346	STOP RING
75	X54375051	FEED CONNECTING ROD	106	X57913001	SCREW
76	X54378051	SPRING	107	X55473051	SLIDE BLOCK
77	X57917050	HORIZONTAL FEED SHAFT	108	X55369050	FEED REGULATOR
78	X54381051	HORIZONTAL FEED ARM	109	X54402150	FEED REGULATOR STUD
79	X54384051	NUT	110	x53330050	WASHER
80	060401416	SCREW	111	014400632	SCREW
81	048050346	STOP RING	112	X54403051	SPRING
82	X57919051	HORIZONTAL FEED PLATE	113	X57922051	FEED REGULATING PLATE
83	X57920051	FEED STAND SHAFT	114	X57926051	FEED REGULATING PLATE STUD
84	X54388151	FEED STAND	115	048070346	STOP RING
85	048030346	STOP RING	116	014400632	SCREW
86	146200051	STOP RING	117	X57927051	FEED REGULATING CONNECTING ROD
87	X54389051	FEED DOG	118	048030346	STOP RING
88	060300416	SCREW	119	X57930051	REVERSE BUTTON WITH CHARACTER
89	X55402151	DUST PROTEC PLATE	119	X57930052	REVERSE BUTTON WITH SYMBOL
90	060300416	SCREW	120	X57931051	REVERSE SPRING
91	060400816	SCREW	121	X57932051	REVERSE BUTTON HOLDER
92	X54390051	TAPER POINT STUD R	122	X57933051	REVERSE BUTTON SHAFT
93	X57913001	SCREW	123	048030346	STOP RING

REF. NO.	PARTS NO.	PARTS NAME	REF. NO.	PARTS NO.	PARTS NAME
124	060401416	SCREW	152	128581051	SHUTTLE HOOK
125	X54384051	NUT	153	X54429051	SHUTTLE DRIVER
126	X57975051	U.S.A. : SEW-LIGHT ASSEMBLY	154	X54432051	COLLAR
	X58229051	CANADA : SEW-LIGHT ASSEMBLY	155	X55384051	SHUTTLE DRIVER SHAFT GEAR
	X57981051	220-240V: SEW-LIGHT ASSEMBLY	156	128582083	BOBBIN CASE ASSEMBLY
127	X53061050	120V : SEW-LIGHT BULB	157	X52800050	BOBBIN
	205336050	240V : SEW-LIGHT BULB	158	014400632	SCREW
128	X57908001	SCREW	159	X57945051	ZIGZAG CAM SHAFT
129	X53169050	BAND	160	X57946050	ZIGZAG CAM
130	X57934051	REVERSE SPRING SHAFT	161	X57947051	NEEDLE POSITION NOTCHED PLATE
131	048030346	STOP RING	162	048050346	STOP RING
132	X57908001	SCREW	163	X53330050	WASHER
133	X57935051	FEED MANUAL SHAFT ASSEMBLY	164	X55862151	PRESSER PLATE
134	048050346	STOP RING	165	X57908001	SCREW
135	128491051	WASHER	166	X57950001	SCREW
136	048050346	STOP RING	167	X56960001	NUT
137	X57938051	Z-F DIAL	168	X57952051	ZIGZAG LINK PLATE
138	U12017051	SCREW	169	X57953051	SCREW
139	X57939051	SPRING	170	X56960001	NUT
140	X57884051	SCREW	171	X57955051	NEEDLE POSITION PLATE
141	138607050	WASHER	172	X57957051	NEEDLE POSITION PLATE SHAFT
142	X58483051	LOWER SHAFT ASSEMBLY	173	048030346	STOP RING
143	X54423051	VERTICAL FEED CAM	174	146200001	STOP RING
144	X51383050	WASHER	175	X55862151	PRESSER PLATE
145	X52664050	LOWER SHAFT BUSHING	176	X57908001	SCREW
146	137767151	COLLAR	177	048030346	STOP RING
147	X57941051	LOWER SHAFT CRANK ASSEMBLY	178	X57960051	NOTCHED PLATE SPRING
148	048050346	STOP RING	179	X57908001	SCREW
149	X57943051	BUSHING PRESSER	180	X57962051	ZIGZAG LEVER ASSEMBLY
150	X57908001	SCREW	181	X57967051	ZIGZAG LEVER SHAFT
151	X56767051	SHUTTLE RACE ASSEMBLY	182	048050346	STOP RING

REF. NO.	PARTS NO.	PARTS NAME	REF. NO.	PARTS NO.	PARTS NAME
183	X53330050	WASHER	213	062301602	SCREW
184	060300816	SCREW	214	021300106	NUT
185	X57968051	Z WIDTH ADJUSTING PLATE	215	060401416	SCREW
186	060400816	SCREW	216	025040133	WASHER
187	X57969051	NEEDLE POSITION DIAL	217	021400205	NUT
188	U12017051	SCREW	218	214808000	EXCEPT CANADA : CLOSED-END CONNECTOR
189	X57938051	F-Z DIAL		131182051	CANADA : CLOSED-END CONNECTOR
190	U12017051	SCREW	219	X57983051	120V : POWER SWITCH ASSEMBLY
191	X57970051	ZIGZAG CONNECTING ROD		X57986051	220-240V : POWER SWITCH ASSEMBLY
192	011401212	SCREW		X58227051	CANADA : POEWR SWITCH ASSEMBLY
193	X56960001	NUT	220	X57554051	POWER SWITCH KEY-TOP
194	060400816	SCREW	221	X57990051	SWITCH HOLDER
195	048040346	STOP RING	222	X57041051	120V : MOTOR
196	X57972051	BOBBIN WINDER BRACKET		X55352051	CANADA : MOTOR
197	X57973051	BOBBIN WINDER ASSEMBLY		13127834642	220V : MOTOR
198	120263051	STUD SCREW		13127134672	230V : MOTOR
199	102571056	SCREW		13127134696	240V : MOTOR
200	120448051	BOBBIN WINDER RUBBER RING		13129234694	110/220V : MOTOR
201	X52102051	SPRING		13129234695	127/220V : MOTOR
202	X57908001	SCREW		- 128585051	ZIPPER FOOT
203	X55903151	THREAD TENSION DIAL		- X52800050	BOBBIN
204	X52419054	THREAD TENSION DIAL DISC		- X57117051	NEEDL SET
205	X57974051	TENSION RELEASER		- 130920051	SPOOL PIN
206	X52073051	STUD SCREW		- 131865051	FEED COVER PLATE
207	X54520051	SCREW		- 194410011	INSTRUCTION BOOK FOR VX1100/1200
208	130944051	BELT		- X60283051	CARTON BOX FOR VX1100
209	X55609001	SCREW		- X60283052	CARTON BOX FOR VX1200
210	J00360051	120 V : FOOT CONTROLLER		- X60284050	STYROFOAM FRONT
	J00492051	220-240V : FOOT CONTROLLER		- X60285050	STYROFOAM REAR
211	138596051	3P SOCKET BODY			
212	138597051	3P SOCKET COVER			



VX1100/1200 (885-410)
T3030128
PRINTED IN TAIWAN