



Brother Document Imaging

Solutions For Business

The Brother Workhorse Series includes a wide portfolio of printers that range from robust, high-volume printers for enterprise and mid to large-sized workgroups, to compact printers that are ideal for small offices.

Color Laser Printers

Enterprise / Mid to Large-sized Workgroups

Optional paper trays can be added:

- › Tower tray (4 x 520-sheet)²
- › 250-sheet capacity (up to 3)²
- › 500-sheet capacity (up to 2)²



Brother HL-L9470CDN
Brother HL-EX470W



HL-L9430CDN

Up to **42ppm**¹
3.5" touchscreen display
2,700 sheets max. paper capacity²



HL-L9470CDN



HL-EX470W



PRINTER SHOWN WITH OPTIONAL TOWER TRAY, CONNECTOR, AND STAPLER FINISHER

KEY FEATURES

- › 520-sheet capacity paper tray²
- › Gigabit Ethernet networking
- › Includes 9,000-page black / 6,500-page color toner cartridges³
- › 15,000-page black / 12,000-page color replacement toner cartridges (TN815 series)³
- › Recommended monthly print volume up to 12,000 pages⁴

All the features of the HL-L9430CDN, plus:

- › High-speed duplex printing (up to 42ppm simplex and duplex)
- › Dual band (2.4GHz / 5GHz) wireless networking
- › Recommended monthly print volume up to 15,000 pages⁴

All the features of the HL-L9470CDN, plus:

- › Includes 15,000-page black / 12,000-page color toner cartridges (TNE80 series)³





Color Laser All-in-Ones

Enterprise / Mid to Large-sized Workgroups

Optional paper trays
can be added:

- › Tower tray (4 x 520-sheet)²
- › 250-sheet capacity (up to 3)²
- › 500-sheet capacity (up to 2)²



MFC-L9630CDN

Up to **42ppm**¹
7" touchscreen display
100 page capacity ADF²
2,700 sheets max. paper capacity²



MFC-L9670CDN



MFC-EX670W



ALL-IN-ONE SHOWN WITH OPTIONAL TOWER TRAY AND CONNECTOR

KEY FEATURES

- › 520-sheet capacity paper tray²
- › Scan speeds up to 52ipm simplex / 104ipm duplex⁵
- › Gigabit Ethernet networking
- › Includes 9,000-page black / 6,500-page color toner cartridges³
- › 15,000-page black / 12,000-page color replacement toner cartridges (TN815 series)³
- › Recommended monthly print volume up to 12,000 pages⁴

All the features of the MFC-L9630CDN, plus:

- › High-speed duplex printing (up to 42ppm simplex and duplex)
- › Dual band (2.4GHz / 5GHz) wireless networking
- › Recommended monthly print volume up to 15,000 pages⁴

All the features of the MFC-L9670CDN, plus:

- › Includes 15,000-page black / 12,000-page color toner cartridges (TNE80 series)³



REPLACEMENT SUPPLIES & OPTIONAL ACCESSORIES

- **TN810BK** Standard Yield Black Toner Cartridge (9,000 pages)³
- **TN810C/M/Y** Series Standard Yield Color Toner Cartridges (6,500 pages each)³
- **TN810XLBK** High Yield Black Toner Cartridge (12,000 pages)³
- **TN810XLC/M/Y** Series High Yield Color Toner Cartridges (9,000 pages each)³
- **TN815BK** Super High Yield Black Toner Cartridge (15,000 pages)³
- **TN815C/M/Y** Series Super High Yield Color Toner Cartridges (12,000 pages each)³

- **TNE80BK** Super High Yield Black Toner Cartridge (15,000 pages)³
- **TNE80C/M/Y** Series Super High Yield Color Toner Cartridges (12,000 pages each)³
- **DR810CL** Drum Unit (100,000 pages)⁶
- **LT-330CL** Optional 250-Sheet Capacity Paper Tray²
- **LT-340CL** Optional 500-Sheet Capacity Paper Tray²
- **TT-4000** Optional Tower Tray with Stabilizer (520-sheet capacity x 4 trays)²
- **TC-4100** Optional Tower Tray Connector (required for TT-4000)

- **SF-4000** Optional Stapler Finisher (HL-L9430CDN, HL-L9470CDN, and HL-EX470W only)
- **SR-100** Replacement Staple Cartridge (10,000 staples)
- **MX-4000** Optional 4-Bin Mailbox / Sorter / Stacker (HL-L9430CDN, HL-L9470CDN, and HL-EX470W only)
- **CB-1010** Optional 15.7" Printer Cabinet / Stand
- **CH-1000** Optional Card Reader Holder
- **NC-9000W** Optional Dual Band Wireless Module (HL-L9430CDN and MFC-L9630CDN only)



Color Laser Printer and All-in-One

Small to Medium-sized Businesses / Small to Mid-sized Workgroups

Optional paper trays can be added:

- › Tower tray (4 x 520-sheet)²
- › 250-sheet capacity (up to 3)²
- › 500-sheet capacity (up to 2)²



HL-L9310CDW

Up to **33ppm**¹
2.7" touchscreen display
2,380 sheets max. paper capacity²



MFC-L9570CDW

KEY FEATURES

- › Gigabit Ethernet and wireless networking
- › 250-sheet capacity paper tray²
- › Includes 6,500-page toner cartridges³
- › 9,000-page replacement toner cartridges (TN439 series)³
- › Recommended monthly print volume up to 6,000 pages⁴

All the features of the HL-L9310CDW, plus:

- › Scan, Copy, Fax
- › Scan speeds up to 52ipm simplex / 104ipm duplex⁵
- › 80-page capacity ADF²
- › 7" touchscreen display



HL-L9310CDW
PLUS TOWER TRAY WITH
CONNECTOR OPTIONS



MFC-L9570CDW
PLUS TOWER TRAY WITH
CONNECTOR OPTIONS

REPLACEMENT SUPPLIES & OPTIONAL ACCESSORIES

- **TN436 Series** Super High Yield Toner Cartridges (6,500 pages each)³
- **TN439 Series** Ultra High Yield Toner Cartridges (9,000 pages each)³
- **DR433CL** Drum Unit (50,000 pages)⁷
- **LT-330CL** Optional 250-Sheet Capacity Lower Paper Tray²
- **LT-340CL** Optional 500-Sheet Capacity Lower Paper Tray²
- **TT-4000** Optional Tower Tray with Stabilizer (520-sheet capacity x 4 trays)²
- **TC-4100** Optional Tower Tray Connector (required of TT-4000)
- **CB-1010** Optional 15.7" Printer Cabinet / Stand
- **CH-1000** Optional Card Reader Holder

Monochrome Laser Printers and All-in-Ones

Enterprise / Mid to Large-sized Workgroups



HL-L6415dw

Up to **52ppm**¹
3.5" touchscreen display
2,700 sheets max. paper capacity²



HL-L6415dwt



HL-EX415dw



HL-L6415dw / HL-EX415dw
PLUS TOWER TRAY AND
STAPLER FINISHER OPTIONS

KEY FEATURES

- › Gigabit Ethernet and dual band (2.4GHz / 5GHz) wireless networking
- › 520-sheet capacity paper tray²
- › Includes 11,000-page toner cartridge⁸
- › 25,000-page replacement toner cartridge (TN925)⁸
- › Recommended monthly print volume up to 16,000 pages⁴

All the features of the HL-L6415dw, plus:

- › Second 520-sheet capacity paper tray²

All the features of the HL-L6415dw, plus:

- › Includes 25,000-page toner cartridge (TNE90)³



MFC-L6915dw



MFC-EX915dw

KEY FEATURES

All the features of the HL-L6415dw, plus:

- › Scan, Copy, Fax
- › Scan speeds up to 52ipm simplex (mono) / 104ipm duplex (mono)⁵
- › 7" touchscreen display
- › 80-page capacity ADF²

All the features of the MFC-L6915dw, plus:

- › Includes a 25,000-page toner cartridge (TNE90)³

Optional paper trays can be added as following:

- › HL-L6415dw / HL-EX415dw: 250-sheet capacity (up to 3), 520-sheet capacity (up to 2), Tower Tray
- › HL-L6415dwt: 250-sheet or 520-sheet capacity (1 total)
- › MFC-L6915dw / MFC-EX915dw: 250-sheet or 520-sheet capacity (2 total), Tower Tray



MFC-L6915dw / MFC-EX915dw
ALL-IN-ONE SHOWN WITH
TOWER TRAY OPTION

REPLACEMENT SUPPLIES & OPTIONAL ACCESSORIES

- **TN920** Standard Yield Toner Cartridge (3,000 pages)⁸
- **TN920XL** High Yield Toner Cartridge (6,000 pages)⁸
- **TN920XL 2PK** High Yield Toner Cartridge Twin Pack (6,000 pages / Cartridge)⁸
- **TN920XXL** Super High Yield Toner Cartridge (11,000 pages)⁸
- **TN920UXXL** Ultra High Yield Toner Cartridge (18,000 pages)⁸
- **TN925** Max Yield Toner Cartridge (25,000 pages)⁸
- **TNE90** Max Yield Toner Cartridge (25,000 pages)⁸
- **DR925** Drum Unit (75,000 pages)⁹
- **LT-5505** Optional 250-Sheet Capacity Paper Tray²
- **LT-6505** Optional 520-Sheet Capacity Paper Tray²
- **SF-4000** Optional Stapler Finisher (HL-L6415dw, HL-L6415dwt, and HL-EX415dw only)
- **SR-100** Replacement Staple Cartridge (10,000 staples)
- **MX-4000** Optional 4-Bin Mailbox / Sorter / Stackers (HL-L6415dw, HL-L6415dwt, and HL-EX415dw only)
- **TT-4000** Optional Tower Tray with Stabilizer (520-sheet capacity x 4 trays)² (except HL-L6415dwt)
- **CB-2000** Optional 15.7" Printer Cabinet / Stand
- **CH-1000** Optional Card Reader Holder



Monochrome Laser Printer and All-in-One

Small to Medium-sized Businesses



HL-L5215dw

Up to **48ppm¹**
1,390 sheets max.
paper capacity²



MFC-L5715dw

KEY FEATURES

- › Gigabit Ethernet and dual band (2.4GHz / 5GHz) wireless networking
- › 250-sheet capacity paper tray²
- › Includes 6,000-page toner cartridge⁸
- › 18,000-page replacement toner cartridge (TN920UXXL)⁸
- › Recommended monthly print volume up to 5,000 pages⁴

All the features of the HL-L5215dw, plus:

- › Scan, Copy, Fax
- › Scan speeds up to 30ipm simplex (mono) / 60ipm duplex (mono)⁵
- › 50-page capacity ADF²
- › 3.5" touchscreen display



REPLACEMENT SUPPLIES & OPTIONAL ACCESSORIES

- TN920 Standard Yield Toner Cartridge (3,000 pages)⁸
- TN920XL High Yield Toner Cartridge (6,000 pages)⁸
- TN920XL 2PK High Yield Toner Cartridge Twin Pack (6,000 pages / Cartridge)⁸
- TN920XXL Super High Yield Toner Cartridge (11,000 pages)⁸
- TN920UXXL Ultra High Yield Toner Cartridge (18,000 pages)⁸
- DR925 Drum Unit (75,000 pages)⁹
- LT-5505 Optional 250-Sheet Capacity Paper Tray²
- LT-6505 Optional 520-Sheet Capacity Paper Tray²
- CB-2000 Optional 15.7" Printer Cabinet / Stand

The Brother Workhorse MFC-J5955DW Business Color Inkjet All-in-One Printer offers vibrant, borderless output up to 11"x17" with comparable performance and operating costs as a business laser printer.

Color Inkjet All-in-One

Small to Medium-sized Businesses



MFC-J5955DW

Up to **30ppm**¹⁰
Up to **11"x17"** printing
3.5" touchscreen display

KEY FEATURES

- › Ethernet and dual band (2.4GHz / 5GHz) wireless networking
- › Dual 250-sheet capacity trays²
- › 50-page capacity ADF²
- › Includes high yield starter ink cartridges¹¹
- › Low cost printing via 6,000-page black / 5,000-page color replacement ink cartridges (LC406XL series)¹²
- › Integrated NFC card reader
- › BR-Script¹³ and PCL6 emulations
- › Recommended monthly print volume up to 250 - 3,500 pages⁴



Ideal for multiple verticals:

- › **Retail:** Impactful POS displays and signage, seasonal decorations
- › **Hospitality / Restaurants:** Menus, event invitations, special promotions
- › **Real Estate:** On-demand brochures, open house flyers, property listings
- › **Financial:** Large format financial documents and reports for easier readability
- › **Education:** Classroom materials, posters, newsletters, administrative documents
- › **Construction / Engineering:** Drawings and construction plans

REPLACEMENT SUPPLIES

- LC406BK Standard Yield Black Ink Cartridge (3,000 pages)¹²
- LC406C/M/Y Series Standard Yield Color Ink Cartridge (1,500 pages each)¹²
- LC4063PK 3-Pack of Standard Yield Cyan, Magenta, and Yellow Ink Cartridges (1,500 pages each)¹²
- LC406XLBK High Yield Black Ink Cartridge (6,000 pages)¹²
- LC406XLC/M/Y Series High Yield Color Ink Cartridge (5,000 pages each)¹²

The Brother Workhorse Series now includes models designed to meet the needs of decentralized workforces and are ideal for small offices with lower print volumes. These devices feature a space-saving design.



Compact Digital Color Printer and All-in-One

Small Offices / Small Workgroups



HL-L8245cdw

Up to **31ppm**¹
2.7" touchscreen display
530 sheets max. paper capacity²



MFC-L8395cdw



KEY FEATURES

- › Gigabit Ethernet and dual band (2.4GHz / 5GHz) wireless networking
- › 250-sheet capacity paper tray²
- › Cost-efficient output using 4,500-page black / 4,000-page color replacement toner cartridges (TN229XXL series)³
- › Recommended monthly print volume up to 4,000 pages⁴

All the features of the HL-L8245cdw, plus:

- › Scan, Copy, Fax
- › Scan speeds up to 28ipm simplex (mono) / 58ipm duplex (mono)⁵
- › 50-page capacity ADF²
- › 3.5" touchscreen display



Monochrome Laser Printer and All-in-One



HL-L2865dw

Up to **36ppm**¹



MFC-L2980dw

KEY FEATURES

- › Ethernet and dual band (2.4GHz / 5GHz) wireless networking
- › 250-sheet capacity paper tray²
- › Cost-efficient output using 5,000-page replacement toner cartridge³
- › Includes 1,200-page toner cartridge⁸
- › Mobile device printing¹⁴
- › Recommended monthly print volume up to 2,500 pages⁴

All the features of the HL-L2865dw, plus:

- › Scan, Copy, Fax
- › 50-page capacity ADF²
- › 3.5" touchscreen display
- › Recommended monthly print volume up to up to 3,500 pages⁴

REPLACEMENT SUPPLIES & OPTIONAL ACCESSORIES

DIGITAL COLOR

- **TN229BK** Standard Yield Black Toner Cartridge (1,500 pages)³
- **TN229C/M/Y** Series Standard Yield Color Toner Cartridge (1,200 pages each)³
- **TN229 4PK** 4-Pack of Standard Yield Black, Cyan, Magenta, and Yellow Toner Cartridges (1,500 BK / 1,200 CMY pages)³
- **TN229XLBK** High Yield Black Toner Cartridge (3,000 pages)³
- **TN229XL 2PK** High Yield Black Toner Cartridge Twin Pack (3,000 pages / Cartridge)³

- **TN229XLC/M/Y** Series High Yield Color Toner Cartridge (2,300 pages each)³
- **TN229XXLBK** Super High Yield Black Toner (4,500 pages)³
- **TN229XXLC/M/Y** Series Super High Yield Color Toner (4,000 pages each)³
- **DR229CL** Drum Unit (20,000 pages)¹⁵
- **LT-310CL** Optional 250-Sheet Capacity Paper Tray²

MONOCHROME LASER

- **TN830** Standard Yield Toner Cartridge (1,200 pages)⁸
- **TN830XL** High Yield Toner Cartridge (3,000 pages)⁸
- **TN830XL 2PK** High Yield Toner Cartridge Twin Pack (3,000 pages / Cartridge)⁸
- **TN835** Super High Yield Toner Cartridge (5,000 pages)⁸
- **DR830** Drum Unit (15,000 pages)¹⁶

Value Beyond the Box

Meet the demanding needs of the modern office with Brother hardware, software, and service-based solutions, designed to give you a competitive advantage.

Visit brother-usa.com/solutions to learn more.

Value Services

From enhanced collaboration to increased document security, Brother Value Services can help your mid to large-sized organization streamline processes, reduce operational and device running costs, and create efficiencies required for long-term success.

Value Services include:

Secure Print Advanced

Secure print job release solution without the high overhead cost.

Custom User Interface

Modified user interface for business workflows and security policy.

Special Solutions Team

Customized solutions for unique configuration and deployment requirements.

Tungsten ControlSuite (formerly Kofax)

Secure, govern, and manage every aspect of information distribution.

PaperCut MF

Monitor and control copying, printing, and faxing.

SecureRx by TroyRx

Print CMS-compliant prescriptions directly onto plain paper.



Security Services

To help protect against print security threats and maintain compliance, Brother devices are equipped with robust Triple Layer Security features.

DEVICE

Restrict and limit access to the device at the individual, group, and activity level.

DOCUMENT

Protect documents in transit to and from print devices.

NETWORK

Safeguard against outside threats using higher level security protocols.

VPP Value Print Program

Provides discounts on Genuine Brother toner, ink, and drums for customers who commit to purchase and install select Brother printers and All-in-Ones, along with the requisite Brother Genuine Supplies. Includes a limited warranty extension to cover three full years of warranty coverage.

LOW COST PER PAGE (CPP)

With discounts on Brother Genuine Supplies, the Value Print Program helps to drive CPP among the lowest in the industry.

DEVICE UPTIME

Device unification with Brother branded equipment allows for readily available replacement parts. Downtime is virtually eliminated, increasing employee productivity.

CUSTOMER NETWORK SECURITY AND INTEGRITY

With VPP there is no requirement to load third-party software on a network, reducing the need for on-site visits.

Brother Assessment Services

Brother Assessment Services can help customers optimize their print and imaging environment. From predictive analytics to full, on-site infrastructure optimization assessments, our team of experts help customers develop strategies to increase productivity, lower costs, increase security, and reduce their environmental impact.

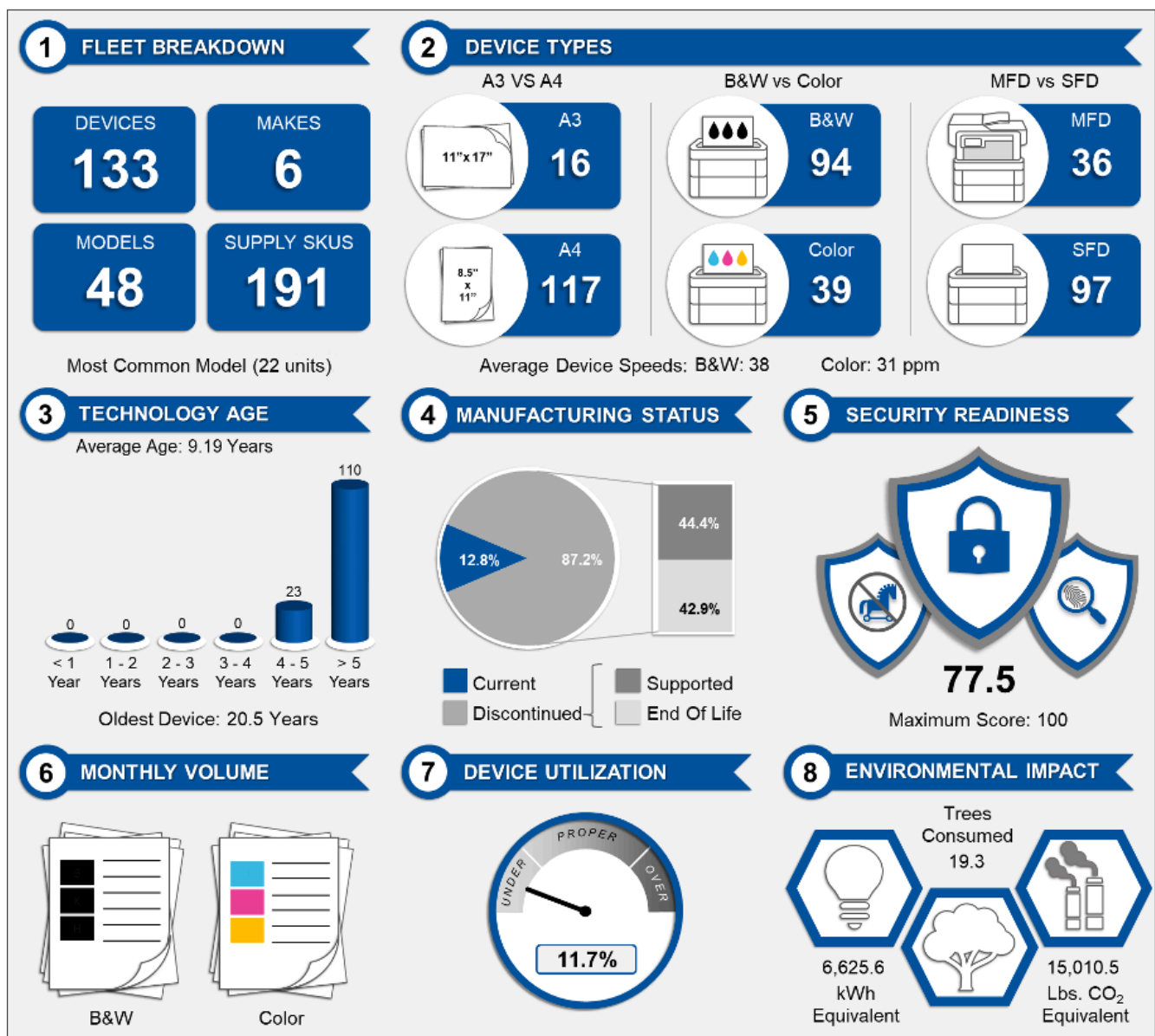
Print Cost Predictive Analysis

Snapshot of a print environment to generate a fleet status and total cost of ownership report.

Infrastructure Optimization Assessment

Audit of select business locations, mapping out devices in a floor plan, and recommending a cost-effective solution.

SAMPLE ASSESSMENT AT-A-GLANCE





1 Based on one-sided printing. Change from default setting required.

2 Maximum capacity based on using 20 lb. paper.

3 Approximate toner cartridge yields in accordance with ISO/IEC 19798 (letter/A4).

4 The recommended range of monthly printed pages to achieve the best possible performance and printer life. Printers are intended to handle occasional usage beyond this range with little or no effect. Consistently printing above the recommended print volume, however, may adversely affect the print quality or life of the machine. It is always best to choose a printer with an appropriate recommended print volume to allow for any anticipated increase in printing needs.

5 Color and monochrome scan speeds in accordance with ISO/IEC 17991 with all advanced features turned off, using letter-sized paper at 200/300dpi.

6 Approximate yield based on 3 pages per job (letter/A4 single-sided pages). The number of pages may be affected by a variety of factors including but not limited to media type and media size.

7 Approximately 50,000 pages based on 3 pages per job and 30,000 pages based on 1 page per job and (letter/A4 single-sided pages). The number of pages may be affected by a variety of factors including but not limited to media type and media size.

8 Approximate toner cartridge yields in accordance with ISO/IEC 19752 (letter/A4).

9 Approximately 75,000 pages based on 3 pages per job and 45,000 pages based on 1 page per job (letter/A4 simplex pages). The number of pages may be affected by a variety of factors including but not limited to media type and media size.

10 ISO print speed based on ISO/IEC 24734 (after first set of ISO test pages). For more details, please visit www.brother-usa.com/printspeed.

11 Actual yield of initial cartridges will be approximately 89% of replacement LC406XL black and 39% of replacement LC406XL Color Series, due to ink system initialization. Approximate page yields stated in accordance with ISO/IEC 24711. For more page yield information, see www.brother.com/pageyield.

12 Approximate page yield stated in accordance with ISO/IEC 24711. For additional page yield information, see www.brother.com/pageyield.

13 BR-Script3 is PostScript®3™ compatible.

14 Requires connection to a wireless network.

15 Approximately 20,000 pages based on 1 page per job and 30,000 pages based on 3 pages per job (letter/A4 single-sided pages). The number of pages may be affected due to a variety of factors including but not limited to media type and media size.

16 Approximately 15,000 pages based on 1 page per job (letter/A4 single-sided pages). The number of pages may be affected due to a variety of factors including but not limited to media type and media size.

All trademarks and registered trademarks referenced herein are the property of their respective companies. Images are for illustrative purposes only. All specifications subject to change without notice.