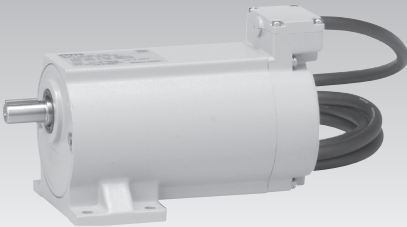


Designed for reliability. Built for endurance.

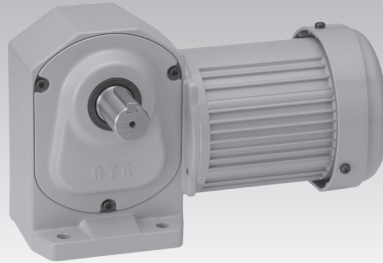


GEARMOTORS FOR THE FOOD INDUSTRY

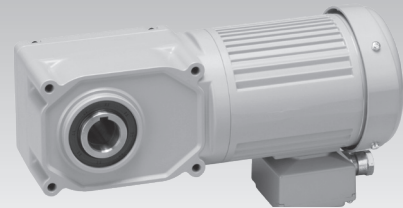
Parallel Shaft



Right Angle Shaft



Symmetric Hollow Bore



- **Helps eliminate costly downtime:** All gearmotors carry a high-grade grease standard to effectively lubricate the gearmotor for life and eliminate costly downtime for lubrication changes.
- **Helps increase operational efficiencies and reduce time and labor:** Brother Gearmotors are compact in size, sealed for life and provide superior sealing capabilities.
- **E-Coat process provides long-lasting paint coating:** The electrostatic application of our high-quality paint assures a consistently tough and chemically-resistant coating to withstand the harshest environments.
- **Numerous standard options and configurations:** Brother Gearmotors have several options and mounting configurations to ensure compatibility.
- **Broad product mix:** Brother Gearmotor offers a wide range of products, allowing for one-stop shopping.

H1 APPROVED FOOD GRADE GREASE AVAILABLE

Special designs are our standard. To learn more, visit BrotherGearmotors.com






brother
at your side

Brother International Corporation, OEM/Gearmotor Division
200 Crossing Blvd., Bridgewater, NJ 08807-0911
866-523-6283 • Fax: 908-575-3743
BrotherGearmotors.com

Features of the Washdown IP-65:

- Superior resistance to water ingress and harsh chemicals used in food processing plants
- Designed to keep water out
- Protected against pressure jets of water
- Protected against dust
- Terminal boxes are specially designed, sealed and gasketed

Food Processing Series Overview

PARALLEL SHAFT	G Series Parallel Shaft <ul style="list-style-type: none"> • Foot Mount • Flange Mount • 3 Phase – 1/50th HP ~ 1/6th HP • 1 Phase – 1/50th HP ~ 1/6th HP • Ratios: 5:1 ~ 1800:1 	<ul style="list-style-type: none"> • Gearmotors, Gearmotors with Brakes • Washdown (IP65) Gearmotors, Gearmotors with Brakes 	
	G3 Series Parallel Shaft <ul style="list-style-type: none"> • Foot Mount • Flange Mount • 3 Phase – 1/8th HP ~ 3 HP • 1 Phase – 1/8th HP ~ 1/2 HP • Ratios: 5:1 ~ 1200:1 	<ul style="list-style-type: none"> • Gearmotors, Gearmotors with Brakes • Washdown (IP65) Gearmotors, Gearmotors with Brakes 	
RIGHT ANGLE SHAFT	Right Angle Mini H Series <ul style="list-style-type: none"> • Foot Mount • Flange Mount • 3 Phase – 1/50th HP ~ 1/10th HP • 1 Phase – 1/50th HP ~ 1/10th HP • Ratios: 10:1 ~ 1800:1 	<ul style="list-style-type: none"> • Gearmotors, Gearmotors with Brakes • Washdown (IP65) Gearmotors, Gearmotors with Brakes • Variable Speed Control Gearmotors 	
	Right Angle Mid H2 Series <ul style="list-style-type: none"> • Foot Mount • Flange Mount • 3 Phase – 1/8th HP ~ 3 HP • 1 Phase – 1/8th HP ~ 1/2 HP • Ratios: 5:1 ~ 1500:1 	<ul style="list-style-type: none"> • Gearmotors, Gearmotors with Brakes • Washdown (IP65) Gearmotors, Gearmotors with Brakes 	
HOLLOW BORE	Hollow Bore F2 Series <ul style="list-style-type: none"> • Symmetric Hollow Bore • 3 Phase – 1/50th HP ~ 1/10th HP • 1 Phase – 1/50th HP ~ 1/10th HP • Ratios: 10:1 ~ 240:1 	<ul style="list-style-type: none"> • Gearmotors, Gearmotors with Brakes • Washdown (IP65) Gearmotors, Gearmotors with Brakes • Variable Speed Control Gearmotors 	
	Hollow Bore Mid F3 Series <ul style="list-style-type: none"> • Symmetric Hollow Bore • 3 Phase – 1/8th HP ~ 3 HP • 1 Phase – 1/8th HP ~ 1/2 HP • Ratios: 5:1 ~ 1500:1 	<ul style="list-style-type: none"> • Gearmotors, Gearmotors with Brakes • Washdown (IP65) Gearmotors, Gearmotors with Brakes 	