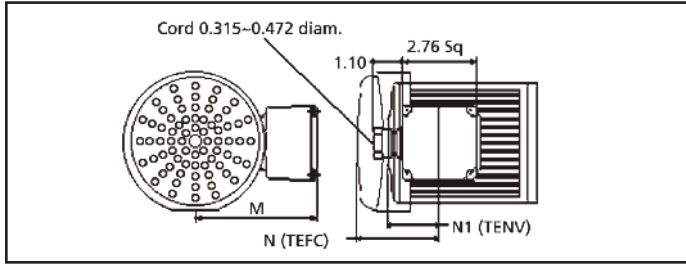
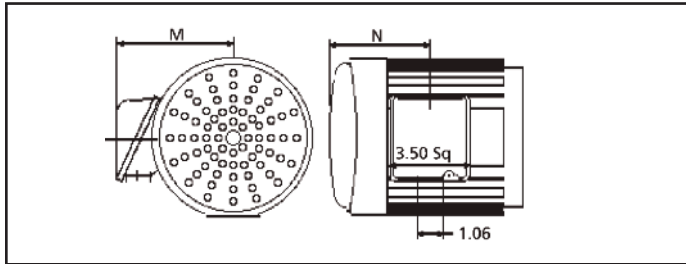


**Fig. 1.18: "A" Box: G3, H2 Models**  
3 Phase: 1/8, 1/4, 1/2 Hp; 1 Phase: 1/8, 1/4 Hp



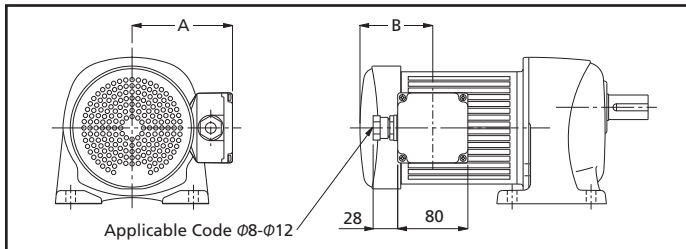
Dim	Three Phase			Single Phase	
	1/8 Hp	1/4 Hp	1/2 Hp	1/8 Hp	1/4 Hp
N1 (1/8 Hp 3Ø only)	1.87	—	—	—	—
N (motor)	—	3.09	3.33	3.09	3.29
N (Brakemotor)	3.44	3.76	4.10	3.44	3.96
M	4.61	4.61	4.84	4.61	4.61

**Fig. 1.20: "S" Box: G3, H2 Models**  
1/2 Hp Single Phase; 1, 2, 3 Hp Three Phase



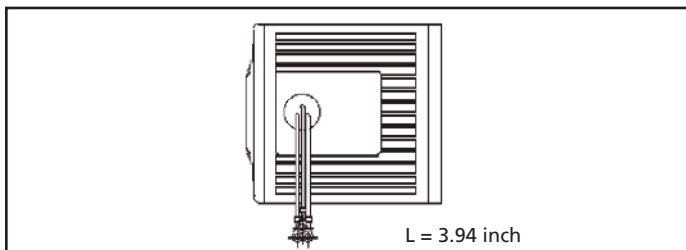
Dim	Single Phase	Three Phase		
	1/2 Hp	1 Hp	2 HP	3 Hp
N (motor)	3.98	2.36	2.78	2.78
N (Brakemotor)	4.25	2.78	3.58	3.58
M	4.80	4.80	5.24	5.24

**Fig 1.22: "E" Box: IP-65 G3, H2 Models**  
1/8, 1/4, 1/2, 1, 2, 3 Hp

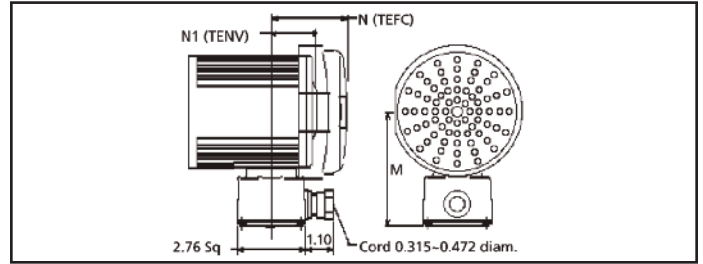


Dim	1/8 Hp	1/4 Hp	1/2 Hp	1 Hp	2 Hp	3 Hp
A	4.27	4.27	4.51	4.98	5.41	5.41
N (motor)	1.87	3.07	3.27	3.70	4.35	4.35
N (Brakemotor)	3.90	5.04	5.55	6.44	n/a	n/a

**Fig. 1.24: 1/8 Hp 3 Phase**  
G3, H2, F3 Models

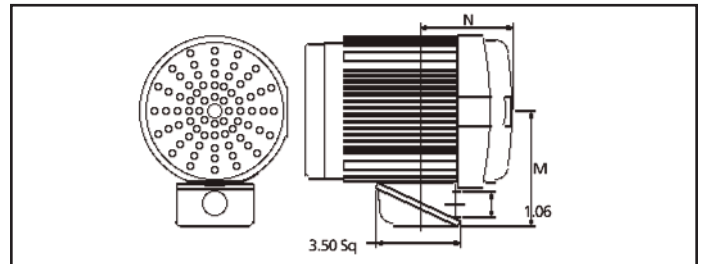


**Fig. 1.19: "A" Box: F3 Model**  
3 Phase: 1/8, 1/4, 1/2 Hp; 1 Phase: 1/8, 1/4 Hp



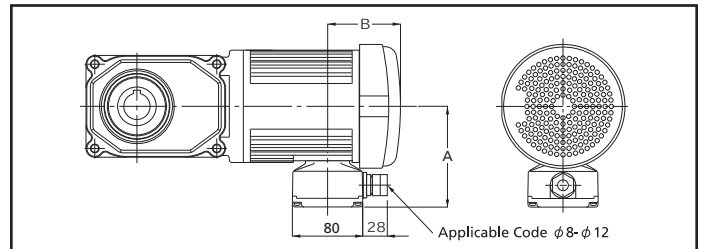
Dim	Three Phase			Single Phase	
	1/8 Hp	1/4 Hp	1/2 Hp	1/8 Hp	1/4 Hp
N1 (1/8 Hp 3Ø only)	1.87	—	—	—	—
N (motor)	—	3.09	3.33	3.09	3.29
N (Brakemotor)	3.44	3.76	4.10	3.44	3.96
M	4.61	4.61	4.84	4.61	4.61

**Fig. 1.21: "S" Box: F3 Models**  
1/2 Hp Single Phase; 1, 2, 3 Hp Three Phase



Dim	Single Phase	Three Phase		
	1/2 Hp	1 Hp	2 HP	3 Hp
N (motor)	—	2.36	2.78	2.78
N (Brakemotor)	—	2.78	3.58	3.58
M	—	4.80	5.24	5.24

**Fig 1.23: "E" Box: IP-65 F3 Models**  
1/8, 1/4, 1/2, 1, 2, 3 Hp



Dim	1/8 Hp	1/4 Hp	1/2 Hp	1 Hp	2 Hp	3 Hp
A	4.27	4.27	4.51	4.98	5.41	5.41
N (motor)	1.87	3.07	3.27	3.70	4.35	4.35
N (Brakemotor)	3.90	5.04	5.55	6.44	n/a	n/a

**Fig. 1.25: 1/8, 1/4, 1/2 Hp 1 Phase & 3 Phase**  
G3, H2, F3 Models

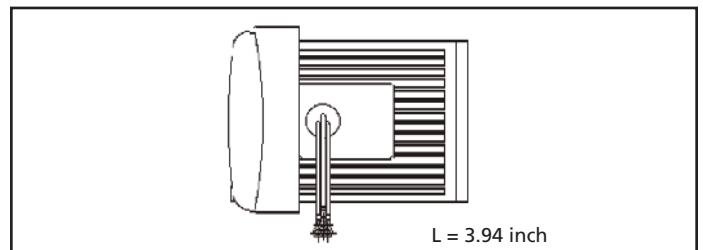


Fig 1.24A: Directing the Position of the Terminal Box or Lead Wires

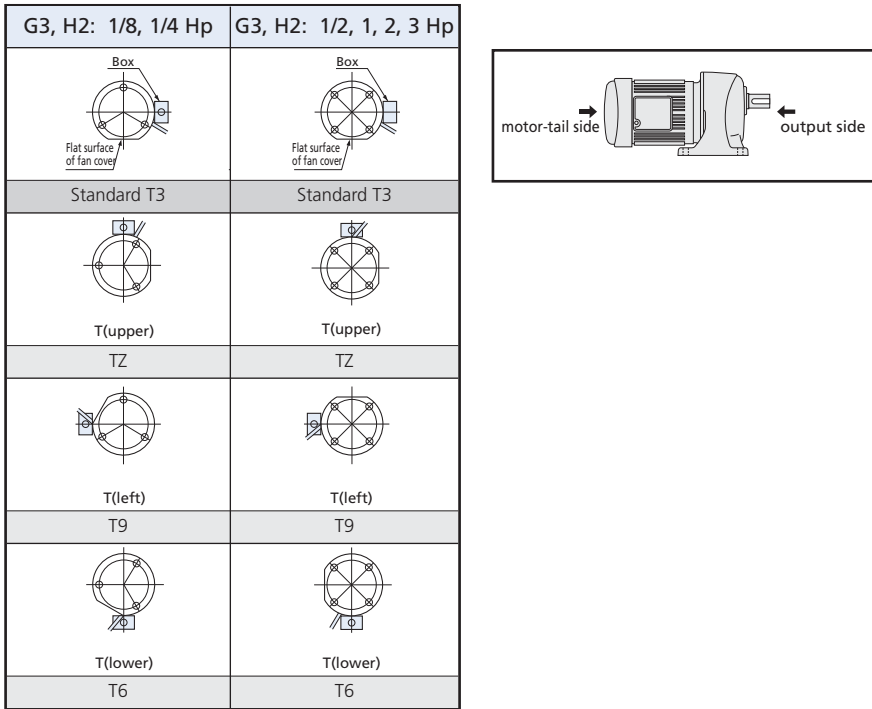
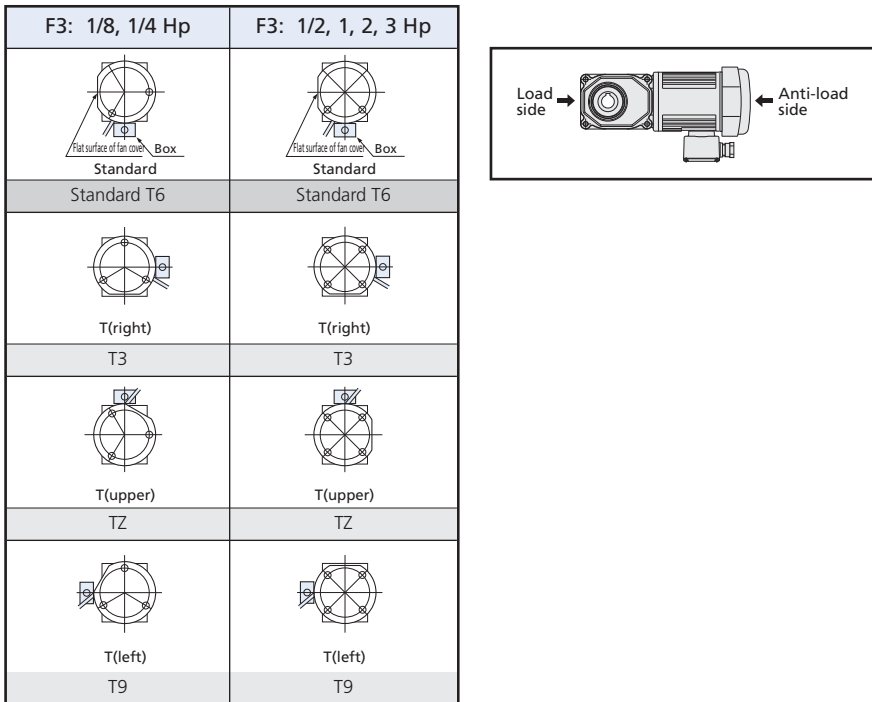


Fig 1.24B: Directing the Position of the Terminal Box or Lead Wires



Notes:

1. Please select the "X" at the end of the gearmotor part number and indicate the position code per the applicable chart.
2. If the standard box position is desired or acceptable, there is no need to make any designation.
3. The position of the 1/8 and 1/4 Hp models cannot be rotated in the field in 90 degree increments. Positioning at 90 degree increments is achieved in the factory by position of the tapped mounting holes. Please be careful and specify prior to shipment.