

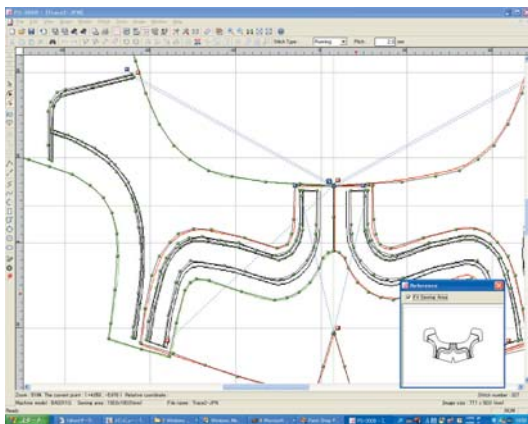
# PS-300B

## Sewing data programming software

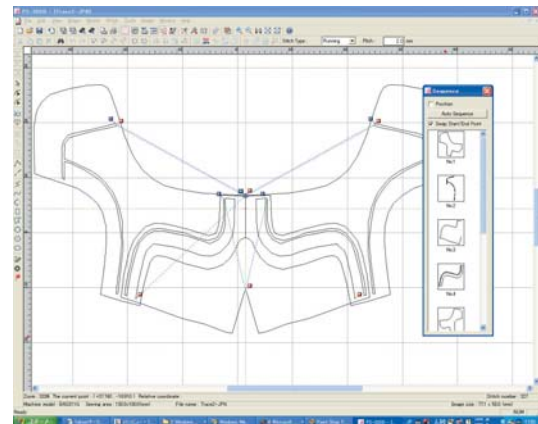
This is a software package that lets you create, edit and modify sewing patterns for electronic sewing machines using a personal computer with no skill required.

- Product value can be increased by creating your original sewing patterns.
- Sewing pattern data can be easily modified, which reduces time taken for resizing and correcting.
- Existing sewing pattern data for previous models and external data can also be used.

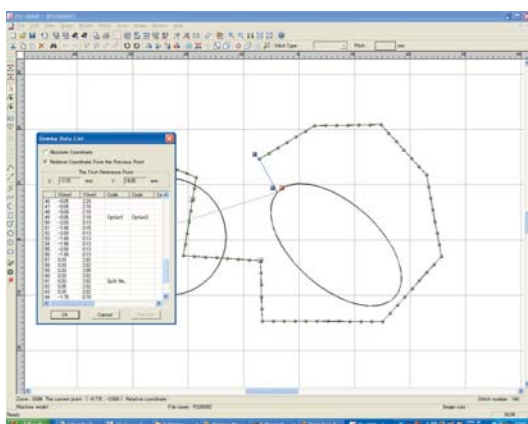
### Easily creates and edits sewing data



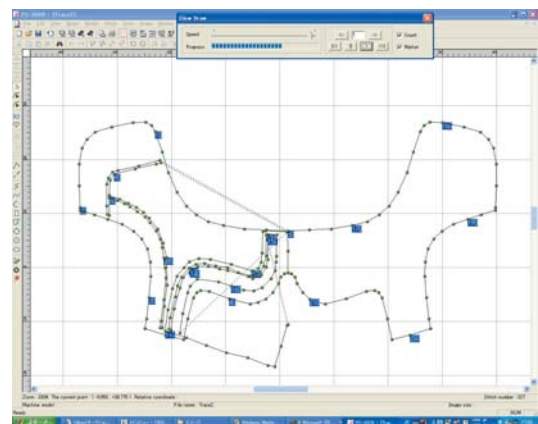
An image is displayed on the screen. You can create data while checking the image. You can enlarge and edit a part of the data while checking the entire design.



The order of sewing data to be sewn can be easily checked and changed.



Sewing data can be accurately and easily created and modified by a batch entry function of numeric data (unit: mm).



With a sewing simulating function, sewing data can also be checked stitch by stitch.

### External data can be loaded

Embroidery format data (DST, DSB and DSZ) and also DXF format CAD data can be read, which expands the range of design.

# Specifications

## ● Models and Media for PS-300B

- <Electronic Bar Tacker>  
KE-430F series: SD card
- <Programmable Electronic Pattern Sewer>  
BAS-300G series: CF card\*<sup>1</sup>
- <Electronic Zigzag Lock Stitcher>  
Z-8550A,8560A:CF card\*<sup>1</sup>
- <Electronic Button Holer>  
HE-800A: PROM\*<sup>2</sup>

Please ask to your local Brother sales office or dealers for other models.

\*<sup>1</sup> For a CF card, a CF card reader commercially available is required.

\*<sup>2</sup> To use a PROM, a PROM writer commercially available is required.

Electronic Bar Tacker



Programmable Electronic Pattern Sewer



Electronic Button Holer



Electronic Zigzag Lock Stitcher



## ● PC Hardware and System Requirements for PS-300B

### Computer Requirements

Device	Requirement
Driver operating conditions	256MB RAM(512MB is recommended), 128MB of available hard disk space(256MB is recommended), 1GHz CPU
Clock frequency	500MHz
Memory	256MB
Input/Output device	CD-ROM drive
Hard disk	Free space of 30MB or more
Display performance	1024 × ~768dot, 16bit
Input & Output Port	USB port 1

OS Windows XP(32 bit),Vista(32 bit/64 bit), 7(32 bit/64 bit)

Input Device Mouse

Output Device CF card reader/writer, SD card

● Main function : Create, change, edit, set, file input/output, data input/output

● Condition of data creation : Image area 1600mm×1600mm, Minimum pitch 0.05mm,  
Max. No. of stitches 100,000 stitches

● Language : English, Chinese, Japanese, French

Setting ranges vary depending on model that data is output to.

Windows is a registered trademark of Microsoft Corporation in the United States and/or other countries.



Working with you for a better environment  
www.brotherearth.com

Please read instruction manual before using the machine for safety operation.

-Product specifications are subject to change for improvement without notice.

-Photographs are for illustration purpose. They may not represent actual operating conditions and may display optional parts.

**CHINA**

**BROTHER MACHINERY SHANGHAI LTD.**

<http://www.brother.cn/>

+86-21-3135-3355

**HONG KONG**

**BROTHER INTERNATIONAL (HK) LTD.**

<http://www.brother.com.hk/>

+852-3589-9040

**ASIA**

**BROTHER INTERNATIONAL SINGAPORE PTE. LTD.**

<http://www.brother.com.sg/>

+65-6536-8891

**EUROPE AFRICA, MIDDLE EAST**

**BROTHER INTERNATIONALE INDUSTRIEMASCHINEN GmbH**

<http://www.brother-ism.com/>

+49-2822-6090

**AMERICAS**

**BROTHER INTERNATIONAL CORPORATION**

<http://www.brother-usa.com/>

+1-908-704-1700

**brother**

**BROTHER INDUSTRIES, LTD.**

1-5, Kitajizoyama, Noda-cho, Kariya-shi, Aichi 448-0803, Japan.

Phone: 81-566-95-0088 Fax: 81-566-25-3721 <http://www.brother.com/>

2013.7.150308768 Vol.2