

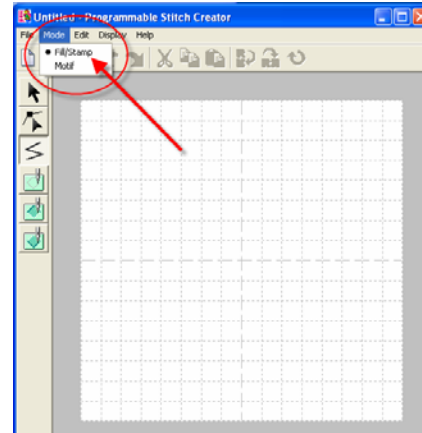


Programmable Stitch Creator

Creating a Stitch

The Programmable Stitch Creator is used to create patterns for programmable fill stitches, motif fill stitches and motif line stitches.

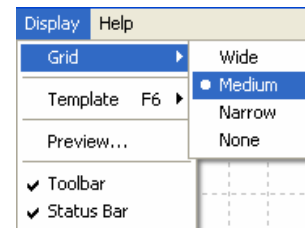
1. Open **Programmable Stitch Creator**.
2. Select **Mode** and choose the **Fill/Stamp** option.



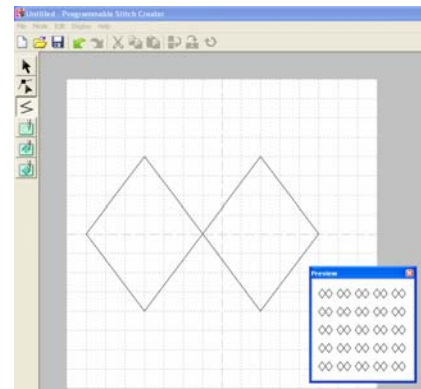
3. Use the **Line drawing tool** to create a design.



4. **Click** on the **Display** pull-down menu, and choose **Grid** and select the size of grid to use. Choose **Medium** for the purposed of this tutorial.



5. To create a pattern, start by **clicking** in the **grid**. Every time the **mouse** is **clicked** on, a point will be added to the design.



6. To **undo** a point, **click** the **right mouse button**.
7. When the pattern is **completed**, **double click** on it.





8. To **edit** points of the pattern, **click** on the **point editing tool**. Then **click** on any **points** that need to be moved or deleted.
9. **Save** the pattern by **clicking** on **FILE** on the menu bar menu and **select SAVE AS**. Name the file and note it will automatically be saved as a .pas file.

Programmable Stitch Creator

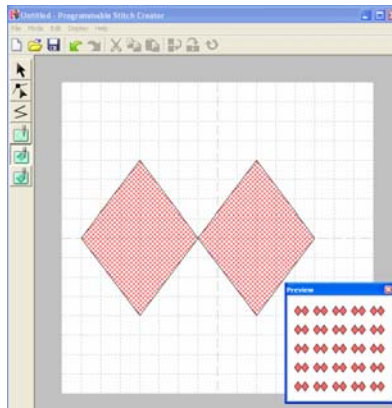
Engraved Stamp

1. Open **Programmable Stitch Creator**.

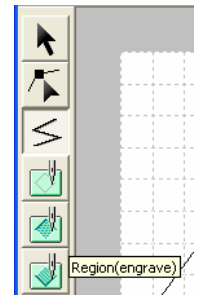
2. To create an engraved stamp, select the **Line tool** . Create the pattern by **clicking** in the design area **or** create an engraved stamp from a previously created fill stitch.

3. Click on the region engrave tool  in the left vertical tool box.

4. Click on the fill stitch to apply the engraved stamp. Notice how the shape turns red




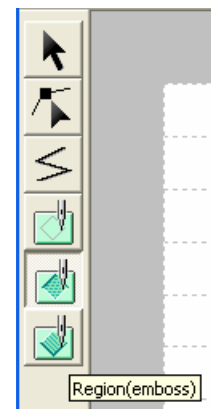
5. Under the **FILE** pull down menu, click on **SAVE AS** to name and save the file.



Creating an Embossed Stamp

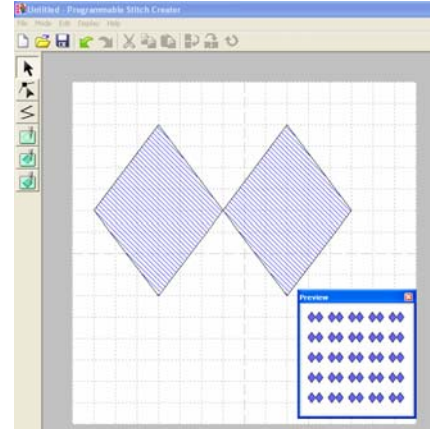
1. Open **Programmable Stitch Creator**.

2. To create an embossed stamp select the Line tool . Create the pattern by clicking in the design area **or** create an embossed stamp from a previously created fill stitch.



Programmable Stitch Creator

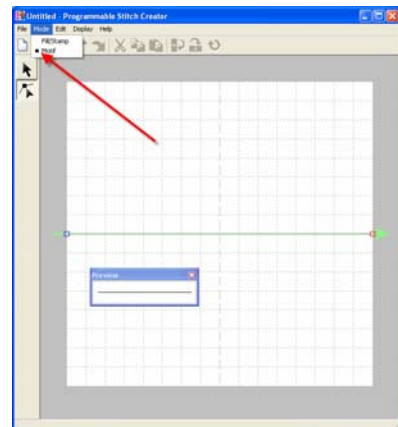
- Next click on the fill stitch image to apply the embossed stamp. Notice a blue grid appears on the embossed pattern.



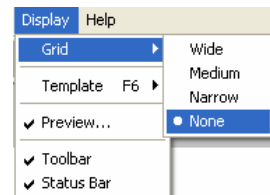
Creating Motif Stitches

Motif Stitches are created by working between two points. To create the motif, points will be added between the red and blue editing points.

- Open **Programmable Stitch Creator**.
- From the **Mode** pull-down menu, choose **Motif**.




- From the **Display** menu select **Grid** and then choose **none** to remove the grid.
- Under the **File** pull down menu, choose **Template Open**.



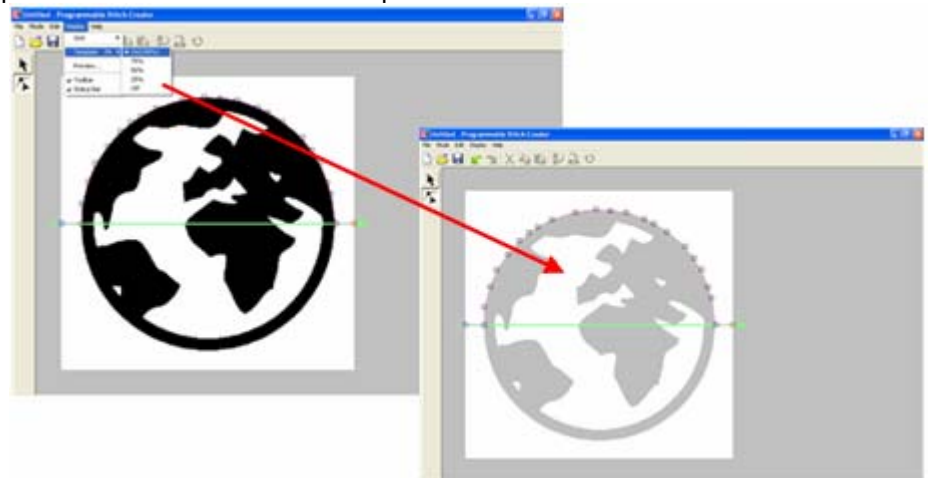
Programmable Stitch Creator

5. Select a clip art file and click **Open**.

6. Click on the Point Edit tool . Two points will appear on the line. The blue one is the starting point and the red one is the ending point.



7. **Add** the first **editing point** by **clicking** on the **line**. Notice the edit point darkens when clicked on. **Click** and **drag** each **point** to form a shape.
8. Remember, all editing points must be added between the blue and the red points.
9. Fading the image may make it easier to see the editing points. To fade the image, go to the **Display** menu and choose **Template**. The image can be faded from "0" to "100" percent in increments of 25 percent.



When the motif is finished select **File** and choose **Save As** to name and save the motif. The program will automatically assign the .pmf file extension