

LASER MFC ⁵ⁱⁿ¹

FAX • PRINTER • COPIER • COLOR SCANNER • PC FAX



The high-speed laser all-in-one for your business.

- Print and copy at up to 30ppm
- 33.6K bps high-speed Super G3 fax modem
- Up to 50-page Auto Document Feeder
- 802.11b/g wireless, Ethernet, High-Speed USB 2.0, and Parallel interfaces*
- Automatic duplex (two-sided) printing, copying, scanning* and faxing



MFC-8870DW

At your side.
brother®

Enhance security and reduce errors through these high-performance features

Walk-up access to LDAP network address books

Save time and reduce errors with instant direct access through your network-connected MFC to a virtually infinite number of e-mail and fax addresses stored in your LDAP network address books. Simply use the large, clear 5-line LCD display on your MFC's control panel to view the contacts stored in your LDAP network address books and scroll to select the address you need. Then you can quickly send faxes and Internet faxes to your selection, and perform scan-to-e-mail-address functions – all directly from the listings in your LDAP network address book.

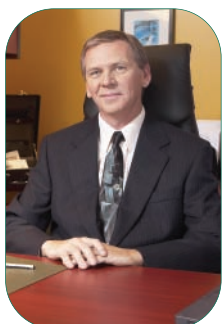


Enhanced scan-to-FTP-server features

Scan documents, images, and faxes, and post these to FTP sites directly through your network-connected MFC. It's ideal if you often post files to FTP sites for easy retrieval and download by permitted users inside your firm, perhaps in remote locations, or by corporate partners, such as clients, vendors, agents and others. Multiple FTP server profiles – specific sites and folder locations, access codes, and scanning preferences, for example – can be saved in presets for custom applications, cutting the time spent, and potential errors.

Scan to other fax-server applications

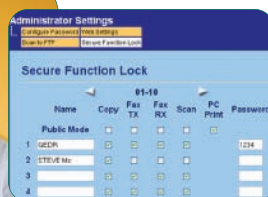
Law firms, accounting firms, consulting operations, and many other entities often use network-based fax-server applications. If you employ a leading network-based fax-server application in your enterprise, your MFC can be set up as a document scanning device to work with it. Transmission of your faxes will then take place through your preferred network-based fax-server application, rather than through your MFC's built-in fax modem.



Boss Clearance:
All features



Intern Clearance:
Copy only



Feature lock by user

Walk-up copying, scanning, and faxing are all great conveniences with your MFC, but you may not want everyone to have access to every feature, especially if you are handling confidential records and data on a routine basis. So your MFC provides the ability for your administrator to set various levels of password-protected access to certain features, for each of up to 25 different users per machine. Through this feature, you could restrict specific employees such as part-time workers or interns from access to scan-to-e-mail functions or other avenues for sending data outside your walls.

The high-speed laser all-in-one for your business

Speed, convenience and great print quality for everyone in your office.

For busy offices and small connected workgroups, Brother's new high-speed laser all-in-one delivers exceptional versatility, print quality and performance in a highly efficient, space-saving design.

You can print, copy, fax, and scan from any connected PC – all from the Brother MFC-8870DW.

If you've been searching for a better way to provide the variety of functions you and your people need without the headaches and unnecessary expense of buying and maintaining multiple devices, this new Multi-Function Center® from Brother is the answer.



High-quality color scanning

Up to 50 page auto document feeder

1200 DPI
up to x1200

High-Performance, All-in-One for your Business or Workgroup

The Brother MFC-8870DW can dramatically boost productivity in your home office, small office, or small connected workgroup. It easily replaces a variety of dedicated devices by including high-speed printing, convenient flatbed copying, color and mono scanning, faxing and more – all in one space-saving product.

There's no trade-off in performance and features for all this convenience.

Backlit 5-line LCD

BR-Script3
for PostScript® 3™ Compatibility
& PCL 6
For GDS Printing



Built-in Super G3 33.6K bps fax-modem and enhanced fax features



Improve productivity and efficiency, and be ready for the future.

Convenient flatbed design – plus an auto document feeder

Lift the top cover and you'll see a legal-size (8.5" x 14") glass, ready for you to make copies, scan documents or images and for faxing, too. It's perfect for copying, multi-copying (up to 99), color or mono scanning, or faxing pages from bound materials like reports and magazines. The top cover even lifts up further to accommodate bulkier materials like books.

You'll get great copies at up to 1200 x 600 dpi resolution, and high-quality color scans at up to 19200 x 19200 (interpolated) resolution.

For copying, scanning or faxing multiple-page documents, use the built-in auto document feeder to automatically feed up to 50 pages at a time, unattended – a great time saver.



Versatile paper handling, with expandability for your future needs

The MFC-8870DW ships with a 250-sheet paper tray that can be adjusted to handle letter or legal-size paper. It also features a 50-sheet, fold-down multi-purpose tray for envelopes, card stock, or for feeding individual sheets, such as letterhead. An optional second 250-sheet adjustable lower paper tray (LT-5300[†]) can be added to boost total input capacity to up to 550 sheets.



Standard 50-sheet fold-down multi-purpose tray

Standard 250-sheet adjustable paper tray

Optional 2nd 250-sheet adjustable paper tray[†]

Network-ready – for the wired or wireless network you have now, or will have in the future

The MFC-8870DW is ready for the way you work now – or the way you might work in the future. If you don't already have a network just connect it to your PC using its High-Speed USB 2.0 or Parallel interface. If you already have an Ethernet network the Brother MFC-8870DW offers a built-in Ethernet interface as well as 802.11b/g wireless, along with easy setup software to connect to your wired or wireless router.



Connect one user directly via USB or Parallel...



...or multiple users via wired or wireless router on a shared network

Automatic two-sided printing, copying, scanning* and faxing



The Brother MFC-8870DW also provides built-in automatic duplex (two-sided) printing, copying, scanning* and faxing. This feature can help you cut paper costs by as much as half, while giving you the ability to create professional two-sided documents for reports, proposals and other tasks, quickly and easily.



Output as 2 single sheets



or



One double-sided (duplexed) sheet

Automatic duplex printing

You can take a typical document file and simply choose to print it as a duplexed document right from the MFC-8870DW's print menu, with the orientation you prefer. Your selection then happens automatically, without the need to reload the paper to print the other side.

Automatic duplex copying and scanning*

Now you can copy or scan two sides of the same document and either print the copy or store the scan as two single-sided pages, or as a single two-sided page. Or, you can copy or scan two single-sided documents and produce a copy or store a scan as a single two-sided page.

Automatic duplex faxing

Scan a two-sided document for faxing with only one step and it will be received as two single-sided pages. Also, cut paper costs by printing out the multiple-page faxes you receive as double-sided pages.

Wireless network connectivity



The Brother MFC-8870DW provides flexibility for both wired and wireless workgroup connectivity. Besides high-speed USB 2.0, Parallel and Ethernet Interfaces, the MFC-8870DW includes a 802.11b/g interface for wireless connectivity.

This means that if you have an 802.11b/g-enabled PC or notebook, you can connect to the MFC-8870DW wirelessly, right from that PC or notebook, in AD HOC mode. In infrastructure mode – the most common wireless environment – you can connect and take advantage of all the features of the MFC-8870DW through your wireless access point/router.

It's a perfect fit for offices where you have a mix of wired and wireless-enabled desktop PC and notebook users, some of whom connect via an established Ethernet network, and others who are on the move during the work day. It's also ideal for offices with "drop-in" users – such as sales people equipped with wireless-enabled notebooks – who normally work outside the office.

Connection possibilities with the MFC-8870DW



MFC-8870DW

Technical Specifications



Key Features at a Glance

MFC-8870DW

- Up to 30ppm print speed
- Up to 1200 x 1200 dpi print resolution
- Built-in 802.11b/g wireless, Ethernet, High-Speed USB 2.0, and Parallel interfaces*
- Up to 50-sheet auto document feeder
- Flatbed design for easy copying, faxing and scanning of bound documents
- Legal-size document glass
- Built-in automatic duplex printing, copying, scanning* and faxing
- SecureEasySetup™ (with your capable router†)

MFC-8870DW		
Fax	Modem Speed/Best Transmit Speed	33.6K bps
	Auto Document Feed Capacity	Up to 50 Pages
	Paper Capacity (Std./Max.† Pgs.)	300/550 Sheets
	Paper Size(s)	Letter, Legal, A4, B5, A5, B6, A6, EXE
	Standard Memory Capacity (Max. Pgs.¹)	32MB (600)
	Broadcasting (# of Locations)	390
	Quick Scan¹ (Seconds/Page)	Yes (2 sec.)
	Remote Retrieval	Yes
	Fax Forwarding/Paging	Yes
	Dual Access	Yes
	One Touch/Speed Dial Locations	40/300
	Fax Compatibility	ITU-T Super G3
Print	Coding Method(s)	MH / MR / MMR / JBIG
	Auto Fax Receipt Date/Time Stamping	Yes
	Printing Method	Laser
	Print Speed (Max. ppm)	30ppm
	Print Resolution (Max. dpi)	Up to 1200 x 1200
	Duplex Printing	Yes
	Parallel & High-Speed USB 2.0 Interfaces*	Yes
	Ethernet Interface*	Yes
	802.11b/g Wireless Interface	Yes
	Windows® Compatibility²	98/98SE, Me, 2000, NT® 4.0, XP
	Emulation(s)	PCL6, BR-Script 3 (PostScript®3 Compatible)
	Mac® Compatibility	OS 9.1-9.2, OSX 10.2.4 or greater
Copy	Copy Speed (Max. cpm)	30cpm
	Duplex Copying	Yes
	Copy Resolution (Max. dpi)	Up to 1200 x 600 dpi
	Sorting Function	Yes
	Reduction/Enlargement	25% – 400% – 1% increments
Scan	Scanning (Color & B&W)	Flatbed
	Duplex Scanning	Yes
	Scanning Profile Presets	Yes
	Optical Resolution (Max. dpi)	600 x 2400
	Interpolated Resolution (Max. dpi)	19200 x 19200
	Document Viewer & OCR Software	ScanSoft® PaperPort® SE with OCR Presto!® PageManager® with OCR for Mac®
	PC Fax Software	Yes
Other	Maximum Printer Memory¹	544 MB
	Consumable Type (Max. Yield)	TN-550 (approx. 3,500 pgs.)¹ TN-580 (approx. 7,000 pgs.)¹* DR-520 replacement drum unit²
	Unit Dimensions (W" x D" x H")	20.9 x 17.7 x 18.7
	Carton Dimensions (W" x D" x H")	24.8 x 22.4 x 22.8
	Unit Weight (lb.)	36.8
	Carton Weight (lb.)	49.5
	UPC Code	0 12502 61510 1

Minimum System Requirements and Supported PC Software Functions							
Computer Platform & Operating System Version	Supported PC Software Functions	PC Interface	Processor Minimum Speed	Minimum RAM	Recommended RAM	Available Hard Disk Space	
						for Drivers	for Applications
Windows® Operating Systems	98, 98SE	Parallel, USB, Ethernet, Wireless 802.11b/g	Intel® Pentium®II or equivalent	32MB	128MB	90MB	130MB
	Me	Parallel, USB, Ethernet, Wireless 802.11b/g					
	NT® Workstation 4.0	Parallel, USB, Ethernet, Wireless 802.11b/g		64MB	256MB		
	2000 Professional	Parallel, USB, Ethernet, Wireless 802.11b/g		128MB	256MB		
	XP Home¹ XP Professional¹	Parallel, USB, Ethernet, Wireless 802.11b/g	AMD Opteron™ AMD Athlon™ 64 Intel® Xeon™ with Intel® EM64T	256MB	512MB	150MB	220MB
	XP Professional x64 Edition¹	Parallel, USB, Ethernet, Wireless 802.11b/g					
Apple® Macintosh® Operating System	OS 9.1-9.2	Printing, PC Fax Send, Scanning²	All base models meet minimum requirements.		64MB	80MB	200MB
	OS X 10.2.4 or greater	Printing, PC Fax Send, Scanning²		128MB	160MB		

¹For WIA, 1200x1200 resolution. Brother Scanner Utility enables to enhance up to 19200 x 19200 dpi.
²Dedicated "Scan to" key functions only in the Mac OS® X 10.2.4 or greater.
³Network PC Fax Receive not supported in Windows NT® 4.0.
⁴Network Scanning not supported in Windows NT® Workstation 4.0 and Mac OS® 9.1-9.2.
⁵A wireless network connection is supported only between the Brother device and an access point for PCs running Windows NT® Workstation 4.0 and XP Professional x64 Edition (Ad-hoc connection is not supported).
⁶Third party USB ports are not supported.

For the latest driver updates, access the Brother Solutions Center at <http://solutions.brother.com>

Optional Supplies and Accessories†

TN-550: Approx. 3,500 pages at 5% coverage*
TN-580: Approx. 7,000 pages at 5% coverage*
DR-520: Approx. 25,000 page replacement drum*
LT-5300: 250-sheet lower paper tray

¹ Requires additional purchase
*Based on 5% letter size page coverage
• Cables not included
• Duplex scanning through ADF – letter size maximum

¹ Using Brother No. 1 Chart with JBIG coding and standard resolution
² Drum life may vary based on various types of use
³ See system requirements



For more information please visit our Web site at www.brother.com

At your side.
brother®

www.brother.com