

Configure the wireless settings

- 1 Make sure the printer power switch is on.
- 2 Turn on your computer. (You must be logged on with Administrator rights.)
- 3 Put the supplied CD-ROM into your CD-ROM drive. The opening screen will appear automatically. Choose your printer model and the language.

NOTE

If the opening screen does not appear, use Windows® Explorer to run the start.exe program from the root folder of the Brother CD-ROM.

- 4 Click Install Printer Driver on the menu screen.



NOTE

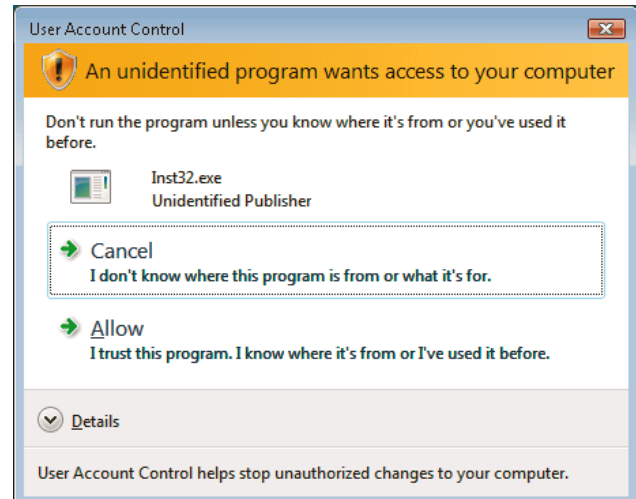
Choose the Install Printer Driver icon for your region.

- 5 Click Wireless Network users.



NOTE

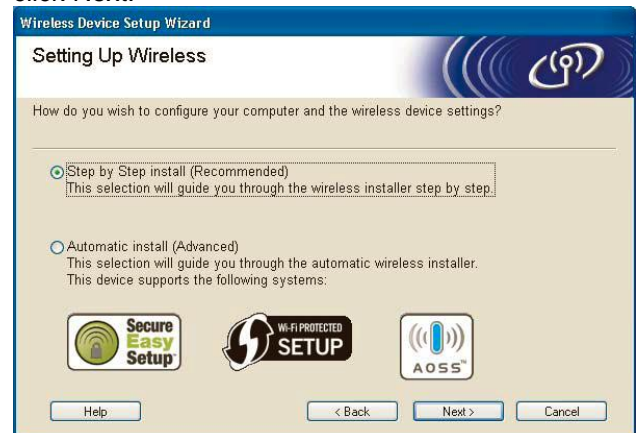
For Windows Vista™, when the User Account Control screen appears, click Allow.



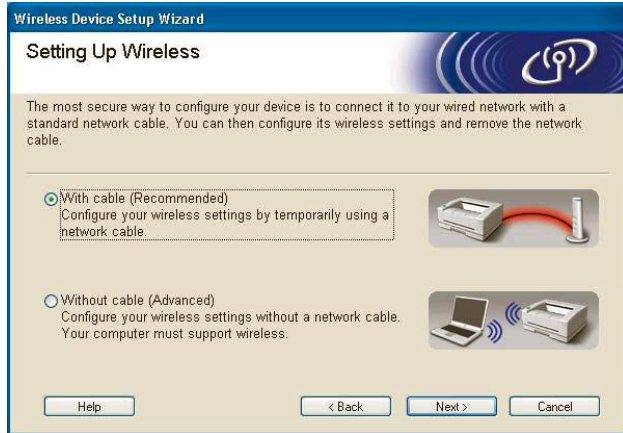
- 6 Choose Wireless Setup and Driver Install (Recommended), and then click Next.



- 7 Choose Step by Step install (Recommended) and then click Next.



8 Choose With cable (Recommended) and then click Next.



9 For configuration, you must temporarily connect your Brother wireless device (your printer) directly to a free port on your access point, hub or router using a network cable. When the following screen appears, insert the network cable to the access point and then to the printer. Click Next.

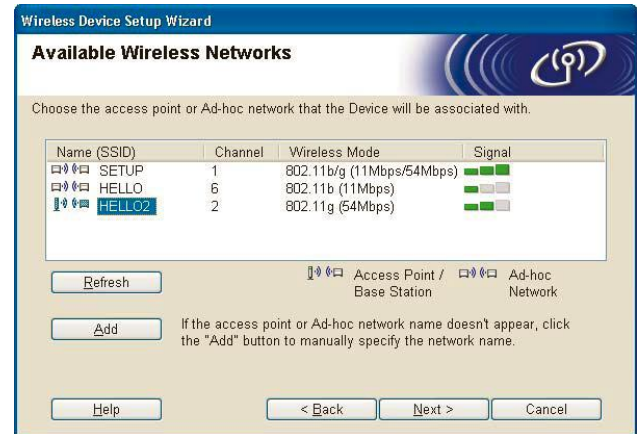


10 Choose the printer you wish to configure, and click Next. If the list is blank, check if the access point and the printer are powered on, and then click Refresh.



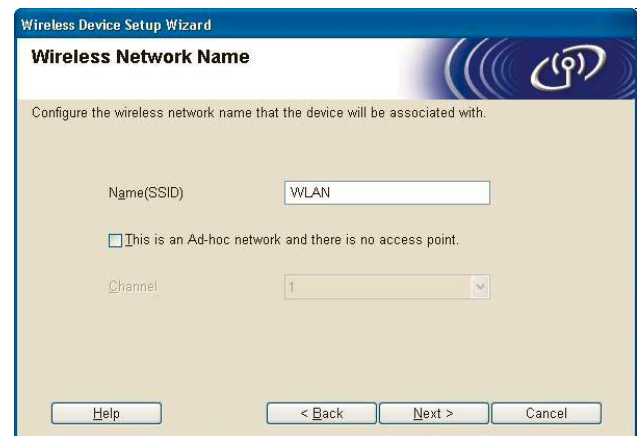
NOTE
The default Node name is "BRNxxxxxxxxxxxx".

11 The wizard will search for wireless networks available from your printer. Choose the access point you wish to associate the printer with, and then click Next.



NOTE

- "SETUP" is the default SSID of the printer. Do not choose this SSID.
- If the list is blank, check that the access point has power and is broadcasting the SSID, and then see if the printer and the access point are within range for wireless communication. Then, click Refresh.
- If your access point is set to not broadcast the SSID you can manually add it by clicking the Add button. Follow the on-screen instructions for entering the Name (SSID), and then click Next.



12 If your network is not configured for Authentication and Encryption, the following screen will appear. To continue configuration, click OK.



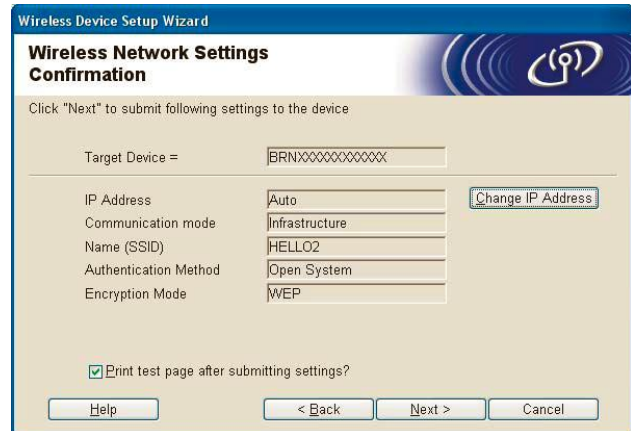
13 If your network is configured for Authentication and Encryption, the following screen will appear. When configuring your Brother wireless printer, you must ensure that it is configured to match the Authentication and Encryption settings of your existing wireless network. Choose the Authentication Method and Encryption Mode from the pull-downs in each setting box. Then enter the Network key and Confirm Network Key, and then click Next.



NOTE

- If you want to setup more than WEP key1, click Advanced.
- If you do not know the Authentication or Encryption settings for your network, contact your network administrator.
- If the Authentication Method is set to Open System and the Encryption Mode is set to WEP, an error indication will NOT appear if the Network key is incorrect.

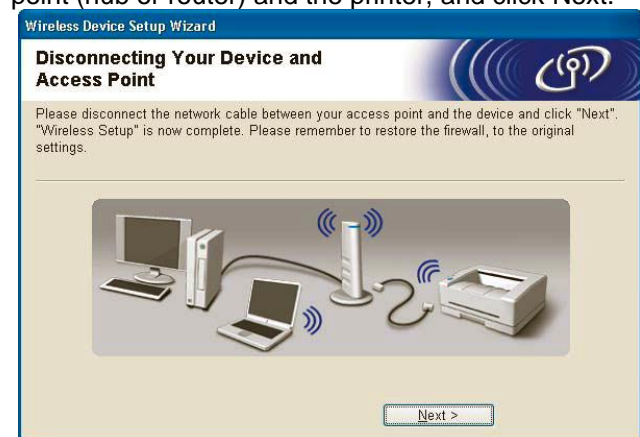
14 Click Next. The settings will be sent to your printer. The settings will remain unchanged if you click Cancel.



NOTE

If you want to manually enter the IP address settings of your printer, click Change IP Address and enter the necessary IP address settings for your network.

15 Disconnect the network cable between your access point (hub or router) and the printer, and click Next.

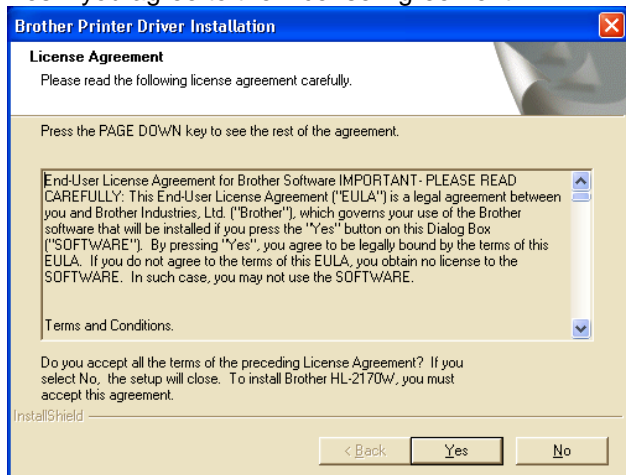


Installing the printer driver

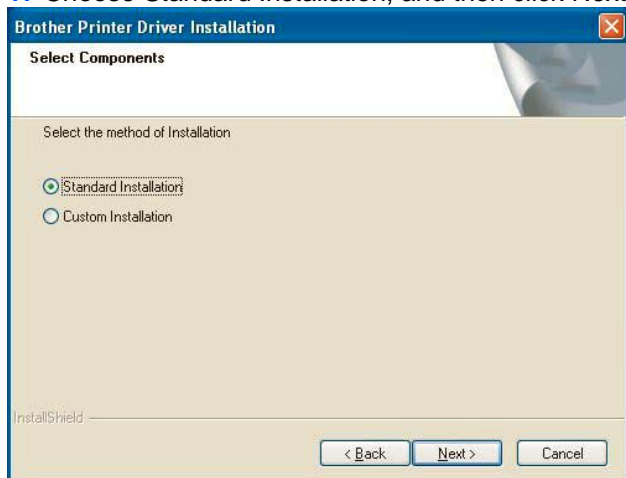
Improper Setup

- DO NOT try to cancel any of the screens during this installation.
- If your wireless settings fail, an error message will appear during the installation of the printer driver and the installation will be terminated. If you encounter this failure, please go back to step 4 and setup the wireless connection again.

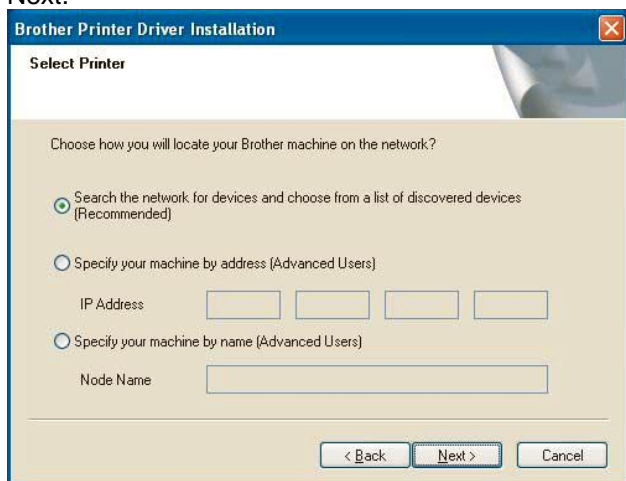
16 When the License Agreement window appears, click **Yes** if you agree to the License Agreement.



17 Choose **Standard Installation**, and then click **Next**.



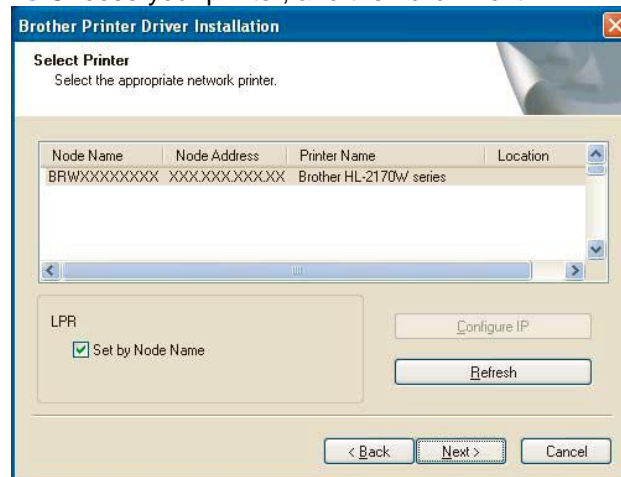
18 Choose **Search the network for devices** and choose from a list of discovered devices (**Recommended**). Or enter your printer's IP address or its node name. Click **Next**.



NOTE

You can find your printer's IP address and the node name by printing out the Printer Settings Page.

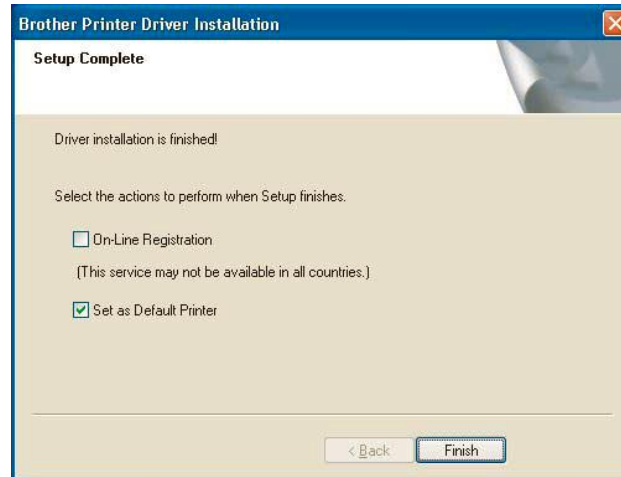
19 Choose your printer, and then click **Next**.



NOTE

If your printer takes a long time to appear on the list, 1 minute or more, then click **Refresh**. If your printer still fails to appear, reset the print server back to the default factory settings and go back to step 4 and try the wireless setup again.

20 Click **Finish**.



NOTE

- If you want to register your product on-line, check **On-Line Registration**.
- If you do not want to set your printer as **Default printer**, uncheck **Set as Default Printer**.
- Turn your **Personal Firewall** back on. Setup is now complete.

YOU CAN NOW CLOSE THIS WINDOW AND RETURN TO THE WIRELESS PRINTING ASSISTANT