

Kacia Hosmer

Are you ready for this? I have a new favorite project to share with you all: this magnetic quilted tic-tac-toe board! (I know, just about every new project becomes my new favorite. Either I just change my mind a lot, or it's like my own "good job!" pat on the back. Oh well. I digress.) But really - I love this thing!

This project combines a few different materials that are cut out on the ScanNCut machine. It's a great "beginner quilting project" to tackle as well! There's not a ton of piecing - and the ScanNCut marks your seam allowances for you, anyway! Let's jump right in.

MATERIALS:

ScanNCut Machine; Standard Mat and Fabric Support Sheet; Pen Holder and Fabric Pen; Standard Blade and Carriage; Quilting Cotton Poly Felt; Quilt Batting; 9-10 Magnets (I used 1/4" x 1/16"); Pieces: 1.5" in diameter for both "O"s and "X"s; Board Squares: 2.8" each; Curved Corner: 8.5" x 8.5"; Rectangle: 5" x 7"; Triangles: 5.58" x 5.58"; Sewing Machine; Thread. (Be sure to check out the Iron-On Adhesive Pattern Download at the end of this post!)

step 1.

Begin by prepping your materials. Place your Fabric Support Sheet on the Standard Mat. Trim your fabrics down to a size that fits on the mat. Place the Fabric Support Sheet onto the mat (glossy side down). Remove the protective blue sheet when you are ready to use.

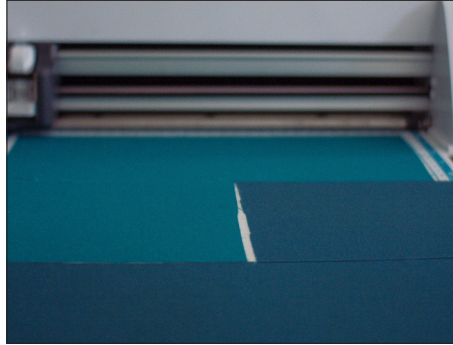


step 2.



We will begin by marking seam allowances.

step 3. Place fabrics on the mat. Use the “Background Scan” function to see exactly where the fabrics are placed.



step 4. Arrange the tic-tac-toe squares on the screen, using the “Background Scan” image as your guide.



step 5. Begin first by marking seam allowances. Next, cut out your fabrics.



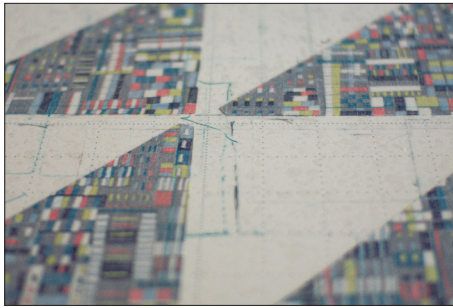
My Settings

Blade depth: 3.5

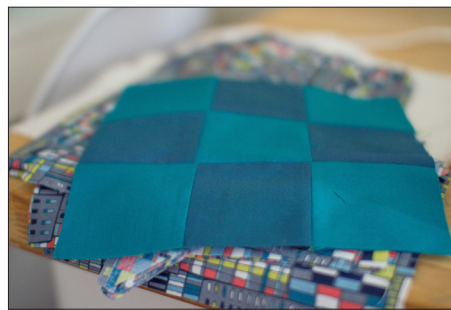
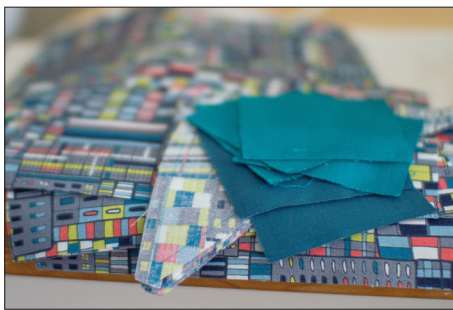
Blade pressure: 5

Blade speed: 1

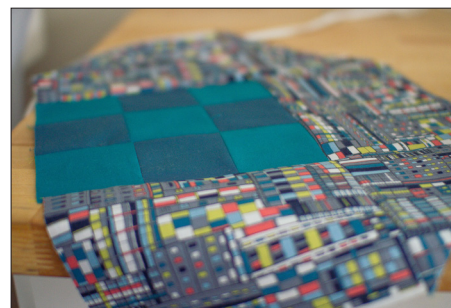
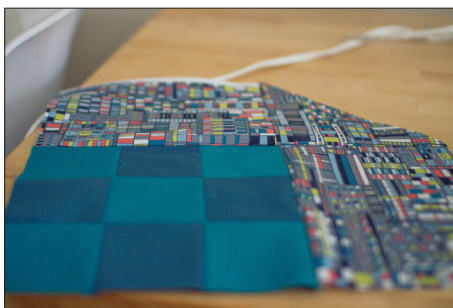
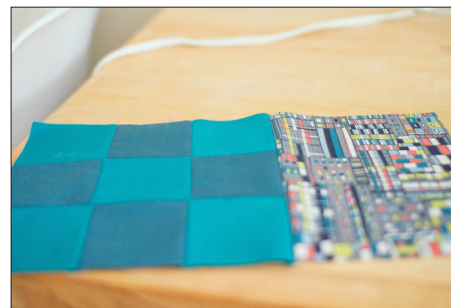
step 6. Continue with the perimeter fabric pieces of the board.



step 7. Begin piecing your quilt. Start with the tic-tac-toe grid by piecing in strips (three across). Then sew the strips together. You can either press seams to the side or make open.



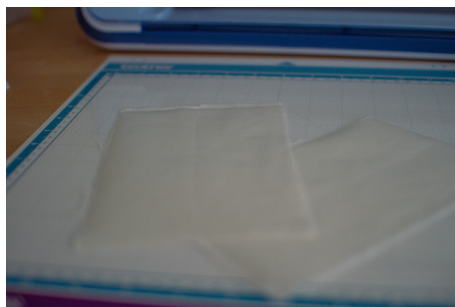
step 8. When you've finished piecing the top, you will then attach the magnets that you will pocket inside.



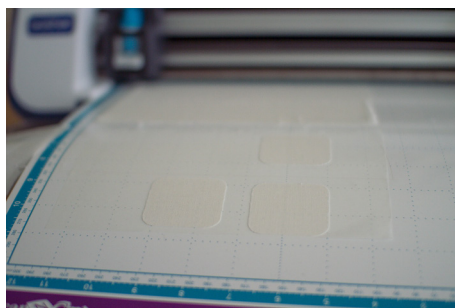
- step 9.** Cut a piece of quilt batting that is the same size as your tic-tac-toe grid. Measure a grid matching your quilted grid.



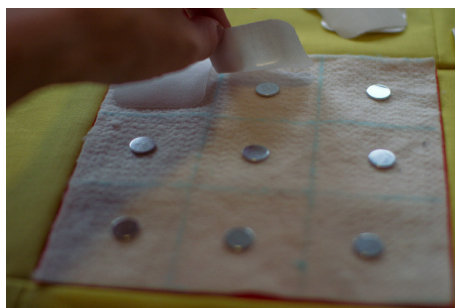
- step 10.** Using scrap quilting cotton, iron the Iron-on Adhesive to one side. Cut out the magnet squares from the pattern download. (I used the Standard Mat with the Iron-On Adhesive placed down. I also used the same settings that were used for the quilting cotton.)



- step 11.** Place the magnets in the center of each tile.



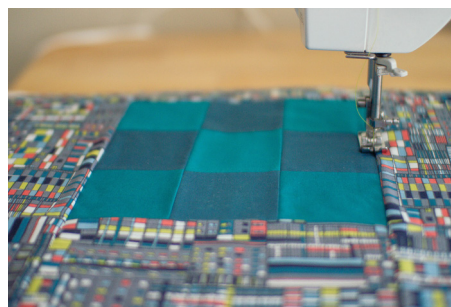
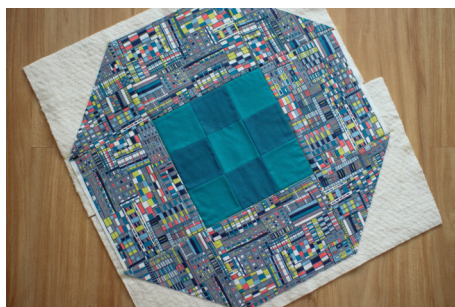
step 12. Iron the magnet squares over the top of each magnet to hold in place.



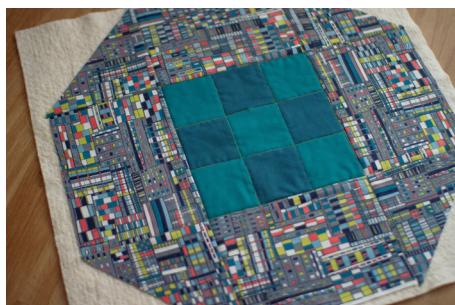
step 13. Place the magnet grid batting-side up under your quilt. Place another, larger piece of batting under it. Complete the quilt sandwich with a large piece of quilting cotton at the bottom.



step 14. Quilt the sandwich using your sewing machine. (If you have a Walking Foot, use it!)



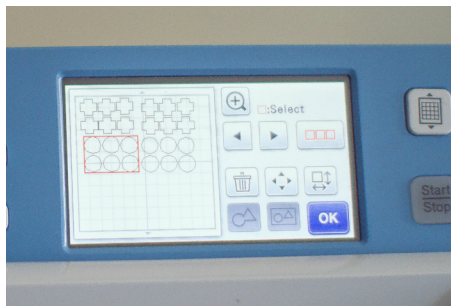
step 15. Now we will cut out our playing pieces from stiff poly felt.



- step 16.** Place the felt on your Standard Mat with the Fabric Support sheet in place. (Remember, if you have a lot of fuzzies and frays, use an alcohol-free and scent-free baby wipe to remove them to clean your mat.)



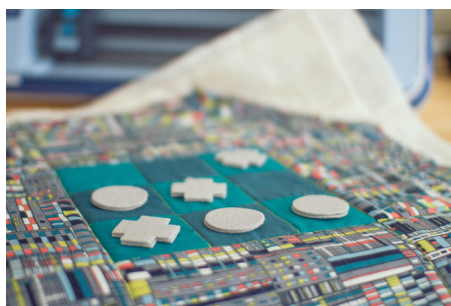
- step 17.** Use “Background Scan” for scanning your felt and then place the pattern pieces on it.



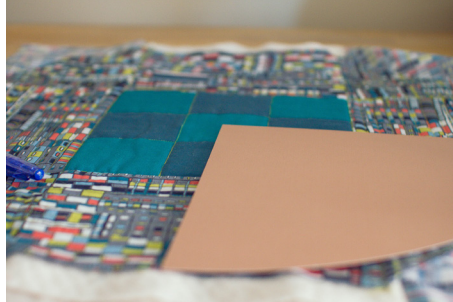
- step 18.** Change your settings, sit back, and let your ScanNCut do the work! “Cut” Settings: Blade Depth: “8”; Blade Pressure: “9”; Blade Speed: “1”.



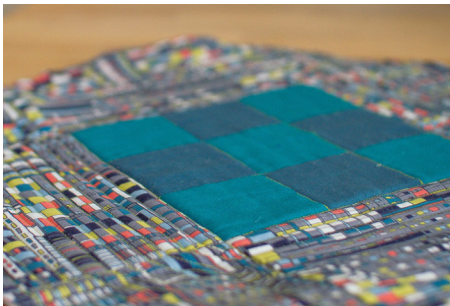
- step 19.** Sandwich a small magnet between the two layers and sew the perimeter.



step 20. Next, take the circular template and cut from a piece of cardstock or large paper. Using the template, measure and mark the center on your quilt and also mark the circular perimeter. Cut and discard scraps.



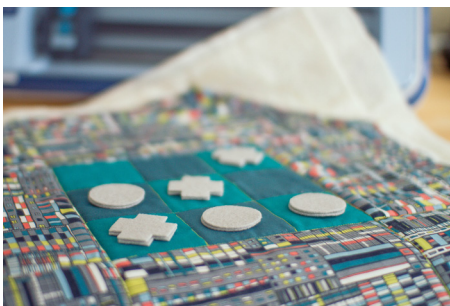
step 21. Now we'll add the binding!



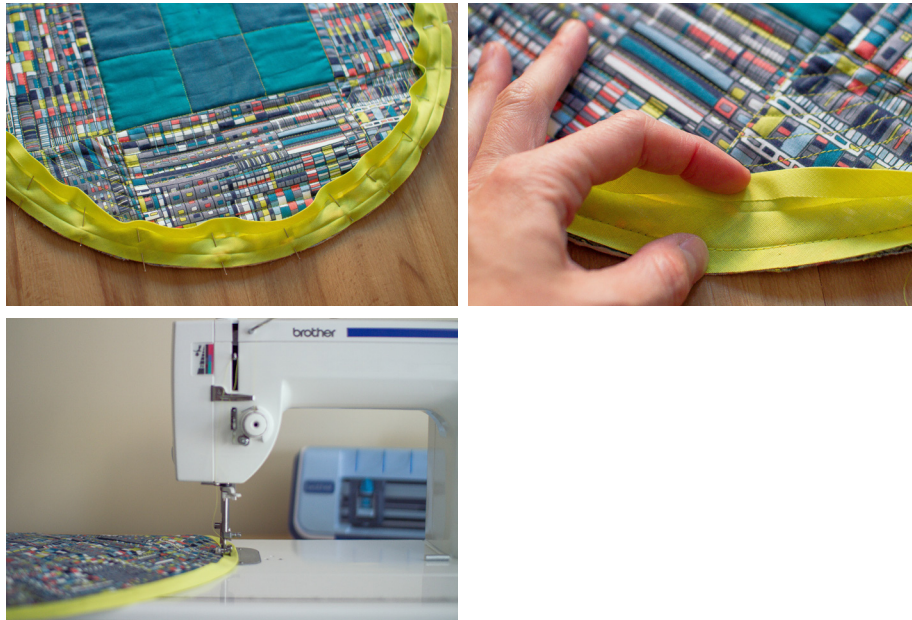
step 22. Bias tape is a great way to bind curved edges! You can see in more detail how to bind using bias tape here.



step 23. Sandwich a small magnet between the two layers and sew the perimeter.



step 23. Attach a large hair elastic at the edge. To roll game, fold in two sides and roll towards the elastic. Use the elastic to keep game rolled up.



step 24. Go play tic-tac-toe!



