


[HOME](#)
[ABOUT US](#)
[ARTICLES](#)
[NEWS](#)
[PROJECTS](#)
[TIPS & TRICKS](#)

Accessory Spotlight August Recipe for T-shirts

August 28, 2020 | By Joanne Banko | Accessories, Accessory, Appliqué, Fashion, Fonts, Quick Tip, Sewing, Tips & Tricks, Tutorial | No Comments

Opinion by Paid Consultant



T-shirt embroidery is an ever-popular topic! In fact, one of my August Stitching Sewcial posts features an embroidered T-shirt along with some links to additional T-shirt embroidery tips. I remembered yet another feature after my shirt was finished so I thought it would be helpful to share it with you. This tutorial features the **Brother BES4 Dream Edition** Lettering and Customization program. The software version shown in these instructions includes **SABES4UG1 Power Pack 1**, and **SABES4UG3 Power Pack 3** Store this tutorial in your

Type and press enter

Tags

[#StitchingSewcial](#)
[4x4 hoop](#)
[Angela Wolf](#)
[Applique](#)
[Bobbin Thread](#)
[brother at your side](#)
[Brother Blog](#)
[Brother Embroidery](#)
[Brother Embroidery Machine](#)
[Brother Quilts](#)
[Brother Sewing Machine](#)
[Brother Sews](#)
[design](#)
[Disney](#)
[DIY](#)
[Embroidery](#)
[embroidery thread](#)
[Emily Thompson](#)

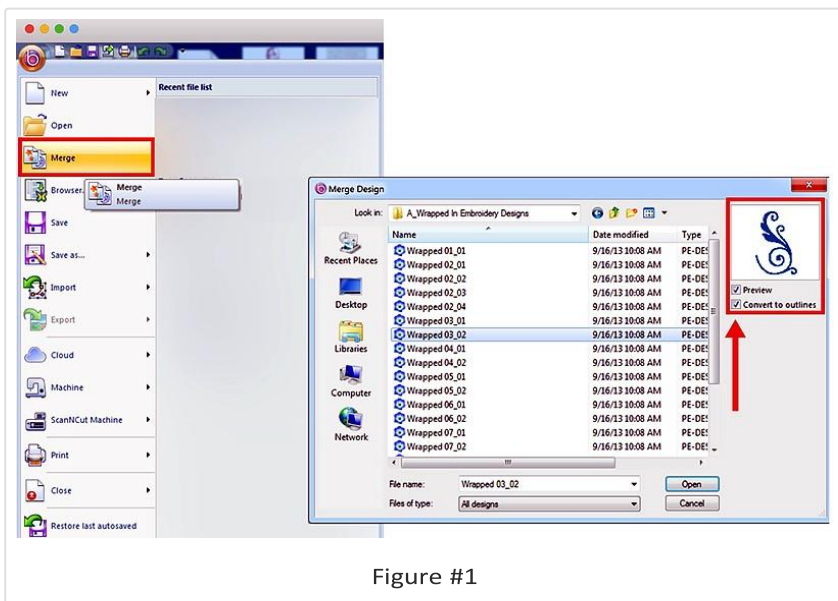
embroidery help le so you can make use of it when it’s time to embroider on T-shirts.

The two samples you see in the above photo use lettering and designs built-in to the software. Each one was stitched on T-shirt knit backed with medium weight fusible cut-away stabilizer. In addition, I oated a layer of medium weight tear away under the hoop and nally added a layer of water-soluble lm on top. Everything but the cut-away fusible was removed after stitching.

Look closely at the photo and you may notice that the lettering on the left sample is slightly more pronounced. Choosing a “recipe” in the BES software automatically adjusted the stitches to ll in nicely on the fabric. This option gives you the opportunity to ne tune your design to suit the fabric. I recommend stitching a sample of each one, then decide what looks best for your design and your fabric. **Tip:** Use fabric remnants or save an old T-shirt to use for testing designs; be sure to chose one that has a fabric similar in weight and texture to your actual garment project.

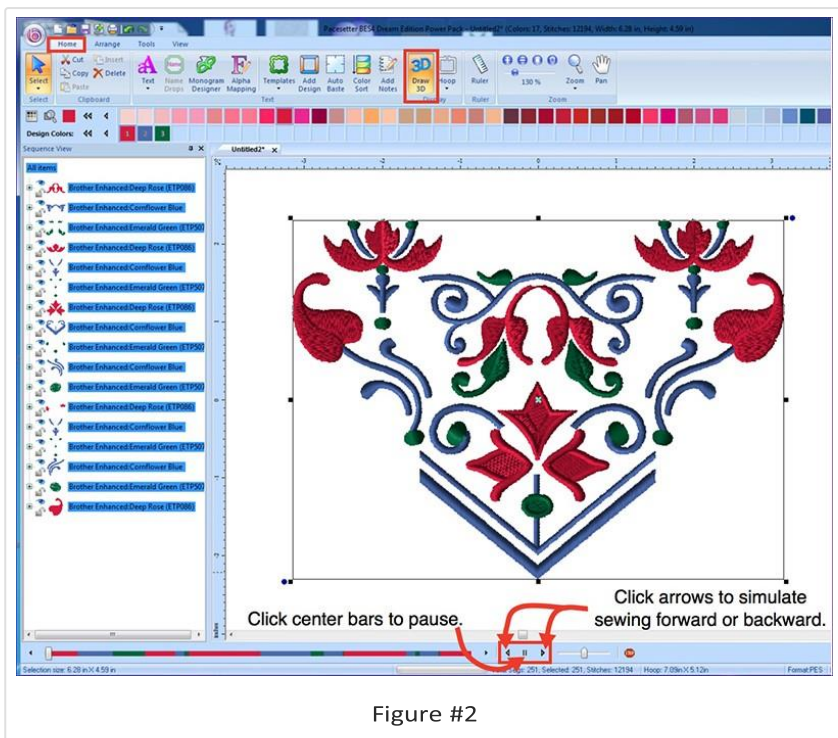
Note: You can also use recipes for designs that are merged into the software. Open software. Select New Page and click the “B” Pacesetter icon. Click on Merge and locate your design from your le locations. You will need to check the Convert to outlines box if you want to use the recipe feature. **See Figure #1.**

Fabric	
Foot of the Month	
Free Design	
Free Design of the month	
Gift	Holiday
Hoop	
iBroidery	
Joanne Banko	
Quick Tip	
Quilting	
Ribbon	
ScanNCut	
Serger	
Sew-a-long	
Sewing	
Software	
Stabilizer	
stitching	
Stitching Sewcial	
The Dream Fabric Frame	
THE Dream Machine	
THE Dream Machine® Innov-ís XV8500D	
Thread	
Tutorial	Video
XV8550D	



It's possible for some stitches to change in character when using this feature so be sure to preview realistic (3D) stitches on screen. Use the stitch simulator to preview stitches as they will sew out on your project.

See Figure #2.



Now let me show you how to use the software to select a recipe for a T-shirt knit. The process is the same if you merge in a design and select convert to outlines as described above, or if you start with a design or lettering built-in to the software.

Open the software and click to create a new design from the welcome screen. **See Figure #3a.**



Figure #3a

Begin building your design in the workspace. I used a template from Power Pack3 and modified the design by changing the lettering and eliminating the oral elements of the design. First, choose the hoop from the drop-down arrow, and then select the template option to choose a pre-made design combination.

See Figure #3b and Figure #3c.

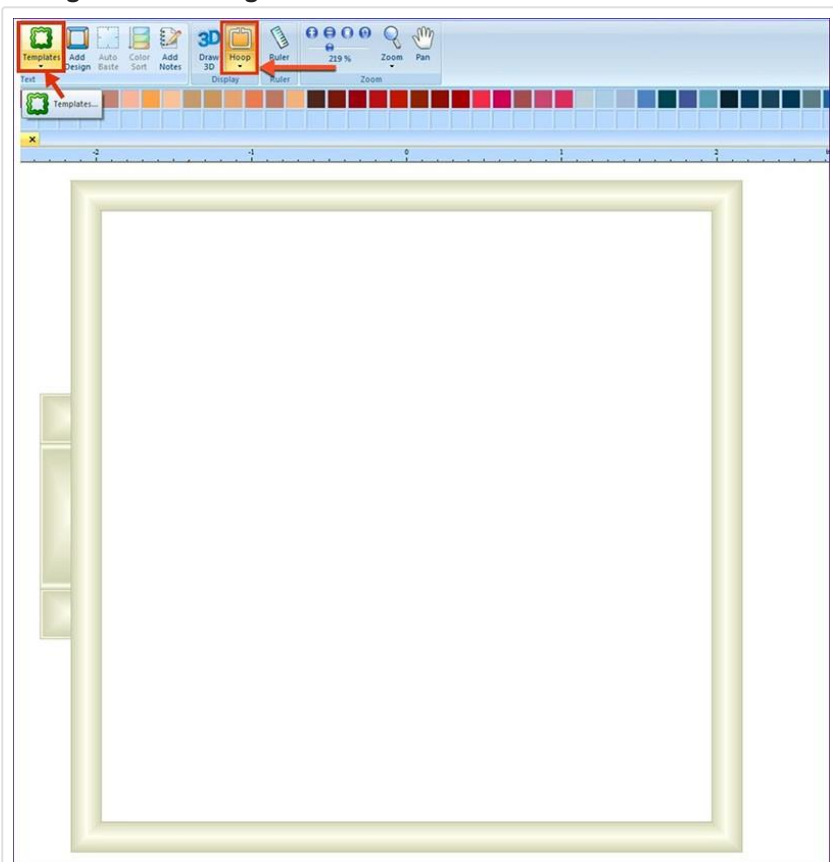


Figure #3b

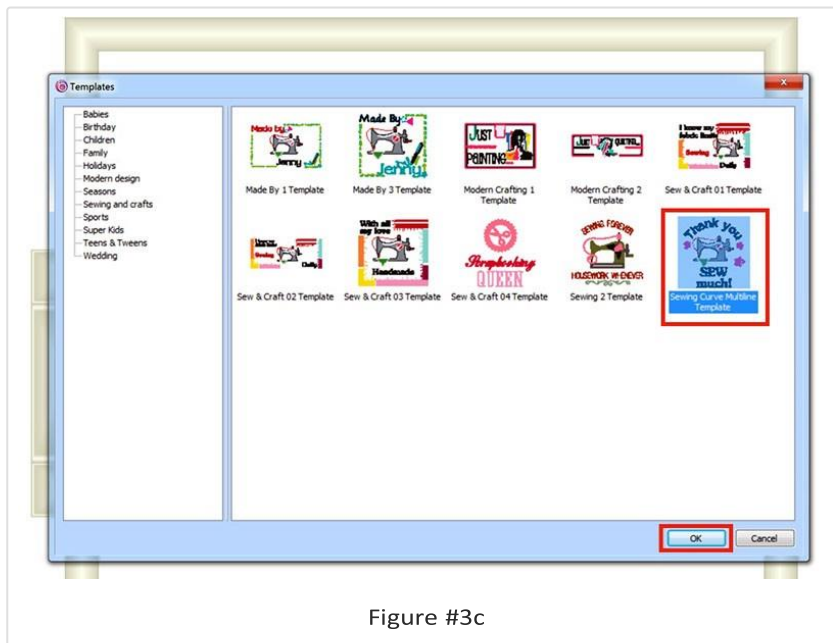


Figure #3c

In the text window, double click inside each lettering box and then change or delete words. I deleted the owners and changed colors in the design, once I said OK and brought it into the workspace. You can do this by selecting individual segments in the Sequence view. **See my steps in Figure #3d, Figure #3e, and Figure #3f.**

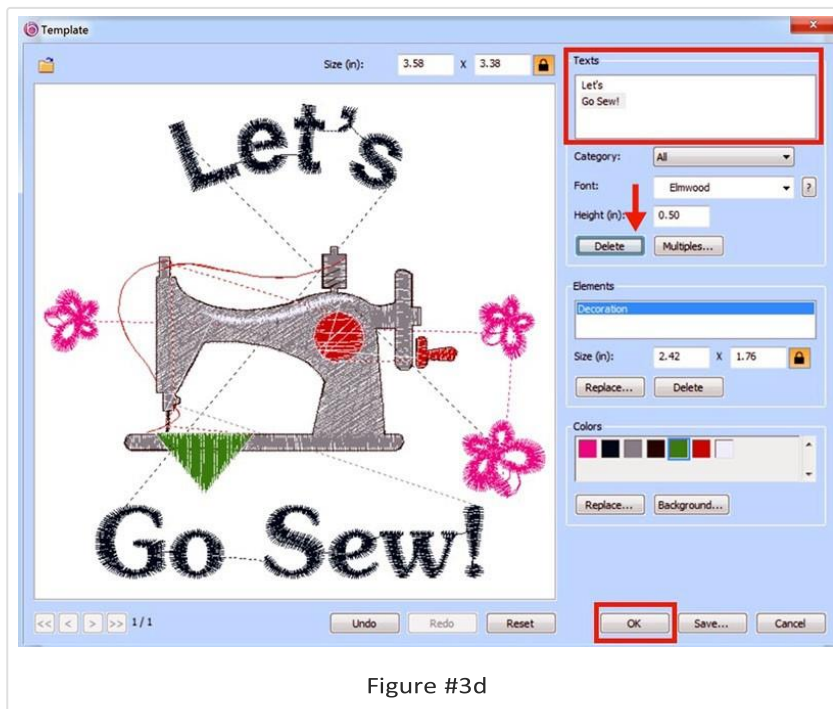


Figure #3d

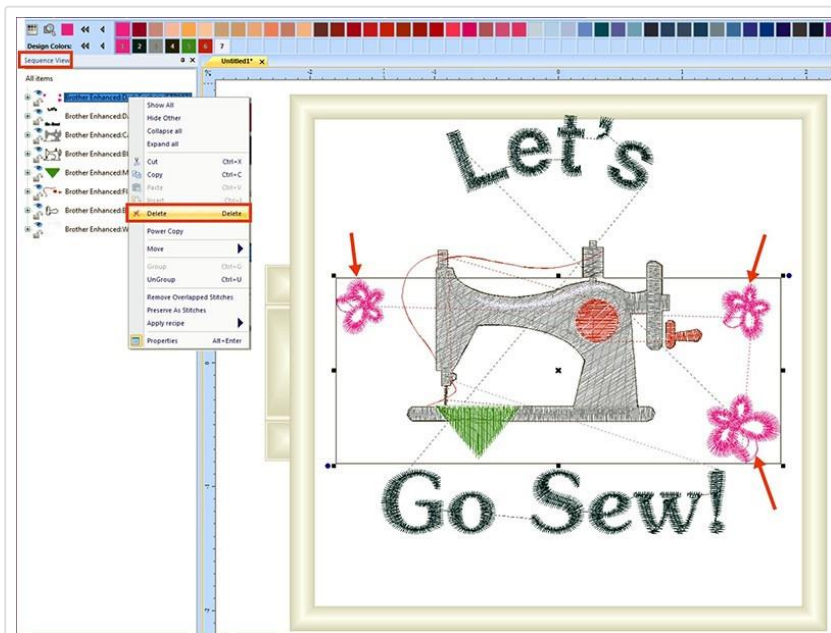


Figure #3e

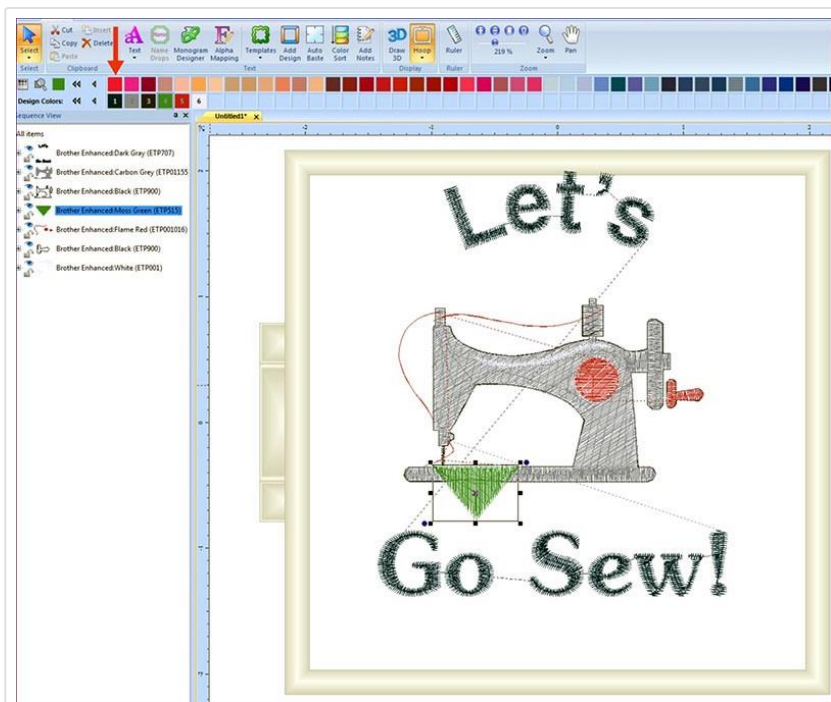


Figure #3f

Now it's time to add the recipe feature. Begin by clicking the Select tool, then click on the drop-down arrow and *Select All* to select the entire design. Click on *Arrange* and *Center* the design.

See Figure #4a.

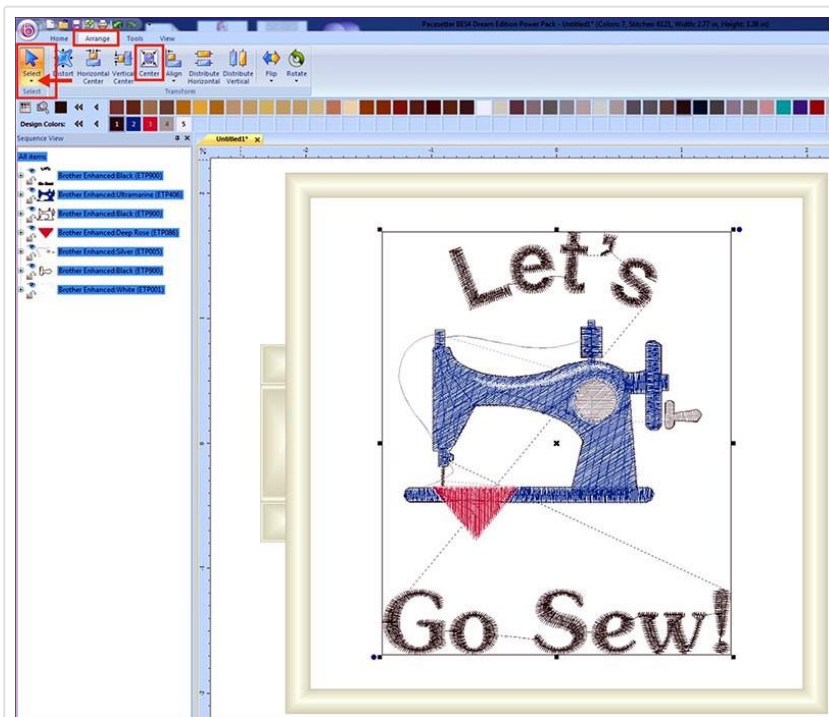


Figure #4a

Next, right click on the selected design to bring up a pop-up menu with the option to apply the recipe. Click on Apply Recipe.

Slide your cursor to highlight "T-shirt" and then click to apply.

See Figure #4b.

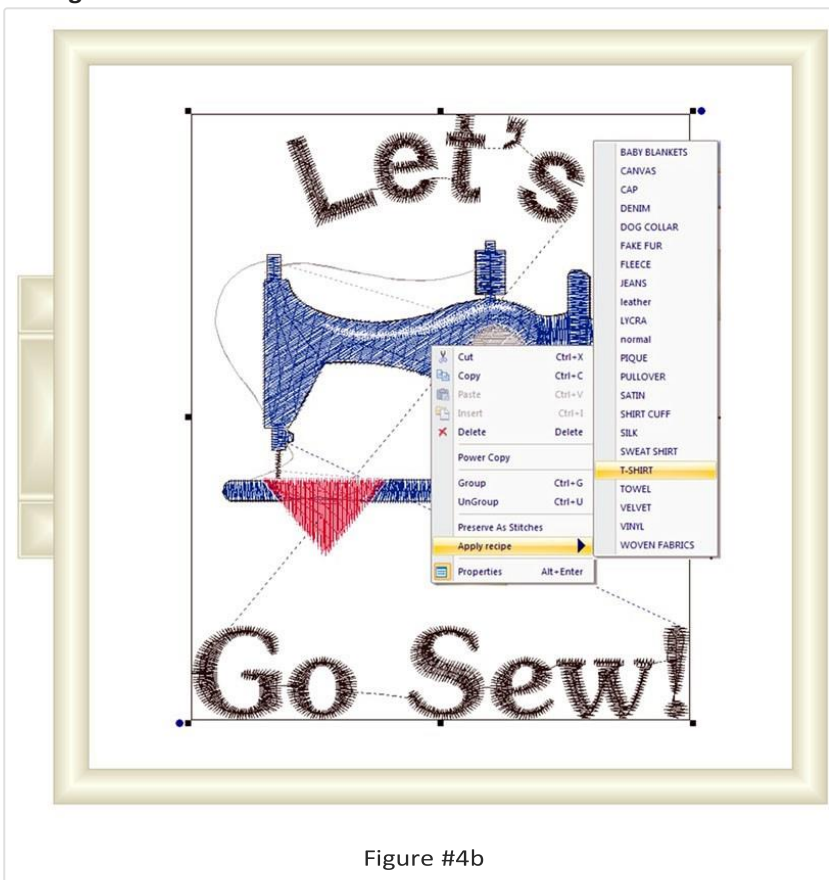


Figure #4b

If you look at a comparison of “before” the recipe and “after,” you’ll see that the stitch count changed, and the lettering is fuller. The software adjusted the stitches and applied settings for T-shirt knit fabric. Take a look for yourself in **Figure #5** below.

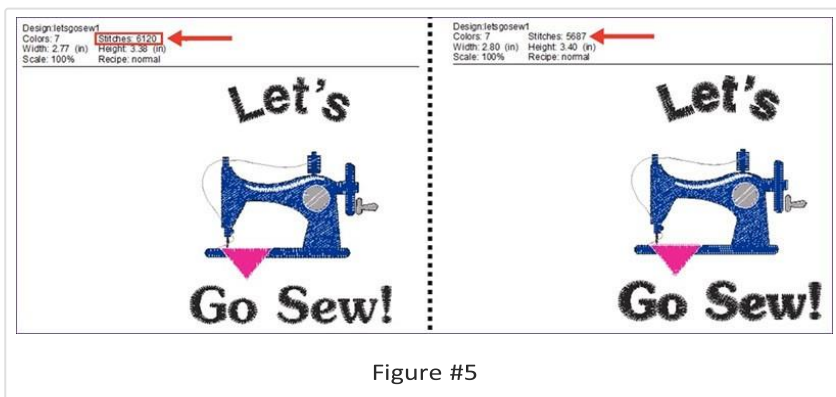


Figure #5

I hope you enjoyed learning how to use the recipe option.

Sewing is all about using our tools and accessories to the fullest.

I encourage you to try this feature!



Cube Zipper Case Video

Tutorial →