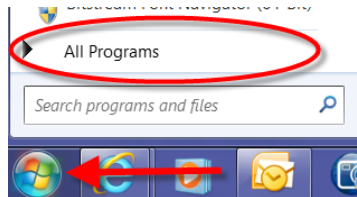
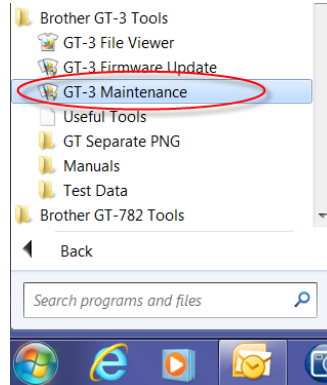


## Print Head Firing Adjustment (White)

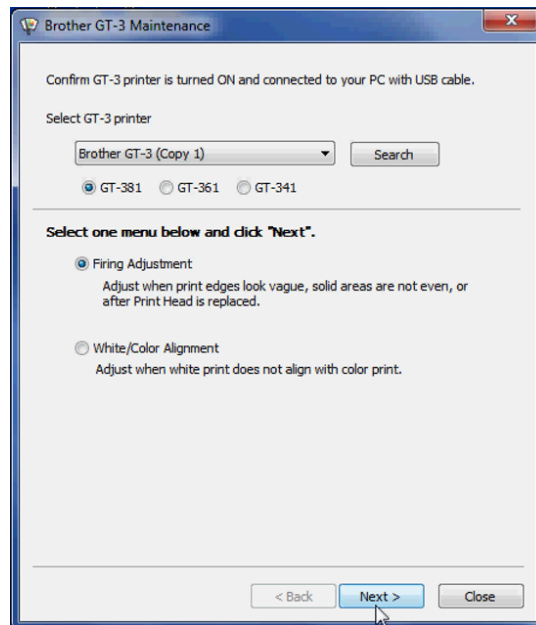
1. Click on PC start button. Select programs or all programs.



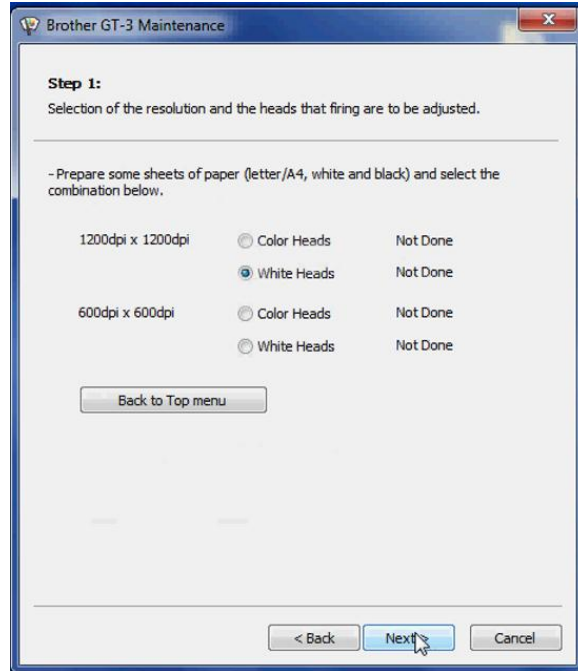
2. Select the Brother GT-3 Tools and click on GT- Maintenance.



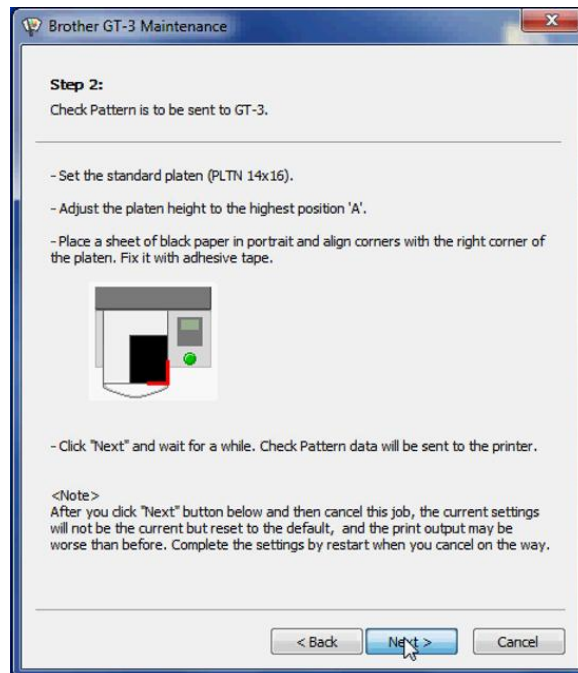
3. Select the correct GT model #. Under the GT-3 Maintenance menu, select firing adjustment then click next.



4. Select 1200x 1200dpi color heads and then click next.

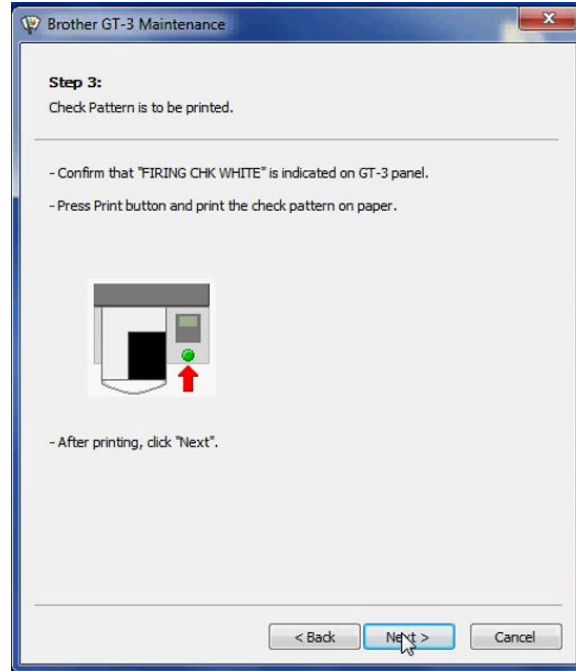


5. Follow instructions on the screen.



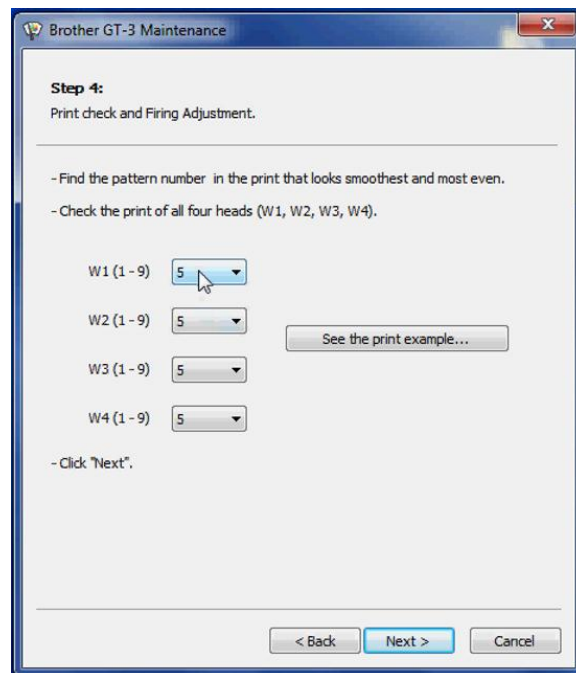
6. Click next.

7. Follow instructions on the screen.



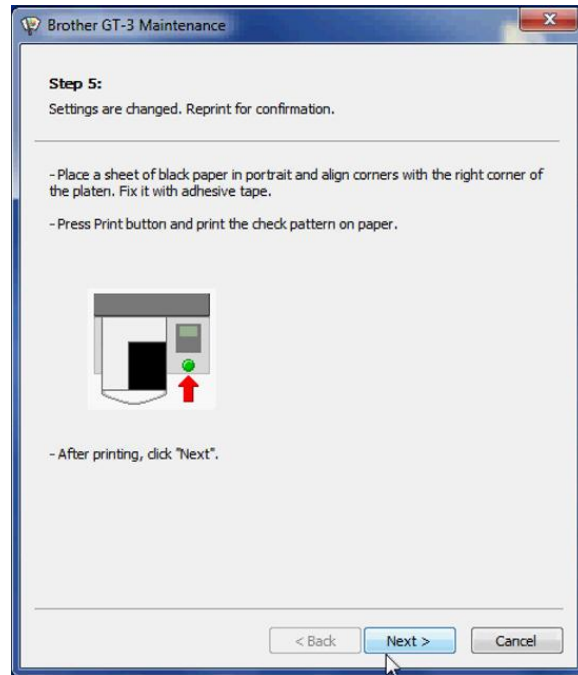
8. Press print button on the machine. After printing, click next.

9. Choose the "smoothest" pattern on each color, and check to make sure the lines are straight on the side.



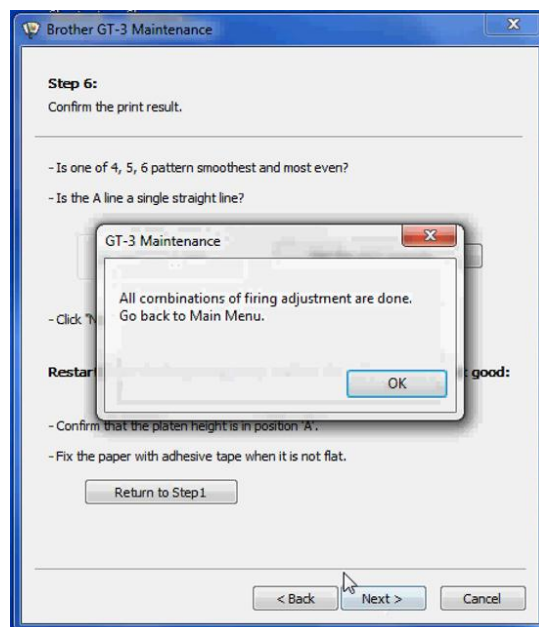
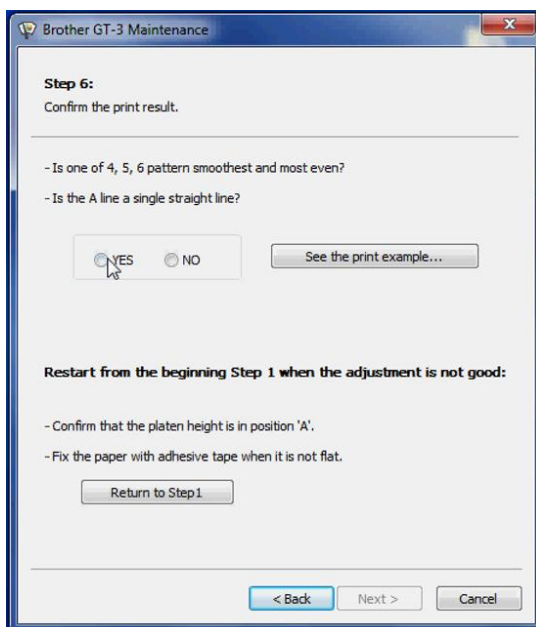
10. Click next.

11. Follow the instructions on the screen.

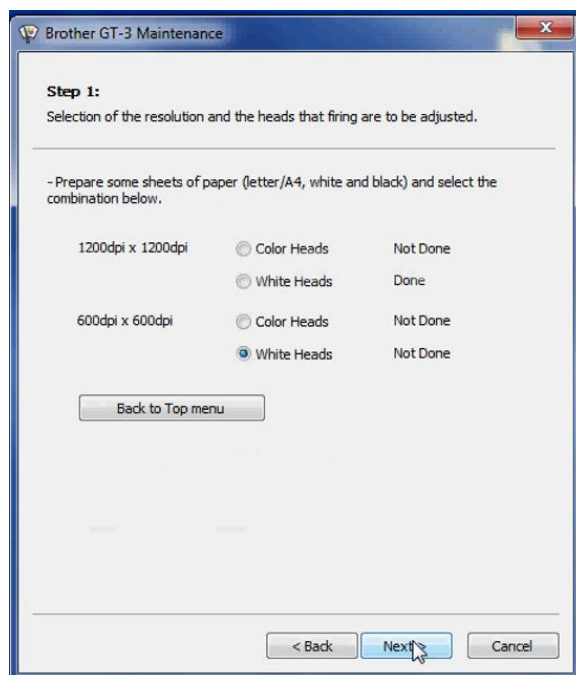


12. Press print on the machine. After printing, click next.

13. Follow the instructions on the screen. If one of the 4, 5, 6 patterns is the smoothest and the A line is straight click the Yes radio button. The button to click Next button will become active and lead you to the following screen.



14. Repeat the above steps for White 600.



---

***Your dealer(s)-distributor(s) are your first line of support, please contact them for prompt assistance. If you do not have a dealer(s)-distributor(s) refer to our website <http://www.brother-usa.com>. For additional information contact Technical Support at 1-877-427-6843 or [tsupport@brother.com](mailto:tsupport@brother.com). Any information within this document is subject to change.***

---