



GT-541 Garment Printer

For technical support please call **1-877-427-6843**

Email: tsupport@brother.com

Website: <http://www.brother-usa.com/garmentprinters>

Preparing Your GT-541 for Long-Term Storage

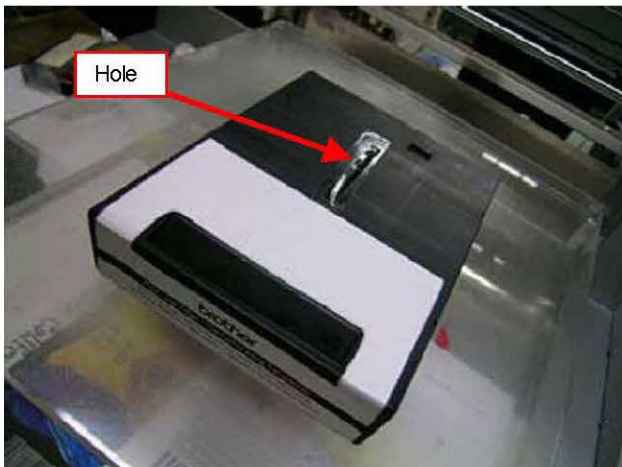
1) Before beginning, please make sure the following parts are available:

| Part name | Qty. |
|---------------------------------|------|
| Wiper Assembly (SA9001001) | 1 |
| Nozzle Protect Film (SA6292001) | 1 |
| Tube Joint 1 (SA5904001) | 4 |
| Tube Joint 2 (SA5905001) | 4 |
| Cleaning Cartridges (SA5718101) | 4 |

If you do not already have a syringe kit (part# GT5SESKIT) you can order one from Brother at 877-850-7179.

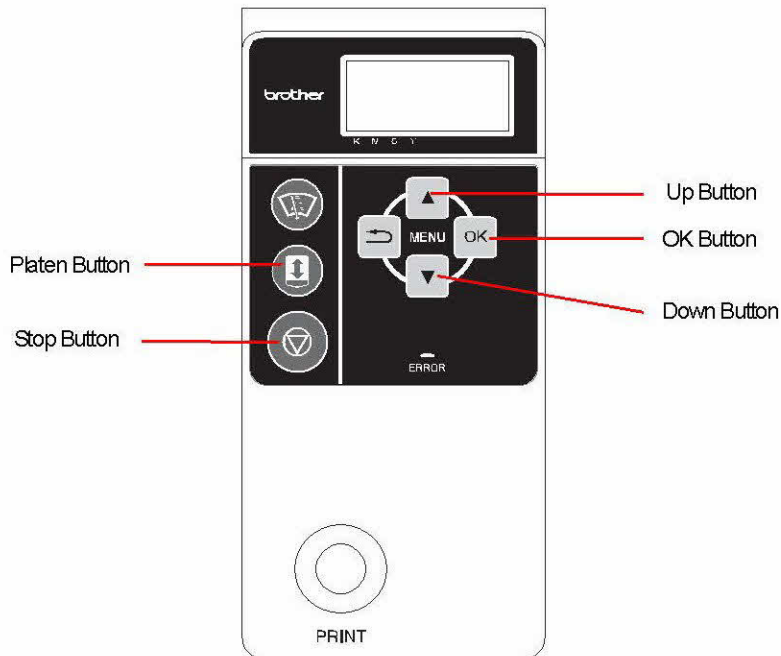
2) Drain the Ink Tubes

a. Seal the hole on a filter cartridge as shown below.



b. Make sure the waste ink tray is not near full. If it is, you will need to have a new waste ink cartridge available before you take the machine out of storage.

- c. On the control panel, press the platen button to eject the platen if it is not already.



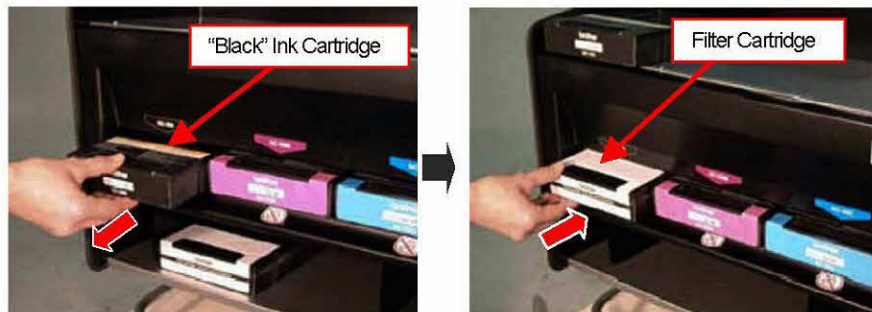
- d. Press the OK Button to display the menu display.
- e. Press the Up/Down Button until "Version" appears.
- f. While holding down both the Up and Down buttons, press the Stop button. This will display the Advanced Menu.



- g. Press the Up/Down button to select "Tube Cleaning" then press OK.



- h. Remove the black ink cartridge and replace it with the filter cartridge with tape over the hole.



- i. Press the Up/Down button to select black, then press OK.



- j. The following screen will display. Wait until the cleaning finishes.



- k. When the tube cleaning is finished, remove the filter cartridge and replace it with a cleaning cartridge.



- I. The following message should be displayed on the screen. Make sure black is highlighted and press OK. The tube cleaning will continue. Wait until the cleaning finishes.



- m. When the cleaning is finished, remove the cleaning cartridge and replace it with the filter cartridge with tape over the hole. Then, run the tube cleaning for black again. Wait for the cleaning to finish.
- n. When the tube cleaning has finished, remove the filter cartridge and replace it with the cleaning cartridge.
- o. Run the tube cleaning once again on black, and this will run fresh cleaning solution through the line. At this point your tube should be relatively clean with clear solution through the line. The solution will be left in the line during storage.
- p. Leave the cleaning cartridge in the ink slot during storage.
- q. Repeat section 2) Drain the Ink Tubes for the other three colors. When finished, you should have clear solution in all 4 ink tubes and all 4 cleaning cartridges inserted in the ink cartridge slots.

