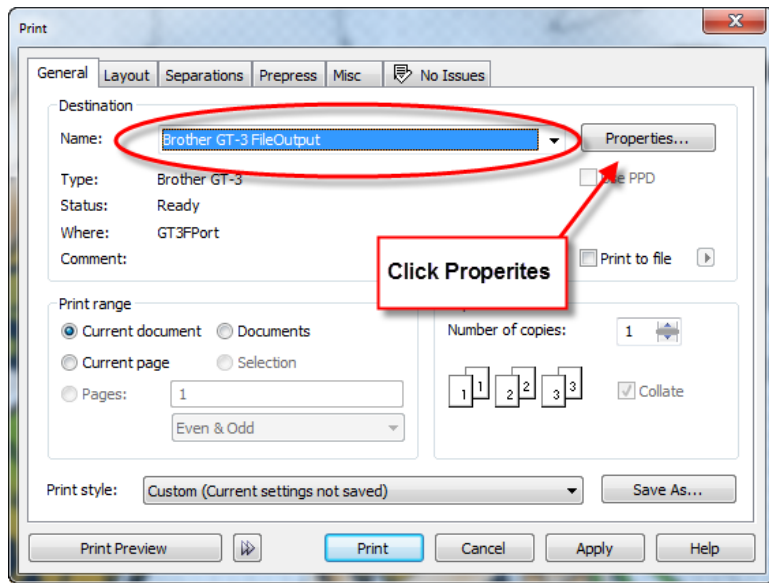
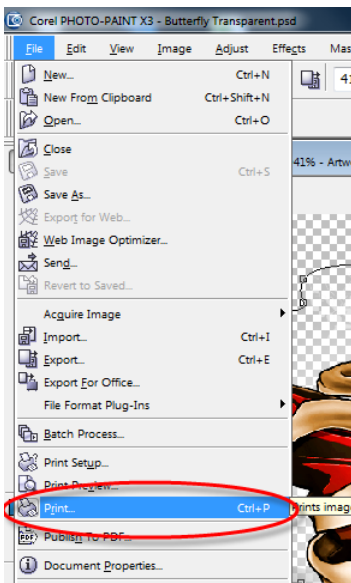
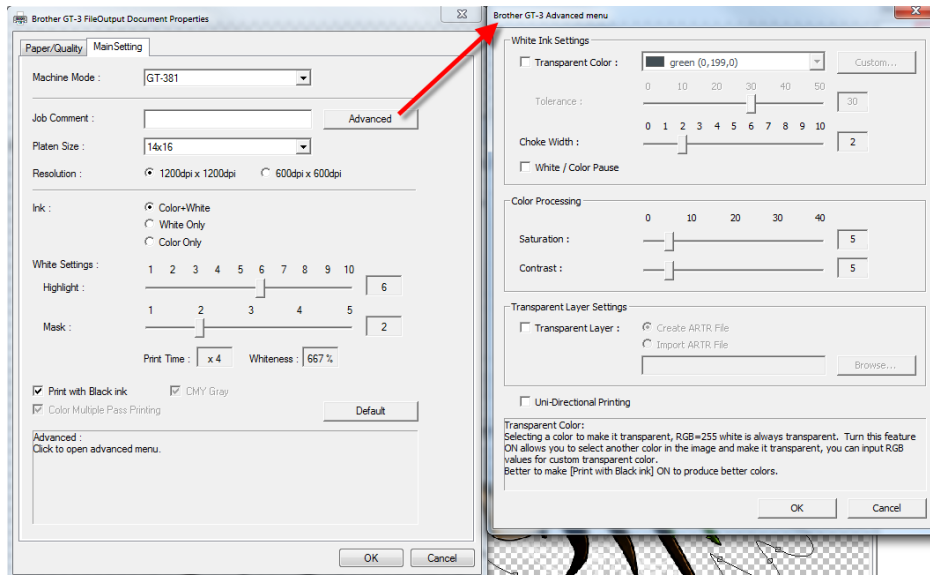


How to Create an AR3

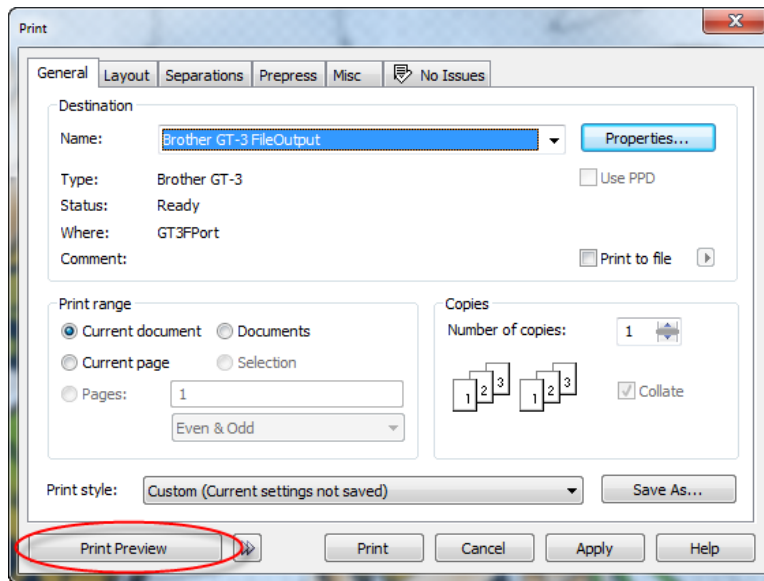
1. Open your graphics program of your choice (Photoshop, Corel PhotoPaint, etc).
2. Go to the File menu and select open.
3. Select the file you want to open in the program.
4. Make any changes you want to the image then go to the File menu and choose Print. Under destination choose Brother GT-3 FileOutput. Click on Properties to access the Brother Print Driver.



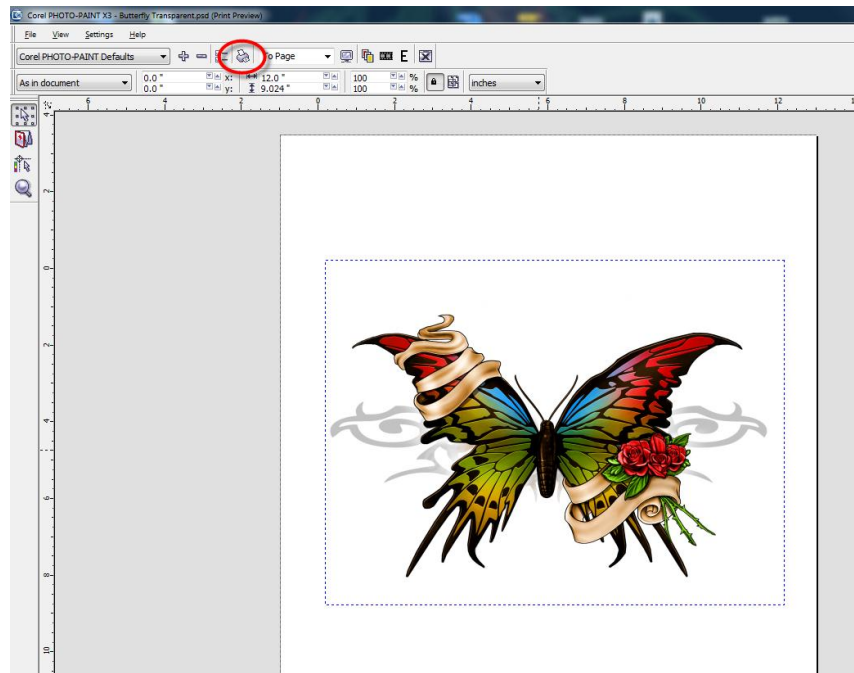
5. After you click properties the Brother Print Driver will appear. Adjust the settings the setting to what you are wanting i.e resolution, mask, highlight. Click OK when you are done.



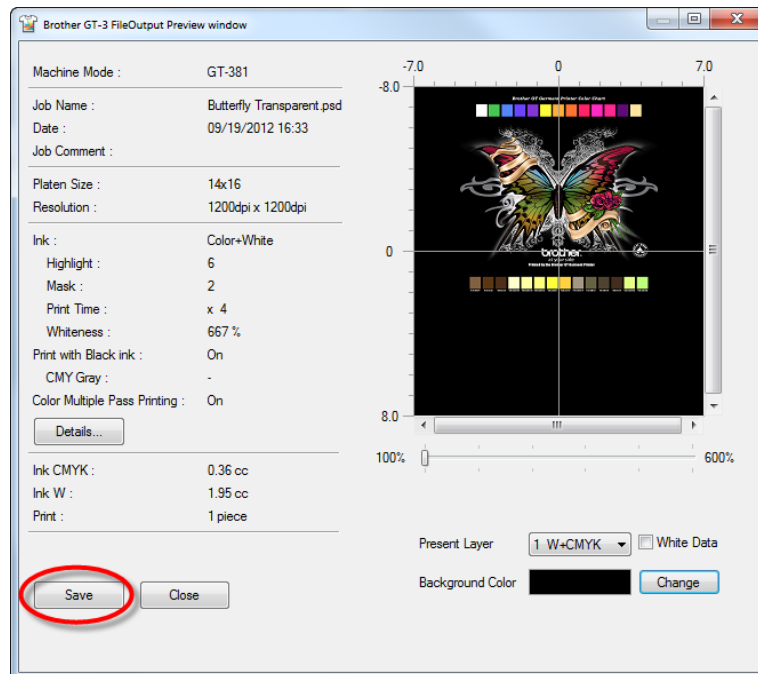
6. If you need to adjust where you want the graphic to print on your garment click on Print Preview.



7. The following window will appear. Click and move the image to where you want it or at the top type how many inches you want the image from the top and side. Click on the print icon when you are finished.



8. The complete AR3 will appear on screen. If you are happy with your setting click the Save button on the bottom left hand side.



9. Be sure to save your AR3's in the proper folders so you can access them at a later date. Now you have a locked file you can reprint the same shirt today or 2 months from now without having to remember your settings.

Your dealer(s)-distributor(s) are your first line of support, please contact them for prompt assistance. If you do not have a dealer(s)-distributor(s) refer to our website <http://www.brother-usa.com>. For additional information contact Technical Support at 1-877-427-6843 or tsupport@brother.com. Any information within this document is subject to change.
