

GT-541 Garment Printer

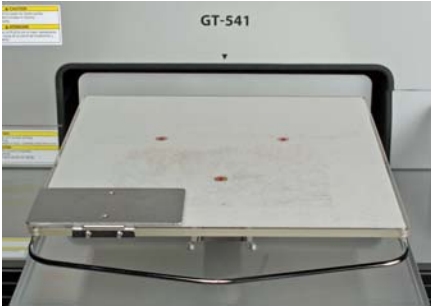
For Technical Assistance Please Call Toll Free 1-877-4BROTHER or Email: tsupport@brother.com

Pocket Attachment

***Caution – When using this platen adjust the height down according to the thickness of the material you are printing**

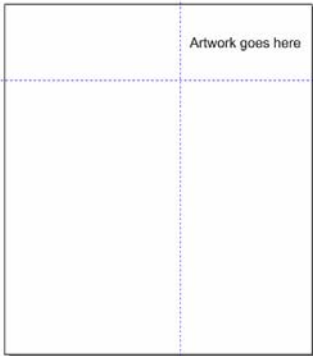
You can use this device with your Brother Adult, Youth or Baby Platen

(A)



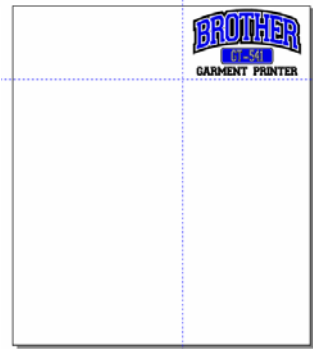
- 1) Clip the pocket attachment to the right or left top edge if your platen **(A)**
- 2) Use grid lines within your workspace to create a 6" wide by 3.5" high box **(B)** (This can be created in either the right or left top of your screen pending where your pocket is located)
- 3) Open or import your artwork into the software application you are using
- 4) Resize your artwork to fit the available workspace for this attachment which is 6" x 3.5" **(C)**

(B)



- 5) Select File Print (verify your GT-541 is showing in the printer box) **(D)**
- 6) Select the properties tab if you wish to change any settings **(E)**

(C)

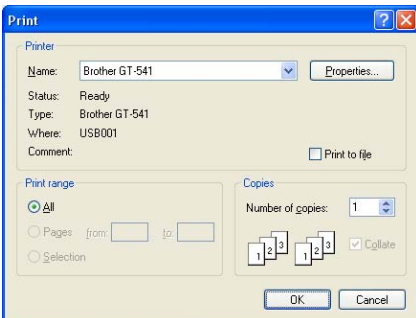


- 7) Once you send the file to the printer, load your garment (with the pocket) onto the platen. To load the garment, you will dress the platen as normal. Make sure the top of the pocket is centered and is sitting just below the attachment **(F)**
- 8) Smooth your garment out across the top of the attachment and the remain parts of the platen to ensure no damage **(G)**

- 9) Press the print button

Note: You can also use the attachment for golf shirts to print a design on the chest area to avoid the placket.

(D) and (E)



(F)



(G)

