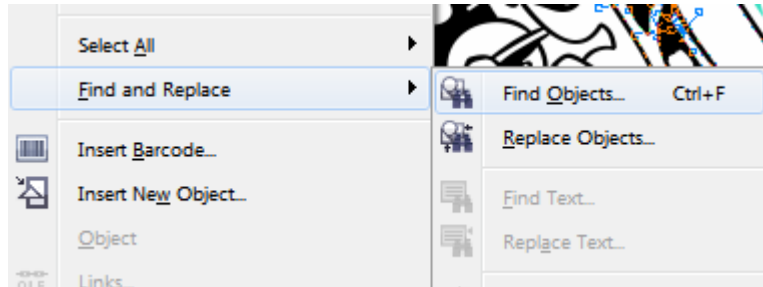
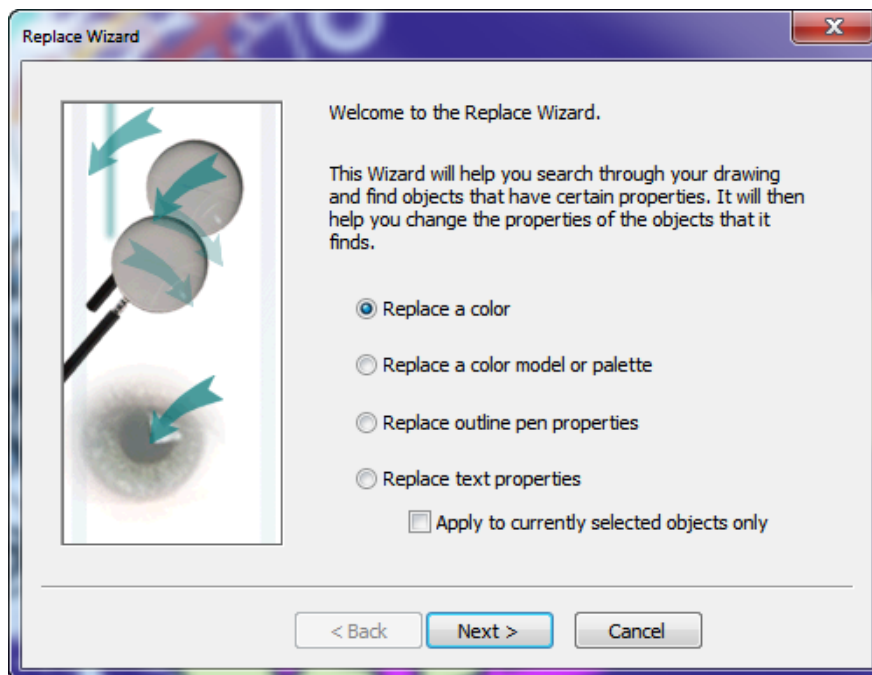


Replacing 255 with 254 (Corel x6)

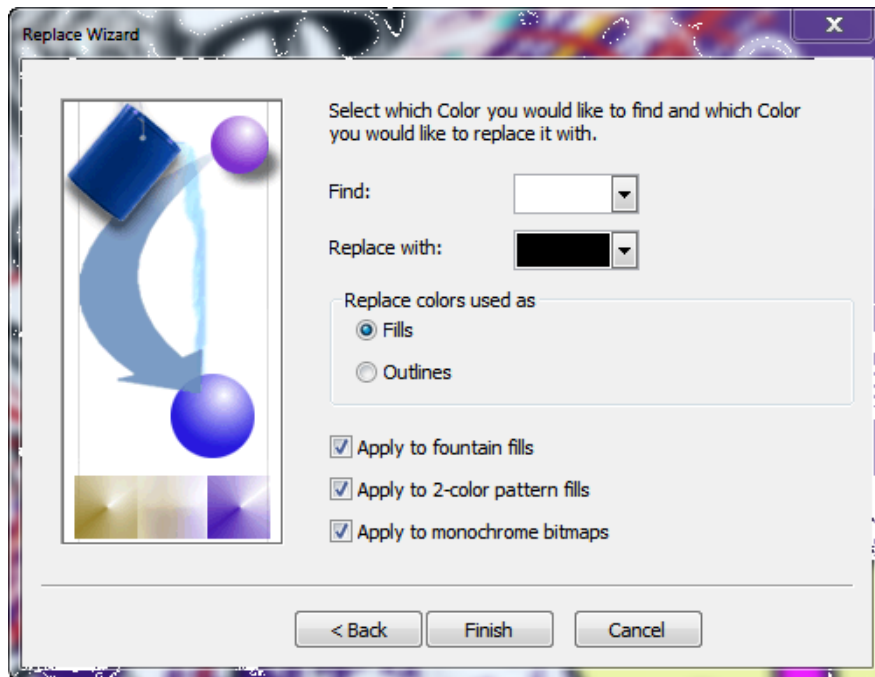
1. Go to Edit > Find and Replace > Replace Objects.



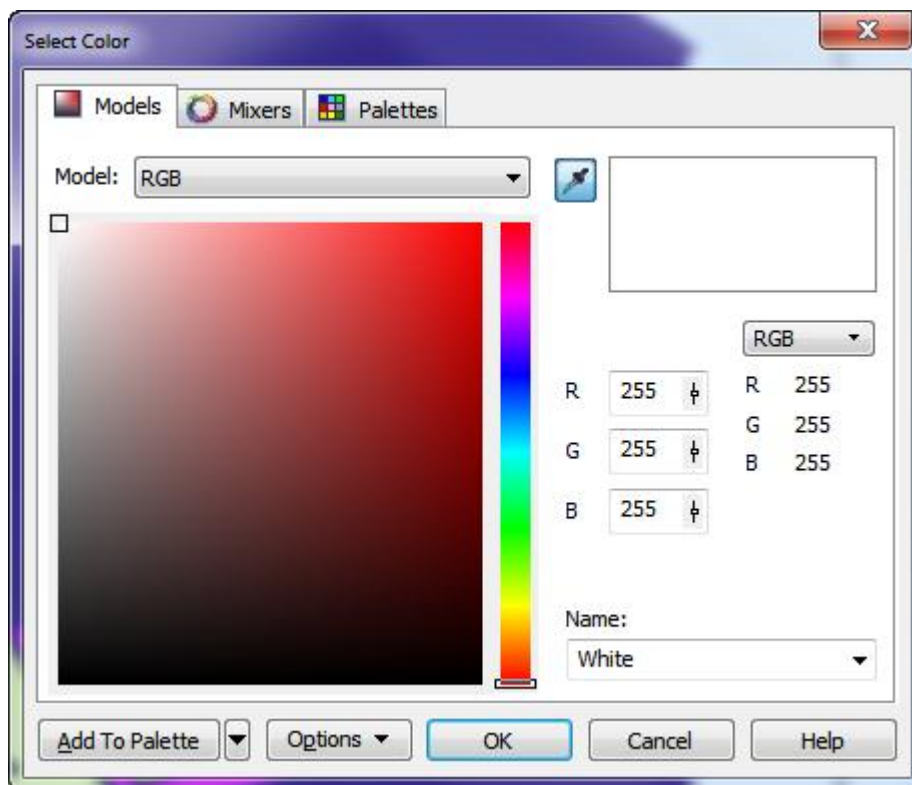
2. The following window will appear. Choose Replace a color and click Next.



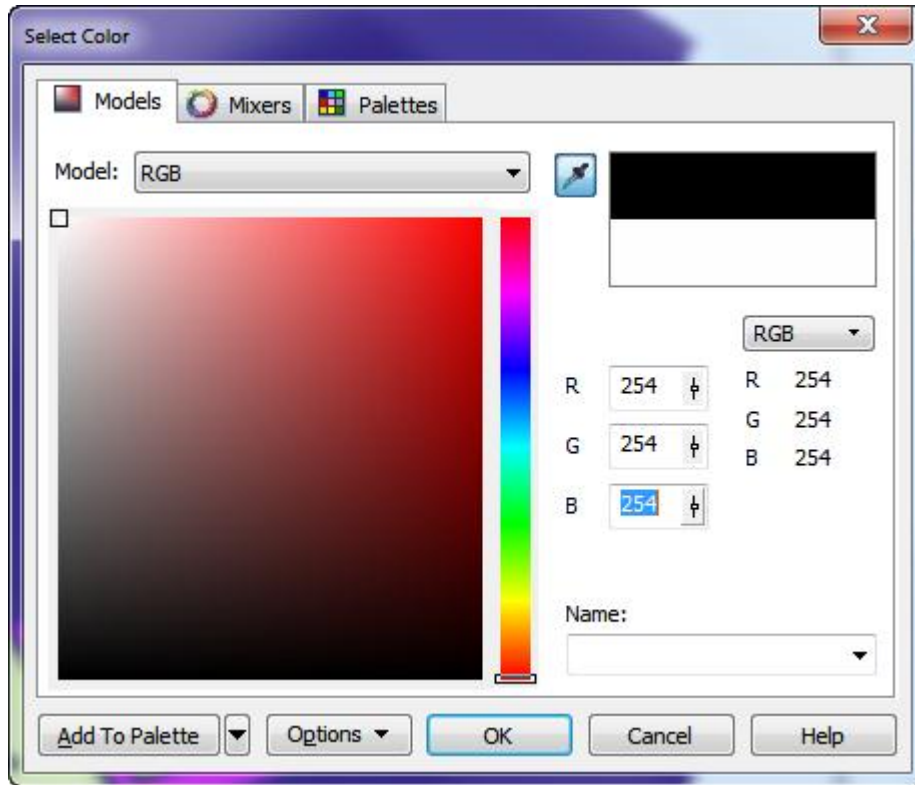
3. Click on box beside the work Find and choose More.



4. Type in the values 255, 255, 255 since this is the color value we want the Replace Wizard to find. Now press Ok.



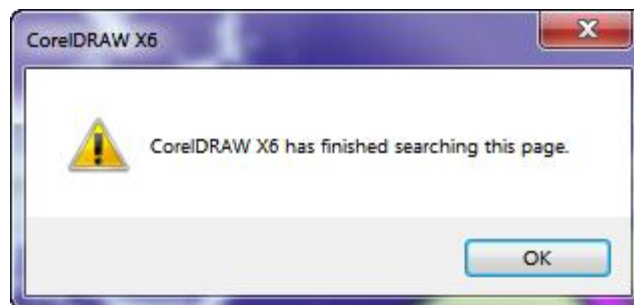
5. Now click on the Box beside the word replace and choose more. Type in the value 254, 254, 254 since this is the value we want to replace 255 with. Click Ok.



6. The following window will appear. You can either replace the 255 with 254 one by one or select Replace All.



7. Once all the 255 colors have been replaced the following window appears.



8. Now you should be able to print the white lettering or parts of your image to your printer.

Your dealer(s)-distributor(s) are your first line of support, please contact them for prompt assistance. If you do not have a dealer(s)-distributor(s) refer to our website <http://www.brother-usa.com>. For additional information contact Technical Support at 1-877-427-6843 or tsupport@brother.com. Any information within this document is subject to change.
