

GT-541 PRINTER

For Technical Assistance Please Call Toll Free **1-877-4BROTHER**

Email: tsupport@brother.com



Replacing Main Board Battery when panel reads “Error 1070 Battery Life.”

Select hyperlinks to open forms and ServTool.

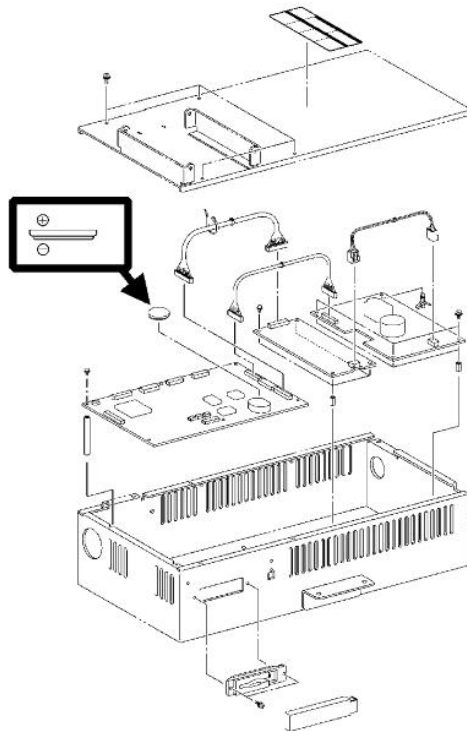
Step1. Front Right Panel Cover removal

[Panel Remove Info](#) – Click here to see!

- A. See or ask to be sent Cover removal instructions if needed...
- B. *Verify that machine is powered off and unplugged from power outlet!*

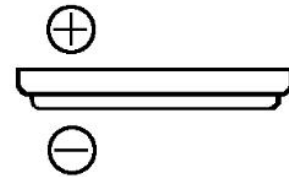
[Caution]

Danger of explosion may occur if battery is incorrectly replaced. Replace only with the same or equivalent type.



Install the battery in the right side with '+' and '-'.

Surely set it in the battery holder on the PCB.



Part name :	LITHIUM BATTERY
Part code :	SA5352001

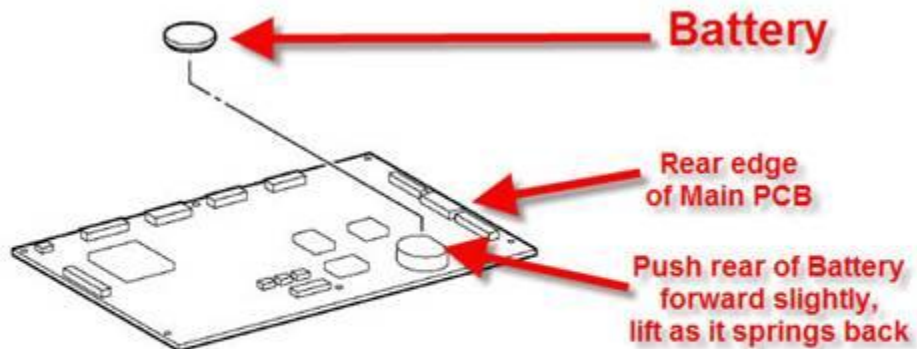
In case the battery is wrongly replaced, there is the danger that the battery could burst.
Replace the battery only with the same or equivalent of the original one.

NOTE:

Depending on manufacture date of board battery position may vary newer boards will have battery in vertical position as shown...



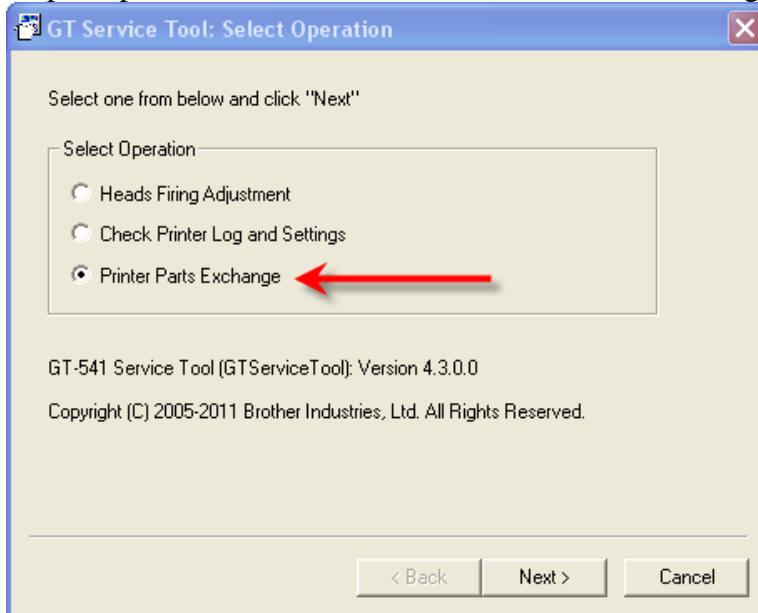
Battery is a remove and replaces part. Battery can be purchased at Radio Shack; type CR2032.



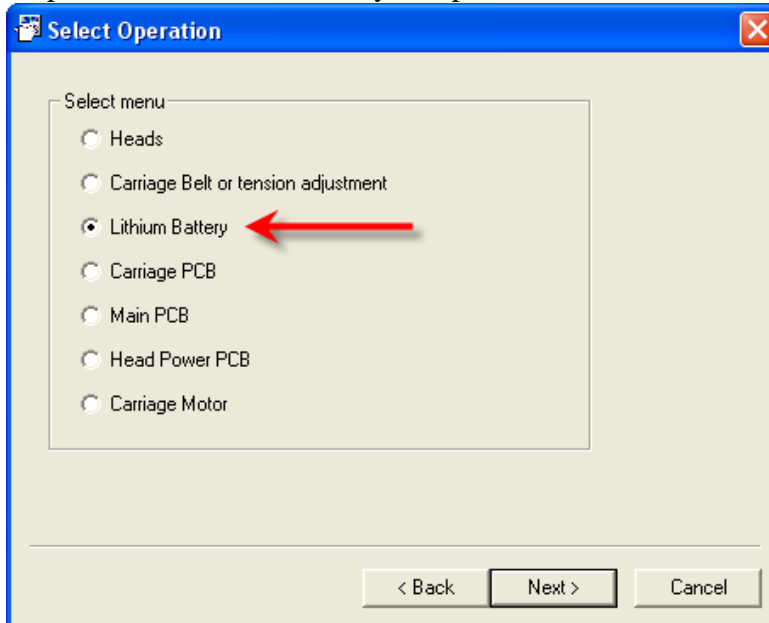
Q'ty	Part name
1	LITHIUM BATTERY: CR2032

- C. Once battery is replaced install control box cover and connect panel.
 - a. Do not put all covers on until following step is finalized.**
- D. Plug machine back into power outlet and power on machine
- E. Connect USB cable to machine and use Service Tool to finalize battery replace.

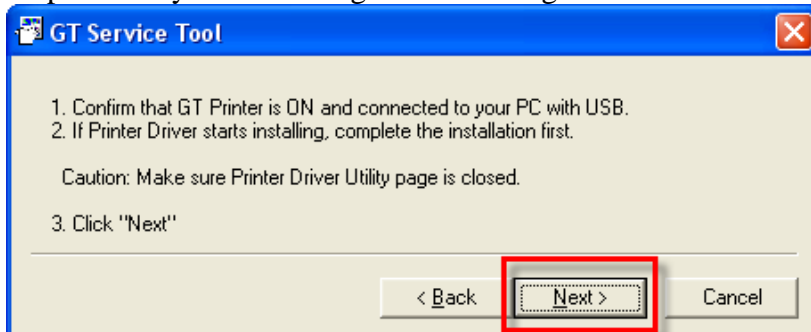
Step 1: open [Service Tool](#) and select Printer Parts Exchange and press next.



Step 2: select Lithium Battery and press Next

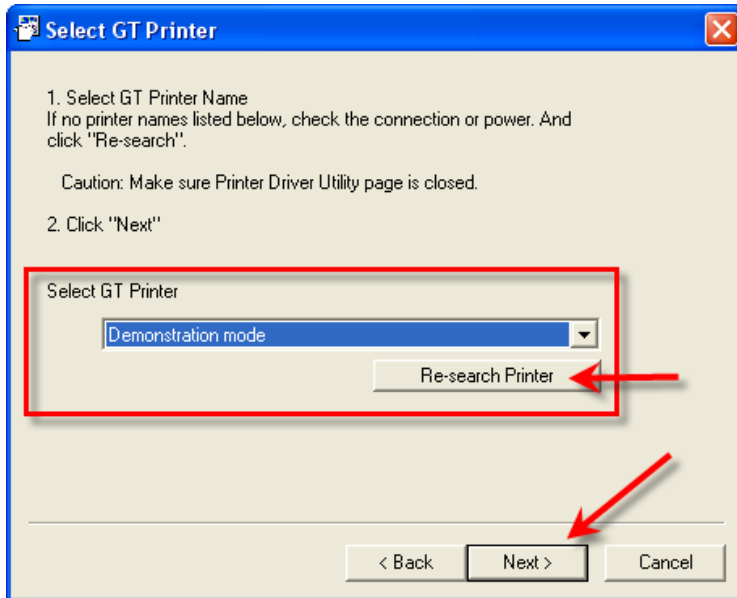


Step 3: Verify the following on next dialog box and then select next,

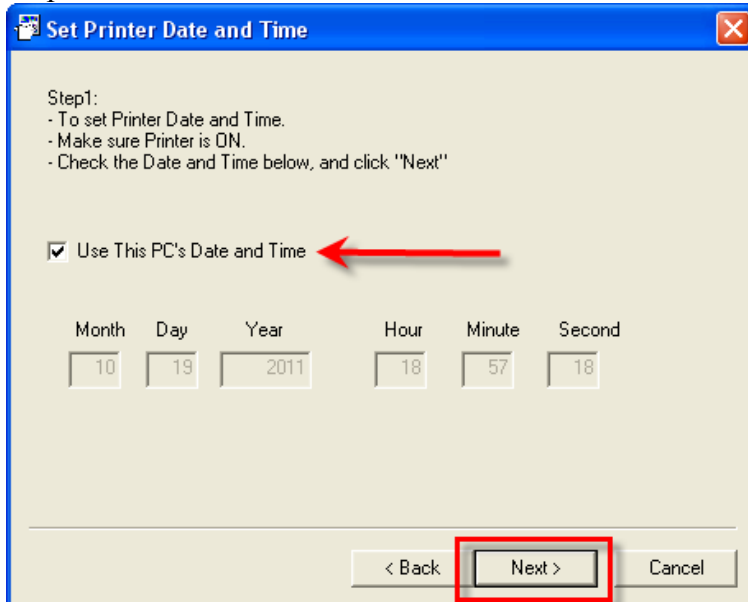


Step 4:

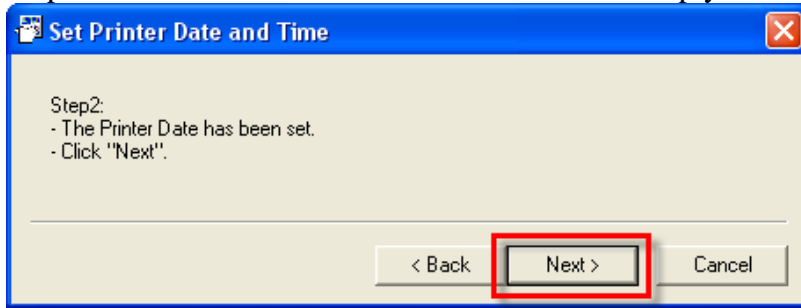
1. Select your printer from the drop down menu.
2. If your printer is not shown or found click on Re-search Printer
3. Once all is confirmed select next.



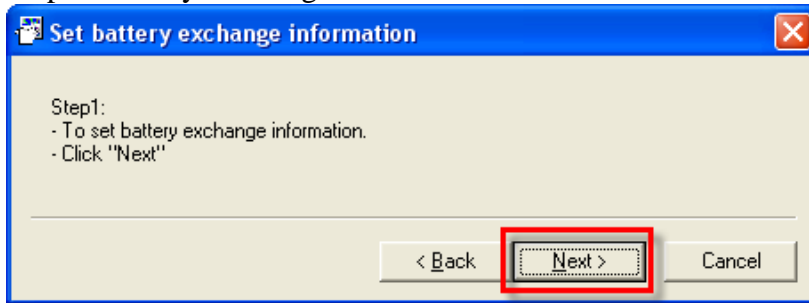
Step 5: Check box for Use this PC's Date and Time then select next.



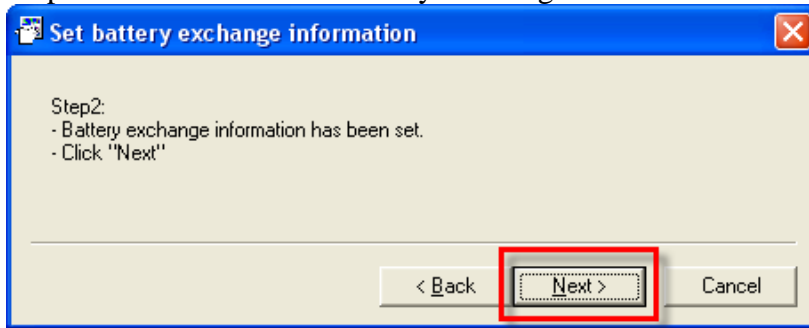
Step 6: Will state Time and Date has been set so simply select next.



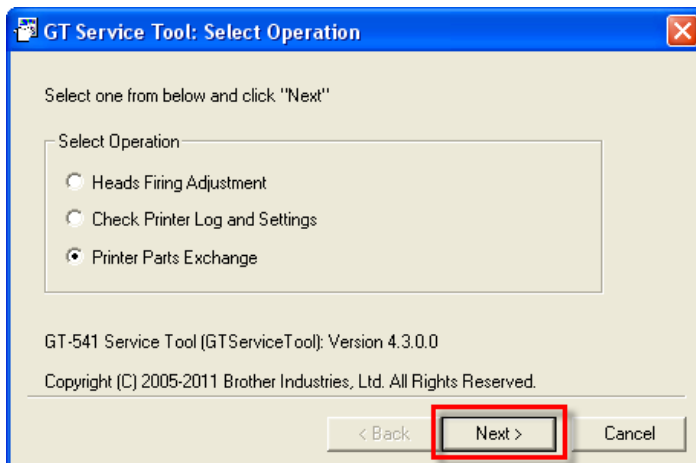
Step 7: Battery Exchange Information will be set and select next.



Step 7: Confirmation that Battery Exchange Information has been set select next.



Step 8: Shows main menu and confirms that Battery exchange has been complete, Press Cancel.



You are now ready to continue printing on your GT541 printer...