

# GT-541 Garment Printer

For Technical Assistance Please Call Toll Free 1-877-4BROTHER or Email: [tsupport@brother.com](mailto:tsupport@brother.com)

## SLEEVE PLATEN *made by EMS/Hoop Tech*

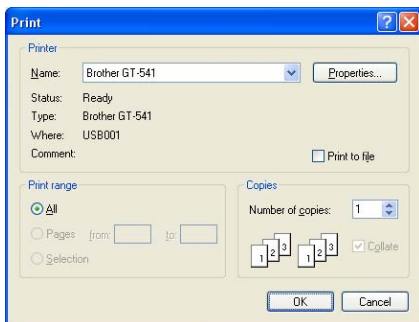
**\*Caution – When using this platen adjust the height down according to the thickness of the material you are printing**



(C) and (D)

- 1) Create a page layout width to 4.25" and the length to 16" **(A)**
- 2) Open or import your artwork into the software application you are using
- 3) Resize your artwork to fit the available workspace for this platen 4.25" x 16" **(B)**
- 4) Select File Print (verify your GT-541 is showing in the printer box) **(C)**
- 5) Select the properties tab if you wish to change any settings **(D)**
- 6) Once you send the file to the printer, load your long sleeve garment. To load the garment, slide the sleeve onto the platen **(E)**
- 7) Make sure to secure the band on the sleeve under the clip **(F)** at the end of the platen, this is to ensure your garment stays in place during printing
- 8) Smooth your garment out across the top of the platen and lay the remaining parts of the garment on the garment tray **(G)**
- 9) Press the print button

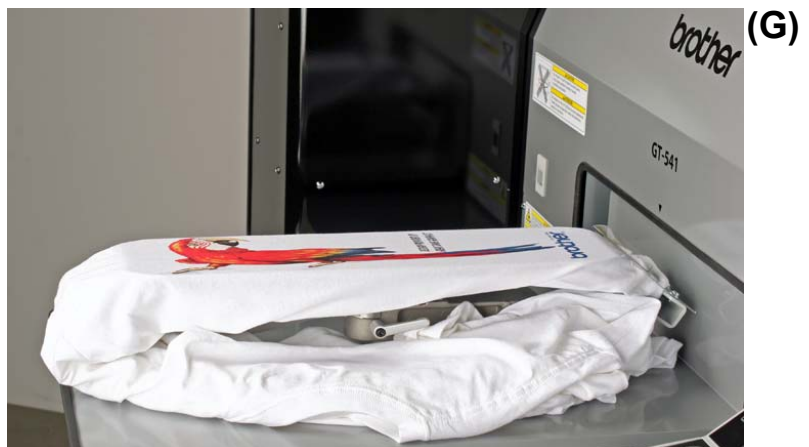
**\*For those customers using the file output driver make sure the display under the properties tab shows 14x16**



(E)



(F)



(G)