

Before you begin you must know your wireless network settings.

Write down the wireless network settings of your access point or wireless router.

Note:

If your operating system is Windows Vista® or Windows® 7, [click here](#) to confirm your network settings.

SSID (Service Set ID or Network name)

Passkey/Passphrase

Configure the wireless settings (typical Wireless Setup in infrastructure mode)

- 1 On your machine, press **Menu**. Press **▲** or **▼** to choose Network and press **OK**. Press **▲** or **▼** to choose Setup Wizard and press **OK**.
- 2 When Enable WLAN? is displayed, press **OK** to accept. This will start the wireless setup wizard. To cancel, press **Stop/Exit**.
- 3 The machine will search for available SSIDs. It will take several seconds to display a list of available SSIDs. If a list of SSIDs is displayed, press **▲** or **▼** to choose the SSID, then press **OK**.

If the wireless access point/router of the selected SSID supports WPS and the machine asks to use WPS, go to 4.
If the machine asks you to enter a Network Key, go to 5. Otherwise, go to 6.
- 4 Press **1** (Yes) to connect your machine using WPS. (If you choose **2** (No) to continue manual setting, go to f to enter a Network Key.) When the LCD shows Start PS, press the WPS button on your wireless access point/router, and then press **1** (Next) to proceed. Go to 6.
- 5 Enter the Network Key using the dial pad to choose each letter or number. The letters appear in this order: lower case, upper case and then numbers. To move the cursor left or right, press **◀** or **▶**.

Press **OK** when you have entered all the characters, then press **1** (Yes) to apply your settings.

6 Your machine will now try to connect to your wireless network. It may take a few minutes.

7 A connection result message appears for 60 seconds on the LCD and a wireless LAN report will automatically be printed.
If the connection failed, check the error code on the printed report and refer to *Troubleshooting* on page 27.

Wireless setup is now complete. A four level indicator at the upper right of your machine's LCD will show the wireless signal strength of your access point/router.

Install the drivers & software

Make sure that your computer is ON and you are logged on with Administrator rights.

Important

- If there are any programs running, close them.
- The screens may differ depending on your operating system.

Note

Before installation, if you are using personal firewall software, disable it. After the installation, restart your personal firewall software.

1 Put the supplied CD-ROM into your CD-ROM drive. If the model name screen appears, choose your machine. If the language screen appears, choose your language.

Note

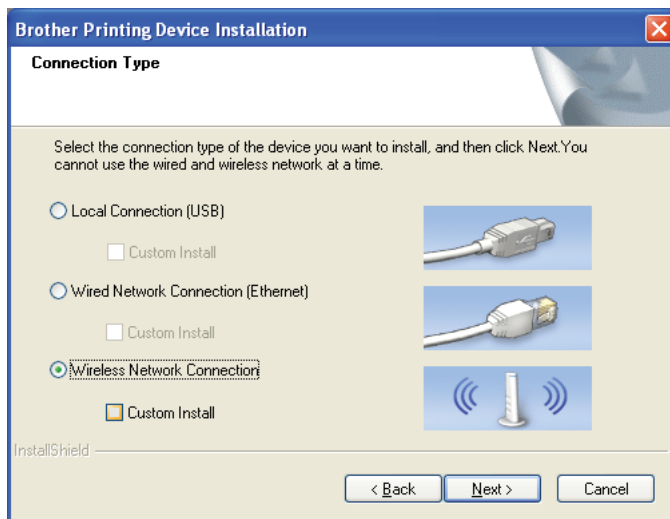
If the Brother screen does not appear automatically, go to My Computer (Computer), double-click the CD-ROM icon, and then double-click start.exe.

2 The CD-ROM Top Menu will appear. Click **Install MFL-Pro Suite** and click **Yes** if you accept the license agreements. Follow the on-screen instructions.

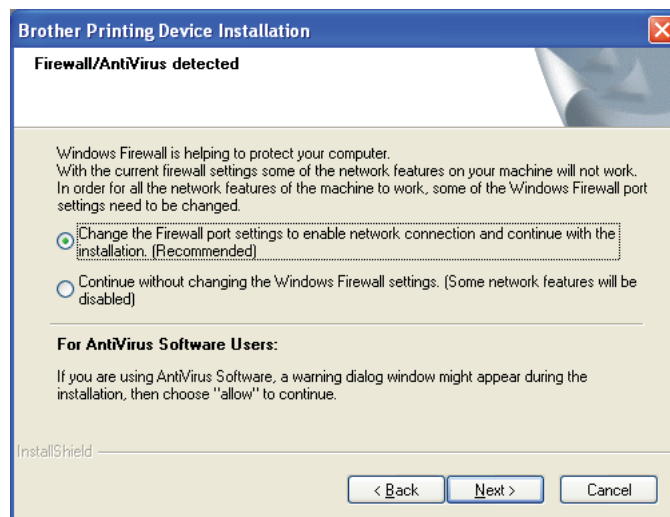


Note
For Windows Vista® and Windows® 7, when the User Account Control screen appears, click Allow or Yes.

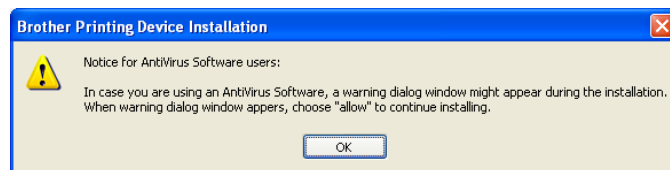
3 Choose **Wireless Network Connection**, and then click **Next**.



4 When this screen appears, choose **Change the Firewall port settings to enable network connection and continue with the installation. (Recommended)** and click **Next**.



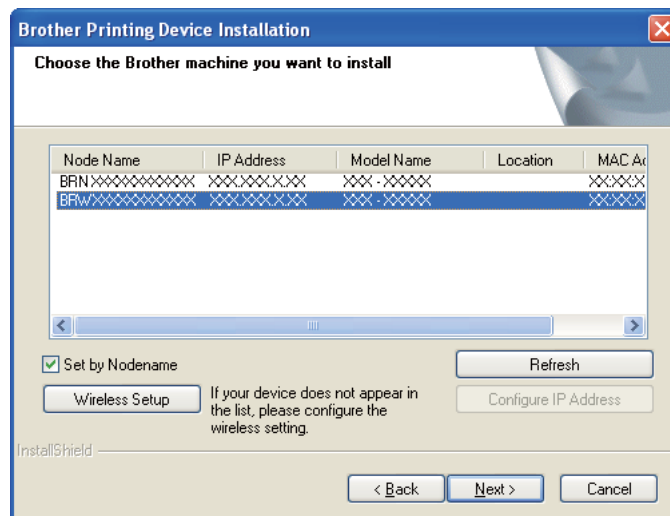
If you are using a firewall other than Windows Firewall or Windows Firewall is off, this screen may appear.



See the instructions provided with your firewall software for information on how to add the following network ports.

- For network scanning, add UDP port 54925.
- For network PC-Fax receiving, add UDP port 54926.
- If you still have trouble with your network connection, add UDP port 137 and 161.

5 Choose your machine from the list, and then click **Next**.



Note

- If you are using WEP and the LCD displayed Connected but your machine is not found, make sure you entered the WEP key correctly. The WEP key is case sensitive.

6 The installation of the Brother drivers will automatically start. The installation screens appear one after another.

IMPORTANT

DO NOT cancel any of the screens during the installation. It may take a few seconds for all screens to appear.

Note

For Windows Vista and Windows 7, when the **Windows Security** screen appears, click the check box and click **Install** to complete the installation correctly.

7 When the **On-Line Registration** screen is displayed, make your selection and follow the on-screen instructions.

8 If you do not want to set your machine as the Default printer, uncheck **Set as Default Printer**.

9 Click **Finish** to restart your computer. After restarting the computer, you must be logged on with Administrator rights.



Note

- If an error message appears during the software installation, run the Installation Diagnostics located in Start/All Programs/ Brother/MFC-JXXX (where MFC-JXXX is your model name).
- Depending on your security settings, a Windows Security or antivirus software window may appear

when using the machine or its software. Please allow or permit the window to continue.

10 The following screens will appear.

- When the **Check for Firmware Updates** screen appears, choose the firmware update setting you want and click **OK**.
- When the **Brother Product Research & Support Program** starts up, follow the on-screen instructions.

Note

- Internet access is required for the firmware update and the Brother Product Research & Support Program.